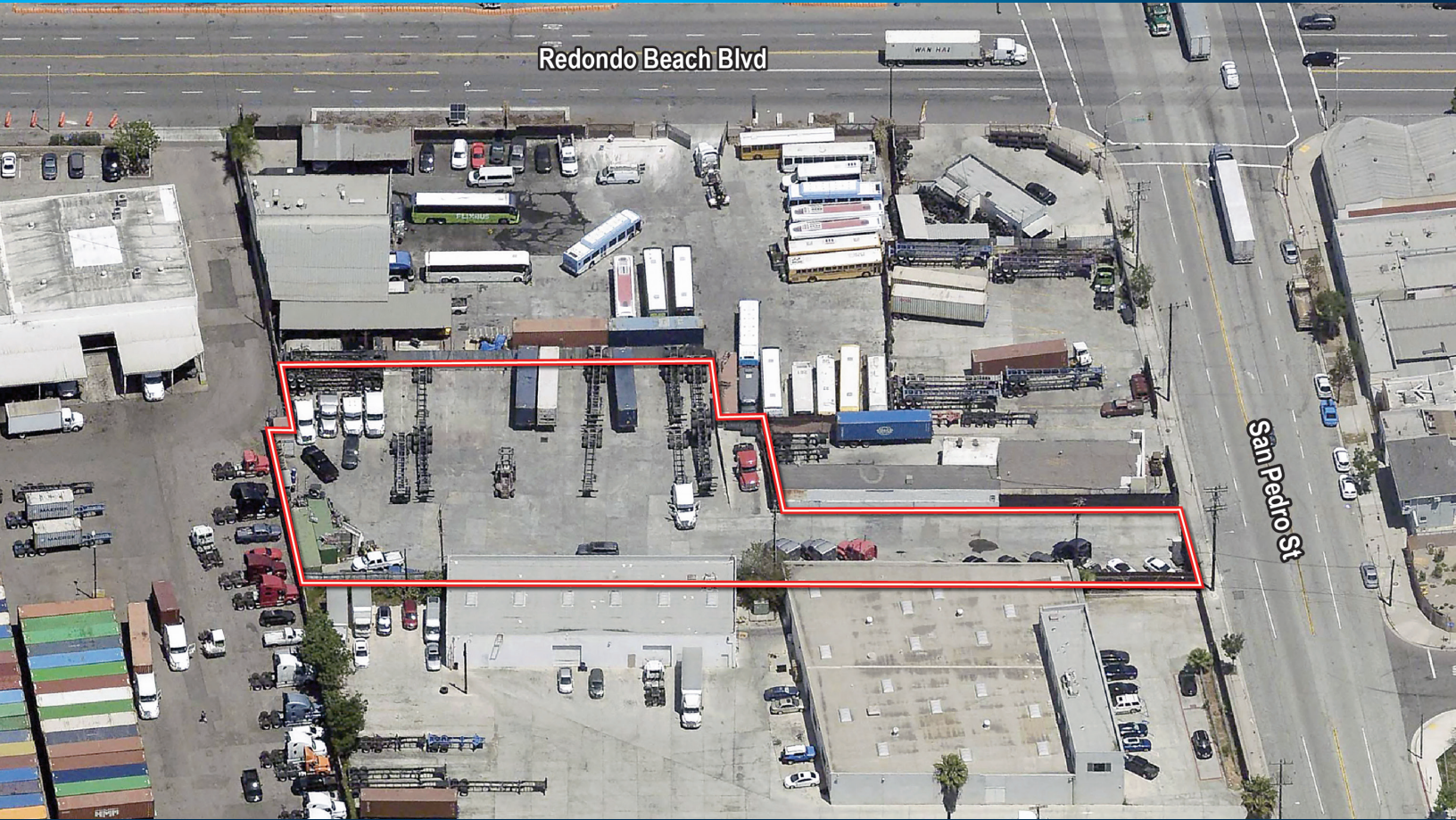


# FOR LEASE

# 36,996 SF INDUSTRIAL LAND

15327 S. SAN PEDRO STREET, GARDENA, CA 90248



## PROPERTY FEATURES

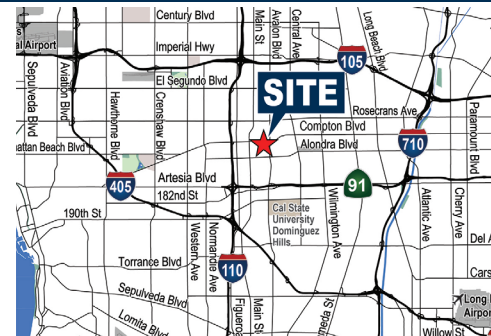
- Land Area: 36,996 SF
- Building Area: 0 SF
- Paved: Yes
- Yard Lighting: Yes
- Fenced: Yes
- Zoning: LCM2-B1

## PROPERTY HIGHLIGHTS

- Unincorporated LA County
- Concrete Yard
- Fenced
- Easy Freeway Access to the 110, 405 and 91 Freeways
- Exterior Dock High Loading with Ramp in the Yard

### ASKING RATE:

- \$21,000 (\$0.57 PSF) per month, gross



EXCLUSIVELY OFFERED BY:

## **Voit**

REAL ESTATE SERVICES

**BRIAN MCLOUGHLIN**  
Executive Vice President, Partner  
**(323) 633-1074**  
bmcloughlin@voitco.com  
License #01268410

**DAVID FULTS**  
Executive Vice President, Partner  
**(323) 791-0038**  
dfults@voitco.com  
License #01242123

1025 W. 190th Street, #350 Los Angeles, California 90248 | License #01991785

The information contained herein has been obtained from sources we deem reliable. While we have no reason to doubt its accuracy, we do not guarantee it. Licensed as Real Estate Salespersons by the DRE. ©2026 Voit Real Estate Services, Inc. All Rights Reserved. License #01991785.