

Office | For Lease

CBRE

SanAir Technologies

10501 Trade Court
Richmond, Virginia 23236

2,300 RSF - 7,800 RSF, Up To 13,500 RSF Available Now



SanAir Technologies

10501 Trade Court | Richmond, Virginia 23236

Property Highlights



2,287 RSF - 7,833 RSF, up to 13,505 RSF



Shared monument signage



\$19.25/SF, full-service lease



Conveniently located 3 miles from Route 76



Second floor office space



GRTC Public Transit in close proximity



Elevator access

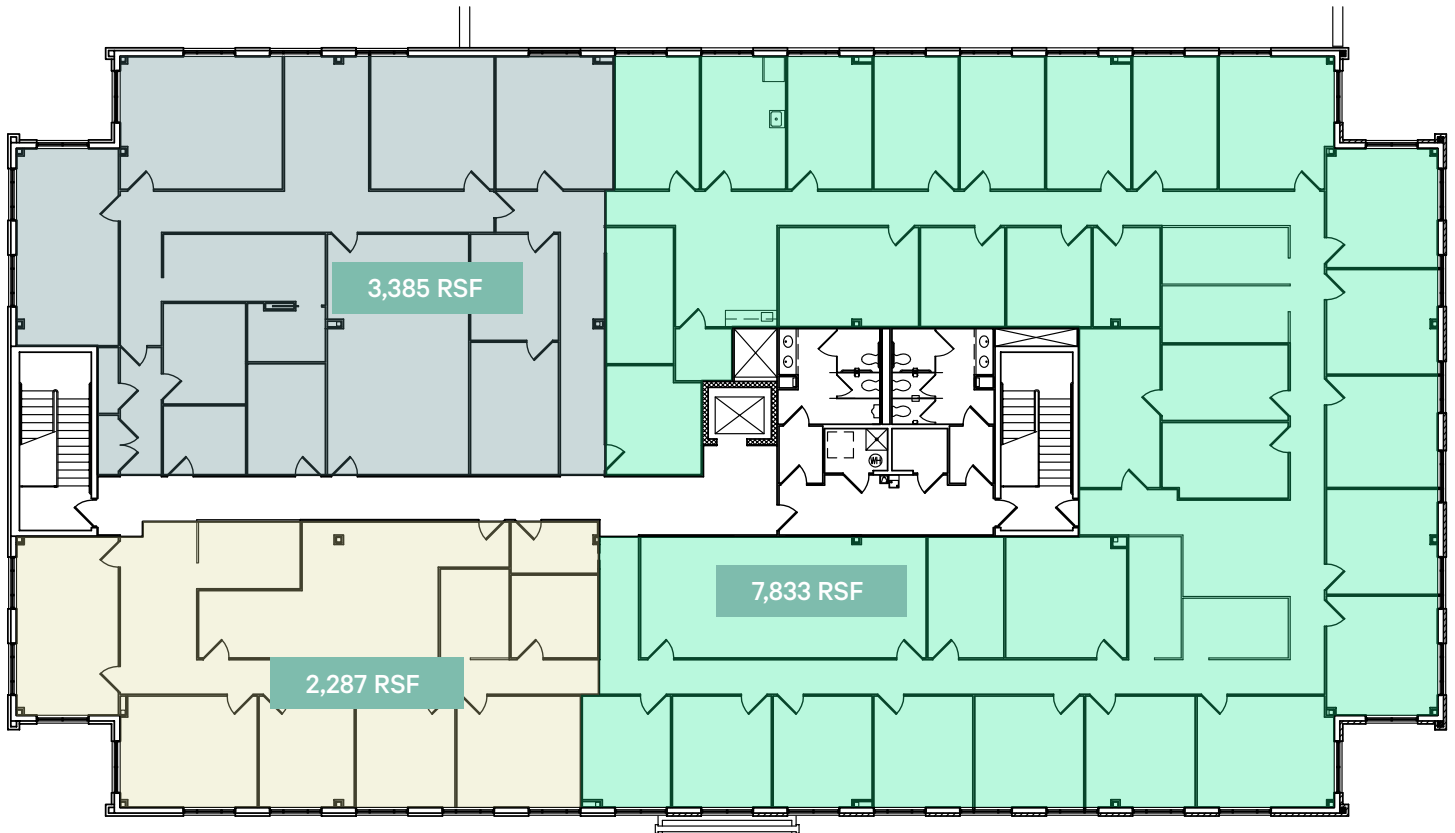


Numerous retail amenities nearby





2nd Floor Office Space
Up to 13,505 SF Available





Local Demographics	1 Mile	3 Miles	5 Miles
Population	5,539	64,027	153,775
Average Household Income	\$83,876	\$105,983	\$104,312
Households	2,067	25,285	61,223

Contact Us

Matt Hamilton

Senior Vice President

+1 804 401 4005

matt.hamilton@cbre.com

Eric Williford

Vice President

+1 804 401 4003

eric.williford@cbre.com

© 2023 CBRE, Inc. All rights reserved. This information has been obtained from sources believed reliable, but has not been verified for accuracy or completeness. You should conduct a careful, independent investigation of the property and verify all information. Any reliance on this information is solely at your own risk. CBRE and the CBRE logo are service marks of CBRE, Inc. All other marks displayed on this document are the property of their respective owners, and the use of such logos does not imply any affiliation with or endorsement of CBRE. Photos herein are the property of their respective owners. Use of these images without the express written consent of the owner is prohibited.