

Riverbank Landing

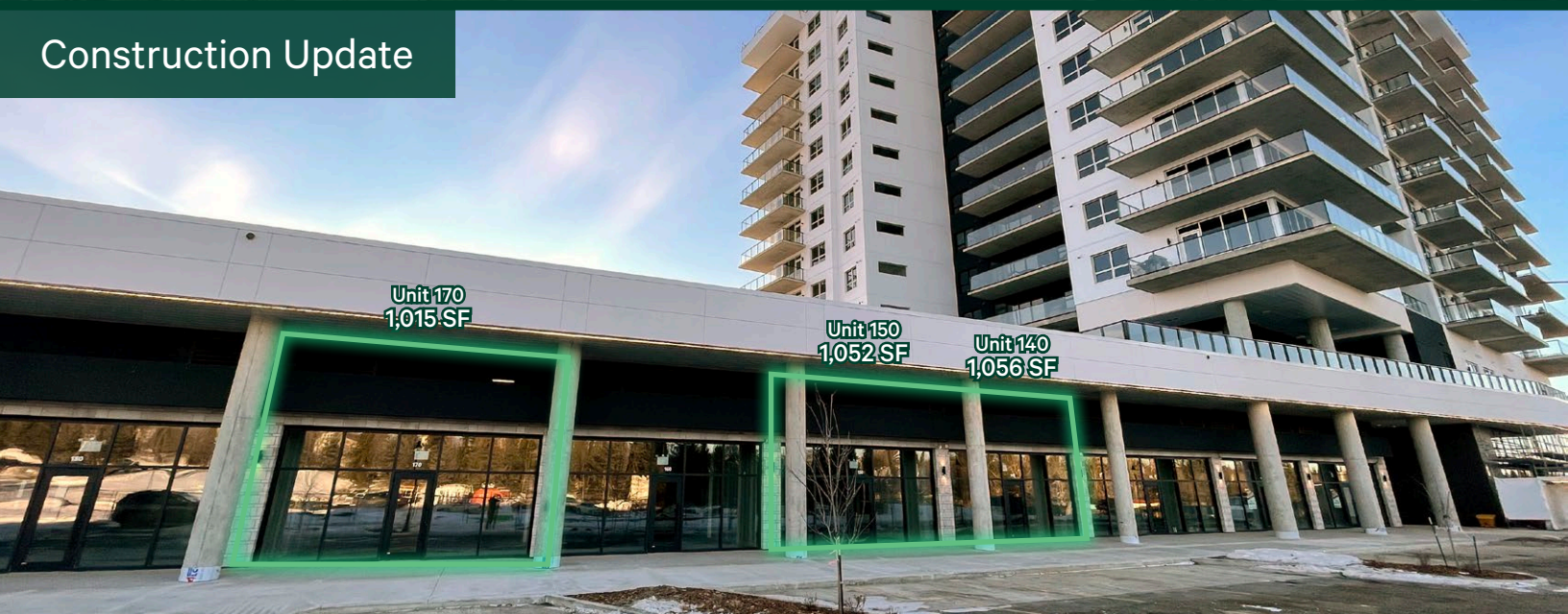
Shadow Grocery Anchored Site

260 Riverbank Landing
St. Albert, Alberta
www.cbre.ca

Mixed Use Development



Construction Update



Riverbank Landing

Mixed Use Development

We are pleased to offer a unique retail lease opportunity in a highly sought-after location, shadow anchored by the popular Italian Bakery's Mercato. This property boasts a mix of unit sizes, ranging from 1,015 SF to 2,108 SF, providing flexibility for a variety of businesses.

Located in a vibrant area, this property pairs perfectly with the adjacent residential units, creating a live, work, play opportunity for the future. With a strong demand for local amenities and services, this location is poised for success- an ideal spot for businesses looking to capitalize on the growing demand for convenience and community.



Riverbank Landing

260 Riverbank Landing | St. Albert, Alberta

For Lease

Property Details

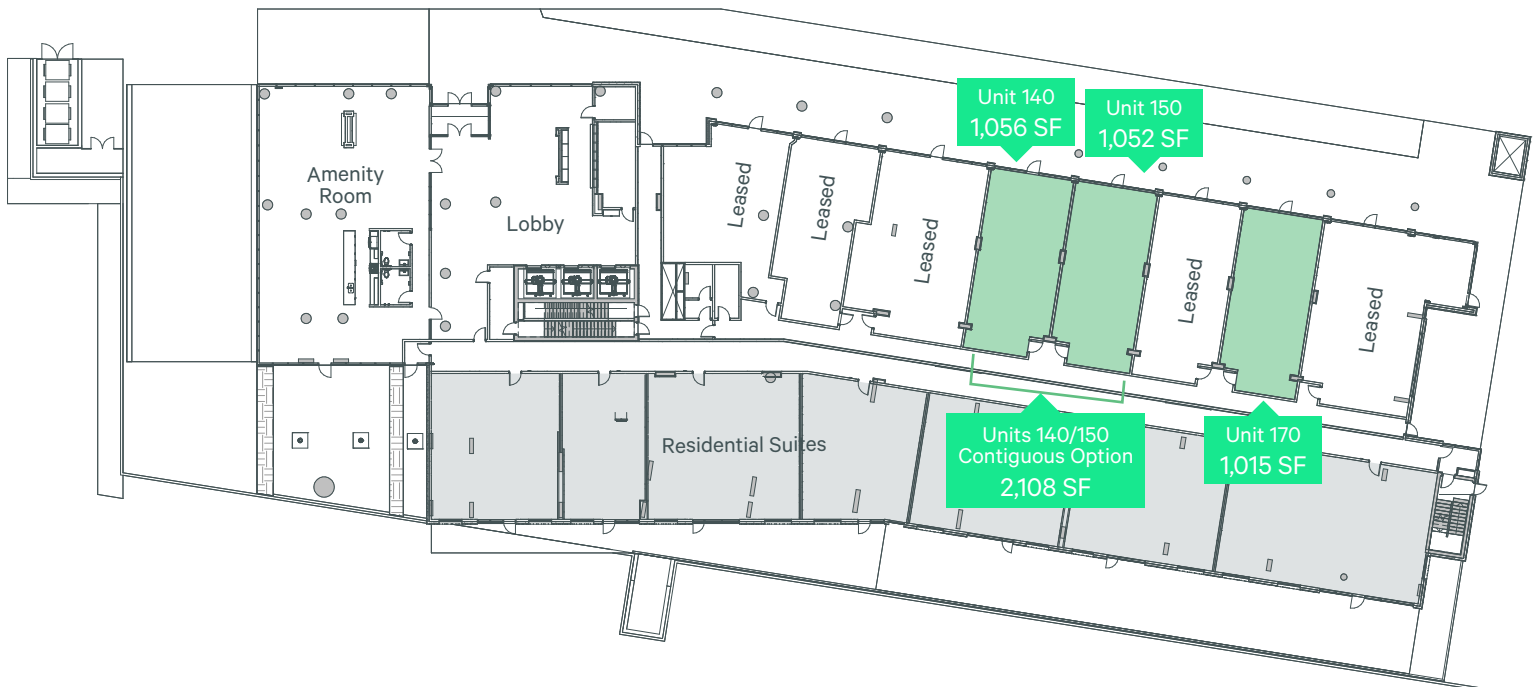
Municipal Address	260 Riverbank Landing , St. Albert, AB
Legal Address	Plan 2320303; Block 1; Lot 9
Zoning	DCMU - Direct Control Mixed Use
Ceiling Height	20'
Parking	Scramble & Underground
Op Costs	TBC
Lease Rate	Market
Available	Estimated for 2026

Available Units

Unit 140	1,056 SF
Unit 150	1,052 SF
Units 140/150	2,108 SF Contiguous Option
Unit 170	1,015 SF

Permitted Uses

- Bakeries
- Coffee Shops
- Restaurants
- Breweries
- Wine Bars
- Specialty Grocers
- Food Sales
- Clothing Retailers
- Book Stores
- Décor Shops
- Flower Shops
- Art Galleries
- Hair Services
- Spa Services
- Acupuncture
- Physical Therapy
- Massage Therapy
- Personal Services
- Fitness Studios
- Registry Services
- Children's Classes & Activities
- Family Engagement Support



Total Estimated
Population at Buildout:
66,293



Area Demographics

	1 KM	3KM	5KM
Estimated Population (2024)	5,837	49,465	79,221
Projected Population (2029)	6,490	56,002	89,106
Projected Population Change (2024-2029)	11.2%	13.2%	12.5%
Average Household Income	\$201,387	\$164,490	\$166,114

Contact Us

Matt Hanson *Lead*
Sales Representative
+1 780 917 4637
matthew.hanson@cbre.com

Ryan O'Shaughnessy *Lead*
Senior Associate
+1 780 229 4686
ryan.oshaughnessy@cbre.com

This disclaimer shall apply to CBRE Limited, and to all divisions of the Corporation ("CBRE"). The information set out herein (the "Information") has not been verified by CBRE, and CBRE does not represent, warrant or guarantee the accuracy, correctness and completeness of the Information. CBRE does not accept or assume any responsibility or liability, direct or consequential, for the Information or the recipient's reliance upon the Information. The recipient of the Information should take such steps as the recipient may deem necessary to verify the Information prior to placing any reliance upon the Information. The Information may change and any property described in the Information may be withdrawn from the market at any time without notice or obligation to the recipient from CBRE.