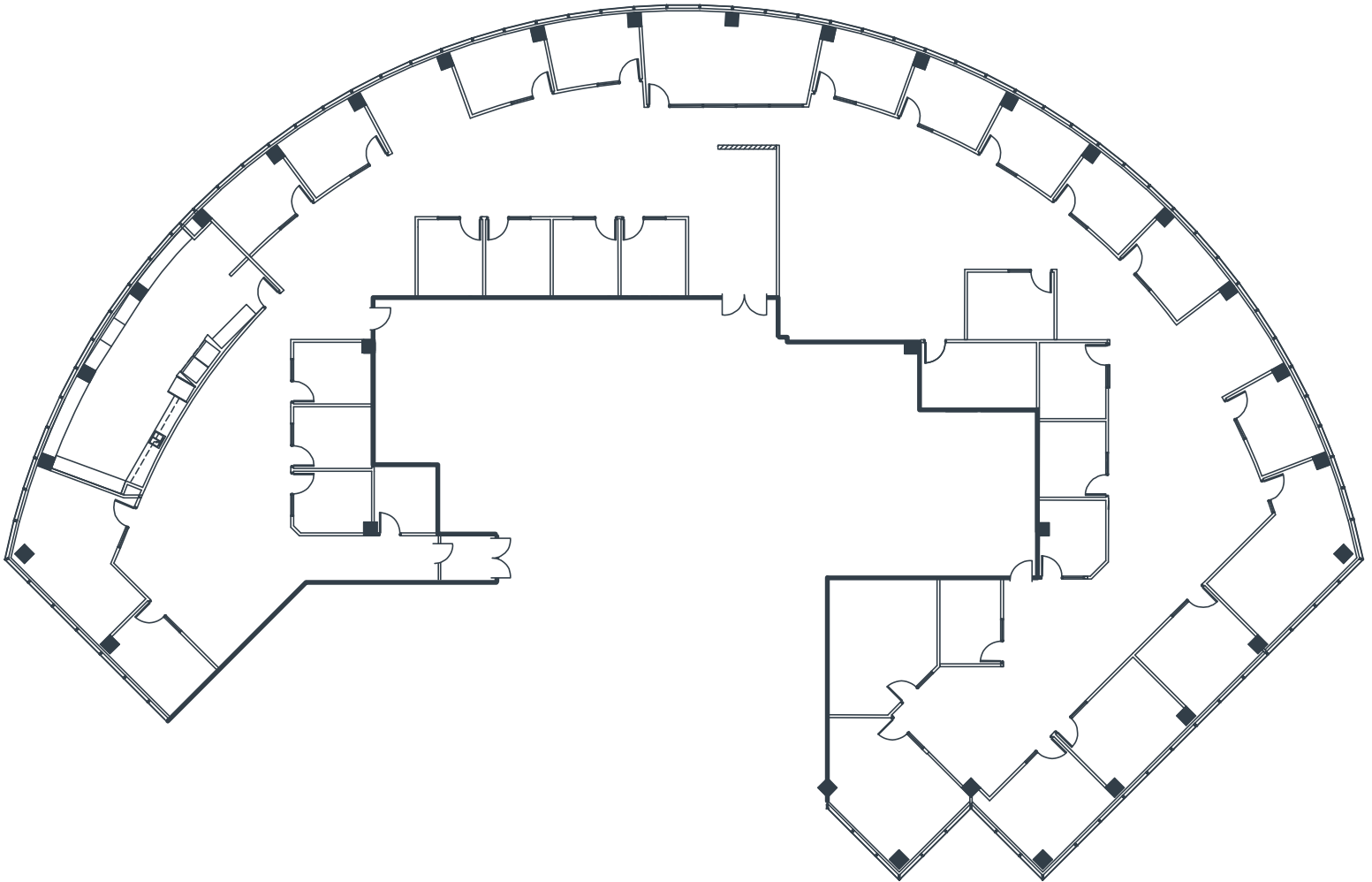


# CENTURY CENTRE

2601 Main Street, Suite 450  
Irvine, CA

14,525 Square Feet

Call for Pricing  
Full Service Gross



## NOTES

- Reception
- 17 Window Offices
- 14 Interior Offices
- Conference Room
- Kitchen
- Large Open Work Area
- Part of a Professionally Managed Business Park

Created by Olen Commercial Realty Corp., 2022.  
Information is not to be published or copied without  
written approval. Square footage and floor plans are  
estimates and should be separately verified. All rates,  
terms, floor plans, and building facts are subject to  
change without notice.

ea 07.08.2025

## MARIA MEYER

Senior Leasing Director  
949.719.7215  
mmeyer@olen.com



Seven Corporate Plaza  
Newport Beach, CA  
949.644.6536  
www.olen.com