

TWIN PEAKS PLAZA NORTH

14969 POMERADO ROAD, POWAY, CA 92064



INTRODUCTORY RATE
BROKER BONUS
INQUIRE FOR DETAILS





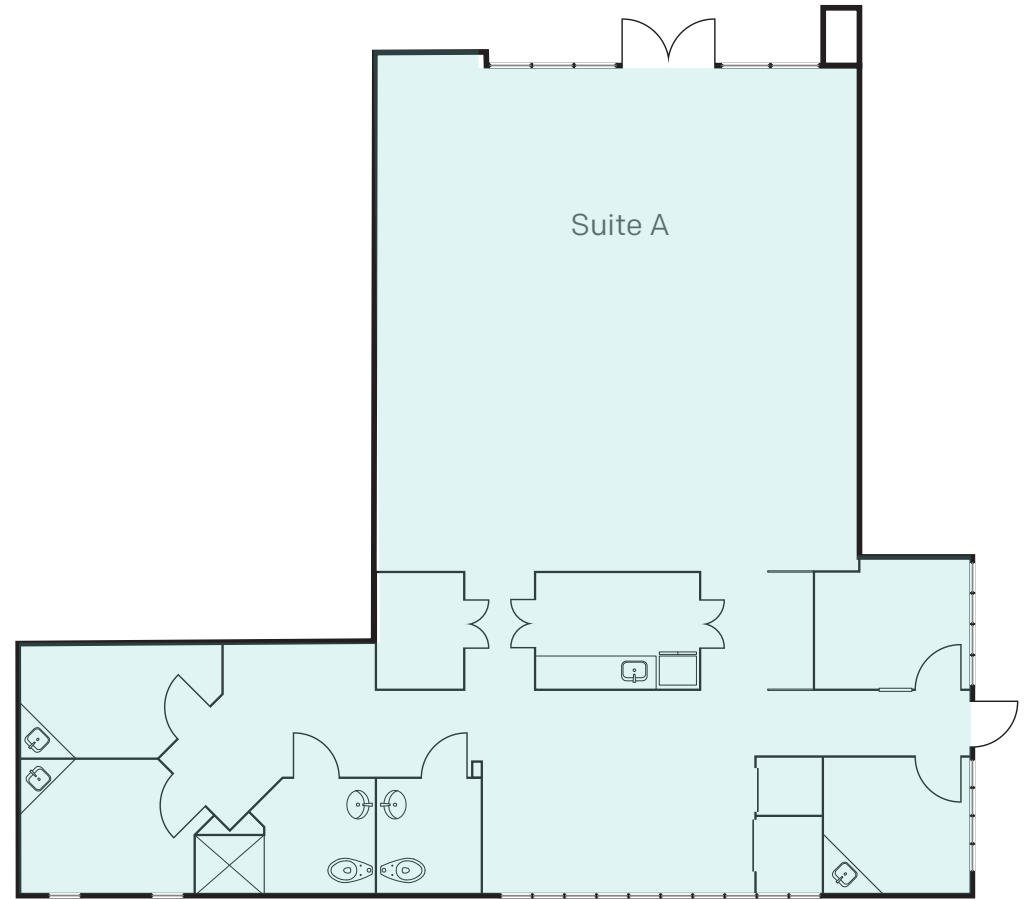
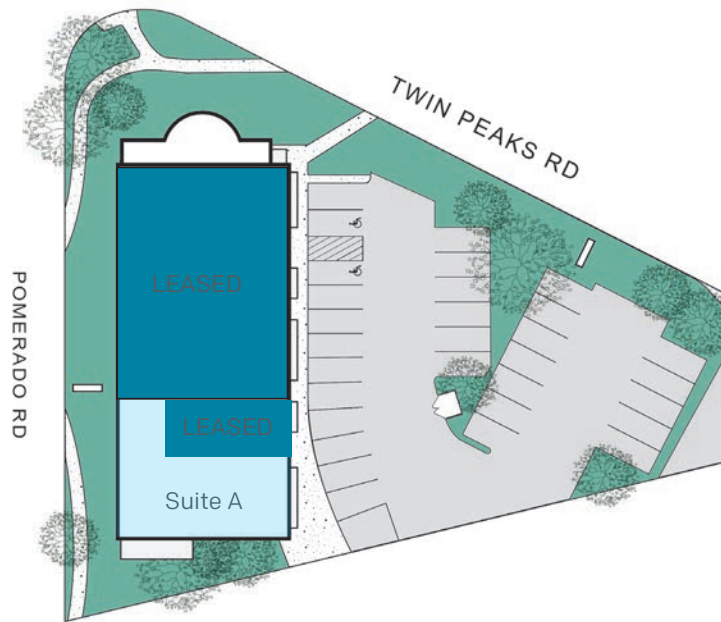
THE OVERVIEW

CB Properties and Voit Real Estate Services are pleased to present for lease, [14969 Pomerado Road](#), located at the intersection of Pomerado Road and Twin Peaks Road in Poway, California. The Property will benefit tenants looking for a highly trafficked intersection and busy retail shopping center.

- Fully Improved
- Access to Amenities
- Extensively landscaped surface parking area
- Convenient business location
- Medical, office, and retail uses allowed under the existing zoning
- It is the "point space" on the south end of the building in addition to having extensive glass
- Four sign positions available, including building and Pomerado Road visible signage.
- Perfect space for salon, spa, dental and medical, Vet or clinic use

SUITE A

SQ FT	±2,171 SF
LEASE RATE	WITHHELD (Est. NNNs: ±1.00 PSF/Month)



TWIN PEAKS PLAZA NORTH

14969 POMERADO ROAD, POWAY, CA 92064



Voit
REAL ESTATE SERVICES

MULVANEY SIOR
COMMERCIAL
ALLIANCE 

JOSH WEST, SIOR
Senior Vice President, Partner | Lic #01923375
858.458.3358 | jwest@voitco.com

BRIAN MULVANEY, SIOR, CCIM
Senior Vice President, Partner | Lic #00938944
858.458.3372 | bmulvaney@voitco.com

CB
Properties

TOM MOORE
Sr Vice President, Principal | Lic #1314100
858-967-3553 cbrealtyadvisors@gmail.com

4180 La Jolla Village Drive, Suite 100 • La Jolla, California 92037 | 858.453.0505 | 858.408.3976 Fax | Lic #01991785 | www.voitco.com

Licensed as a Real Estate Salespersons by the CA Bur of Real Estate. ©2026 Voit Real Estate Services, Inc. The information contained herein has been obtained from sources we deem reliable. While we have no reason to doubt its accuracy, we do not guarantee it.