

Compton

Whitechapel

The Loom
14 Gowers Walk
E1 8PY

Newly refurbished former Victorian Wool Warehouse for rent located a short walk from Aldgate and Aldgate East Stations

For Rent

1,407 to 17,527 ft²

020 7101 2020
compton.london



Compton

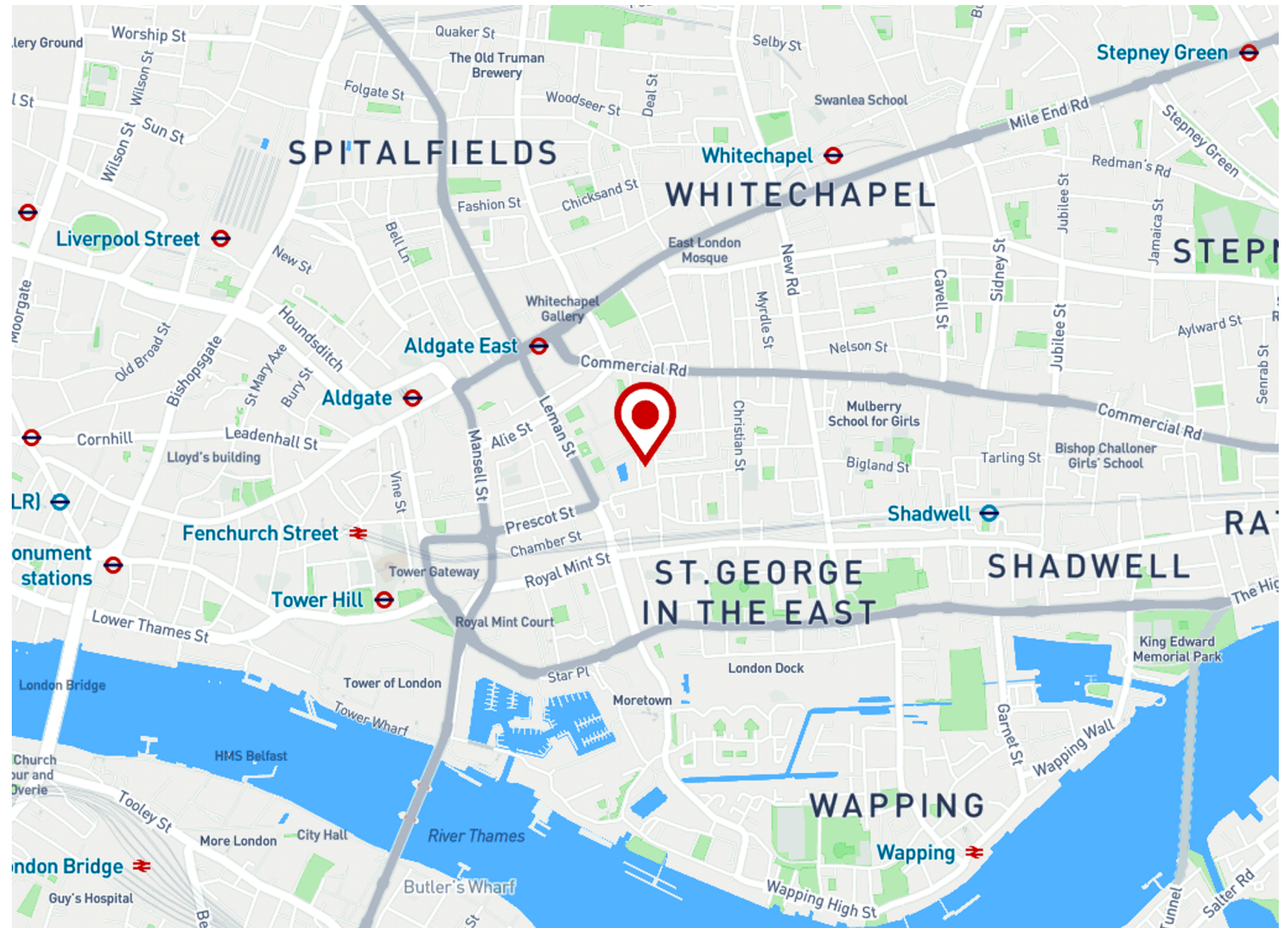
Whitechapel

The Loom
14 Gowers Walk
E1 8PY

Newly refurbished former Victorian Wool Warehouse for rent located a short walk from Aldgate and Aldgate East Stations

For Rent

1,407 to 17,527 ft²



Location

Packed with iconic landmarks and a stone's throw from the City, Whitechapel's unique blend of history, culture and creativity makes it one of London's most vibrant neighbourhoods. It's no wonder so many innovative companies and blue-chip corporates have chosen to make this area their home. Whitechapel is full of world class cultural institutions including old favourites, such as the Whitechapel Gallery and Wilton Hall, as well as exciting newcomers.

Compton

Whitechapel

The Loom
14 Gowers Walk
E1 8PY

Newly refurbished former Victorian Wool Warehouse for rent located a short walk from Aldgate and Aldgate East Stations

For Rent

1,407 to 17,527 ft²



020 7101 2020
compton.london

Building Exterior

Compton

Whitechapel

The Loom
14 Gowers Walk
E1 8PY

Newly refurbished former Victorian Wool Warehouse for rent located a short walk from Aldgate and Aldgate East Stations

For Rent

1,407 to 17,527 ft²



Compton

Whitechapel

The Loom
14 Gowers Walk
E1 8PY

Newly refurbished former Victorian Wool Warehouse for rent located a short walk from Aldgate and Aldgate East Stations

For Rent

1,407 to 17,527 ft²



Compton

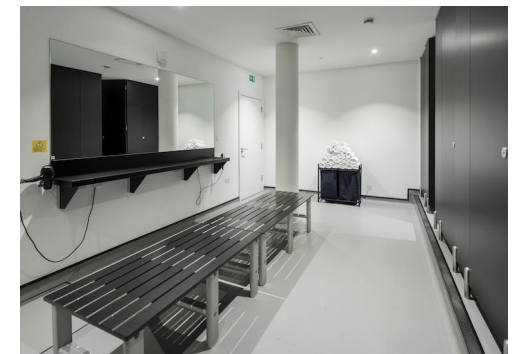
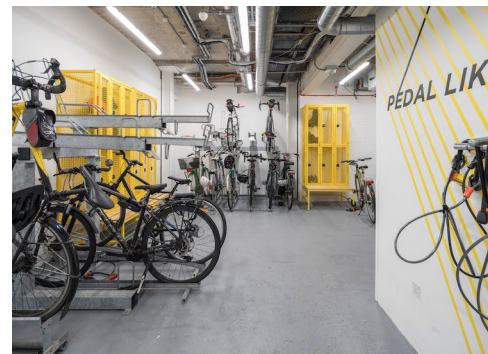
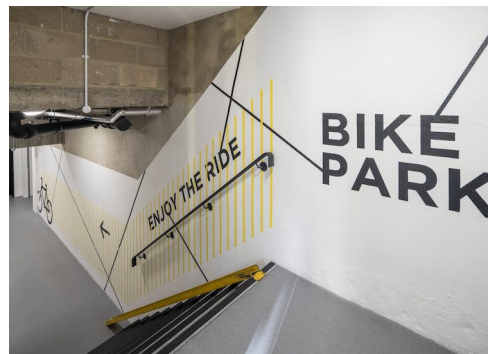
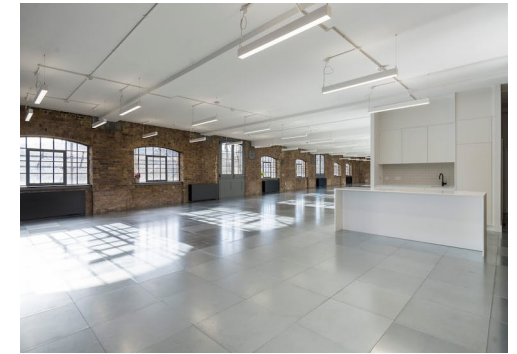
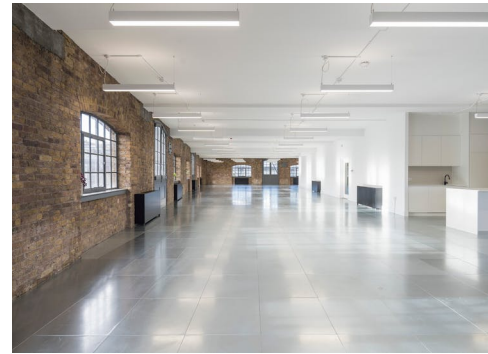
Whitechapel

The Loom
14 Gowers Walk
E1 8PY

Newly refurbished former Victorian Wool Warehouse for rent located a short walk from Aldgate and Aldgate East Stations

For Rent

1,407 to 17,527 ft²



Compton

Whitechapel

The Loom
14 Gowers Walk
E1 8PY

Newly refurbished former Victorian Wool Warehouse for rent located a short walk from Aldgate and Aldgate East Stations

For Rent

1,407 to 17,527 ft²

Amenities

- Units on the 5th floor can be merged to create contiguous space of up to 15,600 sq ft
- Cat A (refurbished) and Cat A+ (fully fitted) units available
- From £32.50 per sq ft or £120.00 per sq ft (on a managed basis)
- Newly refurbished warehouse conversion
- Warehouse/critical style windows
- Excellent natural light
- Modern lighting
- Air conditioning
- Exposed brickwork
- Bike storage and shower facilities

Description

The property is a former Victorian wool factory, which has since been converted into high quality office accommodation to provide a place to work and a place to come together. The Loom provides 110,000 Sq Ft of unique workspace for creative minds in the heart of Whitechapel. Upon entering the building, one is greeted with an impressive reception as you enter through the old loading bay on Gower's Walk. The available office accommodation is located on the LG – 5th (and mezz) floors and has been brilliantly refurbished to provide new metal tile raised flooring, brand new floor mounted air-conditioning, modern suspended lighting, new WC's & shower facilities. Original factory style windows with a generous floor to ceiling height provide an abundance of natural daylight and volume throughout.

Compton

Whitechapel

The Loom
14 Gowers Walk
E1 8PY

Newly refurbished former Victorian Wool Warehouse for rent located a short walk from Aldgate and Aldgate East Stations

For Rent

1,407 to 17,527 ft²

Content

[View in Virtual Reality](#)



[View in Virtual Reality](#)



[View in Virtual Reality](#)



[View on Website](#)



Terms

New full repairing & insuring lease(s) available for a term by arrangement direct from the freeholder

VAT

The property is elected for VAT

Legal Costs

Each party is to bear its own costs

Local Authority

The London Borough of Tower Hamlets

Compton

Whitechapel

The Loom
14 Gowers Walk
E1 8PY

Newly refurbished former Victorian Wool Warehouse for rent located a short walk from Aldgate and Aldgate East Stations

For Rent

1,407 to 17,527 ft²

Floor Areas & Outgoings

The accommodation comprises of the following:

Name	sq ft	Rent (sq ft)	Rates Payable (sq ft)	Service Charge (sq ft)	Total month	Total year	Availability
5th - 5.5 (Cat A / Fully Fitted)	5,705	£49.50	£14	£9.39	£34,653.12	£415,837.45	Available
5th - 5.3 (Cat A / Fully Fitted)	3,450	£49.50	£14	£9.39	£20,955.88	£251,470.50	Available
3rd - 3.6/3.8 (Cat A / Fully Fitted)	2,700	-	£14	£9.39	£5,262.75	£63,153	Under Offer
3rd - 3.1 (Fully Fitted)	1,407	£55	£14	£9.39	£9,191.23	£110,294.73	Available
2nd - 2.4 (Cat A / Fully Fitted)	1,181	-	£14	£9.39	£2,301.97	£27,623.59	Under Offer
1st - 1.3 (Fully Fitted)	1,862	£55	£14	£9.39	£12,163.52	£145,962.18	Available
Ground - G2 (Cat A / Fully Fitted)	2,308	£42.50	£14	£9.39	£12,672.84	£152,074.12	Available
Lower Ground - LG3 (Cat A / Fully Fitted)	2,795	£32.50	£14	£9.39	£13,017.71	£156,212.55	Available

Name	sq ft	Rent (sq ft)	Rates Payable (sq ft)	Service Charge (sq ft)	Total month	Total year	Availability
Total	21,408	£47.33	£14	£9.39	£110,219.02	£1,322,628.12	

Compton

Contact Us

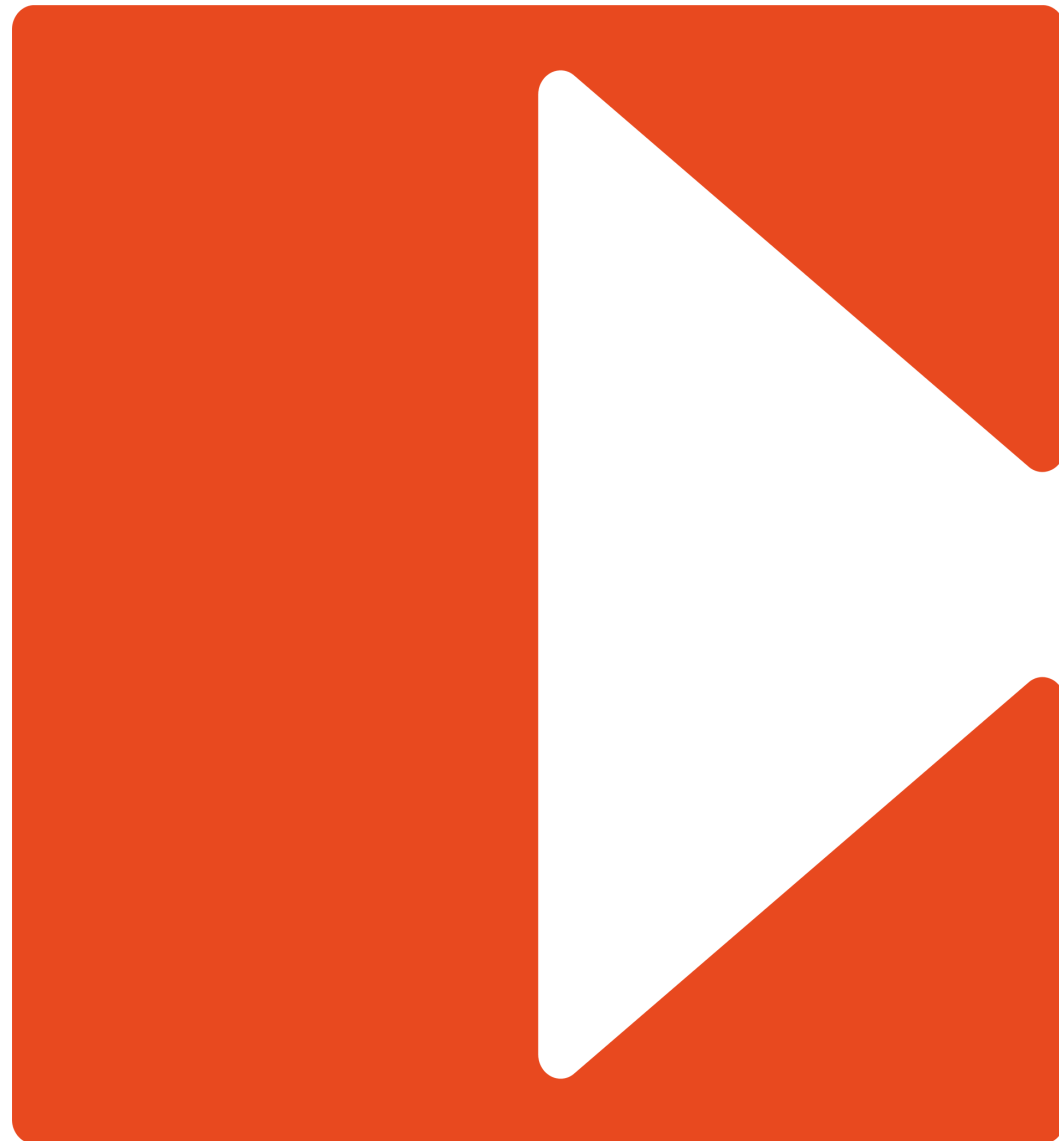
All appointments to view must be arranged via sole agents, Compton, through —

Joshua Miller
jm@compton.london
07917 725 365

Elliott Stern
es@compton.london
07834 918700

Jake Kinsler
jk@compton.london
07840 638668

Sonia Oberoi
so@compton.london
+44 (0) 7483 882 598



020 7101 2020
[compton.london](https://www.compton.london)

Compton gives notice that these particulars are set out as a general outline only for the guidance of intending Purchasers or Lessees and do not constitute any part of an offer or contract. Details are given without any responsibility and any intending Purchasers, Lessees or Third Party should not rely on them as statements or representations of fact, but must satisfy themselves by inspection or otherwise as to the correctness of each of them. No person employed or engaged by Compton has any authority to make any representation or warranty whatsoever in relation to this property. Compton is the licensed trading name of Compton RE Disposals Limited. Company registered in England & Wales no. Registered office: 47 St John's Square, Clerkenwell, London, EC1V 4JJ
Generated on 02/01/2024