

# 300 WEST PRATT STREET

Baltimore, MD 21201

## Office For Lease

1,797 - 9,804 SF



Leasing Information:  
410.659.1234

# Lincoln

**Brent Prossner**  
410.659.1234 x122  
bprossner@lpc.com

**Kyle Bell**  
410.659.1234 x117  
kbell@lpc.com

3904 Boston Street  
Suite 404  
Baltimore, MD 21224

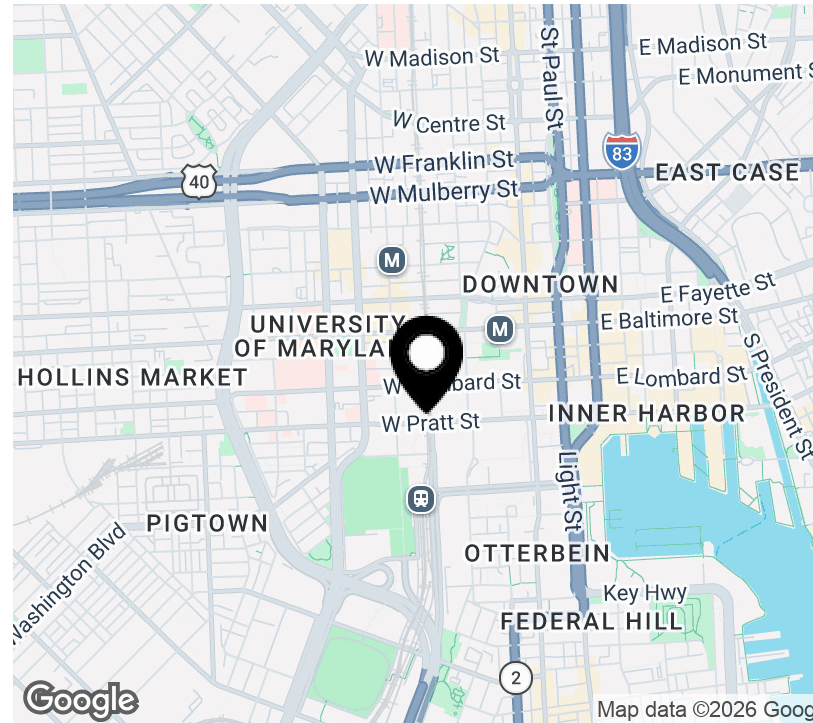
[www.lpc.com](http://www.lpc.com)

# 300 WEST PRATT STREET

Baltimore, MD 21201

Office For Lease

1,797 - 9,804 SF



## Property Highlights

- Class A office building in premier location
- Above standard finishes
- On-site security
- 1st floor retail to include Chipotle, Dunkin Donuts, and Luna Del Sea
- 36 on-site parking spaces, plus located across the street from a public parking garage
- Located across the street from Camden Yards, Baltimore Convention Street, etc.
- Walking distance to 2 light rail stops and the MARC train (Camden Station)
- Free parking and passes for local gym membership for new tenants
- Small suites available
- Single offices or desks available

## Availabilities

## SF

## Date Available

Suite 250	1,797 SF	Immediately
Suite 260	1,903 SF	Immediately
Suite 310	6,813 SF	Negotiable
Suite 350	3,375 SF	Immediately
Suite 400	2,750 SF	Immediately
Suite 450	8,067 SF	Immediately
Suite 500	2,206 - 9,804 SF	Immediately

**Brent Prossner**

**Kyle Bell**

410.659.1234 x122

410.659.1234 x117

bprossner@lpc.com

kbell@lpc.com

**Lincoln**

# 300 WEST PRATT STREET

Baltimore, MD 21201

Above Standard Finishes

1,797 - 9,804 SF



**Brent Prossner**

410.659.1234 x122  
bprossner@lpc.com

**Kyle Bell**

410.659.1234 x117  
kbell@lpc.com

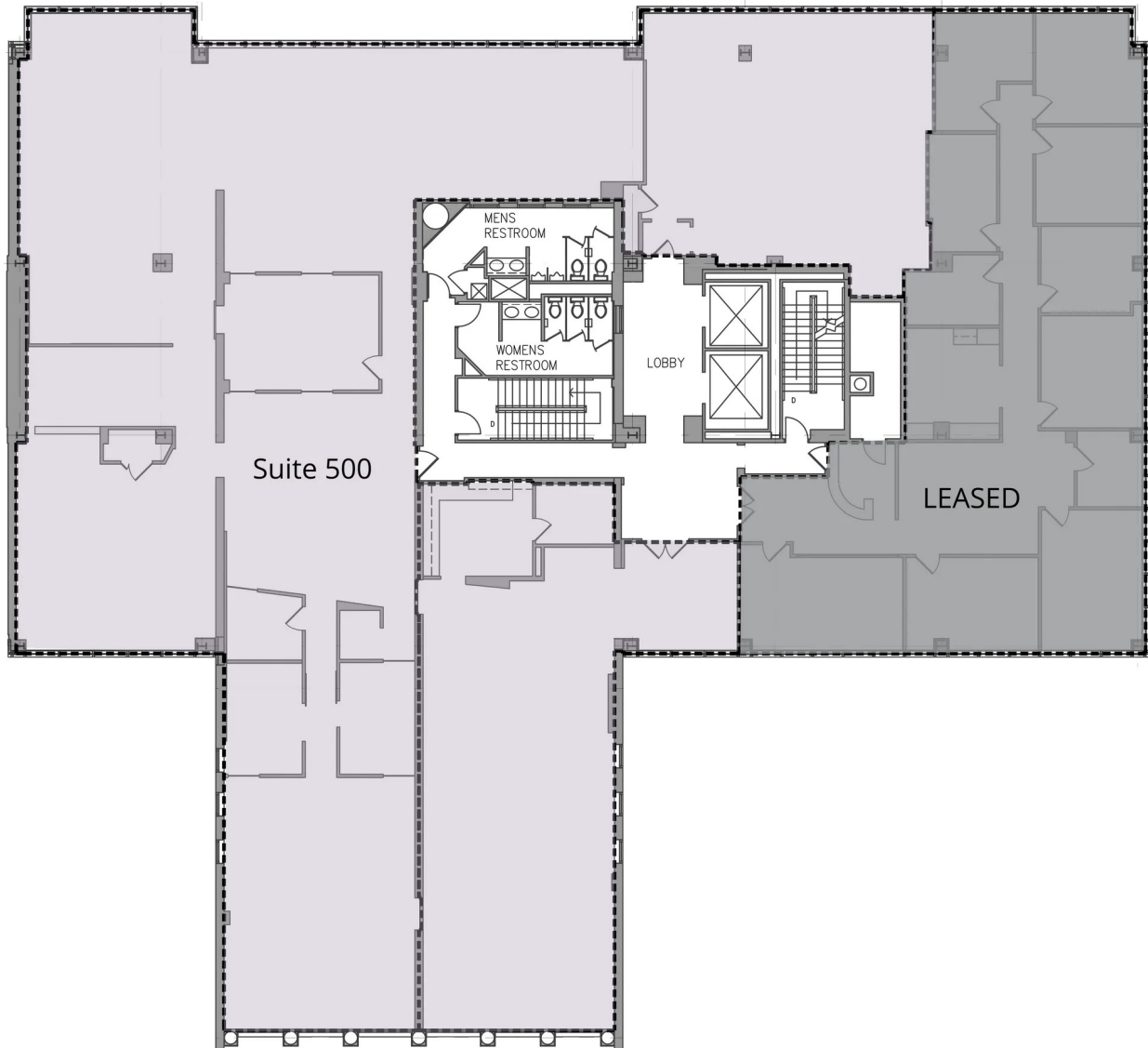
**Lincoln**

# 300 WEST PRATT STREET

Baltimore, MD 21201

Suite 500

2,206 - 9,804 SF



Suite	Size	Description
■ Suite 500	2,206 - 9,804 SF	Available immediately

**Brent Prossner**

410.659.1234 x122  
bprossner@lpc.com

**Kyle Bell**

410.659.1234 x117  
kbell@lpc.com

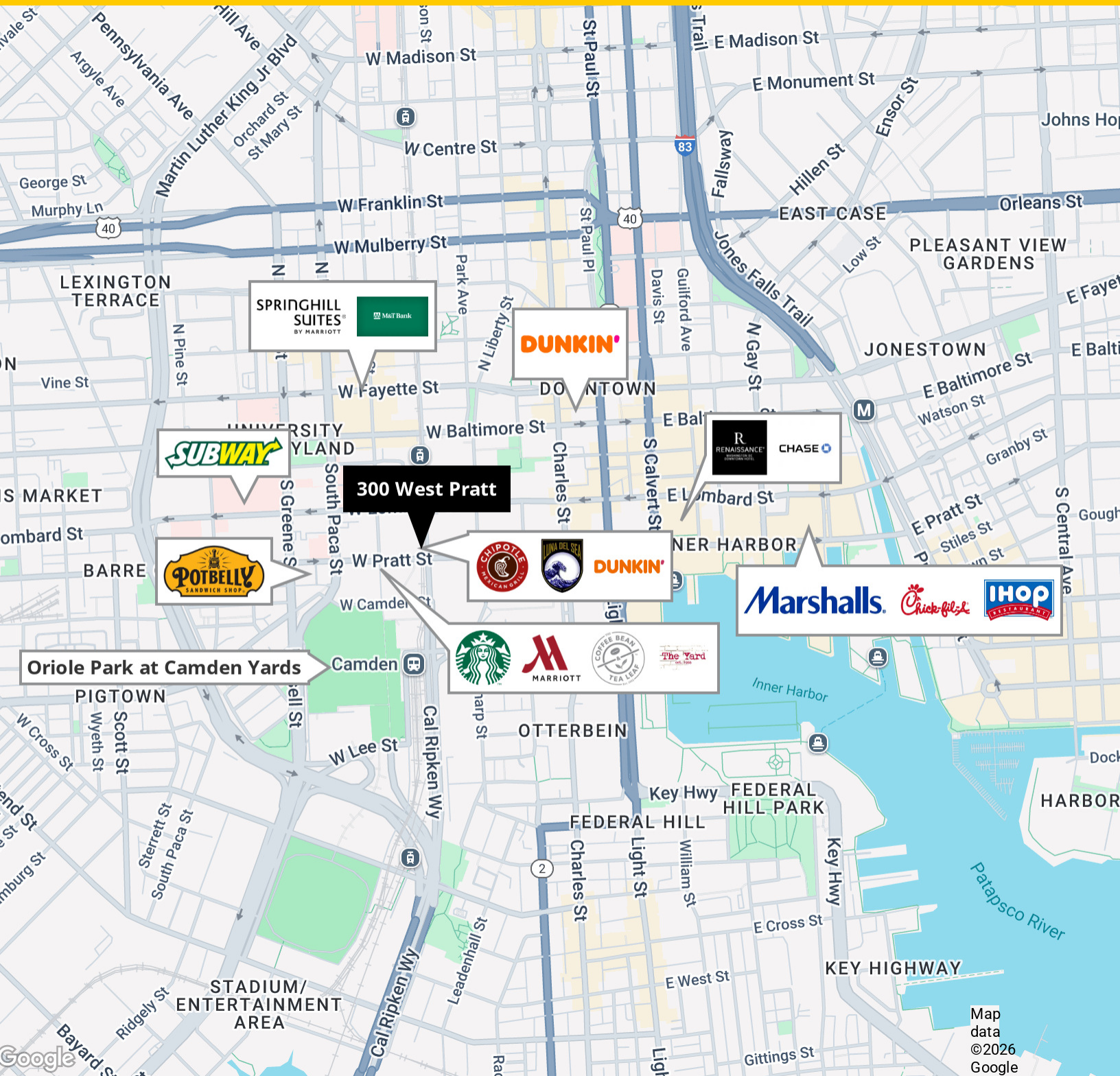
**Lincoln**

# 300 WEST PRATT STREET

Baltimore, MD 21201

Location Map

1,797 - 9,804 SF



Map data ©2026 Google

**Brent Prossner**  
410.659.1234 x122  
bprossner@lpc.com

**Kyle Bell**  
410.659.1234 x117  
kbell@lpc.com

# Lincoln



# 300 WEST PRATT STREET

Baltimore, MD 21201

Leasing Information:  
410.659.1234

**Brent Prossner**  
410.659.1234 x122  
bprossner@lpc.com

**Kyle Bell**  
410.659.1234 x117  
kbell@lpc.com

## Lincoln

3904 Boston Street  
Suite 404  
Baltimore, MD 21224

[www.lpc.com](http://www.lpc.com)