

MEDICAL OFFICE FOR LEASE

*±787 SF - 3,301 SF Medical
Office Condos in San Jose*

SUITE 201 ±2,514 SF

SUITE 202 ±787 SF

COMBINED SUITES ±3,301 SF

2039 FOREST AVE, SUITES 201 & 202
SAN JOSE, CA 95128

AARON FRITZ, CCIM

408.588.2398

aaron.fritz@kidder.com

LIC N° 01216555

CONOR BURLING

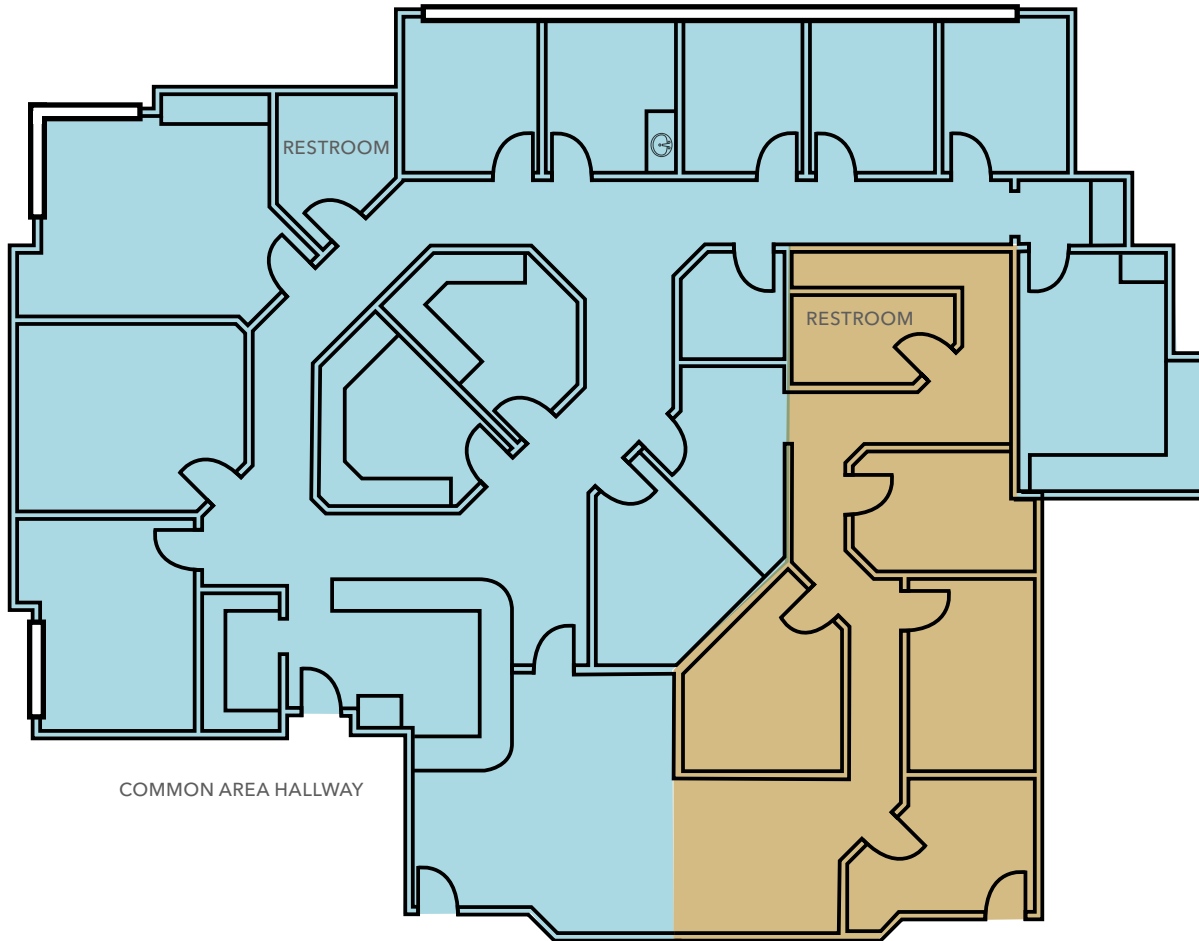
408.588.2341

conor.burling@kidder.com

LIC N° 02235389

KIDDER.COM





LEGEND

Suite	Size
201	2,514 SF
202	787 SF

FLOOR PLAN NOT TO SCALE

AVAILABLE FOR LEASE

Building Highlights

Elevator served

Walking distance to O'Connor Hospital and convenient access to Santa Clara Valley Medical Center

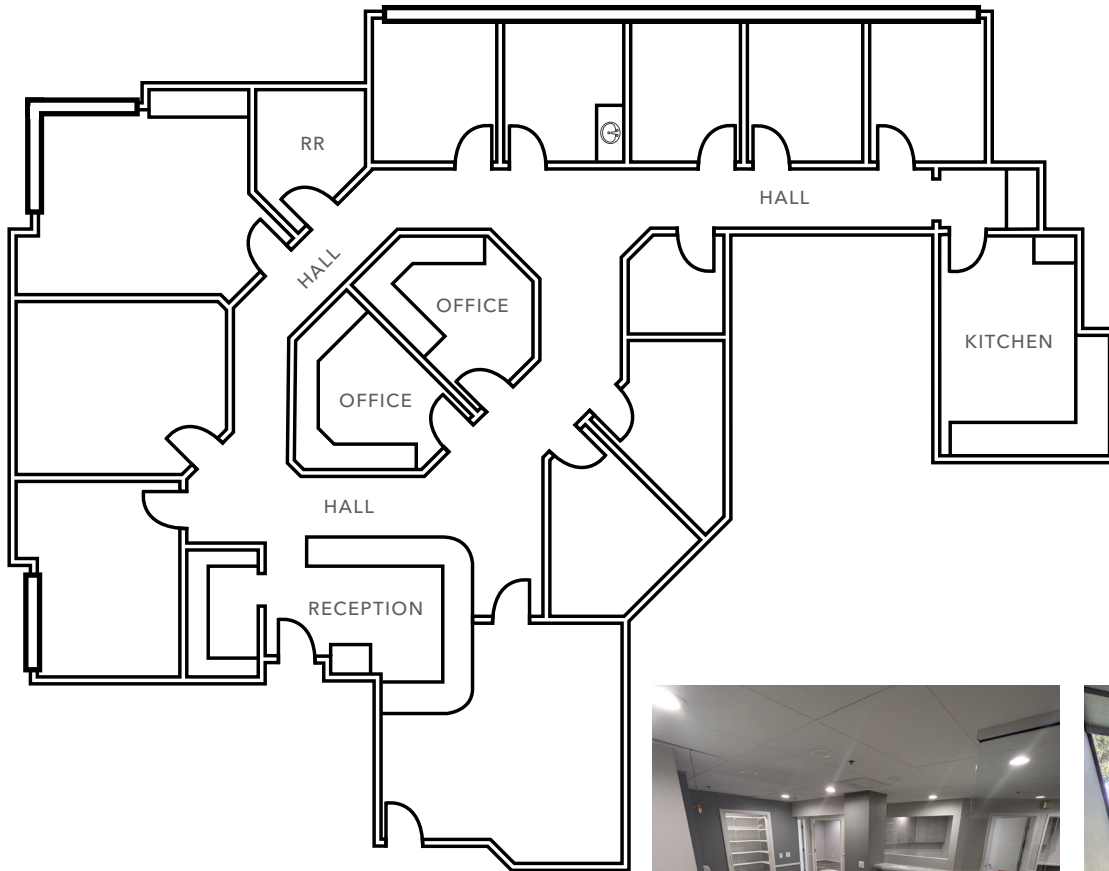
On-site covered parking

Call broker to tour

±787 - ±3,301 SF

AVAILABLE

FLOOR PLAN | SUITE 201



±2,514 SF

AVAILABLE

NOW

AVAILABLE

6-8 exam rooms and 2-4 private offices

Open waiting room and reception area

In-suite staff lounge

In-suite ADA restroom

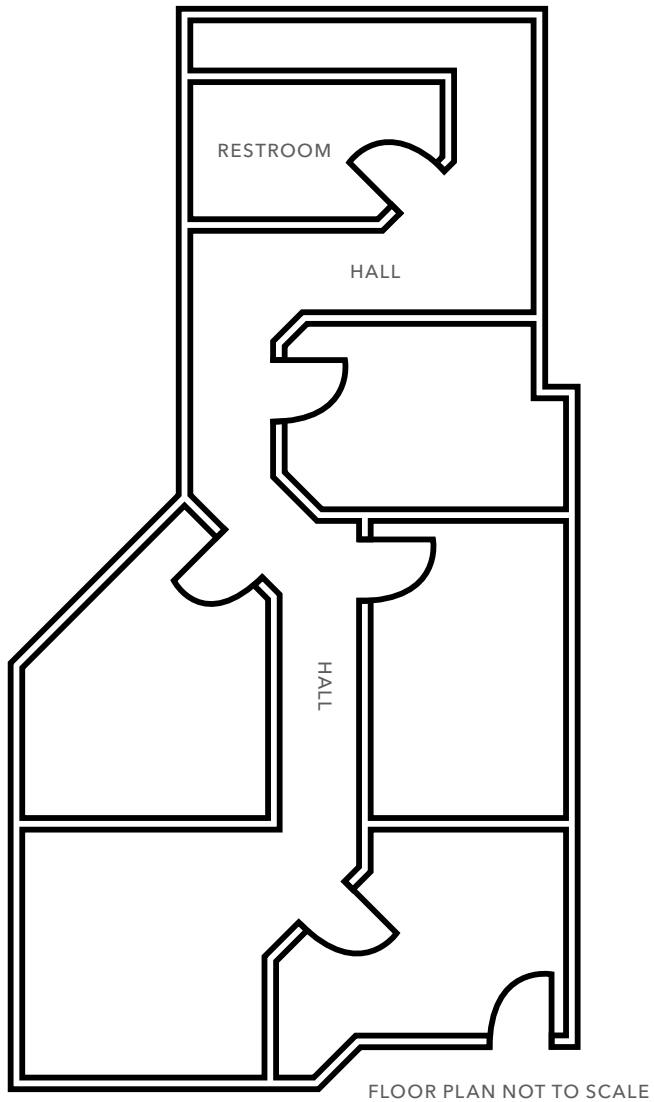
FLOOR PLAN NOT TO SCALE



AVAILABLE FOR LEASE

KIDDER MATHEWS

FLOOR PLAN | SUITE 202



±787 SF

AVAILABLE

NOW

AVAILABLE

1-3 exam rooms

1 private office

Reception area and waiting room

In-suite restroom



For more information, contact

AARON FRITZ, CCIM
 408.588.2398
 aaron.fritz@kidder.com
 LIC N° 01216555

CONOR BURLING
 408.588.2341
 conor.burling@kidder.com
 LIC N° 02235389

KIDDER.COM

This information supplied herein is from sources we deem reliable. It is provided without any representation, warranty, or guarantee, expressed or implied as to its accuracy. Prospective Buyer or Tenant should conduct an independent investigation and verification of all matters deemed to be material, including, but not limited to, statements of income and expenses. Consult your attorney, accountant, or other professional advisor. All Kidder Mathews designs are the sole property of Kidder Mathews. Branded materials and layouts are not authorized for use by any other firm or person.

