

FOR LEASE

WHITNEY
Commercial Real Estate Services

367 SPEEDVALE AVE W, GUELPH



CROSS - DOCK TRUCKING FACILITY FOR LEASE

Fully paved, gated and secured trucking facility in a prime Guelph location, approximately 14km from Highway 401.

The facility includes 2 drive-through repair bays with 20' ceilings and a cross - dock warehouse. The office space features a large boardroom, private offices, lunch room and an open concept area.

The property backs onto a CN Rail line with potential for a spur onto the property.



150 Truck Parking Stalls

BUILDING AREA | 15,500 SF

LAND AREA | 6.4 Acres

ZONING | B

DRIVE-IN DOORS | 4 - (12' x 16')

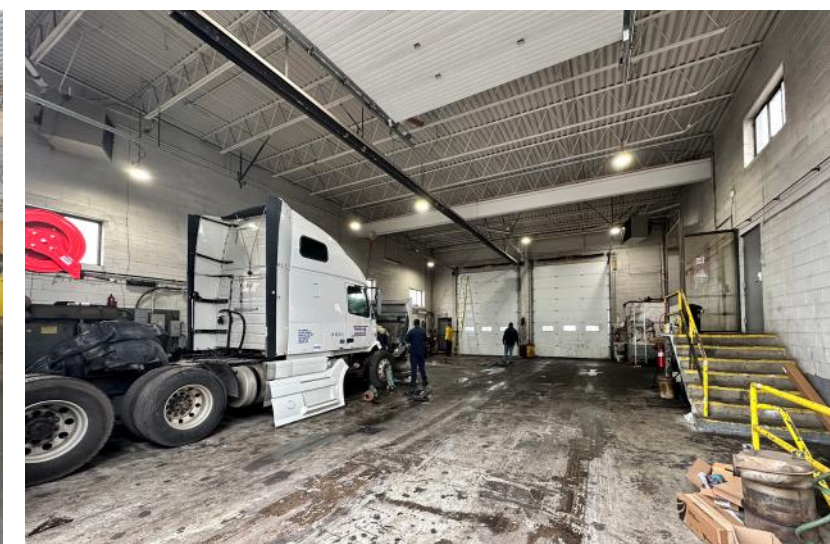
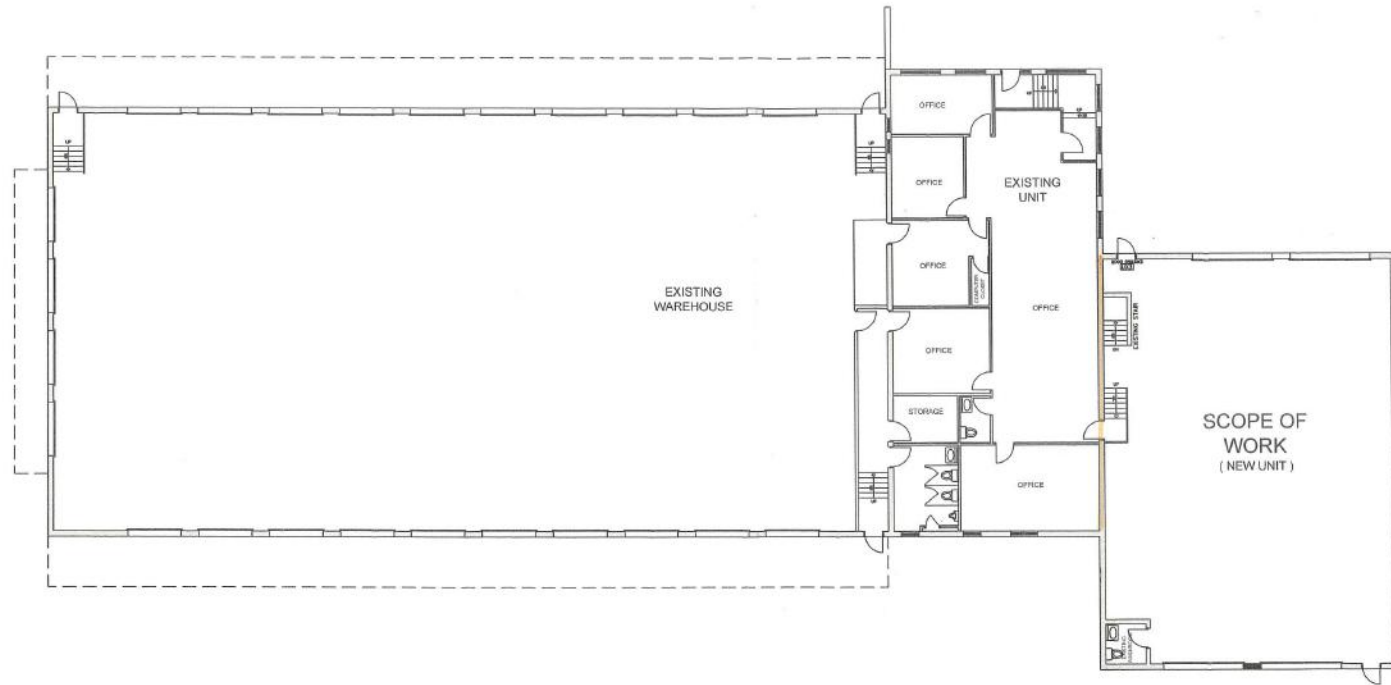
TRUCK LEVEL DOORS | 24 - (10' x 10')

CLEAR HEIGHT | 12' - 20'

LEASE RATE | \$50,000 / Month Net

PROPERTY TAXES | \$60,900.46 (2025)

FLOORPLAN



PERMITTED USES

- Catering Service
- Cleaning Establishment
- Commercial School
- Computer Establishment
- Food Vehicle in accordance with Section 4.30
- Manufacturing
- Print Shop
- Repair Service
- Research Establishment
- Towing Establishment
- Tradesperson's Shop
- Trucking Operation
- Warehouse



Close to HWY 6



Drive-in & Truck Level Doors



12' - 20' Clear Height



Amenities Nearby



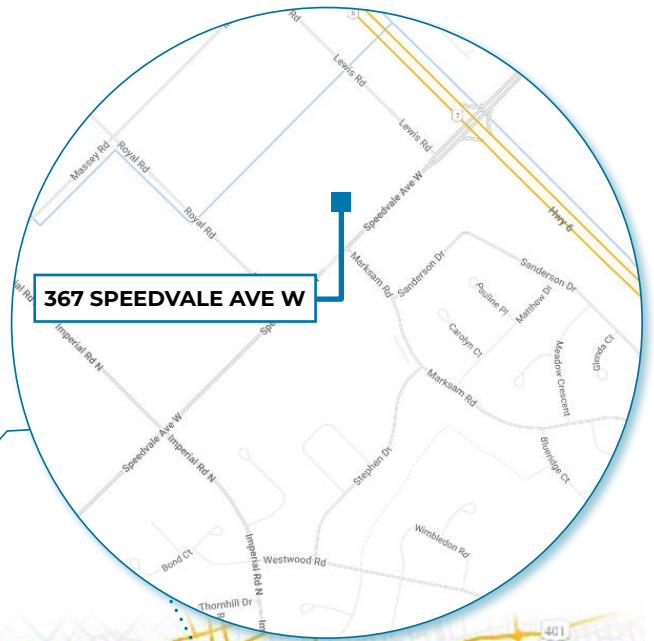
Transit Nearby



Prime Location

LOCATION

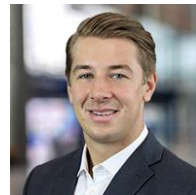
HWY 401 - 14KM
KITCHENER - 20KM
CAMBRIDGE - 24KM
MISSISSAUGA - 70 KM
TORONTO PEARSON INT'L AIRPORT - 81 KM
TORONTO - 94 KM
LONDON - 120 KM



Contact us for more information



Michael Lambert*, SIOR
Managing Partner, 2x Olympian
519.590.0286
michael.lambert@whitneyre.com



Matthew Hayward
Senior Sales Representative
519.270.4691
matthew.hayward@whitneyre.com

WHITNEY
Commercial Real Estate Services

WHITNEY & Company Realty Limited, Brokerage
103 Bauer Place, Suite 2, Waterloo, ON N2L 6B5

519.746.6300 | www.whitneyre.com

The information provided herein, including but not limited to images, assumptions, estimates, and descriptions (the "Information"), is obtained from sources considered reliable. However, WHITNEY & Company Realty Limited ("Whitney") and its representatives, agents, or brokers do not warrant, guarantee, or make any representations as to the accuracy, correctness, or completeness of the Information. Whitney disclaims any liability or responsibility for the information or for any reliance the recipient places upon it. Recipients are advised to perform their own due diligence to verify the Information before relying on it. The Information is subject to change, and any property referenced herein may be withdrawn from the market at any time without prior notice. Property outlines are approximate and may not represent actual boundaries. All Rights Reserved. © Whitney & Company Realty Limited, Brokerage - 2025

**Broker *Sales Representative