

PORTMAN
WORK • WELL



29

Gloucester Place

ALL-INCLUSIVE MANAGED
OFFICES IN MARYLEBONE





The Building

- 04 Features
- 05 What's included
- 06 Suites



The Neighbourhood

- 16 Portman Marylebone
- 17 Explore The Neighbourhood
- 18 Loxton Walk
- 19 Travel Connections
- 20 The Orchard



The Team

- 21 The Portman Estate & The Agents



Introducing Portman WorkWell

At Portman WorkWell we are redefining workspaces in Marylebone by offering offices that combine professionalism with comfort. All located within our 110 acre Marylebone Estate set in beautiful Georgian properties, reimaged for a modern business.

Experience the perfect balance of functionality and homeliness, tailored for modern professionals and growing businesses. In each Portman WorkWell building everything is included in the price so you can focus on your business. Our spaces come fully fitted ready for you to move in and plug in from the moment you have the keys. All Portman WorkWell spaces have a dedicated community manager, stocked communal kitchen, daily cleaning and wifi as standard, and rent is inclusive of business rates, service charge and all utilities.















29 Gloucester Place

SHAPE YOUR WORKDAY WITH PORTMAN WORKWELL

Perfectly positioned in the heart of Marylebone, 29 Gloucester Place offers an exceptional London address just moments from the bustling shops and cafés of Oxford Street and the elegance of Regent's Park and Hyde Park. Surrounded by historic charm and modern amenities, this prestigious address combines the best of central London living with a sense of refined tranquility.

FEATURES

-  Grade II listed Georgian Townhouse
-  High ceilings
-  Two outdoor terraces
-  Fully fitted and managed units
-  Seamless app entry to the building
-  Blend of period charm and modern functionality
-  Communal lounge
-  End of trip facilities
-  Energy performance: EPC rating B
-  Monthly social events



What's Included

AT PORTMAN WORKWELL, WE MAKE RUNNING YOUR BUSINESS EFFORTLESS.

From fresh coffee to daily cleaning, every essential is included in your rent — no hidden fees, no extra hassle. Just one all-inclusive monthly price, so you can focus on what matters most: growing your business.



Rent



Business Rates



Service Charge



Daily cleaning



Utilities



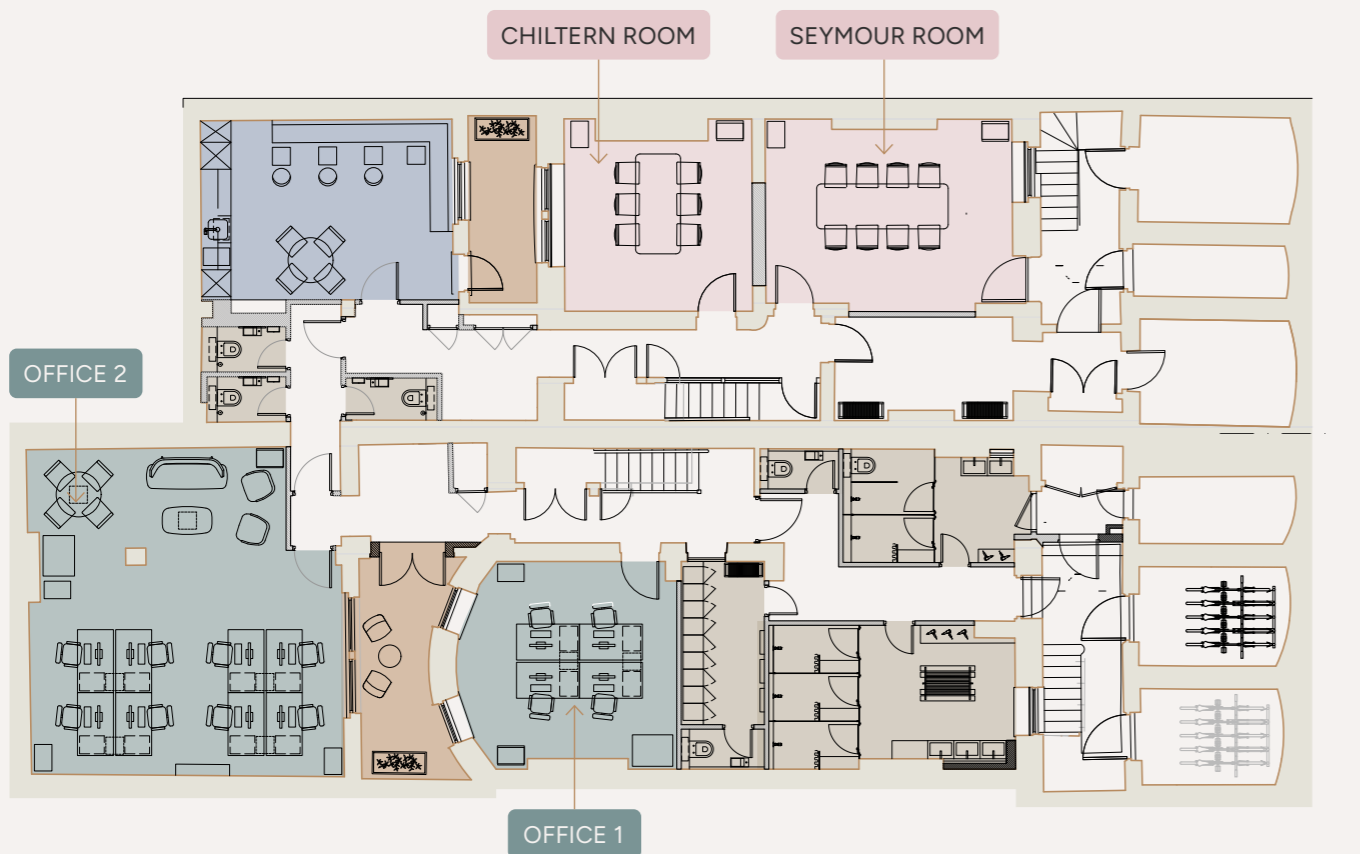
Wifi



Stocked communal kitchen and shared coffee machines



Discounted membership to The Orchard



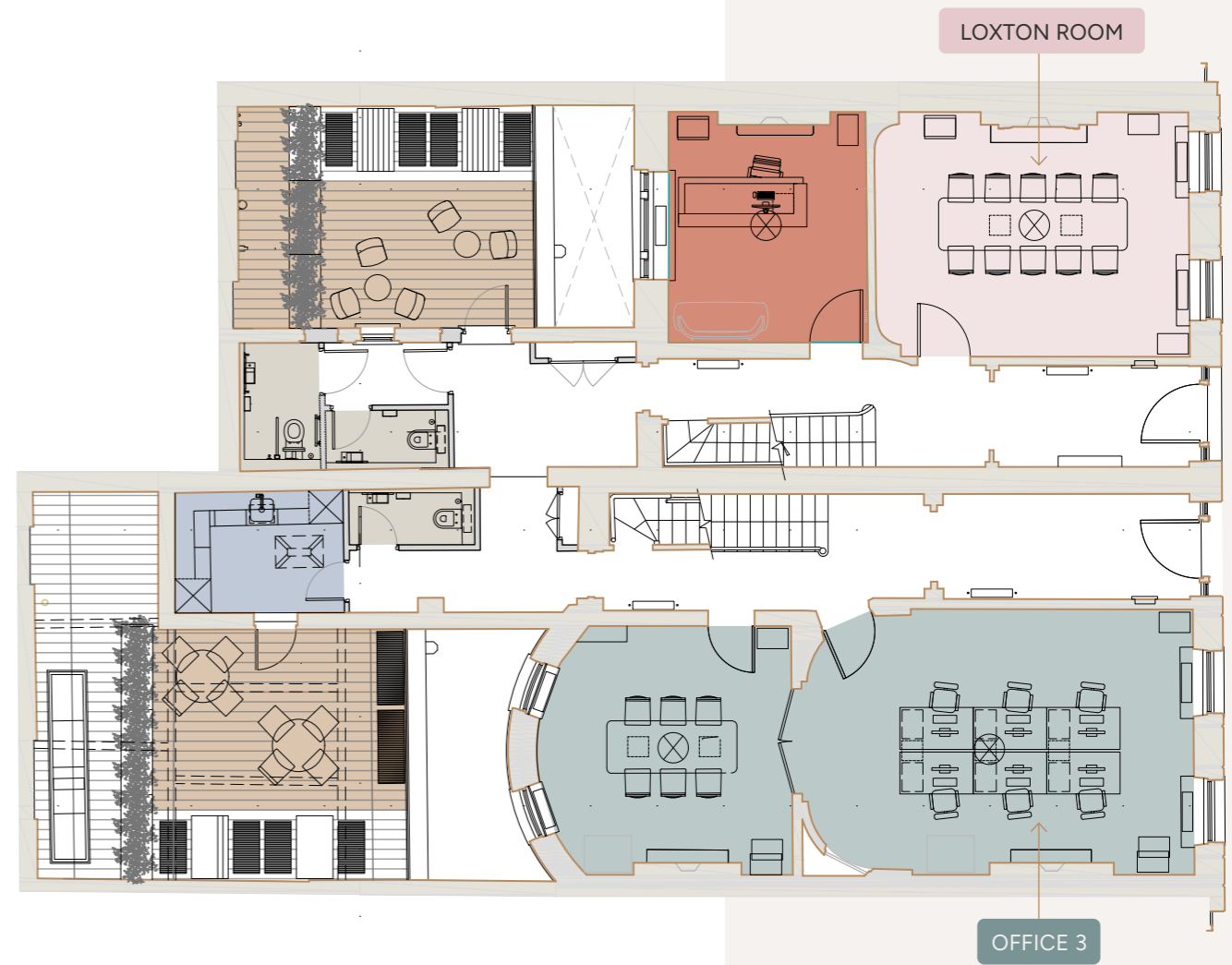
Lower Ground Floor





OFFICE 1		OFFICE 2	
	Price per calendar month	£2,825	£6,463
	SQ FT	226	517
	Desks	4	8
	Tea point	1	2








- Offices
- Bookable meeting rooms
- Shared kitchen
- Terraces and outside space
- Bathrooms and end of trip facilities
- Common area / stairwell

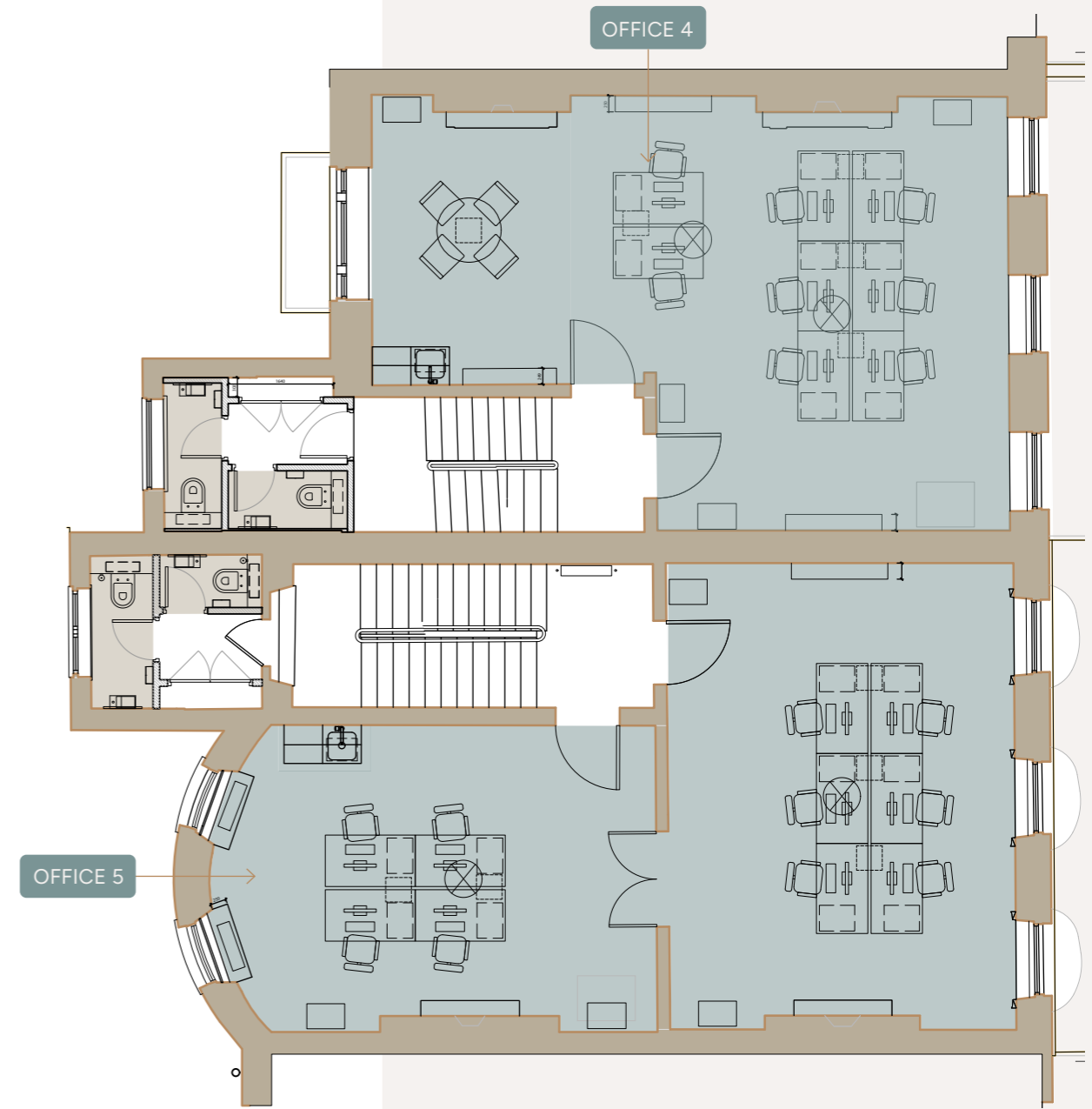


Ground Floor



OFFICE 3	
 Price per calendar month	£9,210
 SQ FT	614
 Desks	6
 Meeting rooms	1

-  Offices
-  Terraces and outside space
-  Bookable meeting rooms
-  Bathrooms
-  Shared kitchen
-  Reception
-  Common area / stairwell



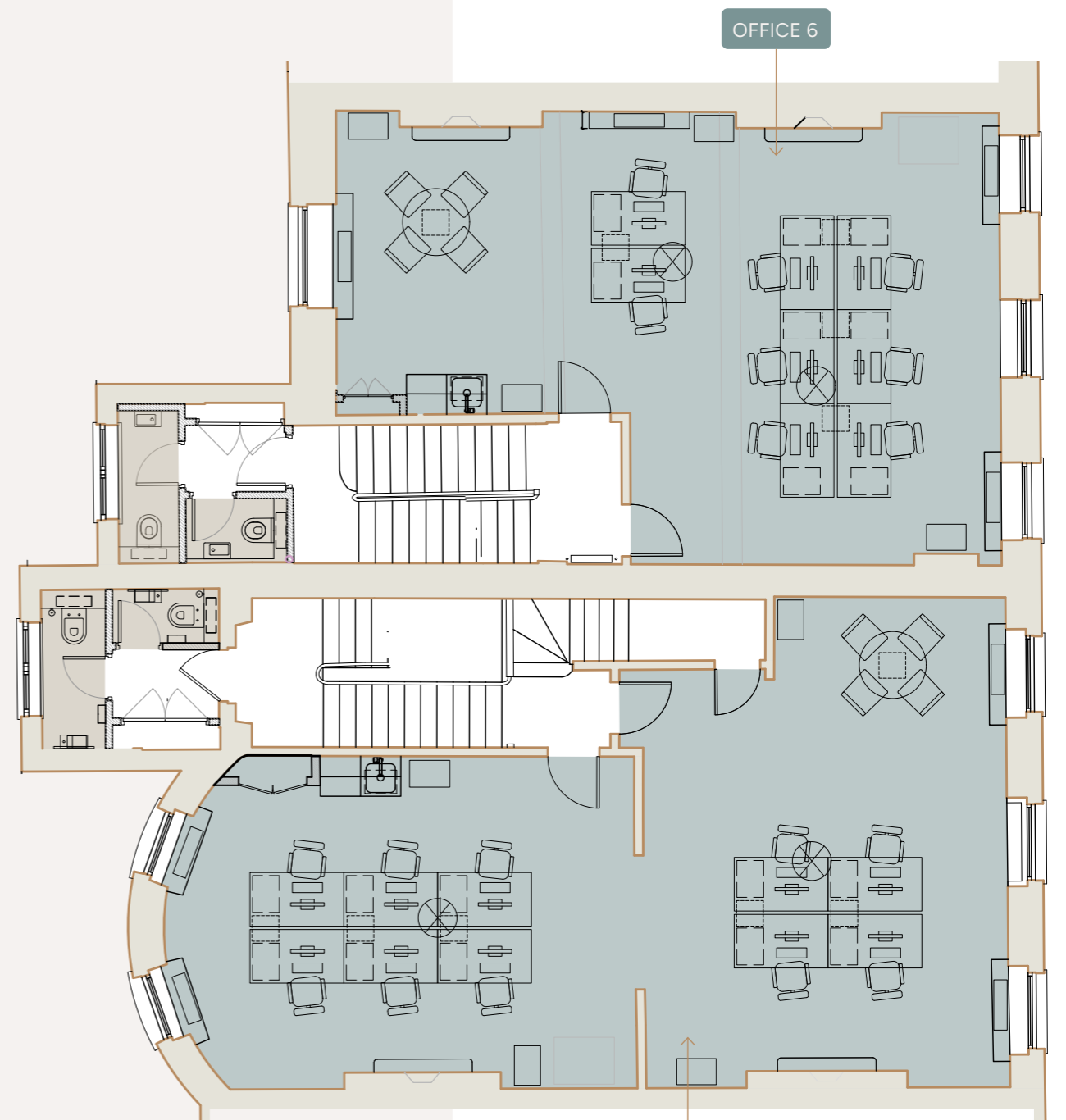
● Offices ● Bathrooms ○ Common area / stairwell

First Floor











OFFICE 4	
Price per calendar month	£9,045
SQ FT	603
Desks	8
Breakout space	1
Tea point	1




OFFICE 5	
Price per calendar month	£11,295
SQ FT	753
Desks	10
Tea point	1





Second Floor

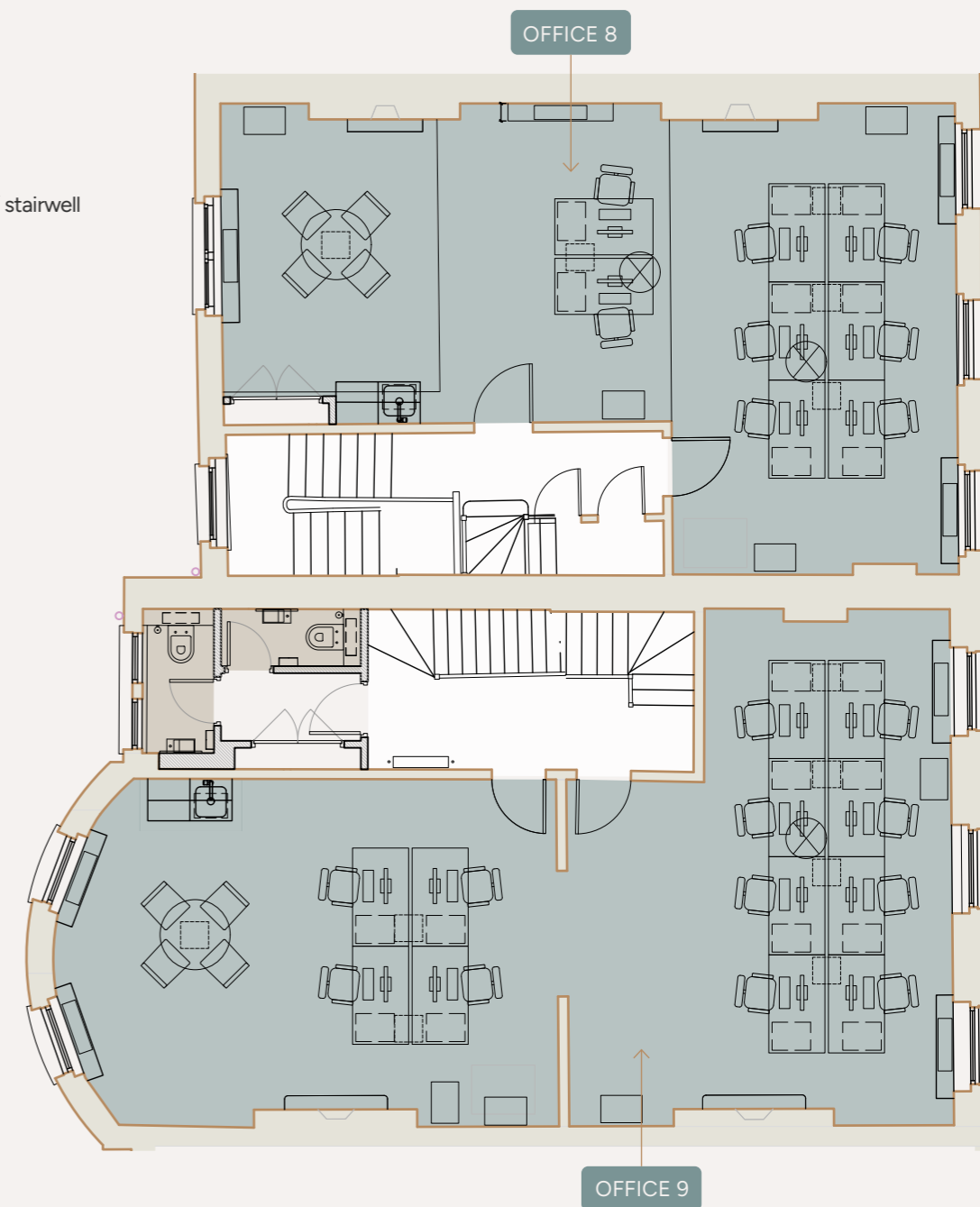
OFFICE 6		OFFICE 7	
 Price	£8,453	 Price	£10,668
 SQ FT	603	 SQ FT	753
 Desks	8	 Desks	10
 Breakout space	1	 Breakout space	1
 Tea point	1	 Tea point	1











-  Offices
-  Bathrooms
-  Common area / stairwell

Third Floor

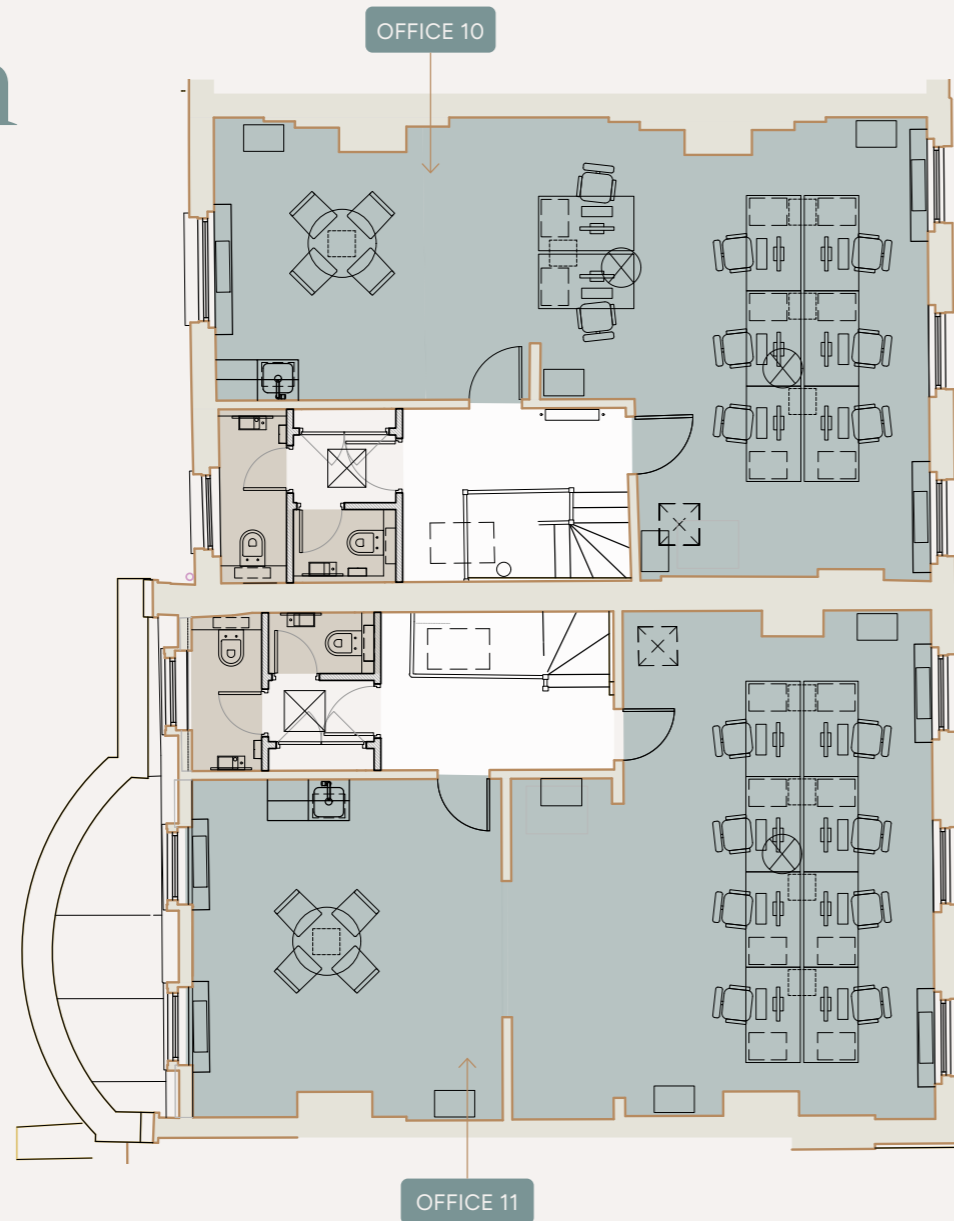


- Offices
- Bathrooms
- Common area / stairwell













OFFICE 8		OFFICE 9	
 Price per calendar month	£7,893	 Price per calendar month	£9,760
 SQ FT	592	 SQ FT	732
 Desks	8	 Desks	12
 Breakout space	1	 Breakout space	1
 Tea point	1	 Tea point	1

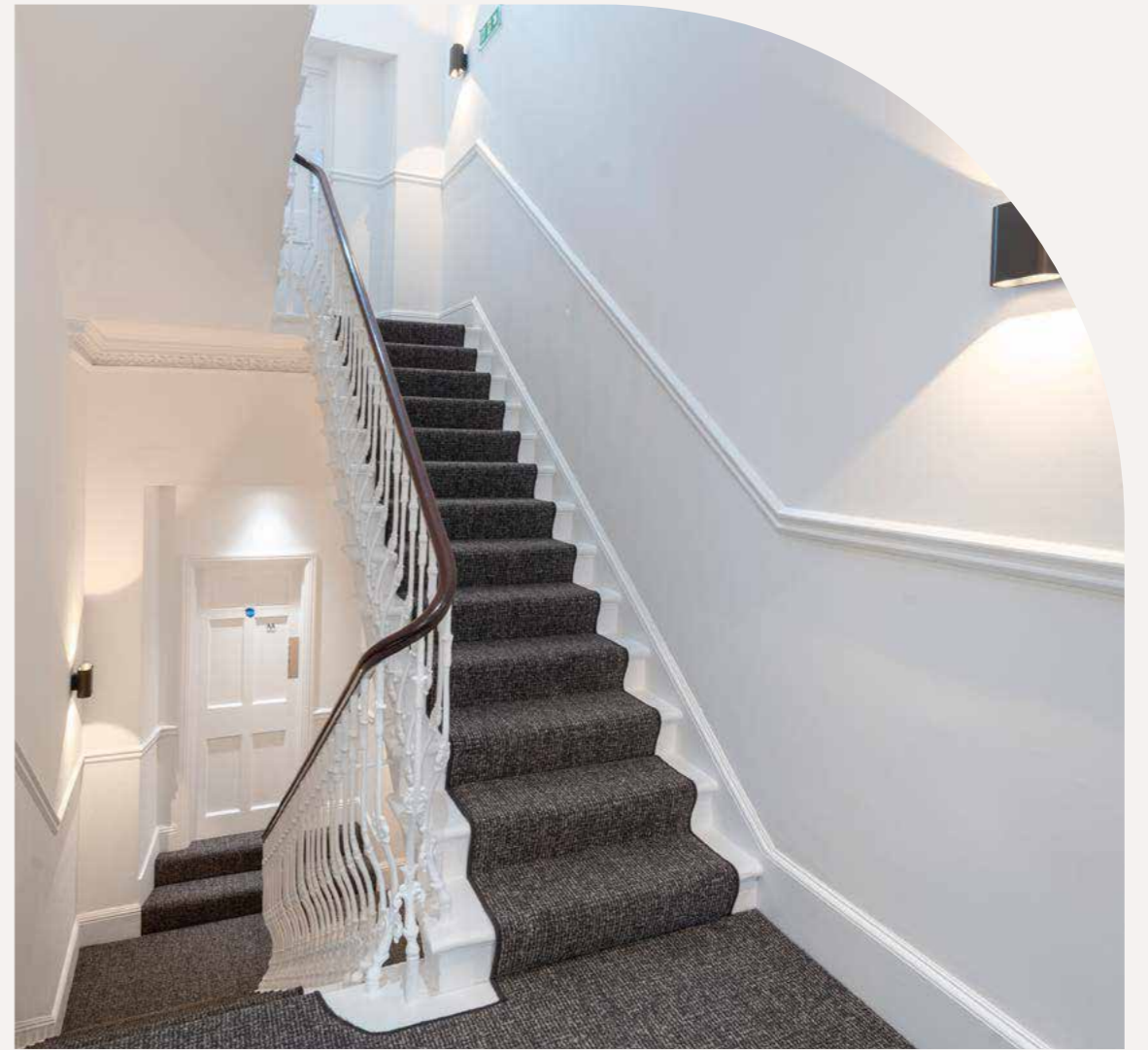
Fourth Floor

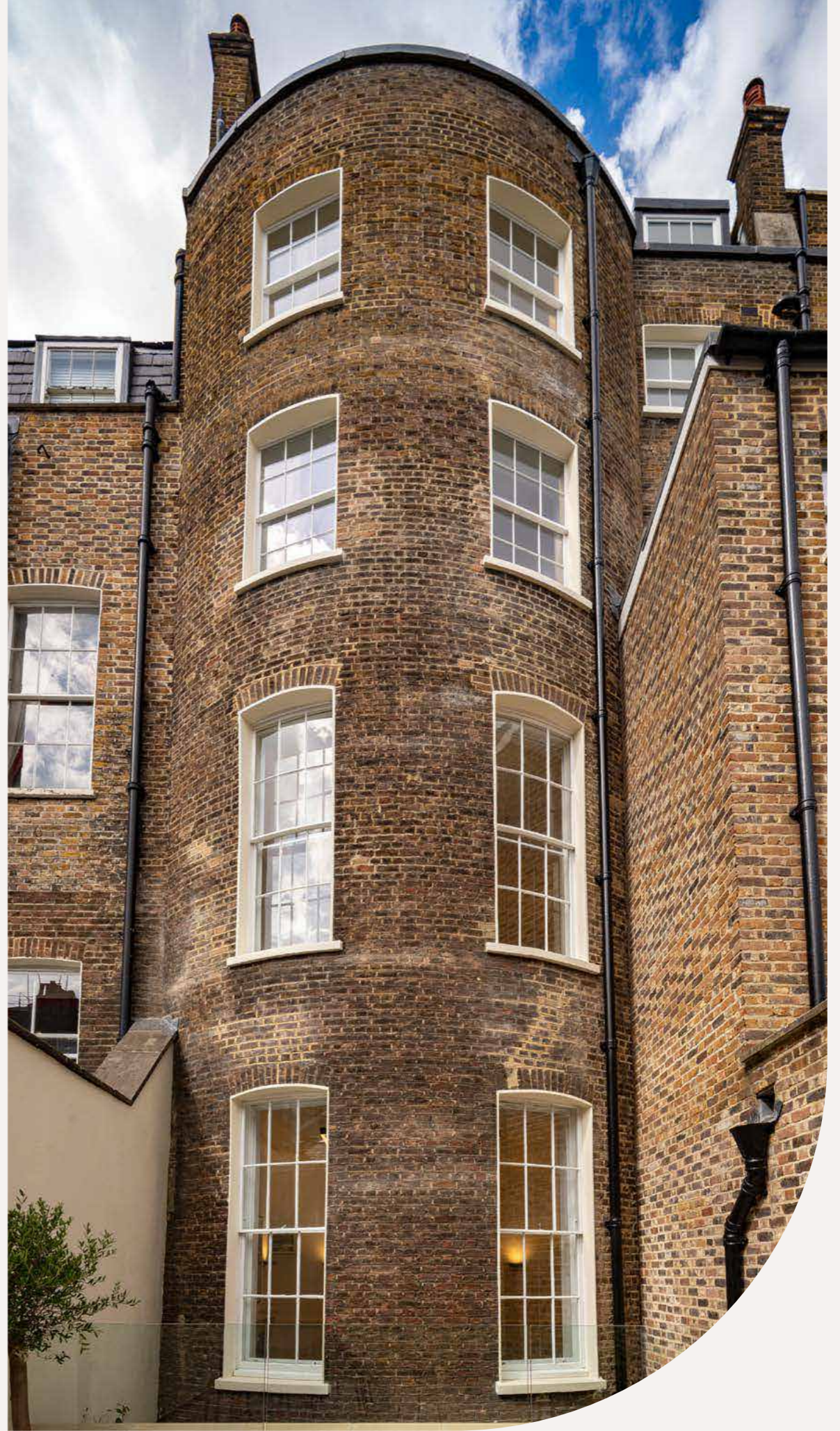


- Offices
- Bathrooms
- Common area / stairwell

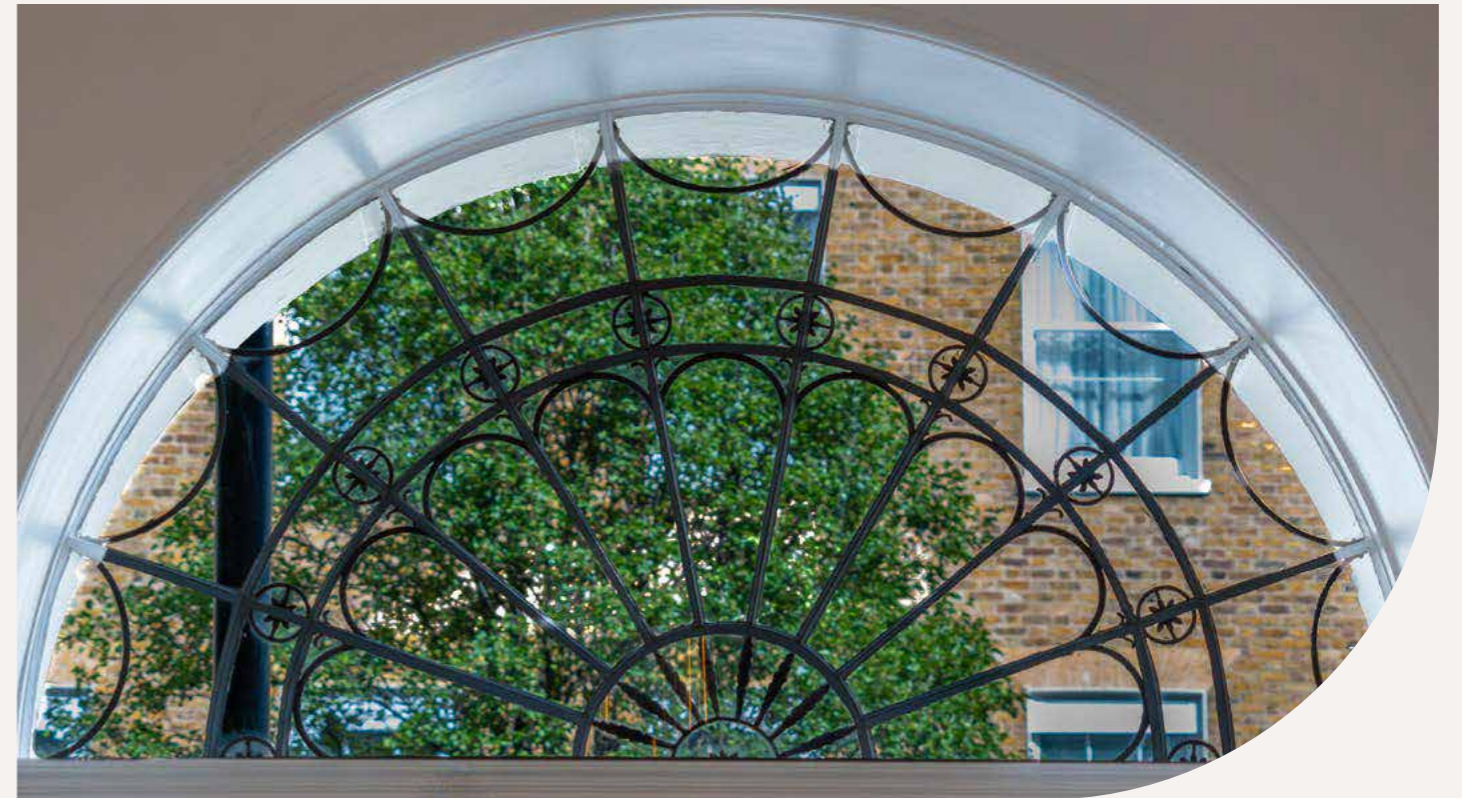
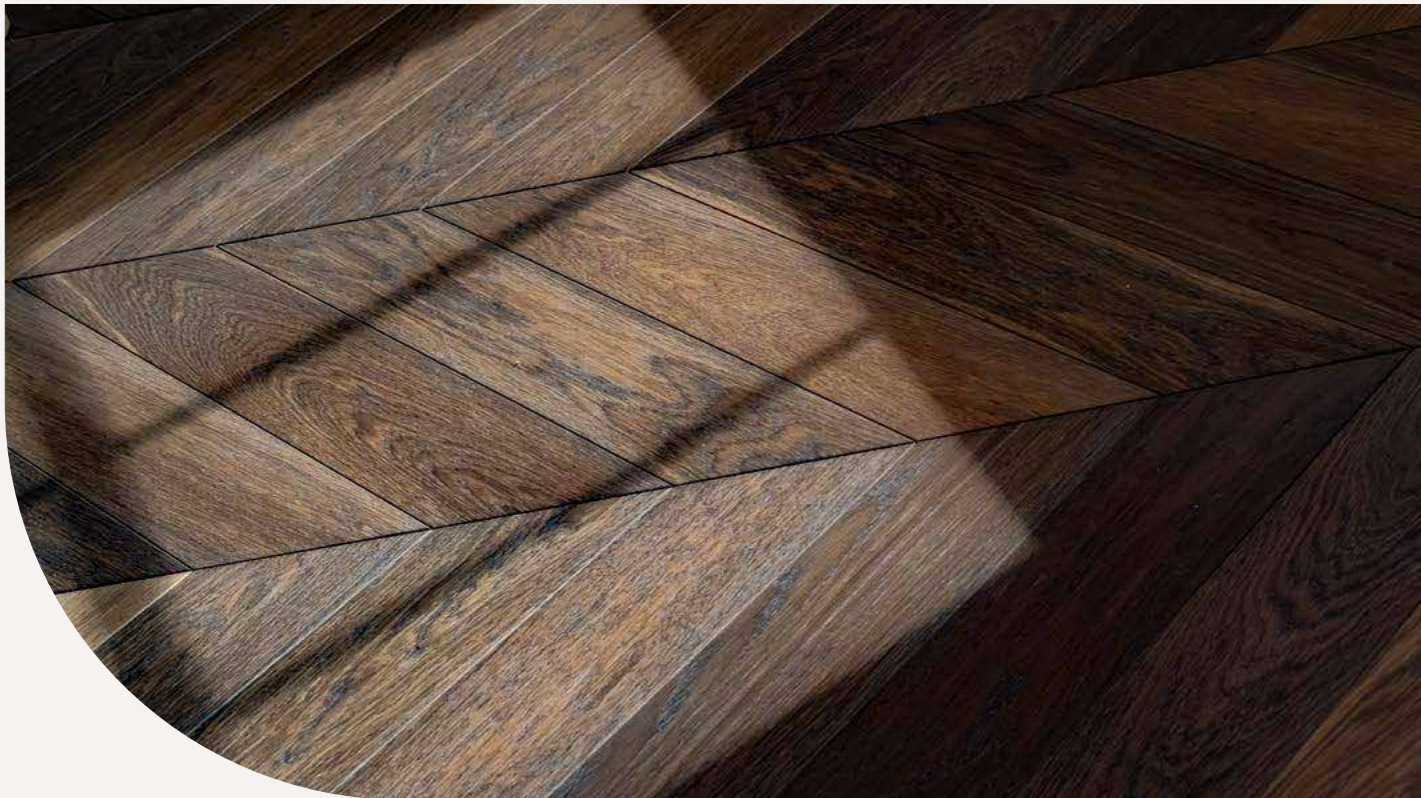
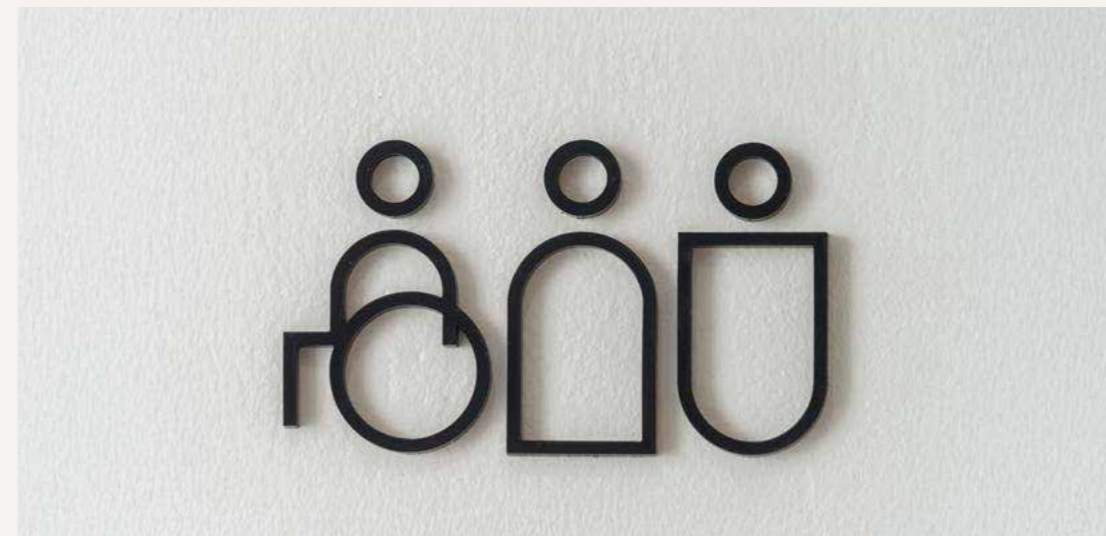
OFFICE 10		OFFICE 11	
 Price per calendar month	£7,125	 Price per calendar month	£8,363
 SQ FT	570	 SQ FT	669
 Desks	8	 Desks	8
 Breakout space	1	 Breakout space	1
 Tea point	1	 Tea point	1













Portman Marylebone, a community with character



Nestled between Hyde Park and Regents Park, Portman Marylebone is a friendly and dynamic neighbourhood in the heart of Marylebone, curated by The Portman Estate.

110 acres of curated elegant streets and squares with a vibrant retail and lifestyle offering, it is best known as an independent shopping haven and a foodie's paradise, rich in custom throughout the working week and weekend. Marylebone sits just behind Oxford Street, the capital's main retail thoroughfare home to renowned flagship stores. It is a thriving residential neighbourhood, a location of choice for headquarter offices and boasts over 30 hotels. The area is home to curated independent boutiques, unique dining experiences, progressive wellness studios, iconic cultural institutions, luscious green spaces and now a new pedestrianised public courtyard, Loxton Walk.

PORTMAN
MARYLEBONE



Discover our directory here portmanmarylebone.com

Explore the neighbourhood

FASHION & ACCESSORIES

- 01 Grey Flannel
- 02 Kimai
- 03 MONC
- 04 Mouki Mou
- 05 Sunspel
- 06 Theory
- 07 Trunk
- 08 Selfridges

LEISURE

- 01 1Rebel
- 02 BXR
- 03 Fitness First
- 04 Home Grown
- 05 Home House
- 06 Nobu Pilates
- 07 Seymour Leisure Centre
- 08 Third Space
- 09 Total Chi Yoga & Pilates

FOOD & BEVERAGE

- 01 Avobar
- 02 Bellazul
- 03 Boxcar Baker & Deli
- 04 Cafe Murano
- 05 Carpenter's Arms
- 06 Defune
- 07 Florencia
- 08 Fratelli Greci
- 09 Jikoni
- 10 KOL
- 11 Lina Stores
- 12 Lurra
- 13 Marks and Spencer
- 14 Royal China
- 15 Sainsbury's
- 16 Santo Mare
- 17 Seymour Kitchen
- 18 So French
- 19 Tesco
- 20 The Grazing Goat
- 21 The Portman Pub
- 22 Trishna
- 23 Zoilo
- 24 The Hart

WELLBEING & LIFESTYLE

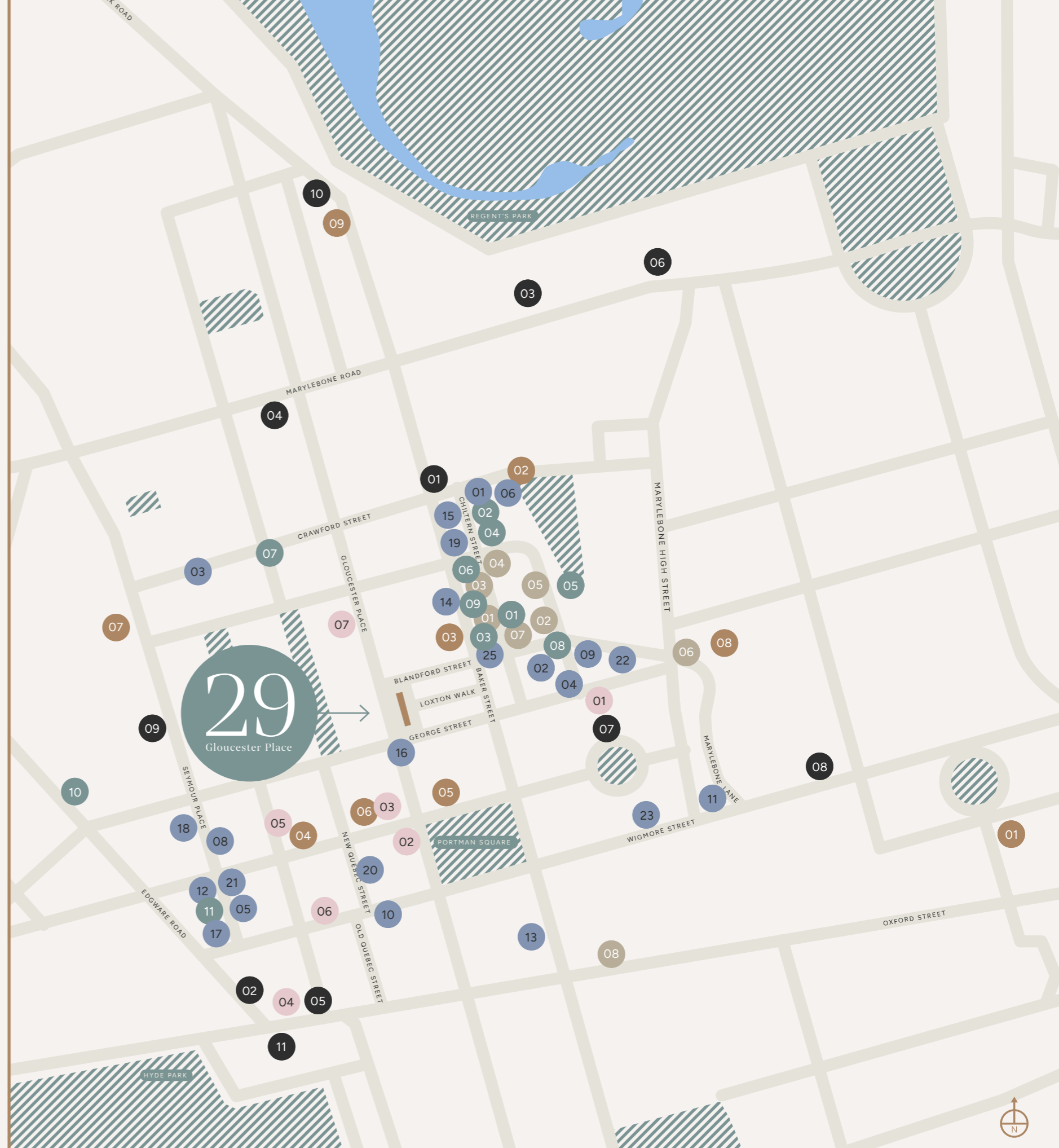
- 01 anatomē
- 02 Anna + Nina
- 03 Grandirosa
- 04 Labour and Wait
- 05 Monocle
- 06 Niwaki
- 07 Perfumer H
- 08 Shreeji News
- 09 Tracksmith
- 10 Townhouse Nails
- 11 Veranda Books

CULTURE

- 01 Everyman Cinema
- 02 Frameless
- 03 Madame Tussaud's
- 04 Marylebone Town Hall
- 05 Moco Museum
- 06 Royal Academy of Music
- 07 The Wallace Collection
- 08 Wigmore Hall
- 09 Sylvia Young Theatre School
- 10 Marylebone Theatre
- 11 Marble Arch

HOTELS

- 01 Durrant's Hotel
- 02 Hyatt Regency London - The Churchill
- 03 Nobu Hotel London Portman Square
- 04 The Cumberland Hotel
- 05 The Prince Akatoki
- 06 The Zetter Marylebone
- 07 Z at Gloucester Place



The Walk of the Town

Loxton Walk is a new destination in Marylebone providing 27,200 sq ft of flexible retail and restaurant space across 16 units, due to open in early 2026.

Four new avenues from George Street, Blandford Street, Gloucester Place and Baker Street will lead visitors into Loxton Walk, an open-air retail courtyard, designed to be a lively communal amenity for residents, office workers and public visitors. Recently announced to be joining the space are Melrose & Morgan, Matchado and Notto.



Well connected

In Marylebone you're never far from a station, connecting you to the rest of London and further afield with Eurostar only 30 minutes away.



THE ITALIAN GREYHOUND

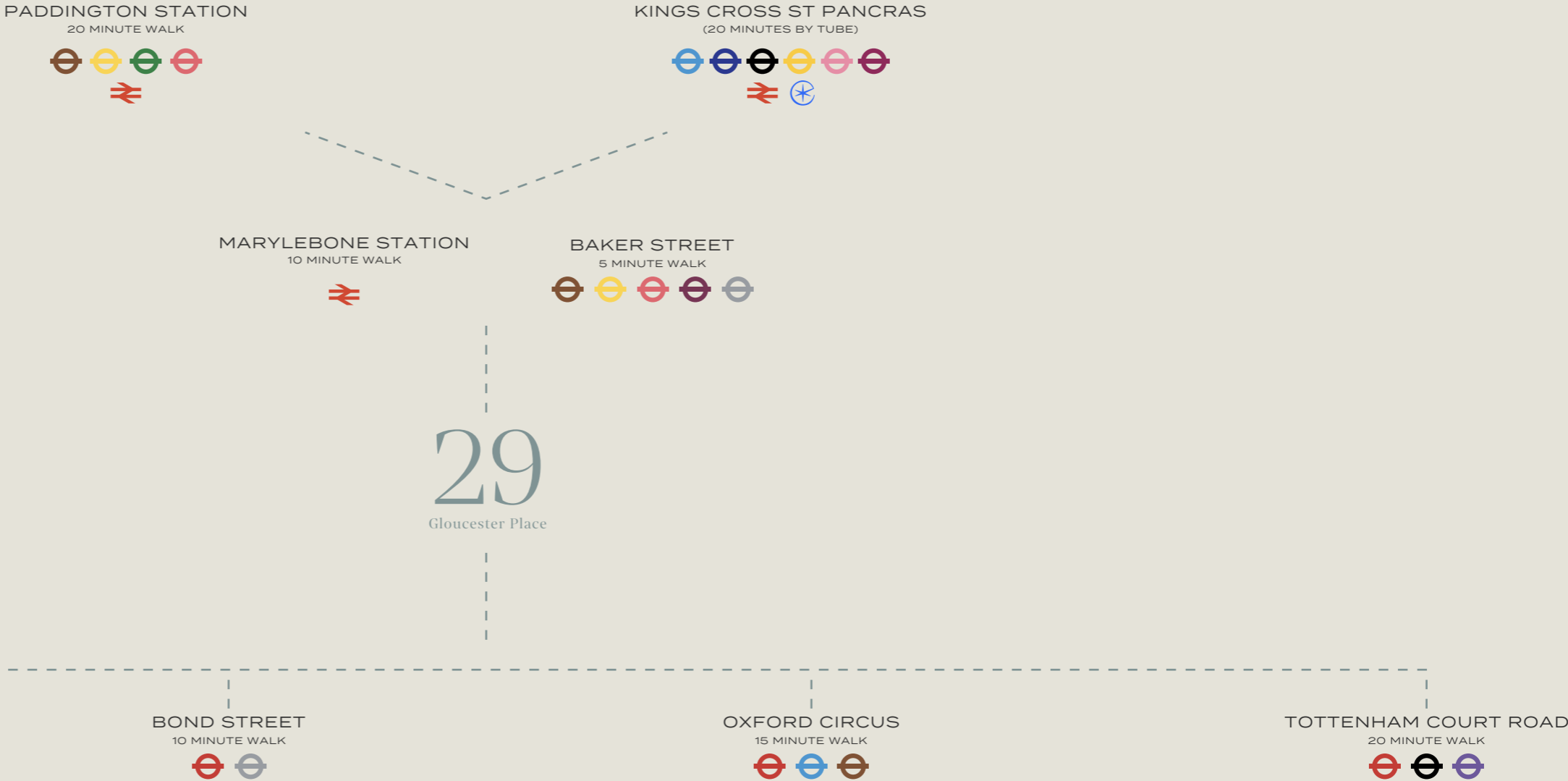


THE GALLERY OF EVERYTHING



KOL

-  CIRCLE
-  DISTRICT
-  BAKERLOO
-  HAMMERSMITH AND CITY
-  VICTORIA
-  PICCADILLY
-  NORTHERN
-  METROPOLITAN
-  JUBILEE
-  CENTRAL
-  ELIZABETH
-  NATIONAL RAIL
-  EUROSTAR





Access to members' clubspace, The Orchard

Available to all commercial customers of The Portman Estate, The Orchard is our business led clubspace at One Great Cumberland Place.

Operated by innovative workspace provider, x+why, The Orchard is an excellent amenity for businesses both in the building and local area to meet, work and collaborate.

Portman WorkWell customers are eligible to receive a discounted rate for membership which includes:

Bookable meeting rooms and conference facilities

Co-working facilities

Exclusive restaurant with terrace

Find out more
www.xandwhy.co.uk/clubspace/the-orchard



The Team

ABOUT THE PORTMAN ESTATE

Committed to the long-term success of Marylebone, The Portman Estate is a forward-thinking property business that became the first London estate to achieve B Corp™ certification in 2022, joining the global movement of trailblazing businesses who meet the highest standards of corporate social responsibility.

Spanning 110 acres, it includes frontages on Oxford Street, Baker Street and Edgware Road, and is home to 200 shops, restaurants, hotels and services. The Estate's impressive and diverse neighbourhood of independent brands, Portman Marylebone, currently includes the likes of Moco Musuem London, KOL, Anna + Nina, Cafe Murano Marylebone, Avobar, AngloThai, Sabre Paris, Jacques Marie Mage and Veranda Books.

To find out more visit www.portmanestate.co.uk

THE AGENTS

RX
LONDON

CATHERINE LLOYD

catherine.lloyd@rx.london
07795 445 833

IMOGEN PURVIS

imogen.purvis@rx.london
07377 978 348

JACK ROSE

jack.rose@rx.london
07590 814753

Colliers

JOSEPH MISHON

joseph.mishon@colliers.com
07876 724 488

TASH ATKINSON

tash.atkinson@colliers.com
07936 338 767

TOM TREGONING

tom.tregoning@colliers.com
07765 258 526



Whilst every effort has been made to ensure accuracy, no responsibility is taken for any error, omission or mis-statement in these particulars which do not constitute an offer or contract. No representation or warranty whatever is made or given either during negotiations or in particular by the vendor, lessors or agents Colliers and RX London. The agents have not tested the services. All floor areas are approximate. Information correct at time of publishing: October 2025.



PortmanWorkWell.co.uk

