

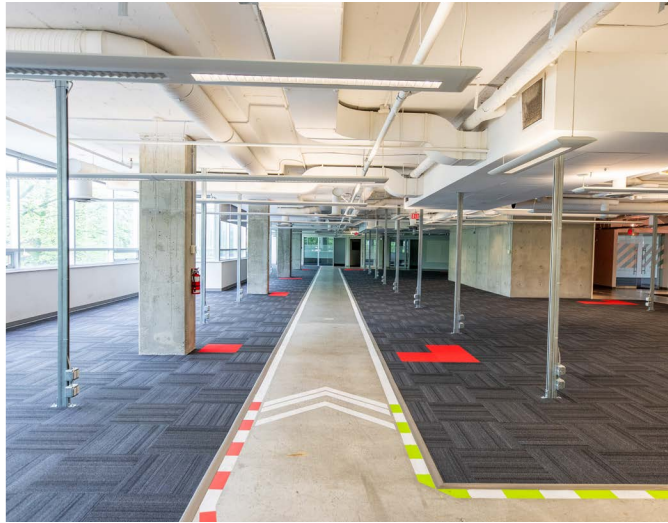


The Bayview - 1555 W Pender Street, Vancouver BC

Up to 19,783 SF of Improved Office Space with Streetfront Exposure

**HT
FG** THE HIGH
TECHNOLOGY
FACILITIES GROUP

CBRE



Details



Available Area:

Unit 100	4,615 SF
Unit 200 (mezz)	1,619 SF
Unit 300	<u>13,549 SF</u>
Total	19,783 SF

Net Rent:

Contact listing agents

Additional Rent:

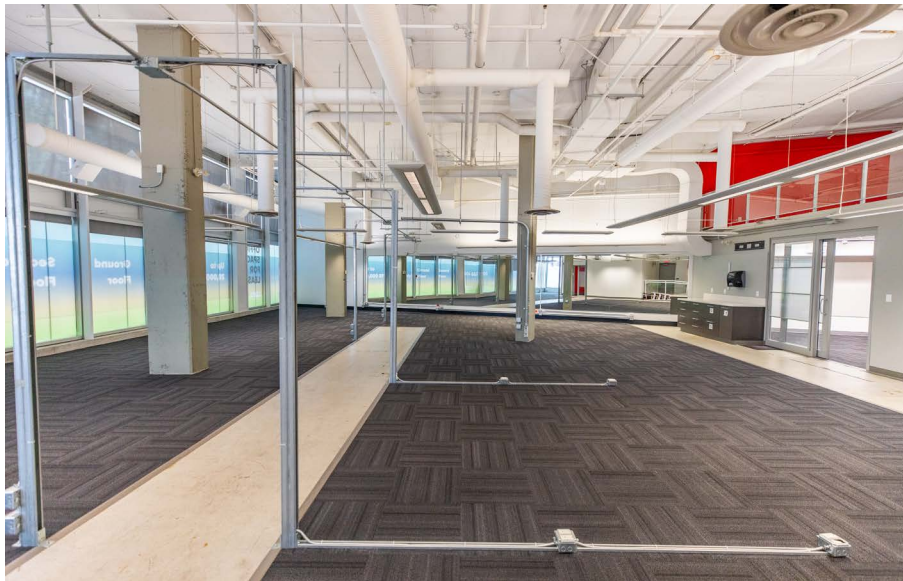
\$21.17 PSF (2025 Est.)

Available:

Immediately

TI Allowance:

Contact listing agents



Features



Improved High Quality Tech Space



Building Parking



Private In Suite Washrooms



Located in the Desirable Coal Harbour Neighbourhood



Potential Building Signage



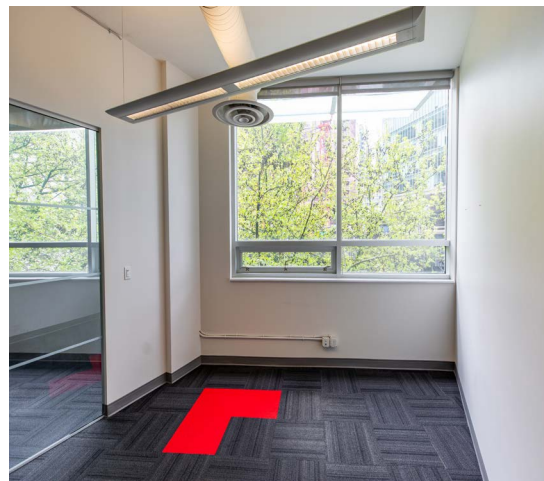
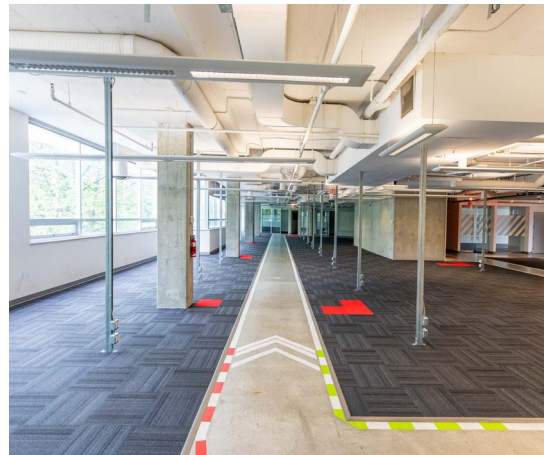
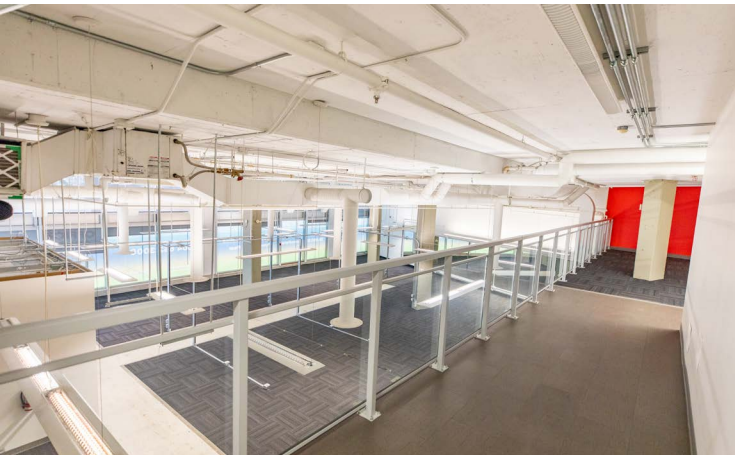
Large Server Room



Access to Rooftop Patio

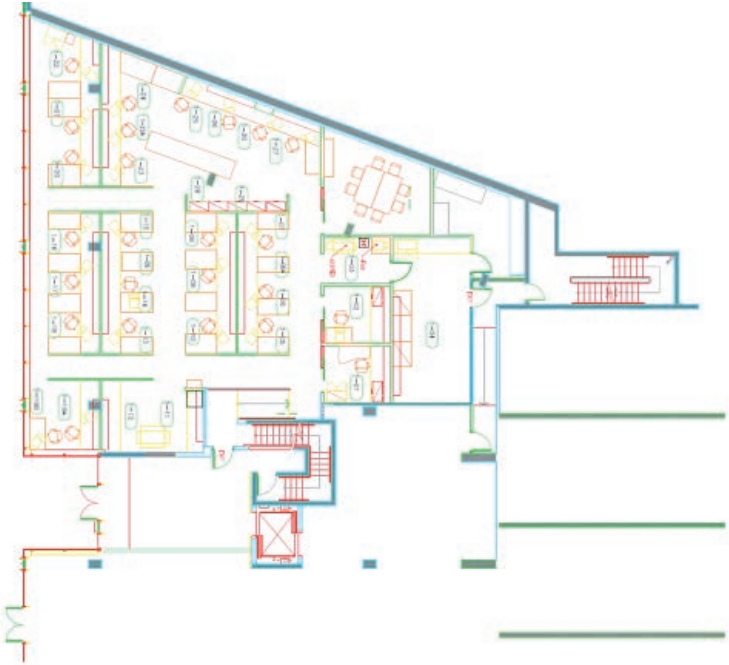


Direct Ground Floor Entrance

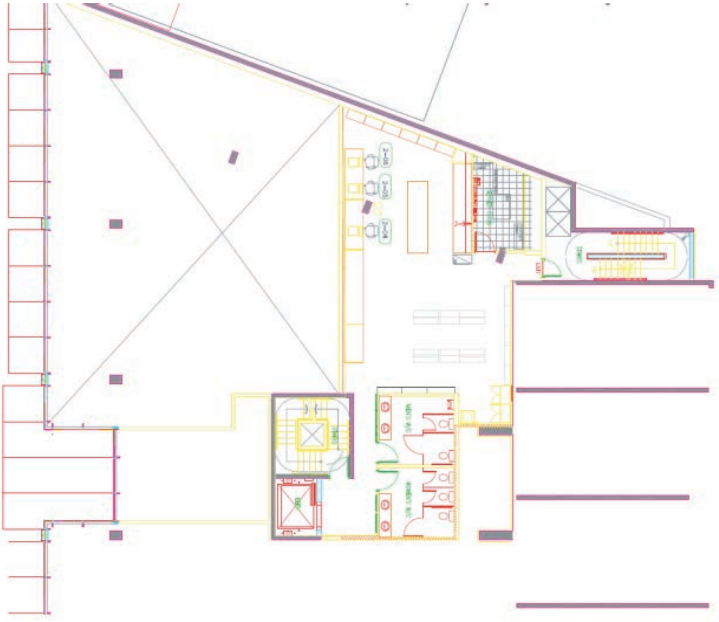


Floorplans

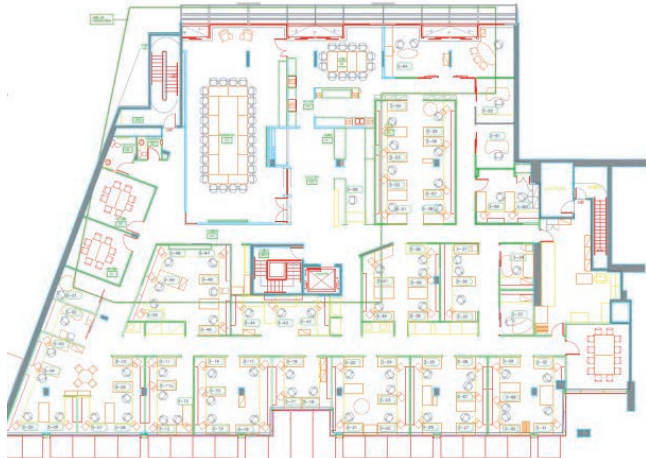
Unit 100 | 4,615 SF



Unit 200 (mezz) | 1,619 SF



Unit 300 | 13,549 SF

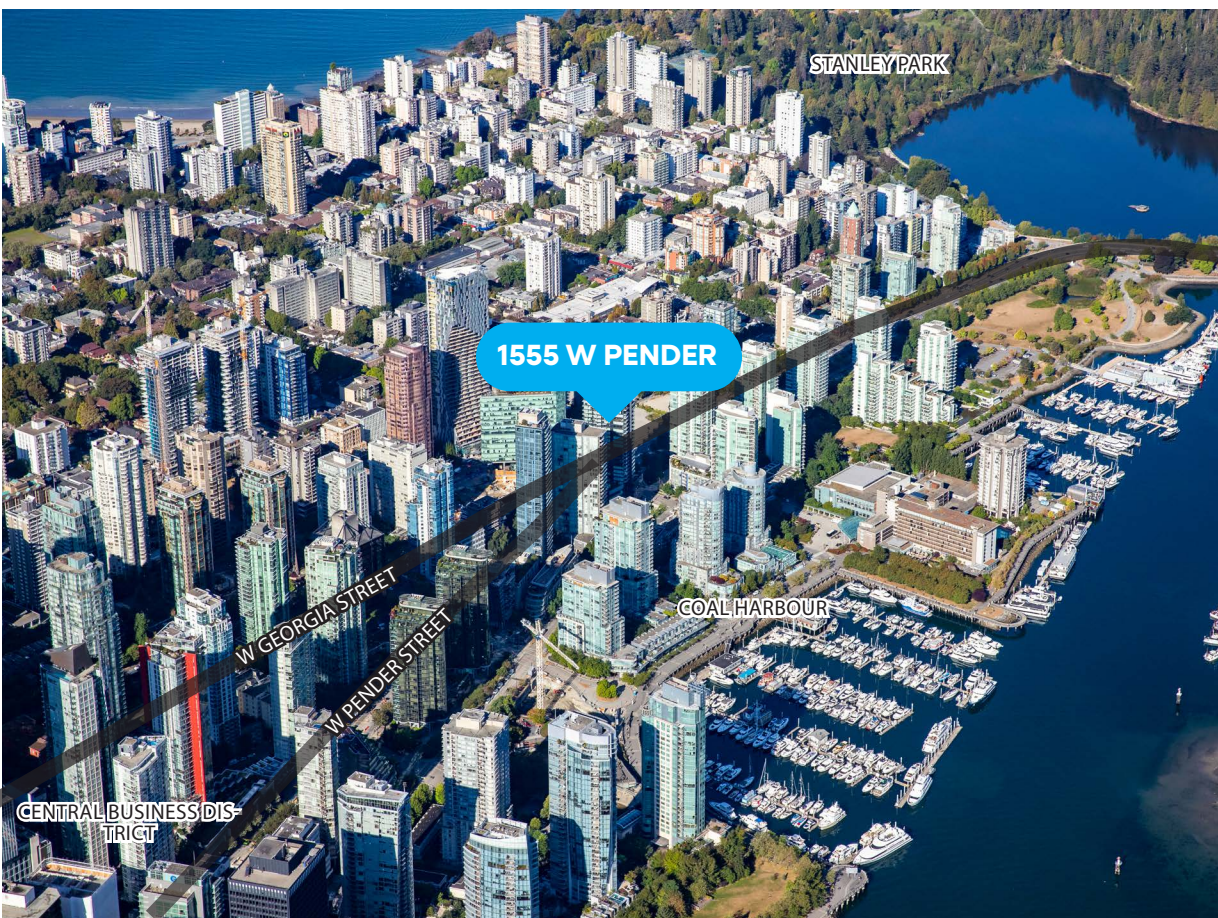


Location

1555 West Pender Street is a premier downtown office location, strategically positioned just minutes from Coal Harbour and the Central Business District. This site boasts exceptional accessibility, with Burrard SkyTrain station and multiple major bus routes in close proximity, ensuring seamless transit for employees and clients alike.

The surrounding neighborhood is vibrant and dynamic, featuring a diverse array of renowned restaurants, cafes, and shops. Notable dining establishments include Cardero's Restaurant and Lift Bar Grill View, while coffee aficionados will appreciate local favourites like Harbour Cafe, Cafe Villaggio, Breaking Bean, and T & Co.

The area is rich in fitness and retail services, including state-of-the-art gyms and wellness studios, catering to the health-conscious professional. With its prime location and abundant amenities, 1555 West Pender Street represents an exceptional workspace for businesses seeking to thrive in a bustling urban environment.



NEARBY AMENITIES

1 KM RADIUS



228

Restaurants
& Cafes



20

Fitness



290

Retail &
Services

WALK SCORE



96

Walker's
Paradise



95

Rider's
Paradise



81

Very
Bikeable

DRIVE TIME

20-Min drive to North Vancouver

20-Min drive to Mount Pleasant

30-Min drive to Burnaby

30-Min drive to YVR Airport

TRANSIT

1-Min walk to Bus 019, 240, 241, 246, 247, 250, 253, 254, N24

12-Min walk to Burrard SkyTrain Station (Expo Line)

BIKE

Dedicated bike path along W Pender, Alberni, Cardero, and Nicola Streets

Contact us for more information

Blair Quinn

Personal Real Estate Corporation
Vice Chairman
CBRE Limited, The HTFG
blair.quinn@cbre.com
604-662-5161

Andre Alie Day

Personal Real Estate Corporation
Senior Associate
CBRE Limited, The HTFG
andre.alieday@cbre.com
604-662-5137



Professionally owned and managed by QuadReal



THE HIGH
TECHNOLOGY
FACILITIES GROUP

CBRE

Marketed by The High Technology Facilities Group
at CBRE

CBRE Limited | 1021 West Hastings Street, Suite 2500 | Vancouver, BC V6E 0C3
www.cbre.ca

This disclaimer shall apply to CBRE Limited, Real Estate Brokerage, and to all other divisions of the Corporation; to include all employees and independent contractors ("CBRE"). All references to CBRE Limited herein shall be deemed to include CBRE, Inc. The information set out herein, including, without limitation, any projections, images, opinions, assumptions and estimates obtained from third parties (the "Information") has not been verified by CBRE, and CBRE does not represent, warrant or guarantee the accuracy, correctness and completeness of the Information. CBRE does not accept or assume any responsibility or liability, direct or consequential, for the Information or the recipient's reliance upon the Information. The recipient of the Information should take such steps as the recipient may deem necessary to verify the Information prior to placing any reliance upon the Information. The Information may change and any property described in the Information may be withdrawn from the market at any time without notice or obligation to the recipient from CBRE. CBRE and the CBRE logo are the service marks of CBRE Limited and/or its affiliated or related companies in other countries. All other marks displayed on this document are the property of their respective owners. All Rights Reserved.

Mapping Sources: Canadian Mapping Services canadamapping@cbre.com; DMTI Spatial, Environics Analytics, Microsoft Bing, Google Earth.