

For Lease

West Park Mall Quesnel, BC

LOCATION

155 Malcolm Drive
Quesnel, BC
V2J 3K2, Canada

LEASING CONTACTS

ALYCIA KAMER
Senior Director
604 558 8665
akamer@bosaproperties.com

CALLY ZERING
Leasing Manager
778 357 0175
czering@bosaproperties.com



**bosa
properties**

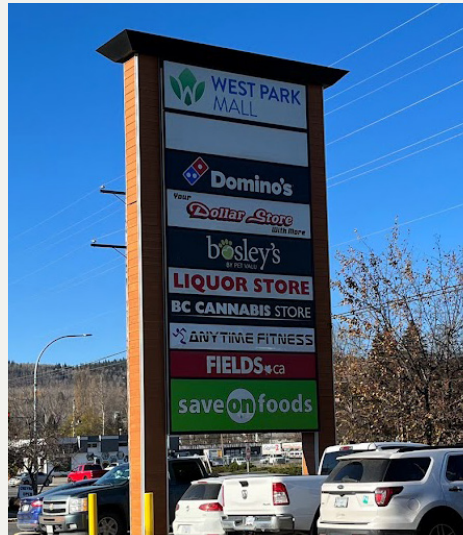
OVERVIEW

West Park Mall is a 110,000-square foot shopping centre in the heart of Quesnel, B.C. In 2017, the shopping centre underwent a complete renovation, including updated exterior facades and store fronts, as well as update common areas.



LOCATION

West Park Mall is located in the heart of Quesnel, B.C., a bustling city with a population of over 10,000, and at the confluence of the Fraser and Quesnel rivers. Located at the intersection of Marsh Drive and Malcolm Drive, the shopping centre features easy accessibility as well as ample on-site parking.



GROSS LEASABLE AREA

108,195 sq. ft.

YEAR BUILT

1973 (ren. 2017)

NUMBER OF UNITS

23

NUMBER OF BUSINESSES

20

ANCHOR TENANTS

- Save-on-Foods
- Fields
- Westside Liquor Store
- Anytime Fitness
- Your Dollar Store with More

OTHER OFFERINGS

- Bosley's
- Warehouse One Clothing Co.
- Lensmasters
- West Park Dental
- Alterations Unlimited
- Domino's Pizza

West Park Mall

● Leased ● Available



AVAILABLE UNITS

| UNIT | SF | AVAILABILITY |
|-------|-------|-------------------------------|
| 2a | 523 | Immediately |
| 3 | 1,493 | Immediately |
| 6 | 2,840 | Immediately |
| 21 | 2,181 | Immediately |
| Kiosk | 100 | Multiple locations. \$60/day. |

NET RENTAL RATE

Negotiable

OPERATING EXPENSES

Approximately \$10.67/sf
(2026 estimate)

ALLOWANCE

Negotiable

CONTACT

Get in Touch

HEAD OFFICE

Bosa Properties
1201-838 West Hastings St
Vancouver, BC V6C 0A6

Office 604 416 0286

→ bosaproperties.com

LEASING CONTACT

ALYCIA KAMER
Senior Director
604 558 8665
akamer@bosaproperties.com

CALLY ZERING
Leasing Manager
778 357 0175
czering@bosaproperties.com

