

PELICAN BAYS

4960-5000 SW 52ND STREET, DAVIE, FL 33314

4970 SW 52ND ST BLDG 3 #311



SPACE HIGHLIGHTS

- 2,160 SF
- One front 12' x 12' grade level overhead door
- One rear 10' x 12' grade level overhead door
- Small bay warehouse
- +/- 125 SF office
- 3 phase power
- 15' clear ceiling
- Two private restrooms
- Storage closet
- CAM includes water and trash



MATT JONES

Senior Vice President
Direct: 954.921.6673 | Cell: 954.682.6288
matt@levyrai.com



PELICAN BAYS

4960-5000 SW 52ND STREET, DAVIE, FL 33314

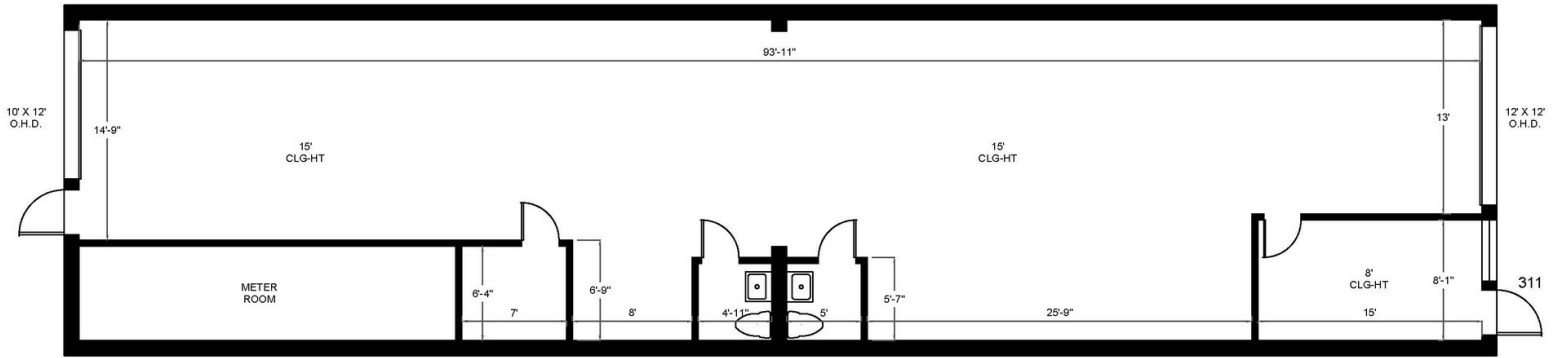
4970 SW 52ND ST BLDG 3 #311 FLOOR PLAN

PELICAN BAYS

4990 NW 52ND STREET | DAVIE, FL 33314



BLDG 3, SUITE 311



2,160 Rentable Sq. Ft.
www.LevyRealtyAdvisors.com

MATT JONES

Senior Vice President
 Direct: 954.921.6673 | Cell: 954.682.6288
 matt@levyrai.com

