



## 6-8 The Headrow

Leeds, LS1 6PT

### **TO LET - PROMINENTLY LOCATED OFFICES**

**1,137 to 5,205 sq ft**  
(105.63 to 483.56 sq m)

- PROMINENT HEADROW LOCATION
- RECENTLY REFURBISHED
- LED LIGHTING
- CHARACTER FEATURES

# 6-8 The Headrow, Leeds, LS1 6PT

## Summary

<b>Available Size</b>	1,137 to 5,205 sq ft
<b>Rent</b>	£14 per sq ft
<b>Business Rates</b>	Please contact local authorities for information on rating.
<b>Estate Charge</b>	N/A
<b>EPC Rating</b>	Upon enquiry

## Location

Located in the heart of the city centre Leeds' retail and leisure hub, 6-8 The Headrow is minutes away from Leeds' mainline train station and bus station, benefitting from fantastic transport links. The property is strategically located with a plethora of local shops, restaurants and bars within easy walking distance of the property. Local occupiers include the likes of: Argos, TK Maxx and Flannels.

## Description

6-8 The Headrow is an attractive and prominent five storey office building providing office accommodation across four floors. Internally, the available suites benefit from the following specification features:

- LED Lighting
- W/C Facilities
- Gas fired central heating
- Suspended ceilings
- Passenger lift serving all floors
- Carpeted and decorated throughout

## Accommodation

The accommodation comprises the following net internal floor areas:

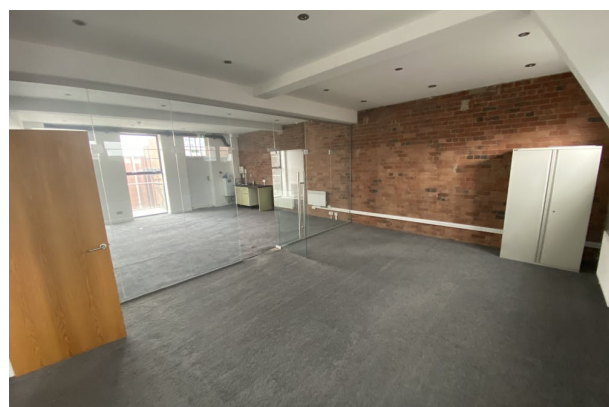
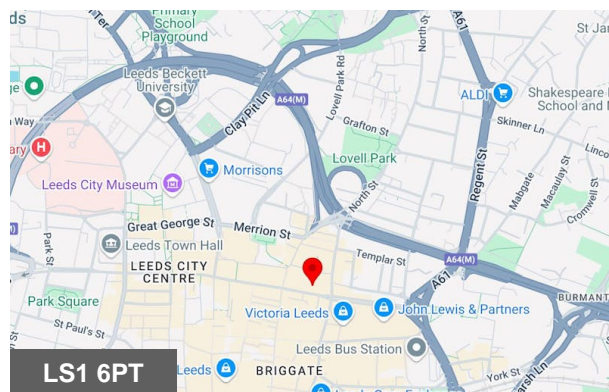
Name	sq ft	sq m	Availability
4th	1,137	105.63	Available
3rd	1,356	125.98	Available
2nd	1,356	125.98	Available
1st	1,356	125.98	Available
<b>Total</b>	<b>5,205</b>	<b>483.57</b>	

## Viewings

To arrange a viewing, please contact the sole letting agent.

## Terms

The suites are available by way of a new effective full repairing and insuring lease for a term to be negotiated and agreed. The quoting commencing rental for the suites are to be made available to interested parties upon request.



## Viewing & Further Information



**Tom Newstead**

07538680333

tomnewstead@cartertowler.co.uk



**James Jackson**

07920 812275

jamesjackson@cartertowler.co.uk



**Clem McDowell**

07432 013246

clemmcdowell@cartertowler.co.uk