

Stony Pointe

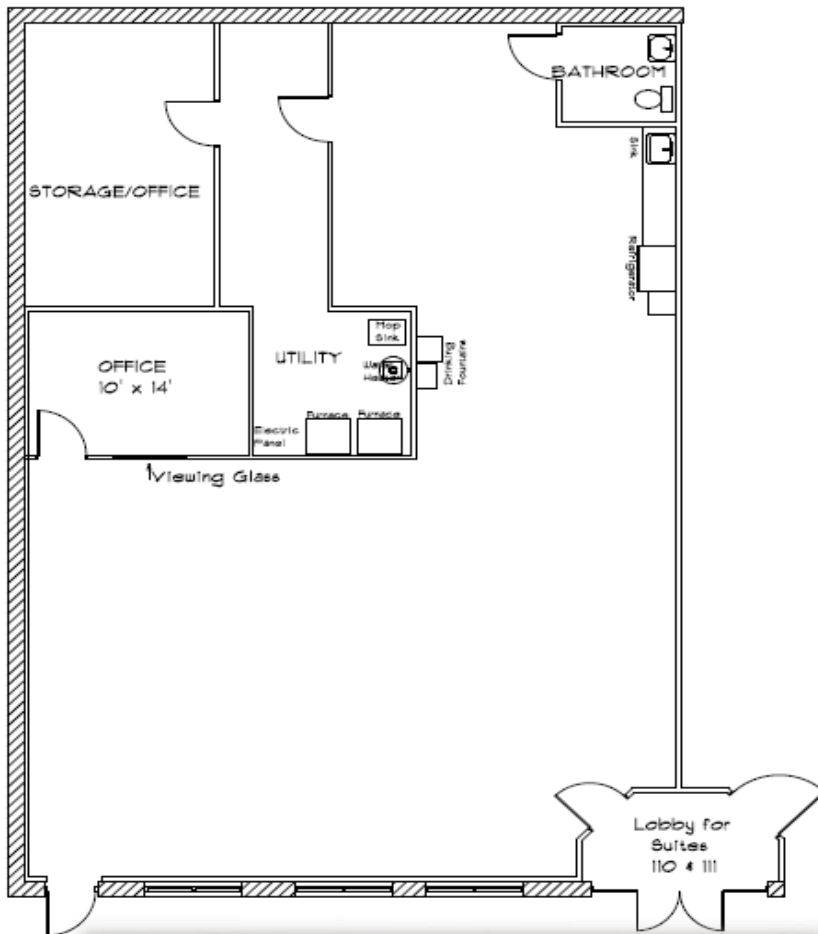


105 Stony Pointe Way
Strasburg, Virginia 22657



SUITE #110: 2,400sf

Large Open Room, 1 Office with Viewing Window, 1 Office with Storage Area
Break area with Cabinets, Sink & Refrigerator
Restroom



Premier Class A Construction
Building Size – 28,800 sf
Features: Office, Medical,
Retail & Service Tenants
Full ADA Accessibility
Ample Parking
High Traffic Location

BASE RENT \$8.50sf -	\$1,700.00
CAM	\$ 486.24
MONTHLY	\$ 2,186.24

Tenant CAM Includes:
Grounds Maintenance
Snow Removal
Dumpster Services
Exterior Lighting & Maintenance
Real Estate Tax

Landlord provides:
Building Insurance

Tenant responsible for:
Suite Utilities & HVAC

Toothman

INVESTMENTS LLC

Post Office Box 145
Woodstock, Virginia 22664
540.459.4099
info@alantoothman.com