
NEW MIXED-USE DEVELOPMENT

200 Old Tappan Road Old Tappan, NJ



200 Old Tappan Road Old Tappan, NJ

- New mixed-use development in the heart of Northern Bergen County
- Located at a signalized intersection
- 22,016 SF of retail available, divisible
- Two end-cap units with drive-thru
- 99 Luxury townhomes & 130 luxury apartments under construction
- Ample on-site parking
- Minutes from New York border and the Palisades Parkway
- Traffic count: 12,564 along Old Tappan Road
- Walking distance from Northern Valley Regional High School, Charles DeWolf Middle School & Demarest Elementary School
- Neighbors: CVS, Starbucks, Dairy Queen, John Anthony Salon, MOOYAH Burgers, Butterworth's Bagels, Bank of America, Kearny Bank, Aurora Restaurant, Bosfa Italian Restaurant, Old Tappan KinderCare and Stokes Farm

Population

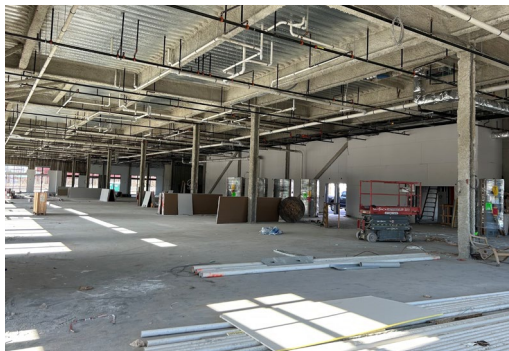
1 mile	6,034
3 miles	60,880
5 miles	164,041

Average Household Income

1 mile	\$219,922
3 miles	\$184,340
5 miles	\$182,462



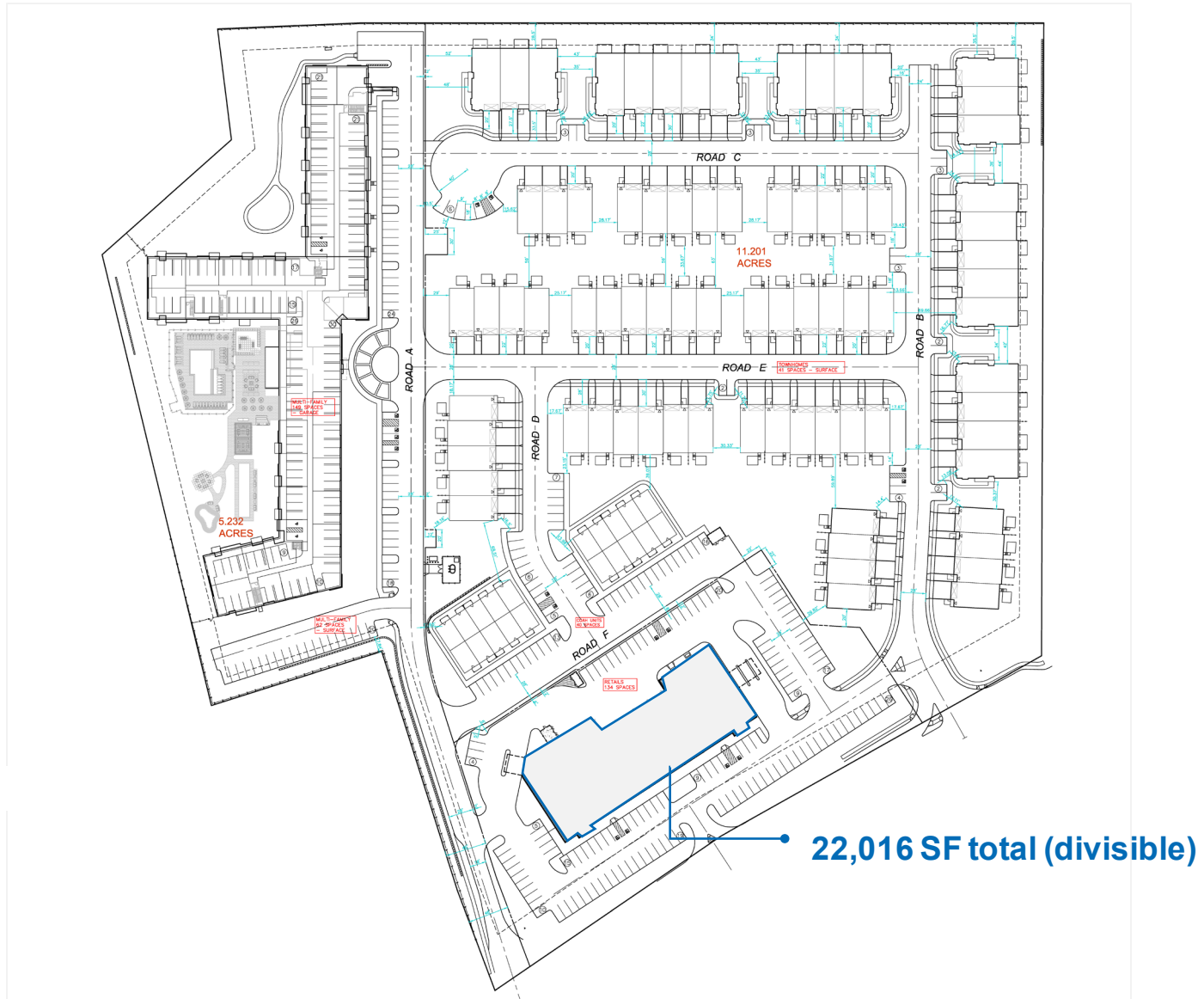
Images



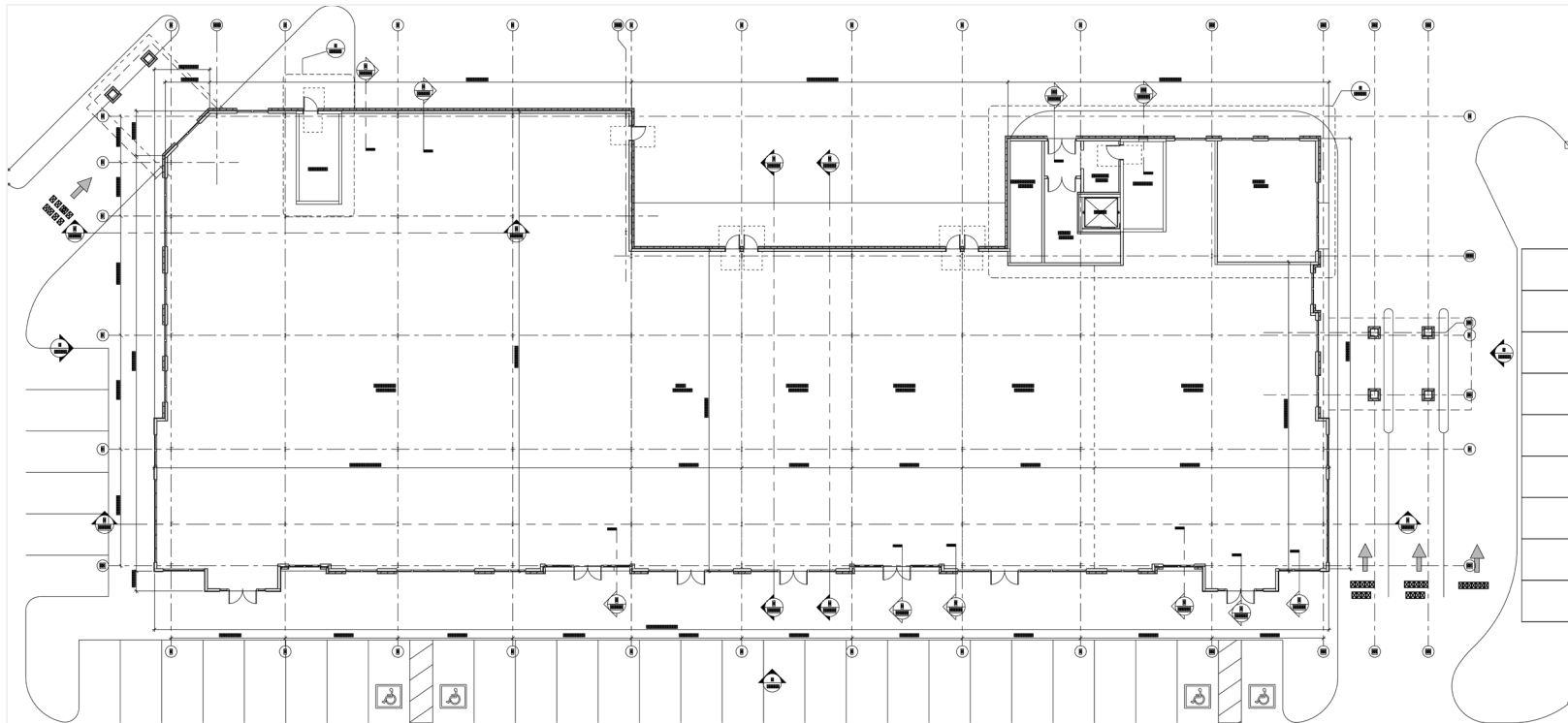
Retail Area



Retail Area



Floor Plan



CONTACT

Dean Tselepis

t 201-460-5156

dean.tselepis@nmrk.com

nmrk.com

Joe Brendel

t 201-636-8575

joe.brendel@nmrk.com