

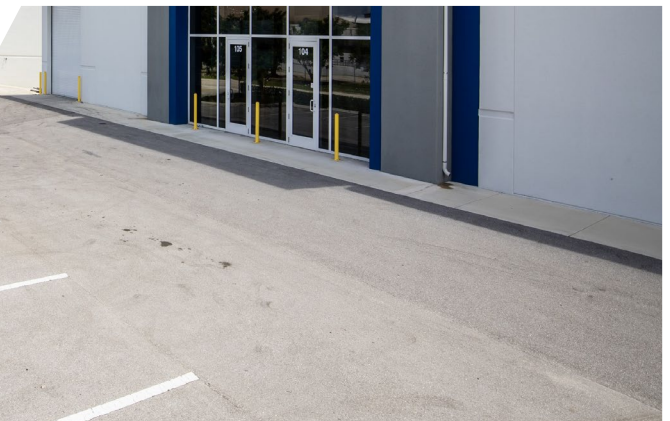


2,123 SF FOR LEASE

5900

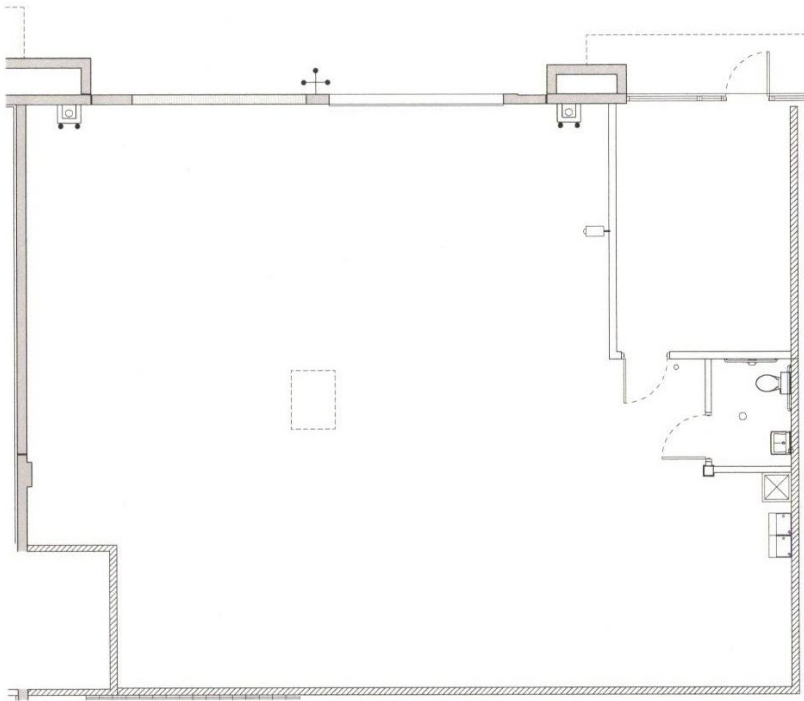
# Powerline Road

Fort Lauderdale, FL  
33309





## SITE PLAN



## FEATURES

- $\pm 2,123$  total SF of air-conditioned space
- 12x17 office
- 24' clear ceiling height
- 1 drive-in 12x14 overhead door
- Available Immediately
- \$26.00 PSF MG



## CONTACT

Matthew G. McAllister  
+1 561 901 5216

[Matthew.mcallister@cushwake.com](mailto:Matthew.mcallister@cushwake.com)



©2024 Cushman & Wakefield. All rights reserved. The information contained in this communication is strictly confidential. This information has been obtained from sources believed to be reliable but has not been verified. NO WARRANTY OR REPRESENTATION, EXPRESS OR IMPLIED, IS MADE AS TO THE CONDITION OF THE PROPERTY (OR PROPERTIES) REFERENCED HEREIN OR AS TO THE ACCURACY OR COMPLETENESS OF THE INFORMATION CONTAINED HEREIN, AND SAME IS SUBMITTED SUBJECT TO ERRORS, OMISSIONS, CHANGE OF PRICE, RENTAL OR OTHER CONDITIONS, WITHDRAWAL WITHOUT NOTICE, AND TO ANY SPECIAL LISTING CONDITIONS IMPOSED BY THE PROPERTY OWNER(S). ANY PROJECTIONS, OPINIONS OR ESTIMATES ARE SUBJECT TO UNCERTAINTY AND DO NOT SIGNIFY CURRENT OR FUTURE PROPERTY PERFORMANCE.