

FOR LEASE

1668 S US Highway 421, Westville, IN



PROPERTY HIGHLIGHTS

- Building Size: 30,268 RSF on 2.90 acres
- Former cancer center with imaging center and bio-tech/lab space
- Centrally located to Valpo, LaPorte, Westville, Michigan City, and Chesteron, IN
- Directly across the street from Purdue University Northwest Westville Campus
- Conveniently located south of US-90 Indiana Toll Road
- Modern atrium lobby including tenant lounge
- Abundant surface parking and separate tenant parking - 2.44 per 1,000 RSF parking ratio
- Building and exterior monument signage available
- Flexible lease terms and generous tenant improvement allowance



Former Cancer Center
1668 S US Highway 421
Westville, IN 46391



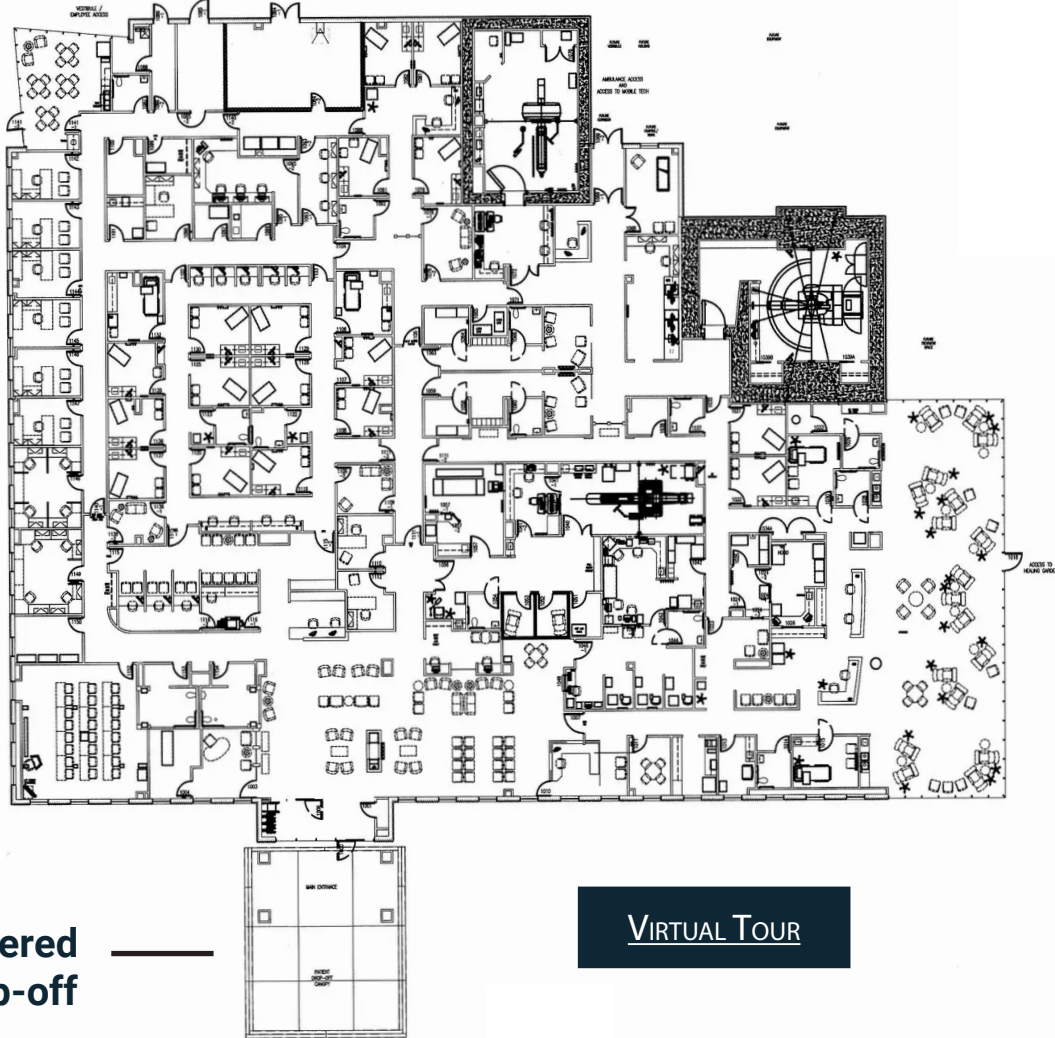
CONTACT

Jenny McAllister
Brokerage Associate
317-288-9022
JMAllister@cciin.com

R.J. Rudolph
VP, Brokerage
317-490-1026
RRudolph@cciin.com

Cornerstone Companies, Inc.
8902 N Meridian Street, Suite 205
Indianapolis, IN 46260

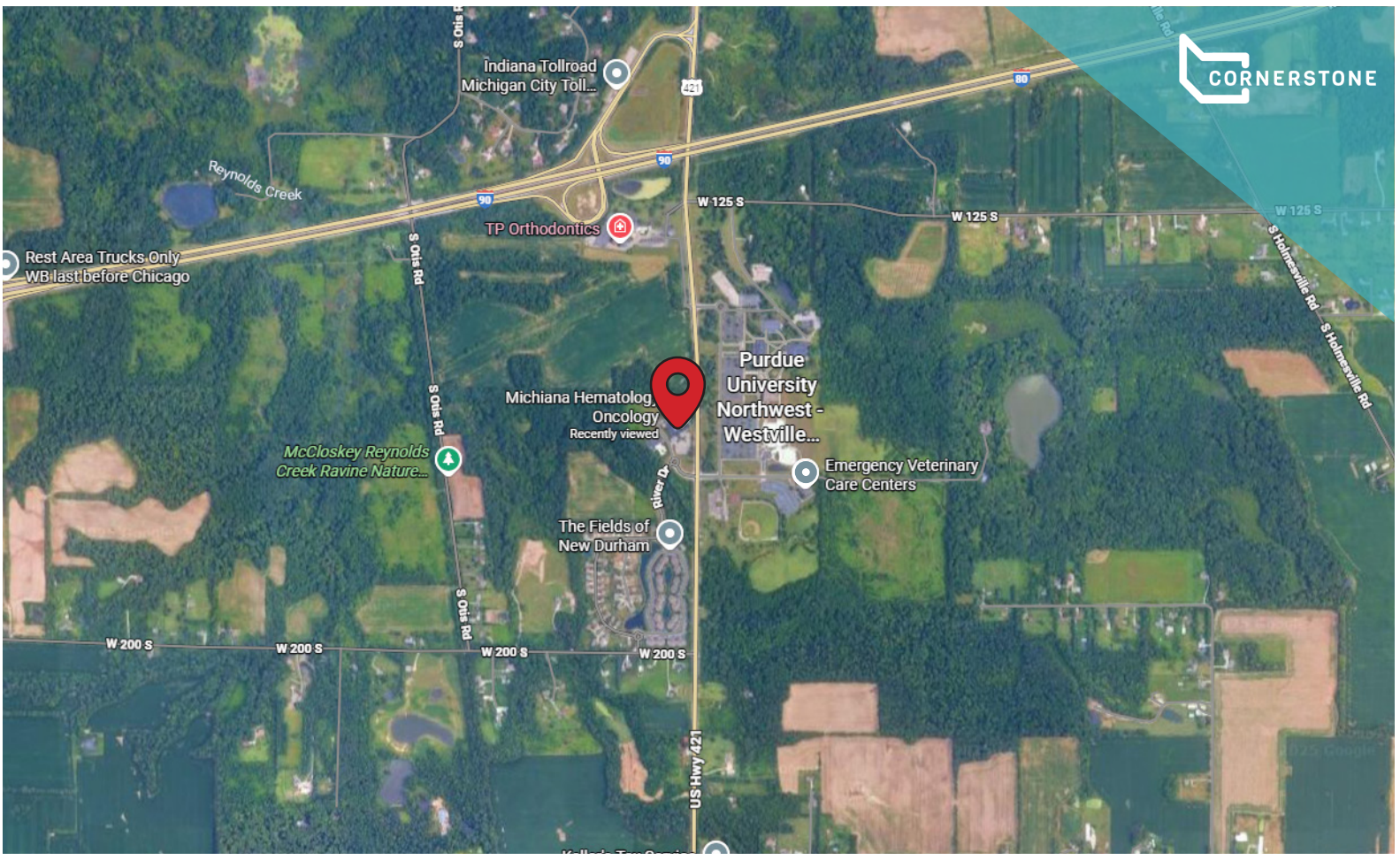
EXISTING FLOOR PLAN



Imaging Center



Main Lobby



DEMOGRAPHICS (10 - mile radius)

120,127
Population

42
Median Age

81%
Population Insured

46,607
Households

\$67,647
Median Household Income

\$87,489
Average Household Income



CONTACT

Jenny McAllister
Brokerage Associate
317-288-9022
JMAllister@cciin.com

R.J. Rudolph
VP, Brokerage
317-490-1026
RRudolph@cciin.com