

John Young Commerce Center

601, 607 & 613 Triumph Court
Orlando, FL32805
www.cbre.com/orlando

Available Now - \$13.50/SF NNN



Central Location

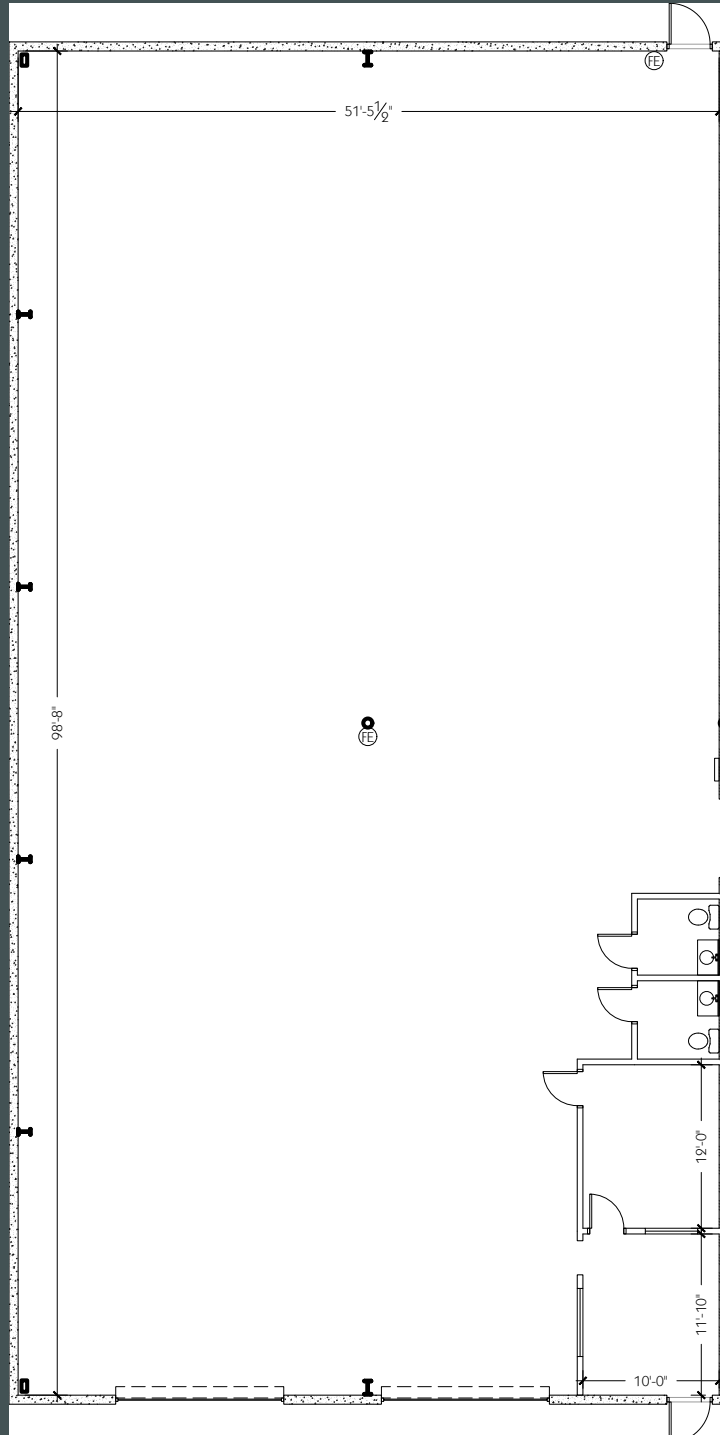
John Young Commerce Center is located 0.30 miles south of the highly trafficked signalized intersection of John Young Pkwy and S.R. 50 and 0.35 miles north of the John Young Pkwy and FL S.R. 408 exit. The site has close proximity to N. Orange Blossom Trl, Interstate-4 and the exciting and dynamic Creative Village.

Property Details

Availability	5,250± SF
Built	1988 (Block & Metal)
Improvements	<ul style="list-style-type: none"> • New Roof 2022 • Freshly repaved truck court • Additional Capital Improvements Planned in 2025
Ceiling Height	21'-24'
Bay Size/Depth	Approximately 50' x 100'
Dock High Doors	12' - 14'
Truck Court	100'
Signage	Directory & Building
Zone	C-3 Orange County

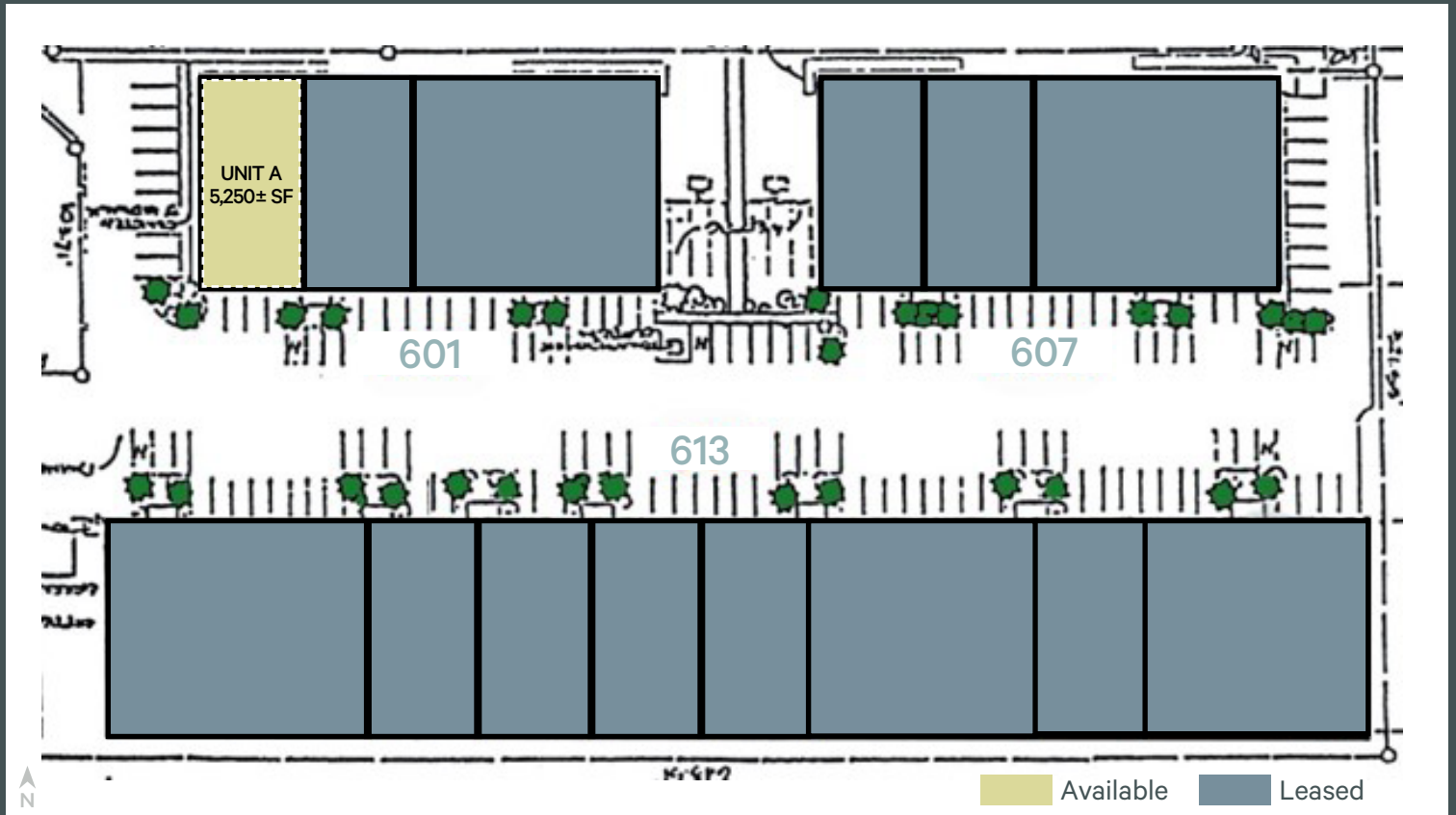
Floor Plan

Suite 601 A | 5,250± SF



Site Plan

Available 5,250± SF



For leasing information
please contact:

Todd Davis, SIOR, CCIM
+1 407 404 5107
todd.davis1@cbre.com

