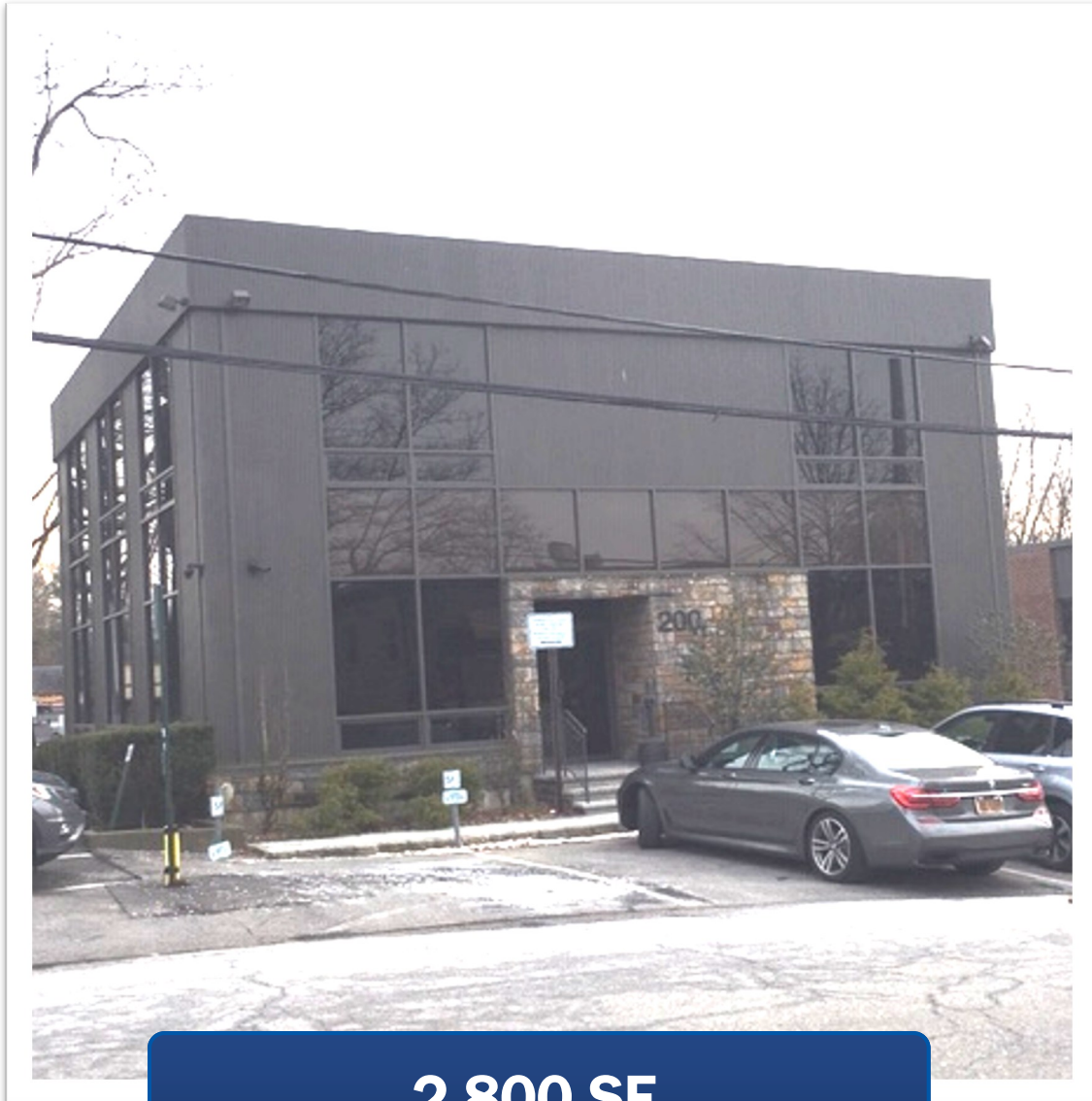


**200 Summerfield Street
Scarsdale, New York**

FOR LEASE



2,800 SF
(2,000 SF Office, 800 SF Warehouse)

Prepared by:

Tony DiCamillo
914.787-9571
nycrealtygroup@gmail.com

Scalzo Group

www.cbcworldwide.com

2500 Westchester Ave
Suite 109
Purchase, NY 10577

Executive Summary

The Offering:

Scalzo Group Commercial is pleased to offer For Lease 200 Summerfield St. Scarsdale NY, a prestigious property location located in Scarsdale, New York.

Investment Highlights:

- Beautifully Renovated Commercial Building with 2,800 SF of rentable space
- Office Space
- Warehouse Space
- **Ground Floor**
 - Kitchen
 - Conference Room, 2
 - Offices
 - Private Bathroom

Location Highlights:

- Easy Access to Route 22, Bronx River Parkway and Hutchinson River Parkway
- Short Drive to Metro North
- High Visibility and Traffic Count on Main Street
- Walk to Restaurant & Shopping

Executive Summary



The Property

200 Summerfield Street, Scarsdale, New York

Property Specifications

Property Type:	Commercial
Zoning:	Office / Warehouse
Building Size:	6,500 SF
Office Space:	AVAILABLE: 2,800 SF 2,000 SF Plus 800 SF of environmentally controlled warehouse space
Parking:	6 Onsite Spaces

Price

Lease Price: \$24.00 PSF plus utilities

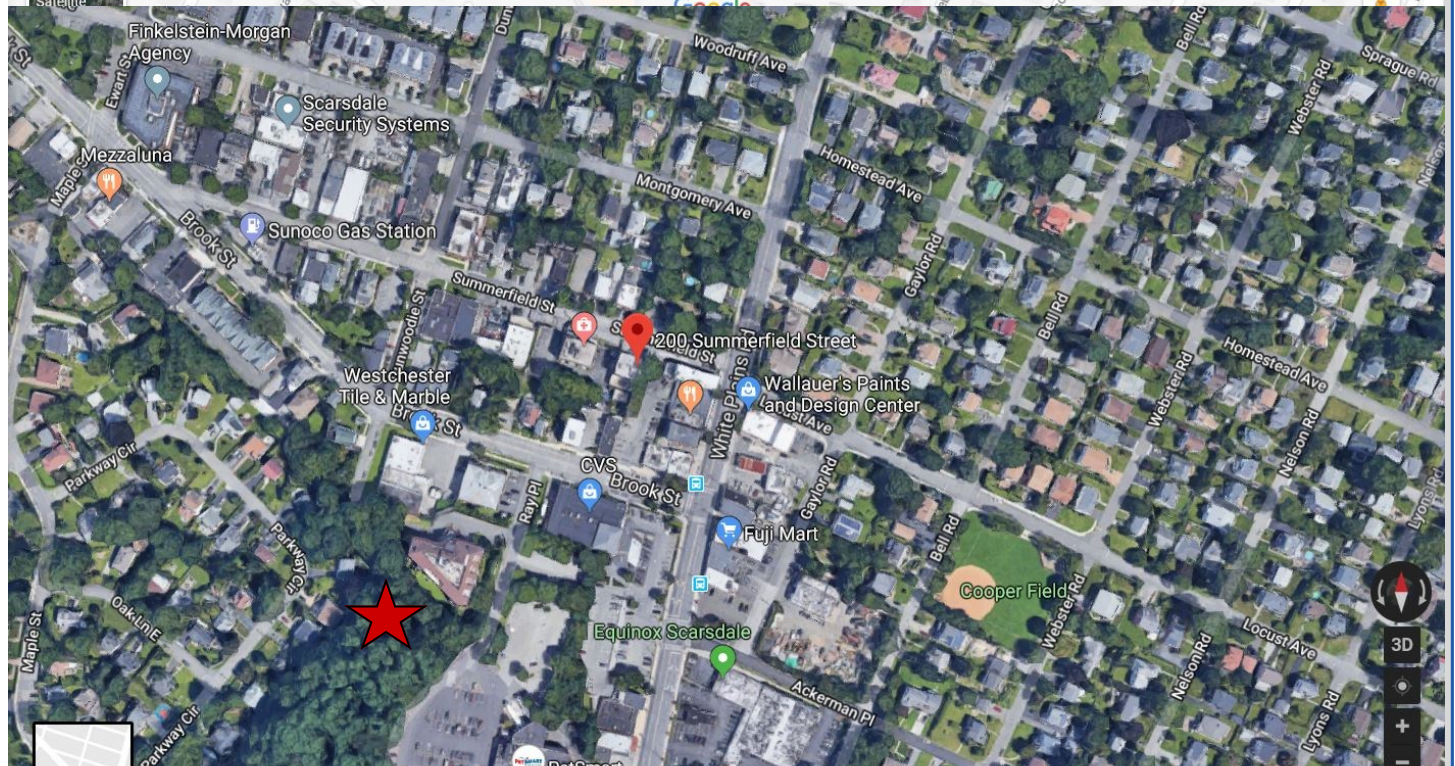
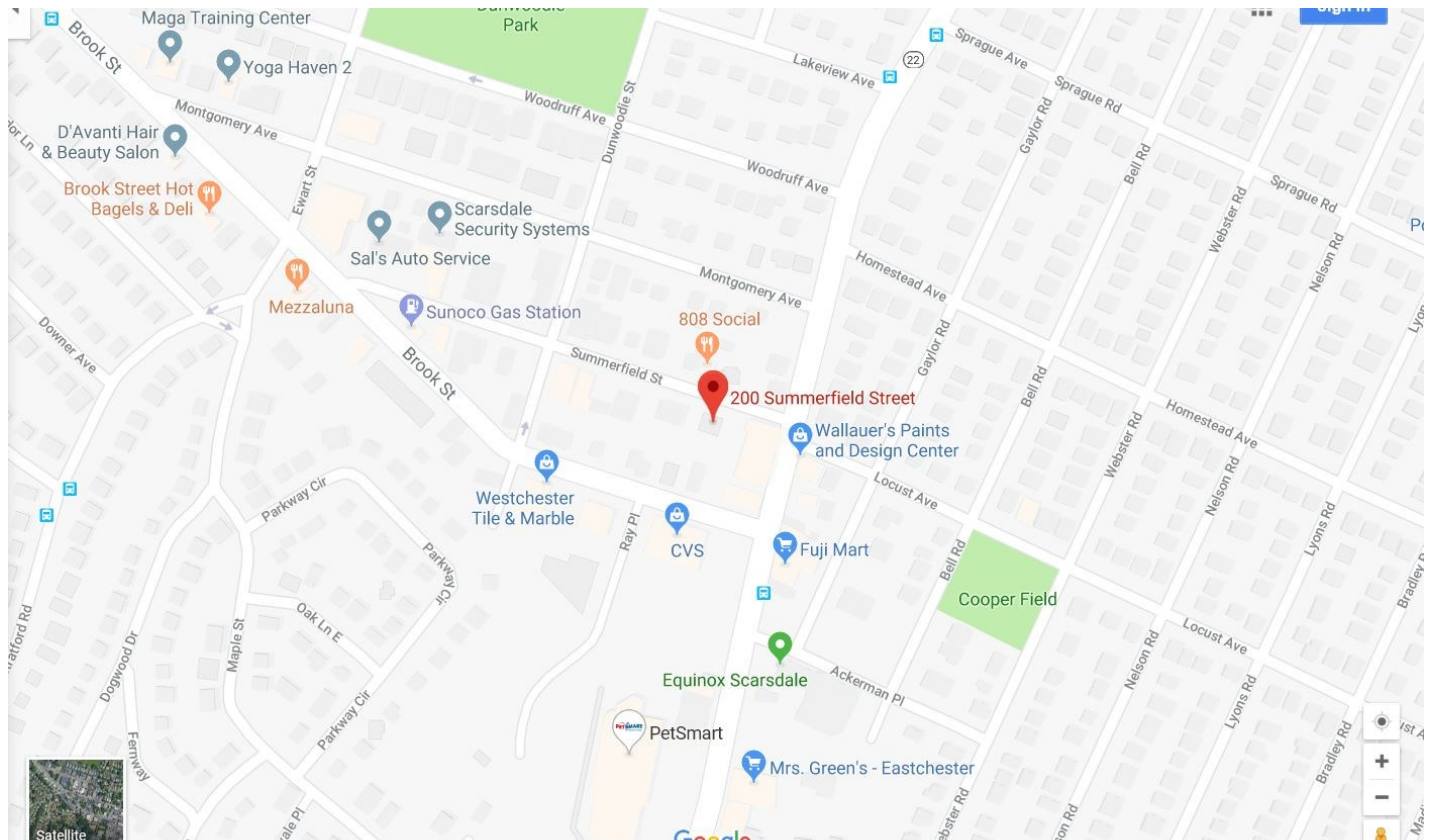
MINUTES TO METRO NORTH STATION

Photo



200 Summerfield Street

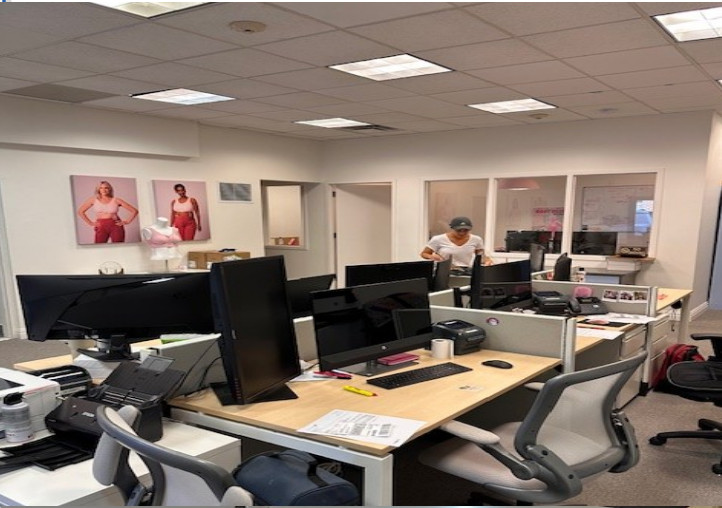
MAPS & ARIAL VIEW



200 Summerfield Street

Scalzo Group

Photos



Contact

Tony DiCamillo
Executive Vice President
Scalzo Group Commercial
4 Stony Hill Road
Bethel, CT 06801
914.787-9571 (Cell)
nyctrealtygroup@gmail.com

Note: This information has been secured from sources we believe to be reliable. We make no representations or warranties, expressed or implied, as to the accuracy of the information. References to square footage or age are approximate. Buyer must verify the information and bears all risk for any inaccuracies.