

99 Spadina Avenue Toronto, Ontario



ALLIED

LEASING CONTACT

Emma Turner
D 416 304 9180 T 416 977 9002
eturner@alliedreit.com

With more than 200 properties across Canada, comprising more than 15 million square feet, Allied has earned a reputation for contributing to the vitality of Canada's most vibrant urban neighbourhoods, and for developing workplaces distinguished by thoughtful, human-scale design, proactive property management, and an unsurpassed occupant experience.

PROPERTY HIGHLIGHTS

Situated in Toronto's Fashion District, this office building is located on the northeast corner of Spadina Avenue and Adelaide Street West.

TELECOM PROVIDERS

- Beanfiled
- Bell

DESCRIPTION

- Exceptional ceiling heights and original hardwood floors
- 1 Passenger Elevator
- 1 Freight Elevator

TRANSIT

- 7 Minute Walk to PATH
- 20 Minute Walk to Union Station
- 3 Minute Walk to Streetcar
 - 510 Spadina
- 13 Minute Walk to St. Andrew Subway Station

SUITE INFORMATION

SUITE	SF	TYPE	AVAILABILITY	VIRTUAL TOUR
B01	3,859	Office	Immediate	N/A
100	7,936	Office	Immediate	N/A
200	7,998	Office	September 1, 2026	N/A

Net Rent

Call Leasing Contact

Additional Rent \$24.83

Includes Utilities,
Excludes In-Suite Janitorial

99 Spadina Avenue Basement Floor Floorplan

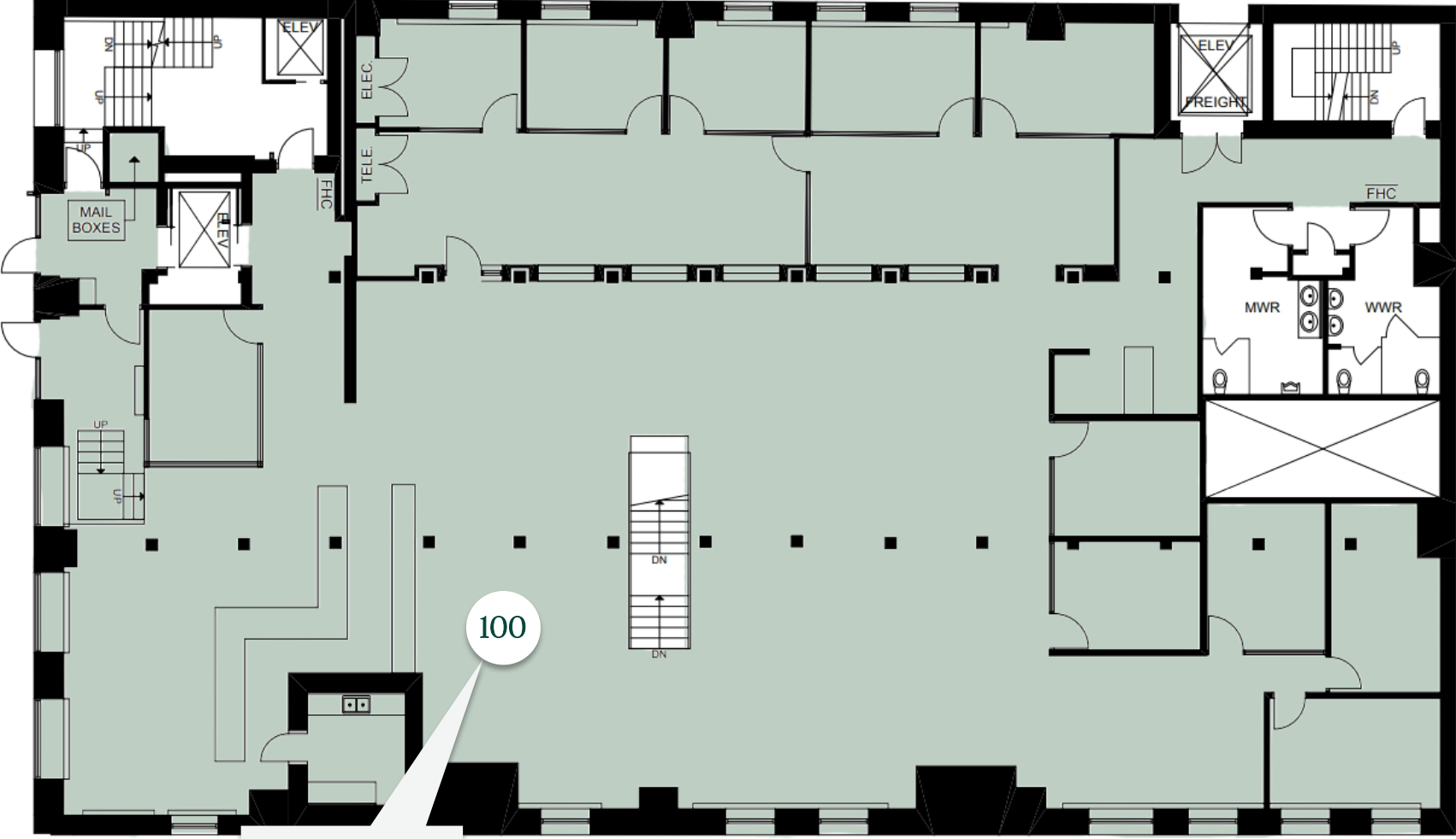


B01

Suite B01
3,859 sf

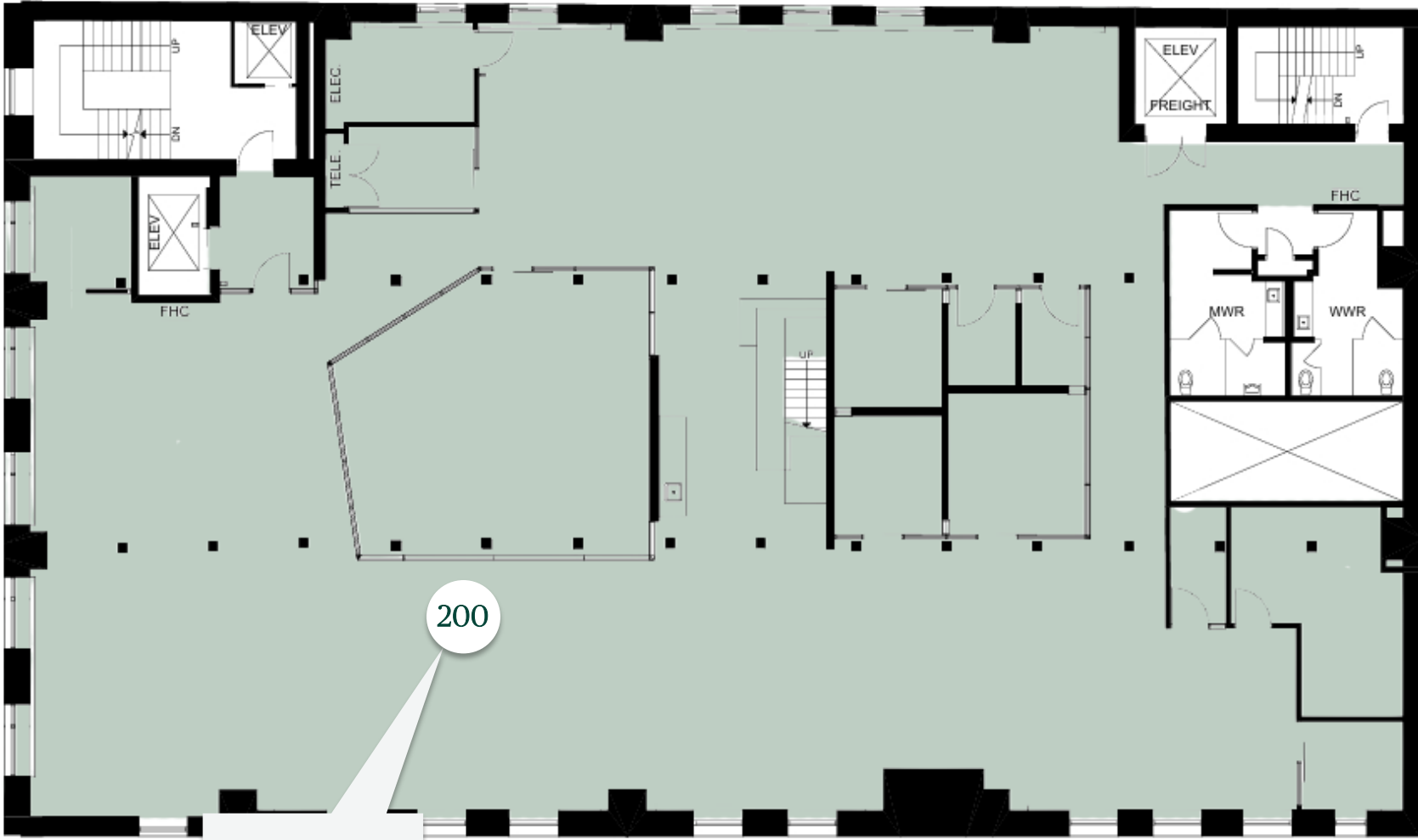
99 Spadina Avenue

First Floor Floorplan



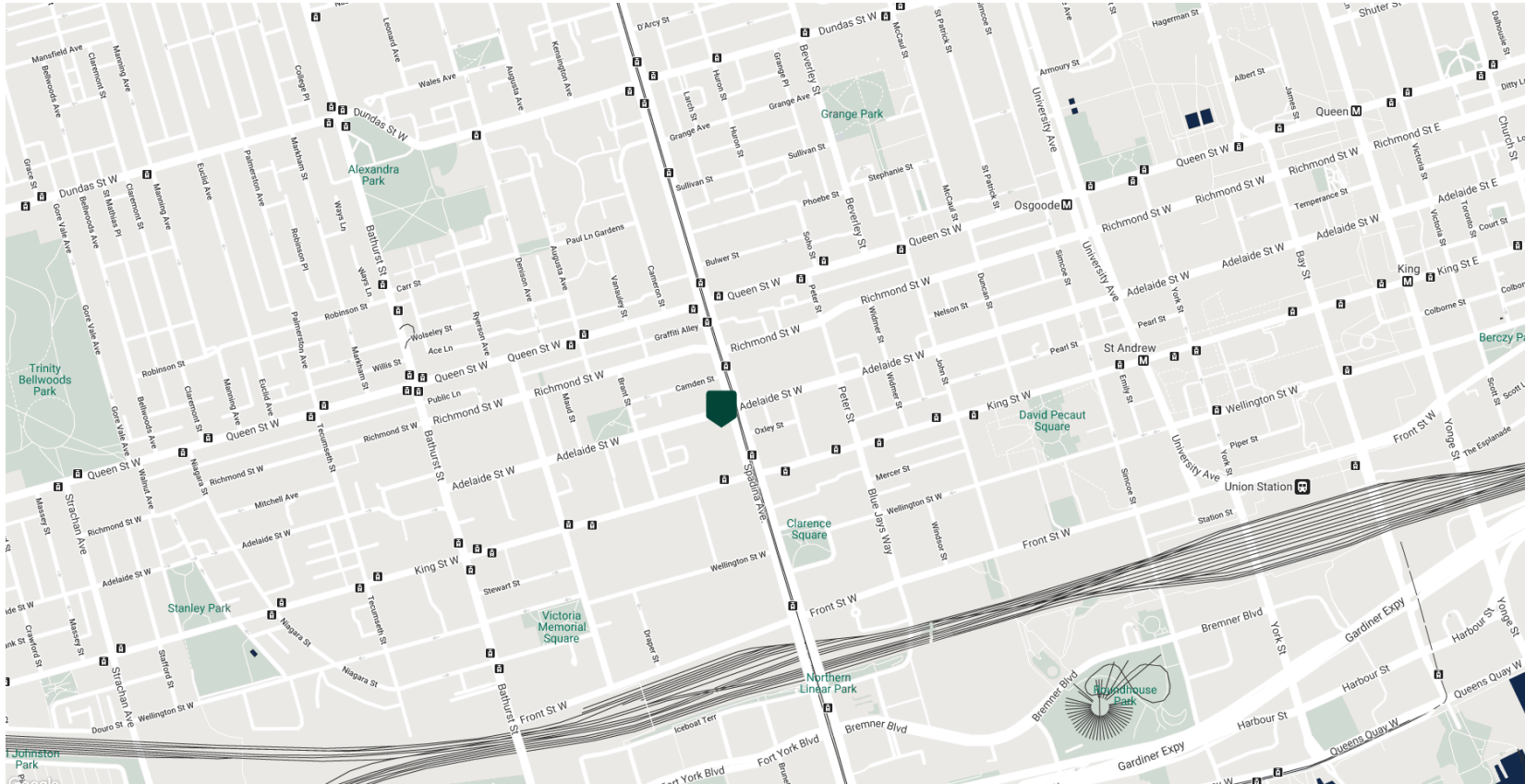
Suite 100
7,936 sf

99 Spadina Avenue Second Floor Floorplan



200

Suite 200
7,998 sf



LOCATION

Walk Score® | 100 Walker's Paradise
 Transit Score® | 100 Rider's Paradise
 Bike Score® | 55
 Less than a one minute walk to streetcars

RESTAURANTS

Belfast Public House
 Gusto 101
 Buca
 Labora

HEALTH & WELLNESS

Totum Life Science
 Barre3
 Elle Fitness and Social
 Drop Boxing

SERVICES

LCBO
 Petro Canada
 RBC Royal Bank
 CIBC

ALLIED

ALLIED PROPERTIES

134 Peter St, Suite 1700 Toronto, On M5v 2H2
T 416 977 9002 F 416 306 8704
alliedreit.com