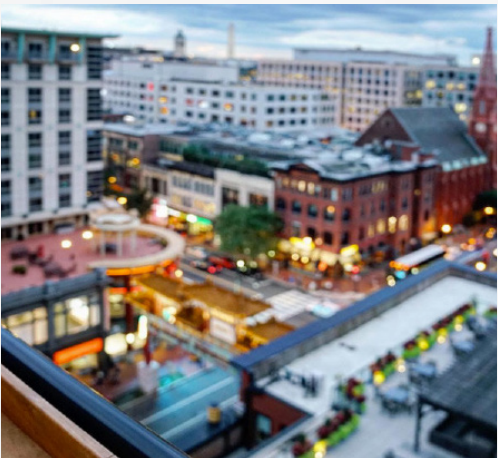


601  
PENN



# *Making History*

601 PENNSYLVANIA AVENUE, NW  
WASHINGTON, DC



## UNPARALLELED LOCATION

**601 Pennsylvania Avenue** boasts an unparalleled location: steps from both the **U.S. Capitol** and **Penn Quarter**, D.C.'s foremost entertainment district with unending restaurant options and attractions. Access to and from the Building couldn't be easier - Building tenants can access three (3) Metro stations within a 5-block radius and are only a short distance from Union Station. With convenient access to **I-395** for travel in and out of D.C., **Reagan International Airport** is a short 10-minutes away.



# 1

**BLOCK TO**

YELLOW & GREEN METRO LINES

NATIONAL ARCHIVES

NATIONAL GALLERY OF ART

**ELEVATOR RIDE TO**

CAPITAL GRILLE RESTAURANT



# 3

**BLOCKS TO**

CAPITAL ONE ARENA

NATIONAL MALL



NATIONAL PORTRAIT GALLERY

THE HEART OF PENN QUARTER

**MINUTE DRIVE TO**

THE U.S. CAPITOL

THE WHITE HOUSE



# 5

**BLOCKS TO**

RED LINE METRO

THE WARNER & NATIONAL THEATRES

RELEASE STEAM AT KRAKEN AXES & THE PUTTERY



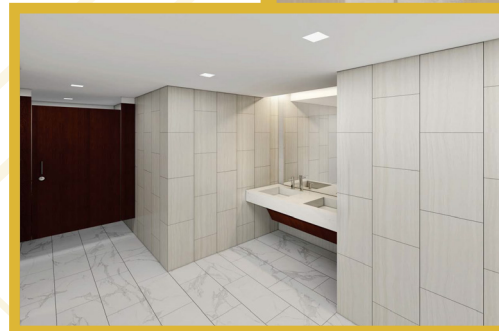
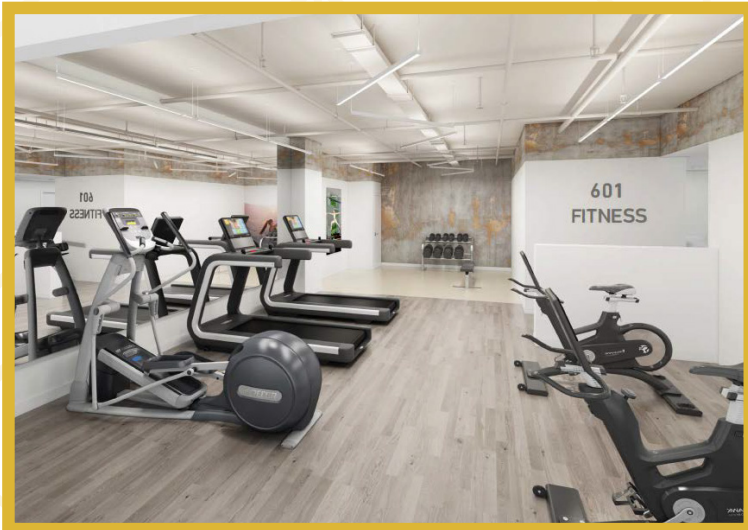
**MINUTE DRIVE TO**

UNION STATION

access I-395 & travel out of town



# *+Renovated Lobby & Fitness Center*



*+ High-End  
Conference  
Center*



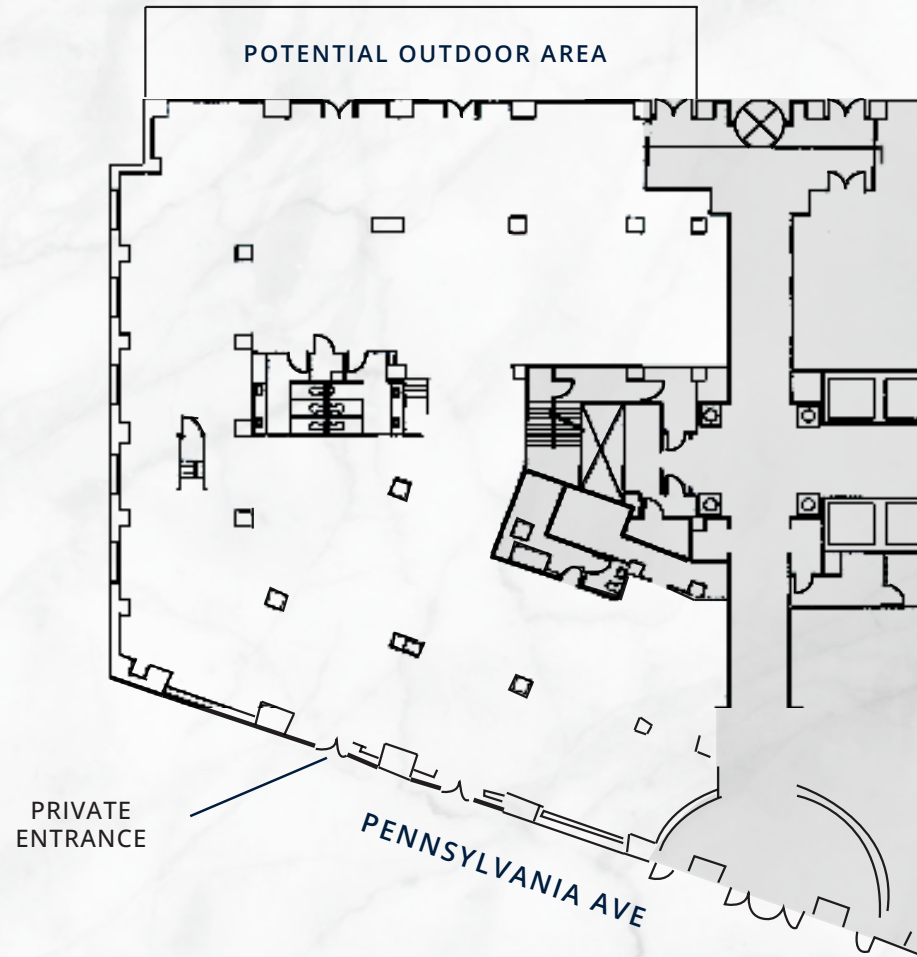
*& Tenant  
Lounge*



# Ground Floor

10,199 RSF

601  
PENN



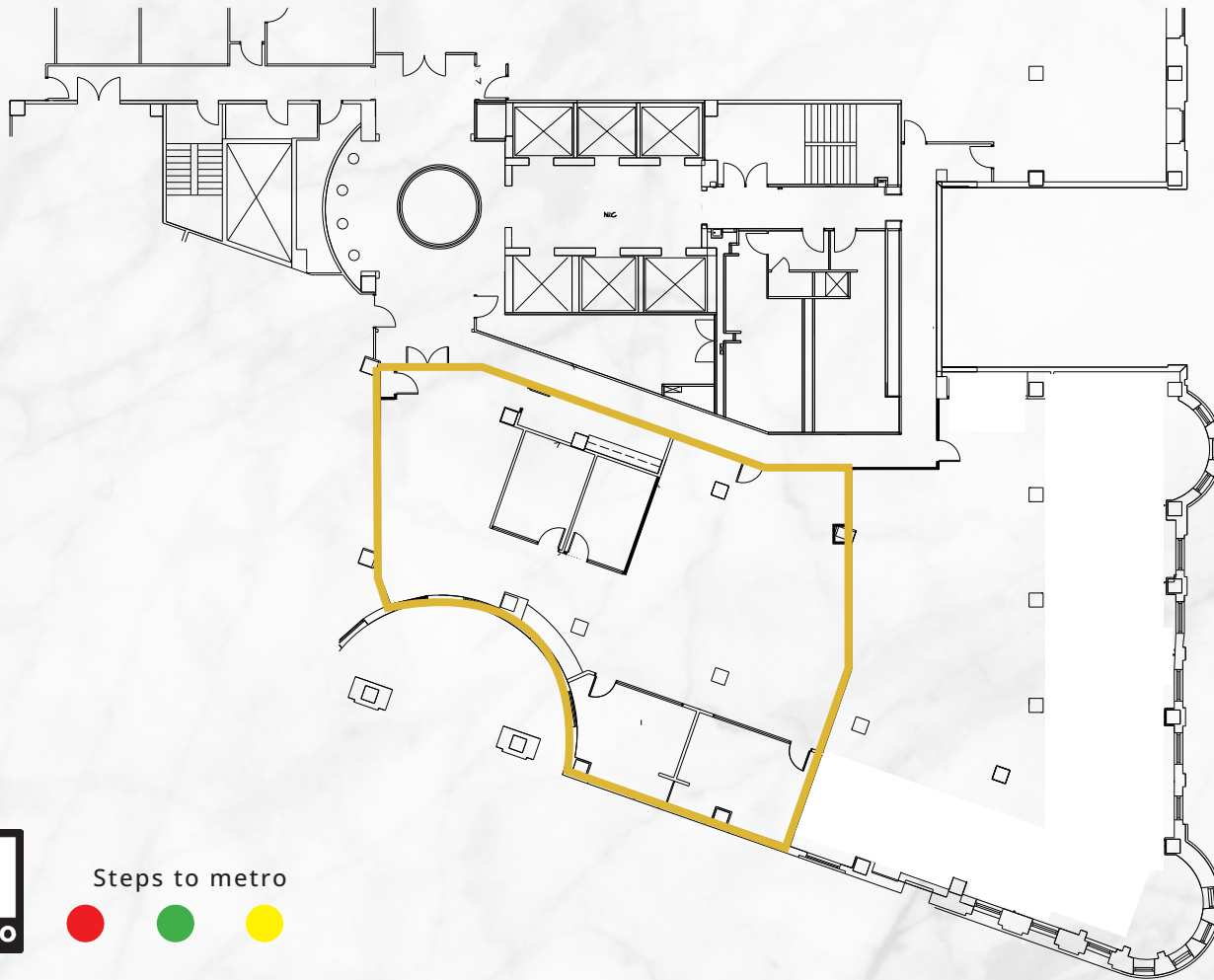
Steps to metro



5 MINUTE WALK

# Suite 210

601  
PENN



Steps to metro



5 MINUTE WALK

# Suite 200

5,708 RSF AS-IS CONDITION

# 601 PENN

KEY PLAN



Steps to metro



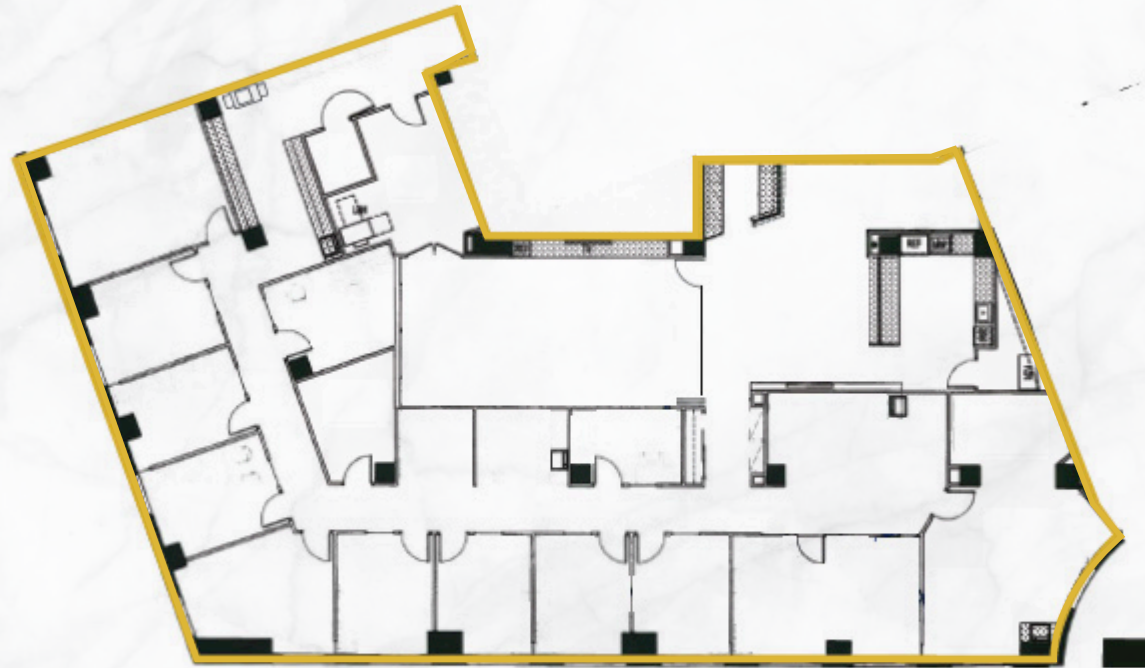
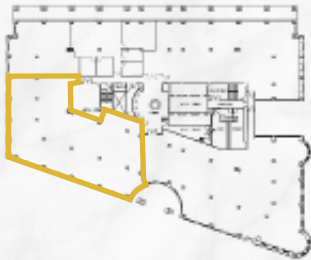
5 MINUTE WALK

# Suite 230

6,873 RSF AS-IS CONDITION

# 601 PENN

KEY PLAN



PENNSYLVANIA AVENUE



Steps to metro

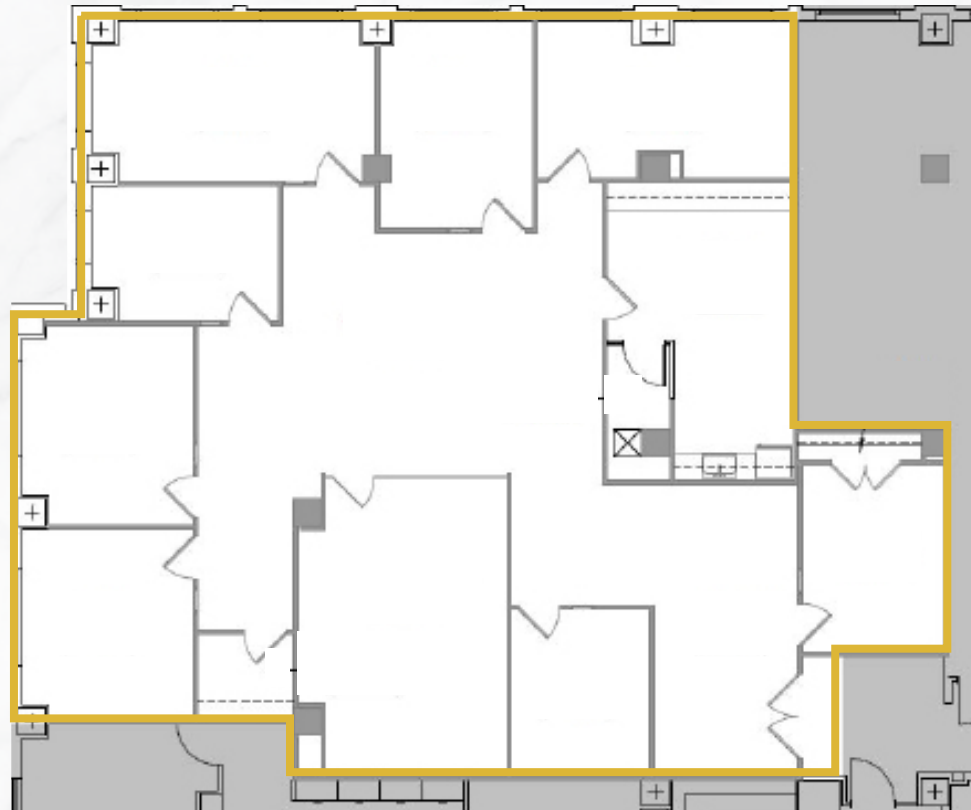


5 MINUTE WALK

# 601 PENN

3,459 RSF

KEY PLAN



Steps to metro



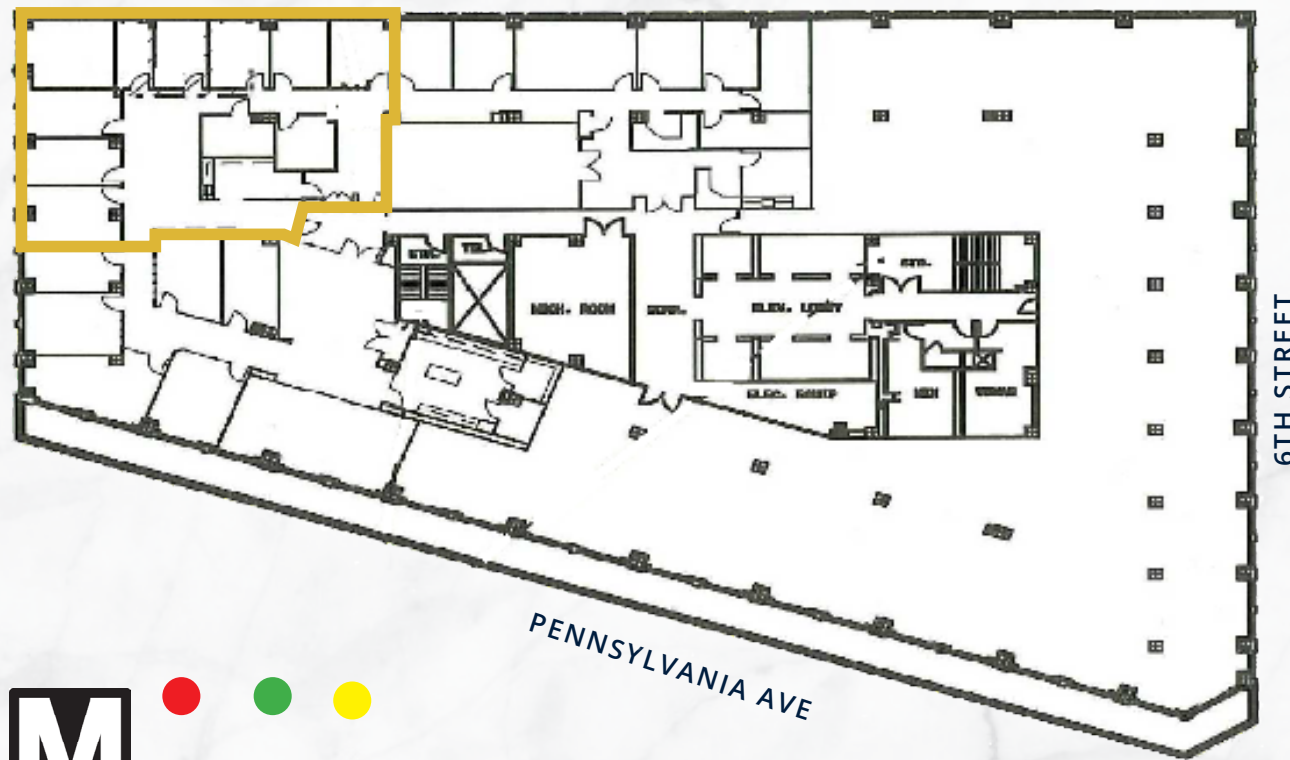
5 MINUTE WALK

# 8th Floor

3,125 RSF AS BUILT

# 601 PENN

COURTYARD VIEWS



- + Nine (9) windowed offices
- + Conference for up to 10 people
- + Room for Two (2) to Four (4) work stations
- +



● ● ●  
Steps to metro



5 MINUTE  
WALK



601 PENNSYLVANIA AVENUE NW  
WASHINGTON, DC



**MARK SULLIVAN** | [MARK.SULLIVAN@COLLIERS.COM](mailto:MARK.SULLIVAN@COLLIERS.COM)  
**MATTHEW VENOS** | [MATTHEW.VENOS@COLLIERS.COM](mailto:MATTHEW.VENOS@COLLIERS.COM)  
**VENUS JONES** | [VENUS.JONES@COLLIERS.COM](mailto:VENUS.JONES@COLLIERS.COM)