

**NEWLY RENOVATED BUILDING  
OFFICE/MEDICAL SPACE AVAILABLE**

## **WEST ORANGE, NJ**

**347 MOUNT PLEASANT AVENUE**

COUNTRY CLUB PLAZA

**2,544 -  
19,225 SF  
Available**

Newly Renovated Office/  
Medical Building with  
Ample Parking



### **STATE-OF-THE-ART AMBULATORY SURGERY CENTER**

- Equipped with the latest technology
- 3 Class C operating rooms
- Located on 3rd Floor
- Available for Surgeries and usage by existing surgeons in the building or new surgeons

**RIPCO**  
REAL ESTATE

# SPACE DETAILS

## STREET VIEW



### STATE-OF-THE-ART AMBULATORY SURGERY CENTER

- Equipped with the latest technology
- 3 Class C operating rooms
- Located on 3rd Floor
- Available for Surgeries and usage by existing surgeons in the building or new surgeons

## PARKING



### COUNTRY CLUB VIEWS FROM THE OFFICE UNITS

## SUITES AVAILABLE

2nd Floor	
Suite 200	5,462 SF*
Suite 202	2,861 SF*
Suite 204	2,544 SF*
Suite 205	8,358 SF*
Total	19,225 SF

\*Suites are divisible and can be combined for 19,225 SF

## POSSESSION

Immediate

## ASKING RENT

Upon Request  
- plus \$2.00 PSF electric inclusion

## COMMENTS

- Newly renovated Office/Medical building consisting of 50,462 SF
- State-of-the-art Ambulatory Surgery Center equipped with the latest technology, located on the third floor - 3 Class C operating rooms
- Great location - close proximity to restaurants, shopping, banking, medical, and LA Fitness
- Ample parking
- 479,163 Daytime Population in 5 miles
- Internet Provider: Comcast in building
- Verizon is only available for phone lines, no Fios in the area
- Excellent Access to Major Highways including NJ Turnpike, GSP, Interstates 78, 80, 280, and 287
- Professionally managed and owner occupied

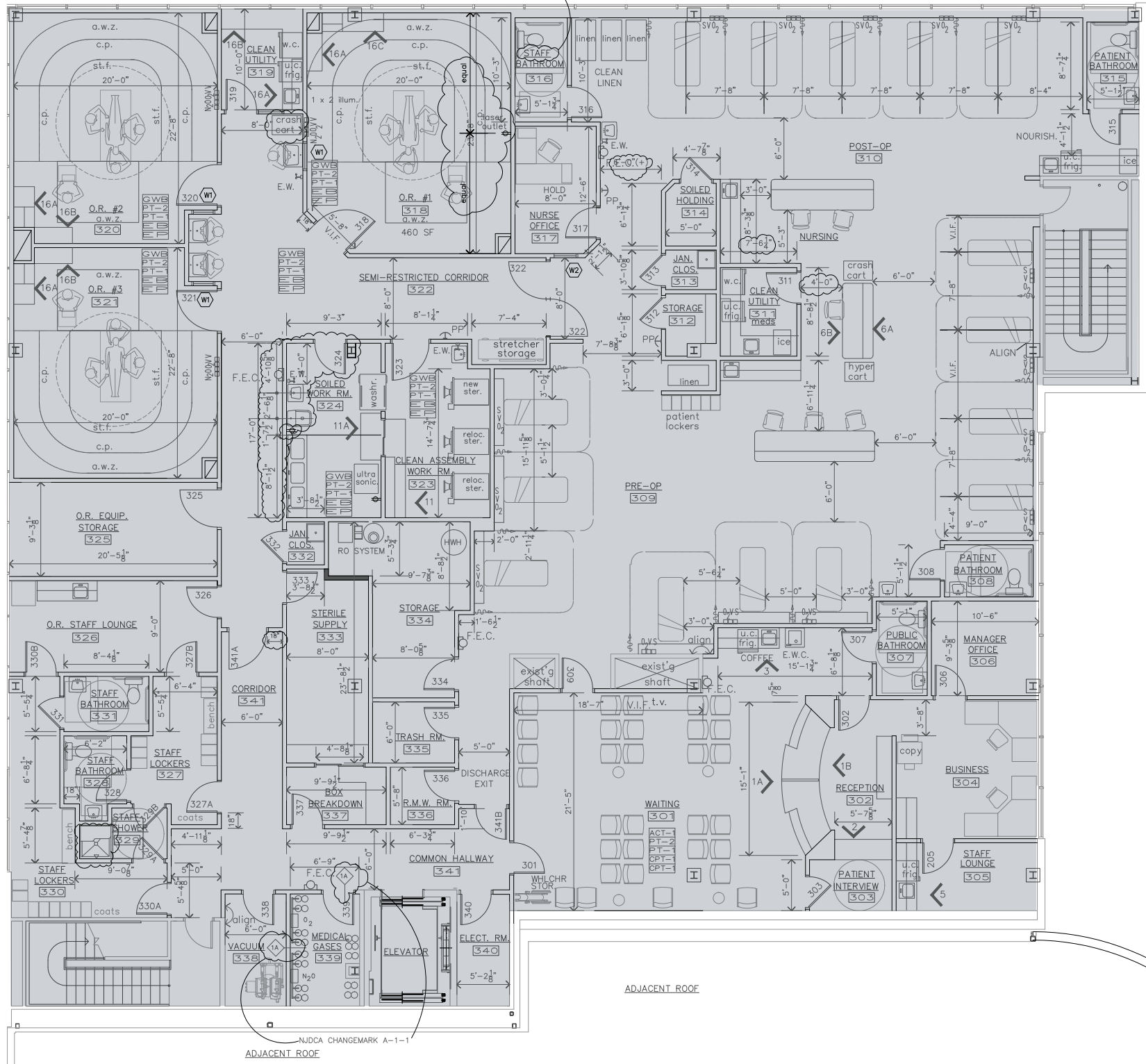
## NEIGHBORS

Essex County Country Club, Redwood Elementary School, Eagle Rock Reservation

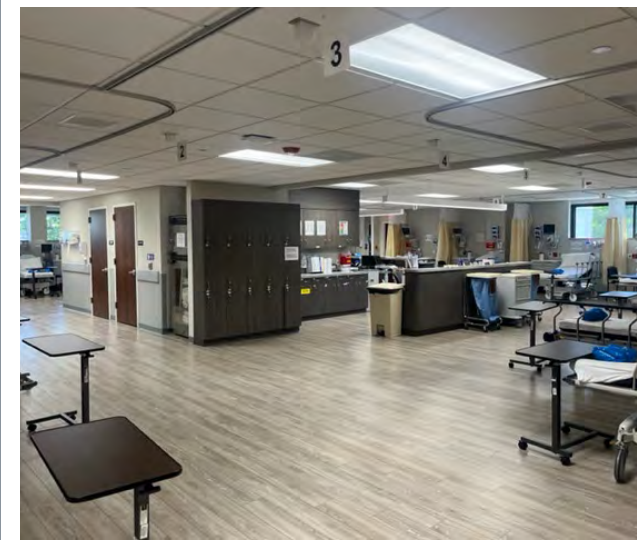
- **THIRD FLOOR SURGICAL CENTER FLOOR PLAN**
- **INTERIOR PHOTOS OF SURGICAL CENTER**
- **LOBBY PHOTOS OF THE BUILDING**

**SURGICAL CENTER (3 CLASS C OPERATING ROOM) FOR OUTPATIENTS LOCATED ON THIRD FLOOR — AVAILABLE FOR USE BY SURGEONS IN THE BUILDING**

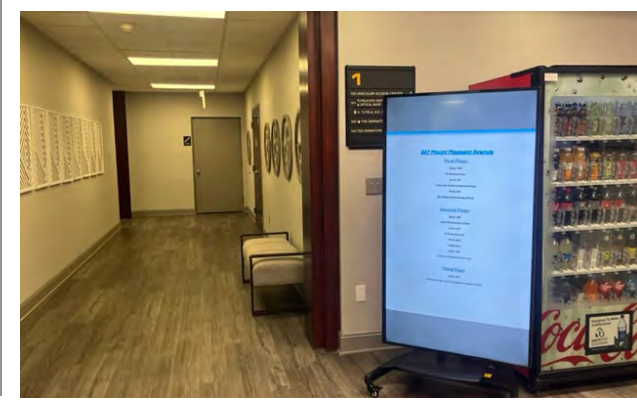
**11,200 SF SURGICAL CENTER - 3 CLASS C OPERATING ROOMS**



ADVANCED SPINE AND OUTPATIENT SURGERY CENTER INTERIOR PHOTOS



LOBBY PHOTOS



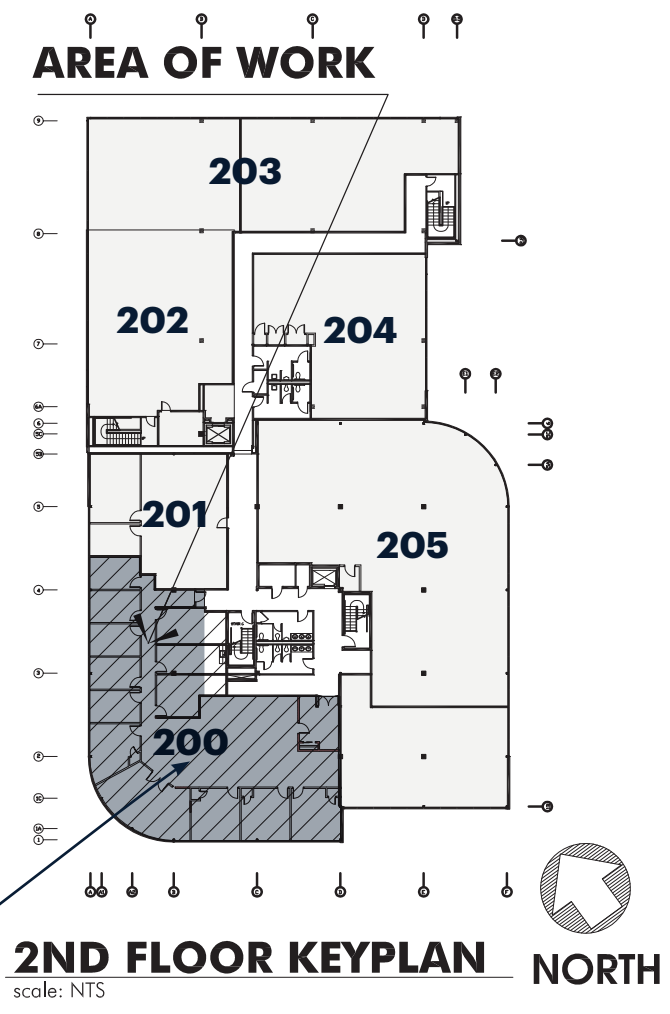
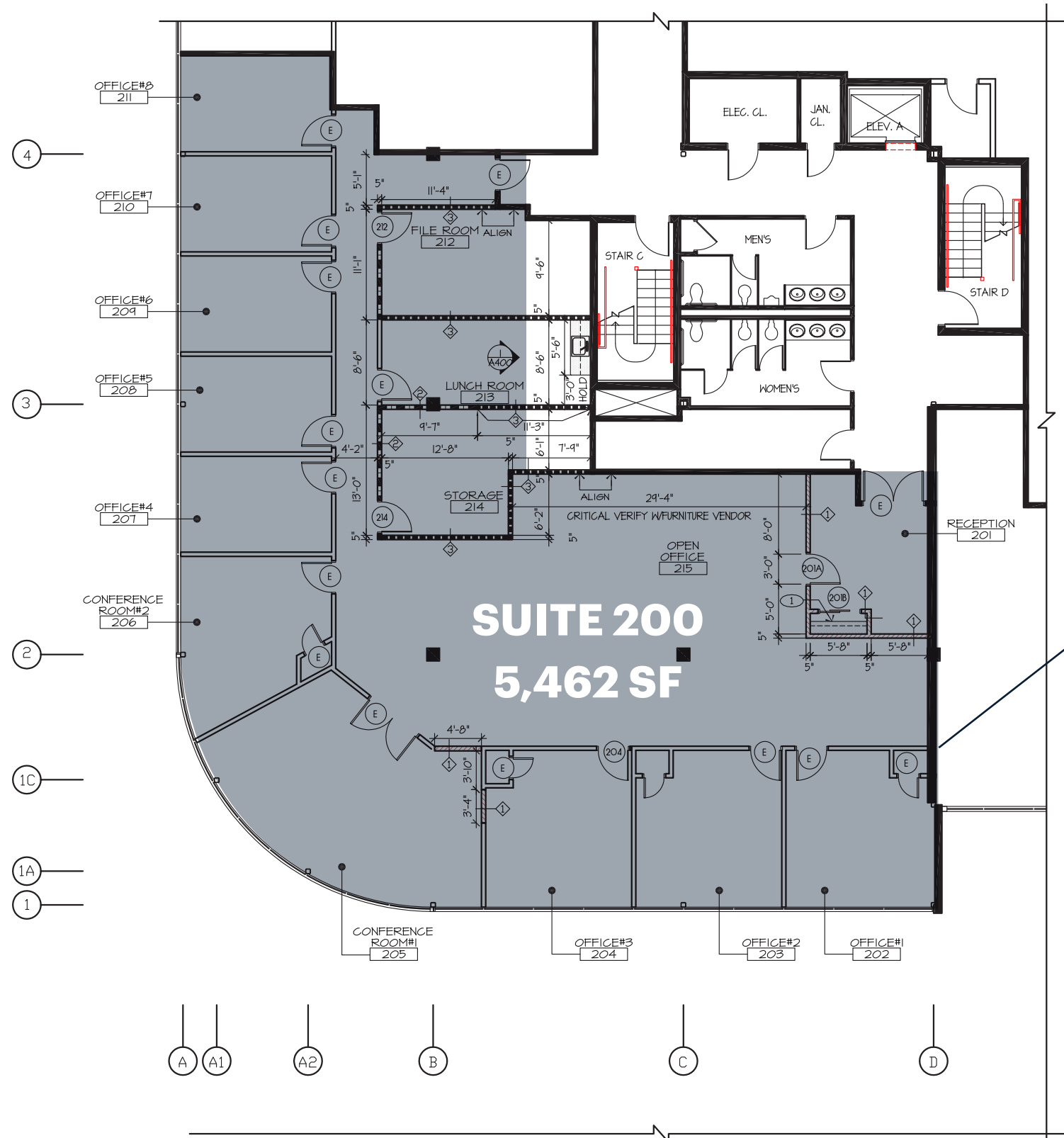
# AREA RETAIL FOR EMPLOYEES/VISITORS CLOSE BY



# ZOOM AERIAL

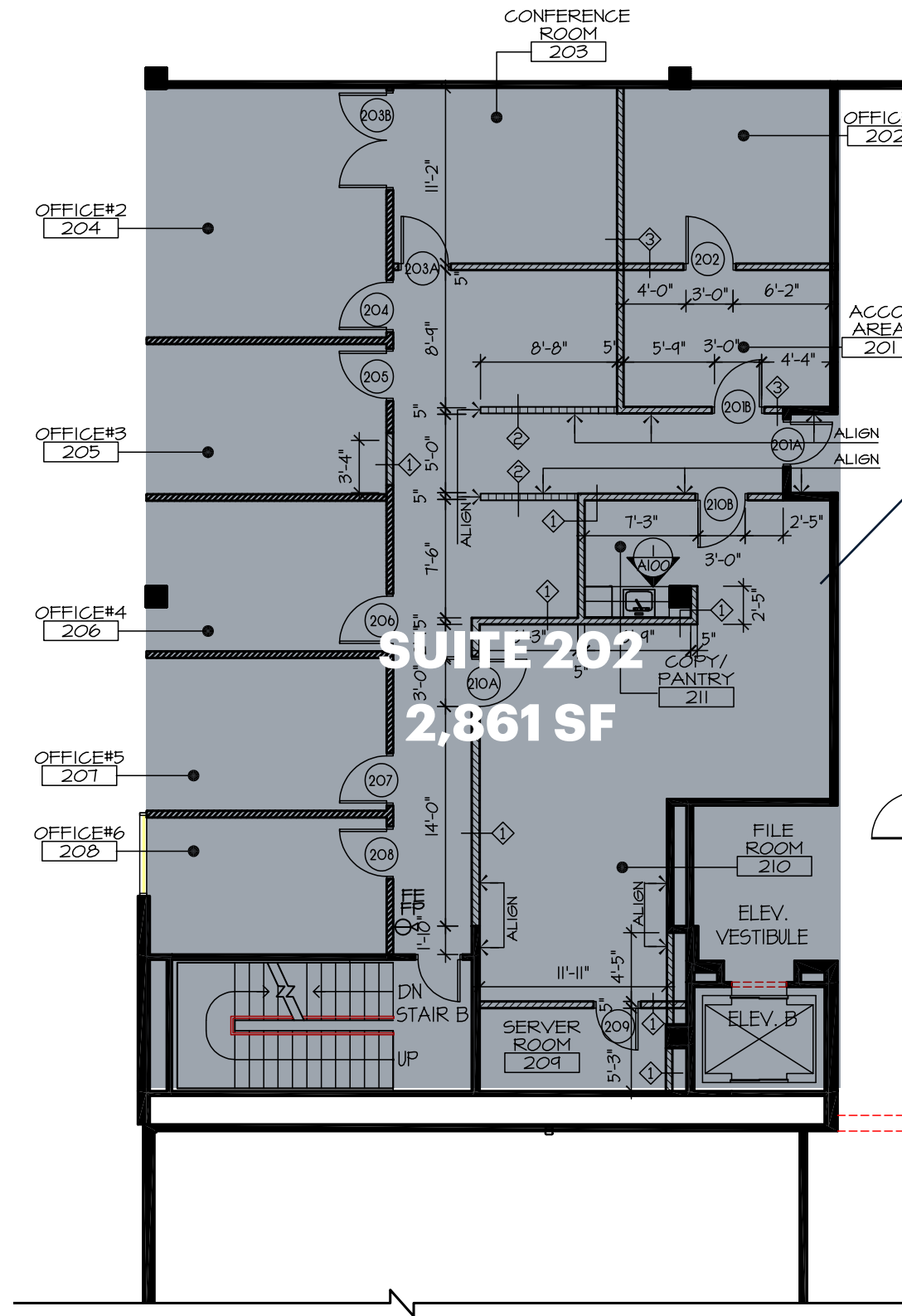


**SECOND FLOOR - FLOOR PLANS**



**CONSTRUCTION PLAN**  
scale: 1/8"=1'-0"

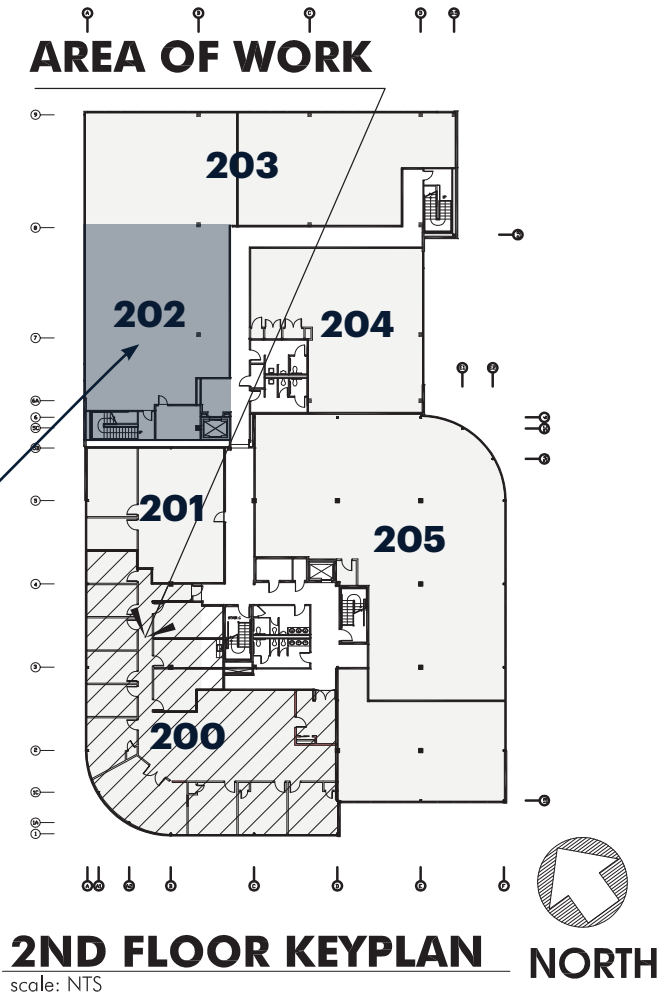
# SECOND FLOOR - FLOOR PLANS



**SUITE 202**  
**2,861 SF**

## CONSTRUCTION PLAN

scale: 1/8" = 1'-0"

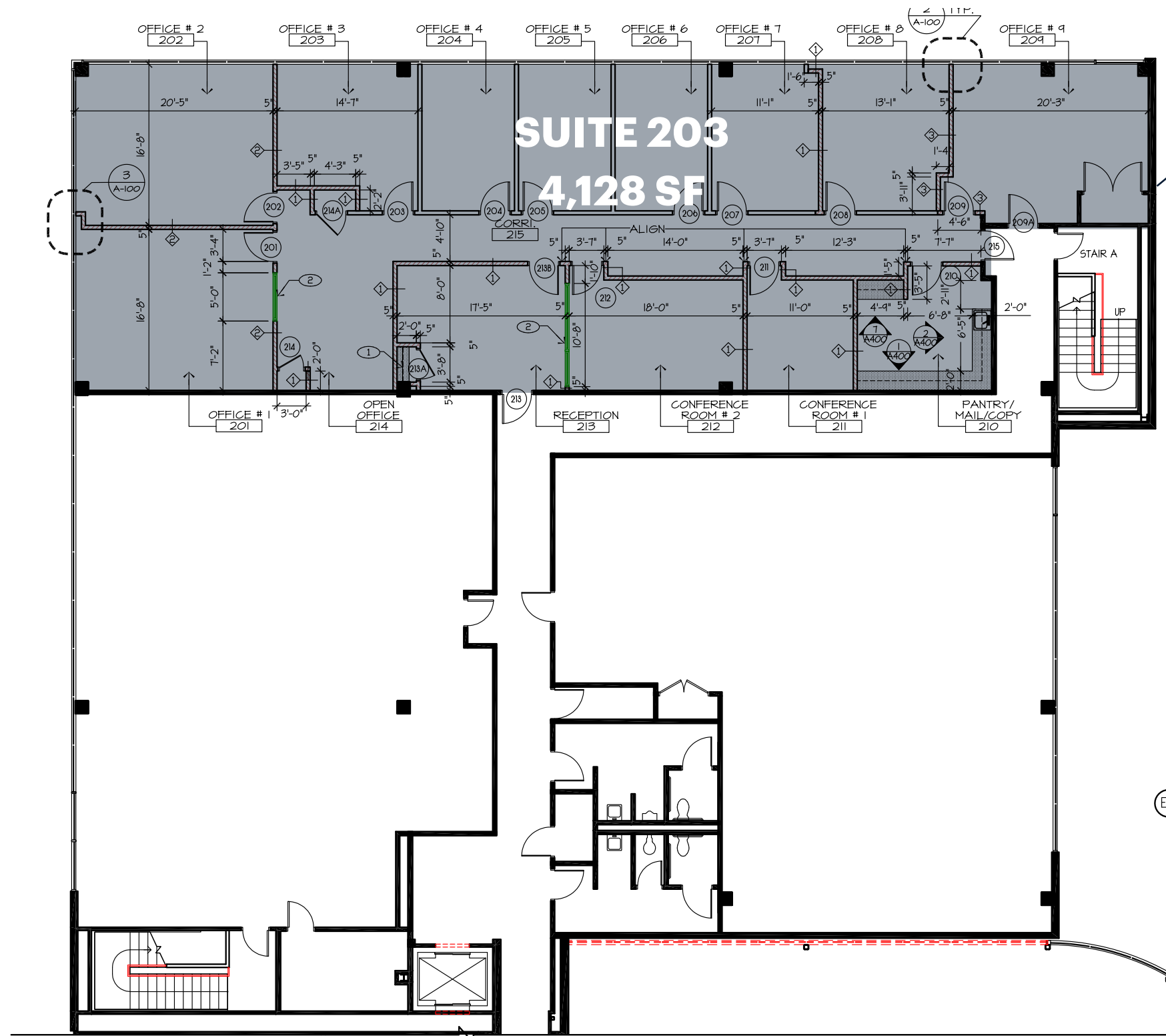


## 2ND FLOOR KEYPLAN

scale: NTS

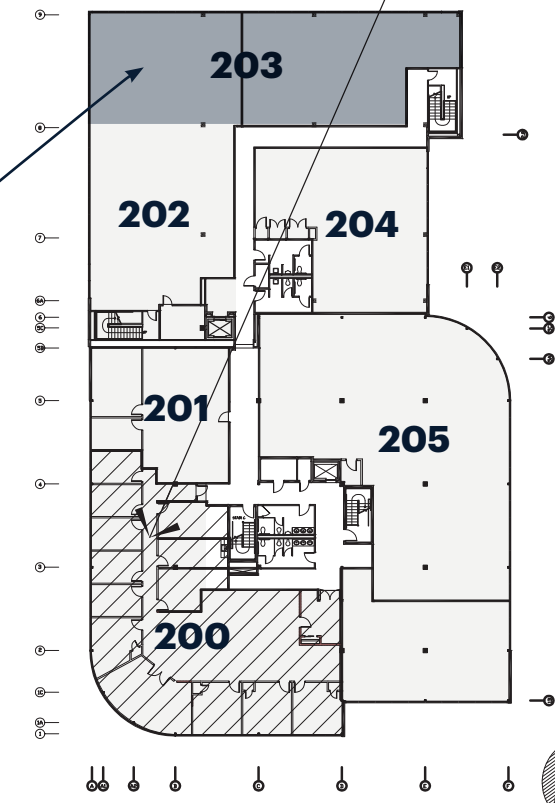
NORTH

# SECOND FLOOR - FLOOR PLANS



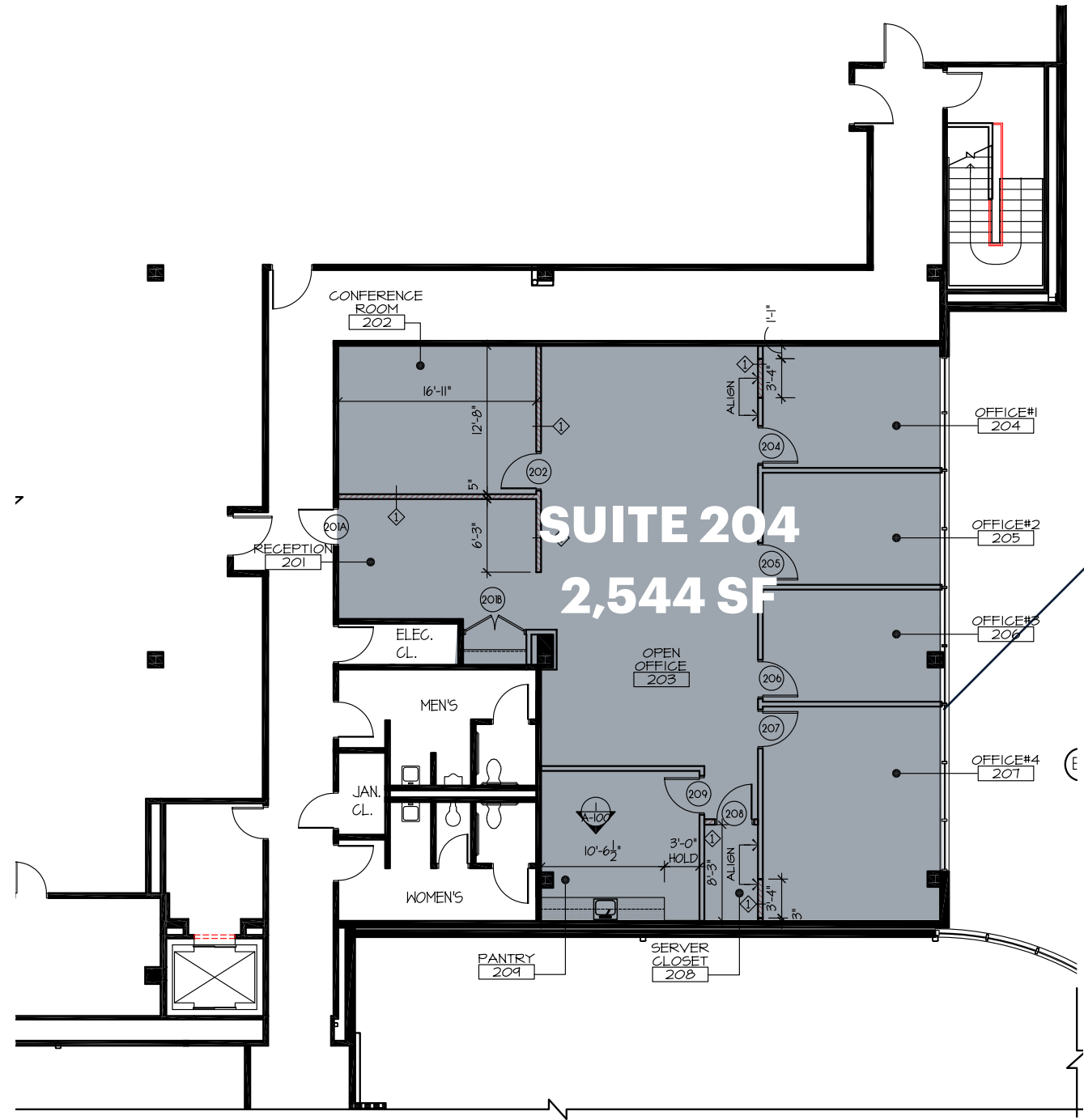
**CONSTRUCTION PLAN**  
scale: 1/8"=1'-0"

## AREA OF WORK



**2ND FLOOR KEYPLAN** NORTH  
scale: NTS

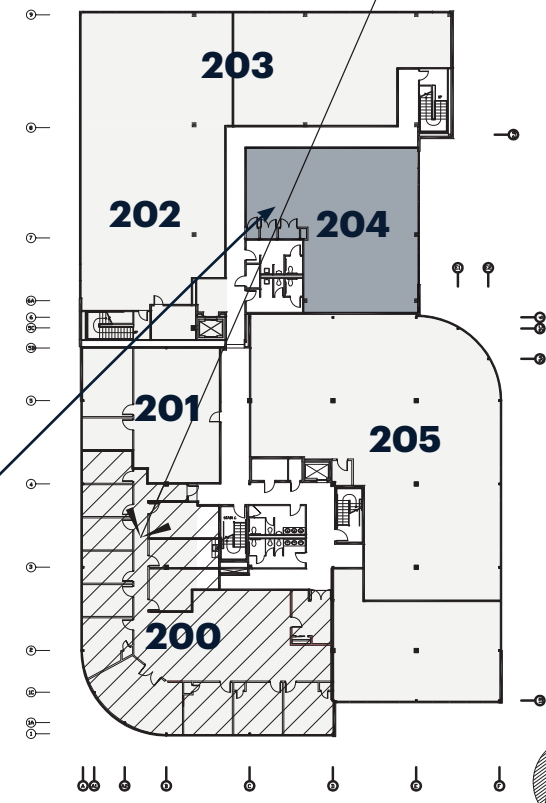
# SECOND FLOOR - FLOOR PLANS



## CONSTRUCTION PLAN

scale: 1/8"=1'-0"

## AREA OF WORK

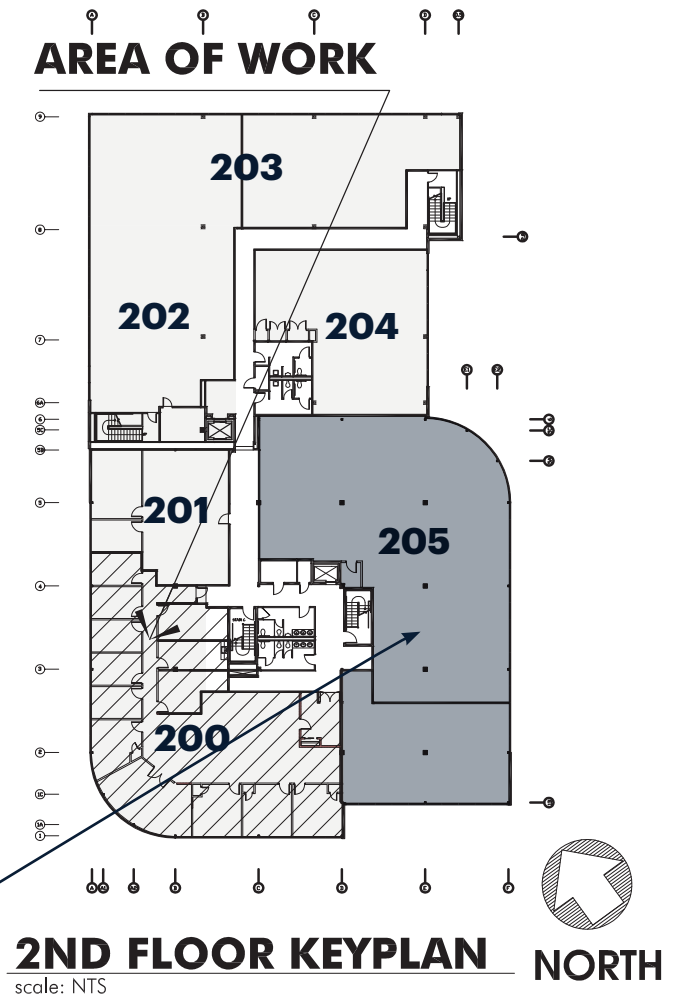
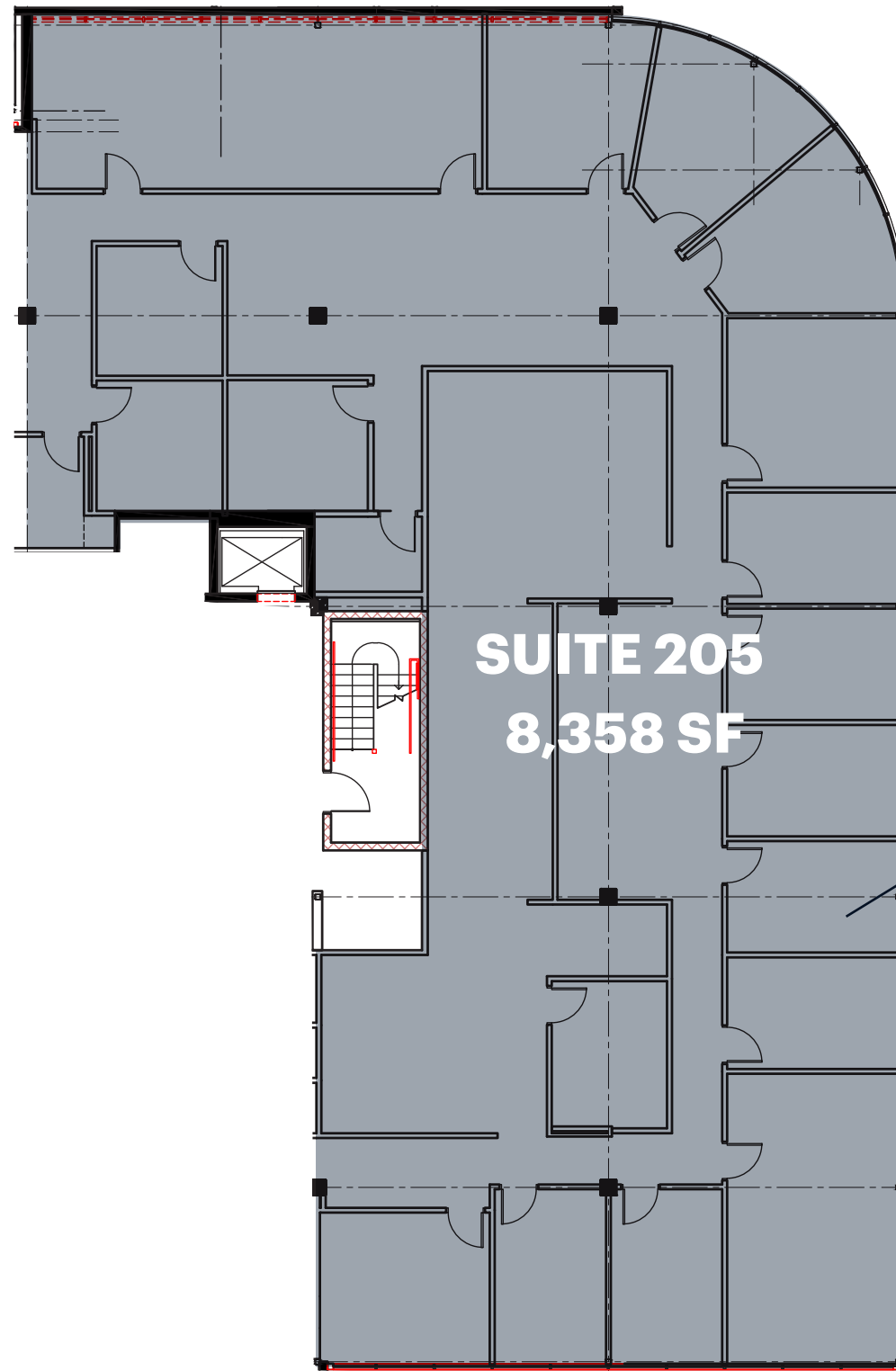


## 2ND FLOOR KEYPLAN

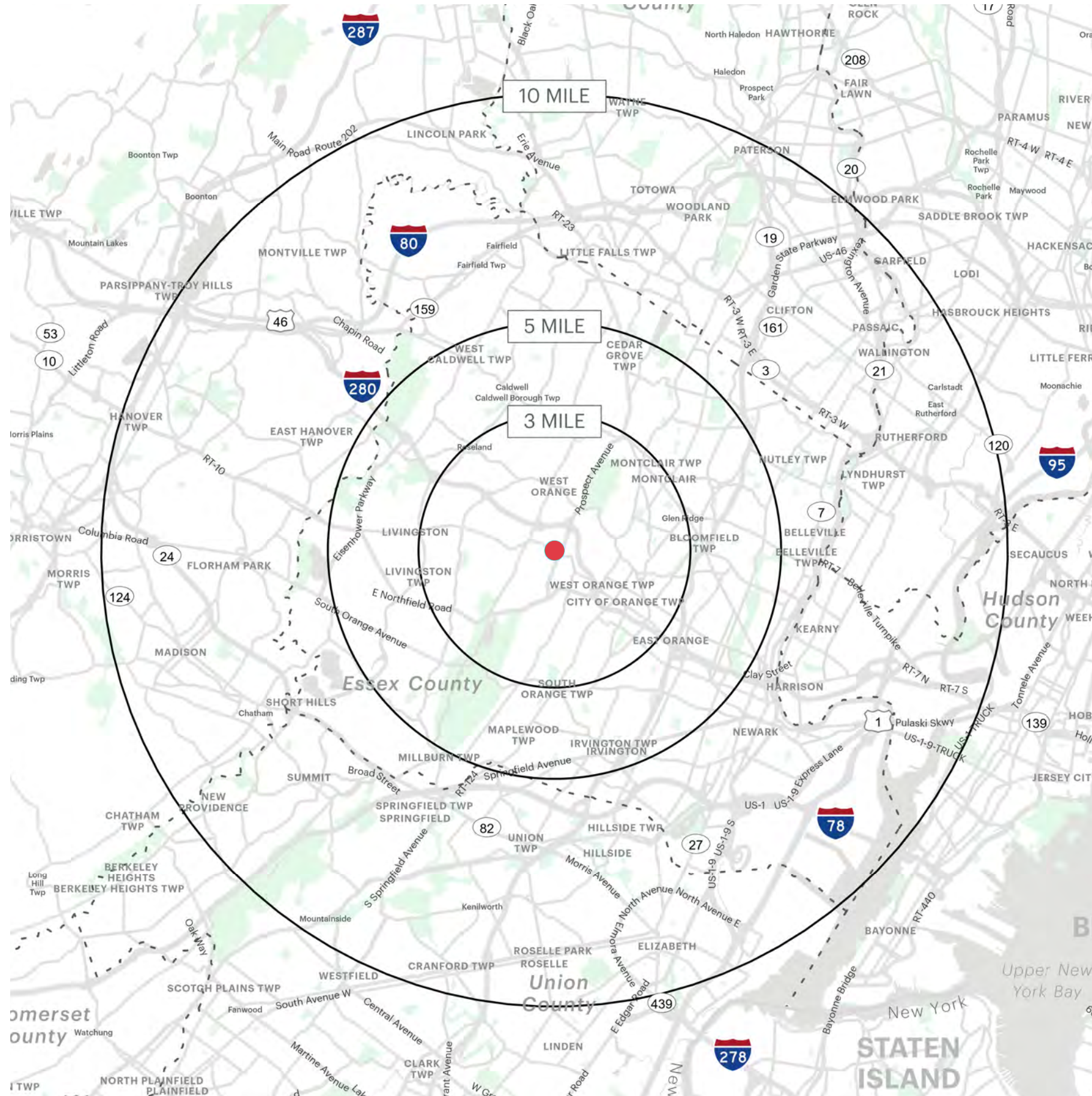
scale: NTS



# SECOND FLOOR - FLOOR PLANS



# AREA DEMOGRAPHICS



## **3 MILE RADIUS**

### **POPULATION**

167,769

### **HOUSEHOLDS**

64,400

### **MEDIAN HOUSEHOLD INCOME**

\$107,601

### **COLLEGE GRADUATES (Bachelor's +)**

56,453

### **TOTAL BUSINESSES**

5,404

### **TOTAL EMPLOYEES**

60,653

### **DAYTIME POPULATION (w/ 16 yr +)**

144,168

### **AVERAGE HOUSEHOLD INCOME**

\$177,679

## **5 MILE RADIUS**

### **POPULATION**

573,027

### **HOUSEHOLDS**

214,489

### **MEDIAN HOUSEHOLD INCOME**

\$92,458

### **COLLEGE GRADUATES (Bachelor's +)**

169,840

### **TOTAL BUSINESSES**

15,204

### **TOTAL EMPLOYEES**

166,199

### **DAYTIME POPULATION (w/ 16 yr +)**

484,339

### **AVERAGE HOUSEHOLD INCOME**

\$155,244

## **10 MILE RADIUS**

### **POPULATION**

1,790,698

### **HOUSEHOLDS**

648,746

### **MEDIAN HOUSEHOLD INCOME**

\$92,491

### **COLLEGE GRADUATES (Bachelor's +)**

489,563

### **TOTAL BUSINESSES**

61,145

### **TOTAL EMPLOYEES**

743,221

### **DAYTIME POPULATION (w/ 16 yr +)**

1,761,548

### **AVERAGE HOUSEHOLD INCOME**

\$141,835

\*2025 estimates

## CONTACT EXCLUSIVE AGENTS

**DEBORAH STONE**  
dstone@ripconj.com  
201.914.4406

**RICHARD CURRAN**  
rcurran@ripconj.com  
201.803.6740

**RIPCO**  
REAL ESTATE

611 River Drive  
3rd Floor  
Elmwood Park, NJ 07407  
201.777.2300

Please visit us at [ripcony.com](https://www.ripcony.com) for more information

This information has been secured from sources we believe to be reliable, but we make no representations as to the accuracy of the information. References to square footage are approximate. Buyer must verify the information and bears all risk for any inaccuracies.