

# 1720

BURLINGAME, CA

MEDICAL LAB SPACE

±1,529 RSF AVAILABLE

## EL CAMINO REAL



**ANCHOR**  
HEALTH PROPERTIES

**CBRE**

# 1720

BURLINGAME, CA

EL CAMINO REAL

- Prime Medical Office Space
- Across from Mills-Peninsula Medical Center
- Close Proximity to Milbrae Bart and Caltrain Station
- Monument Signage Available
- Ample Free Parking for Staff and Patients
- Easy Access to I 280, Hwy 101, and SR 82



## PROPERTY IMPROVEMENTS

- Large Indoor/Outdoor Amenity Area
- Exterior Entry and Lobby Area
- Upgraded Common Areas
- TI's Available

**ANCHOR**  
HEALTH PROPERTIES

**CBRE**

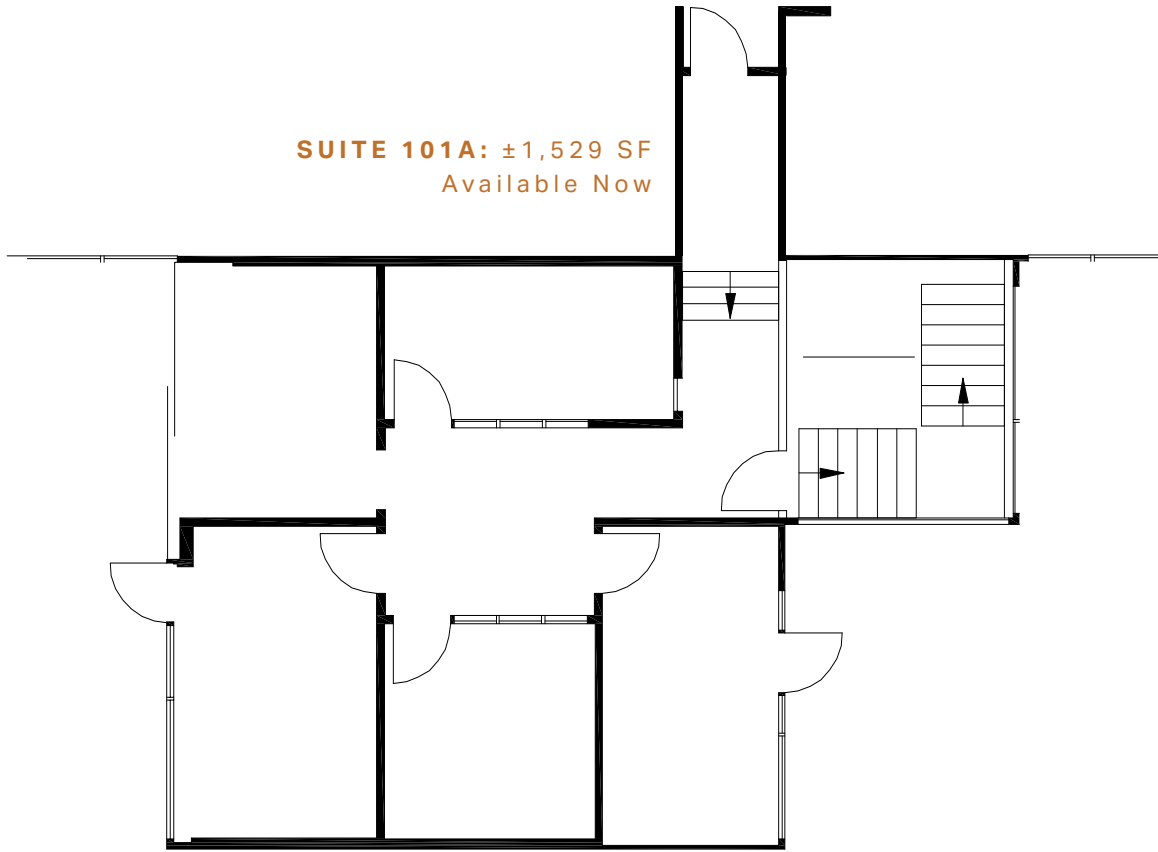
# FLOOR PLANS

# 1720

BURLINGAME, CA

EL CAMINO REAL

**SUITE 101A: ±1,529 SF**  
Available Now



# LOCAL AMENITIES

# 1720

BURLINGAME, CA

EL CAMINO REAL

- Across from Mills-Peninsula Medical Center
- Close Proximity to Millbrae Bart and Caltrain Station
- Easy Access to Hwy 101, I-280, and SR 82



# 1720

BURLINGAME, CA

EL CAMINO REAL

## CONTACT INFORMATION

### **SIMON CLARK**

Lic. 01318652

+1 650 577 2938

[simon.clark@cbre.com](mailto:simon.clark@cbre.com)

© 2025 CBRE, Inc. All rights reserved. This information has been obtained from sources believed reliable, but has not been verified for accuracy or completeness. You should conduct a careful, independent investigation of the property and verify all information. Any reliance on this information is solely at your own risk. CBRE and the CBRE logo are service marks of CBRE, Inc. All other marks displayed on this document are the property of their respective owners, and the use of such logos does not imply any affiliation with or endorsement of CBRE. Photos herein are the property of their respective owners. Use of these images without the express written consent of the owner is prohibited.

