



First Floor

10/11 Heathfield Terrace, Chiswick, London, W4 4JE

Elegant First Floor office to let with fine views over Turnham Green

645 sq ft
(59.92 sq m)

- Central location
- Elegant building
- Fine views
- Available immediately
- New Lease

First Floor, 10/11 Heathfield Terrace, Chiswick, London, W4 4JE

Summary

Available Size	645 sq ft
Rent	£24,000 per annum £37.20 psf
Rates Payable	£12.77 per sq ft
Rateable Value	£16,500
Service Charge	£5,000 per annum Includes on floor cleaning, gas and electricity
VAT	To be confirmed
Legal Fees	Each party to bear their own costs
EPC Rating	D (82)

Description

The premises comprise a first floor office enjoying impressive views across Turnham Green through elegant traditional sash windows. The office shares common kitchen and WC facilities with other occupiers. There is one car space available.

Location

The property is situated in the heart of Chiswick in a prominent position overlooking Turnham Green. It is within a short walk of both Turnham Green & Chiswick Park Underground Stations (District Line Zone2/3), and close to numerous local Bus Routes. Facilities nearby include Waitrose, Chiswick Post Office, and many multiple and independent retailers and restaurants.

Viewings

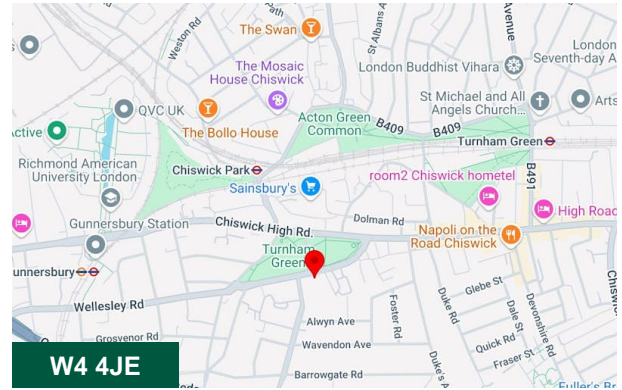
Strictly by appointment with Whitman & Co Commercial.

Terms

Available on a new lease outside the Landlord & Tenant Act on terms to be agreed.

RICS Code for Leasing Business Premises

We refer you to the RICS Code for Leasing Business Premises, which provides some important guidance on commercial leasing matters.



Viewing & Further Information



Jeremy Day FRICS

020 8747 8800 | 07966 810030

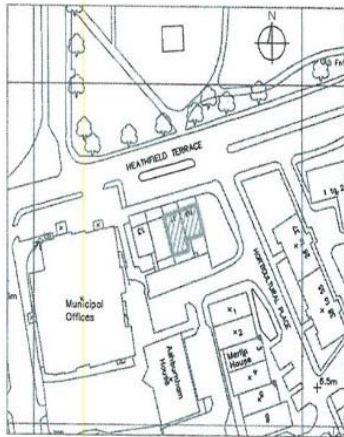
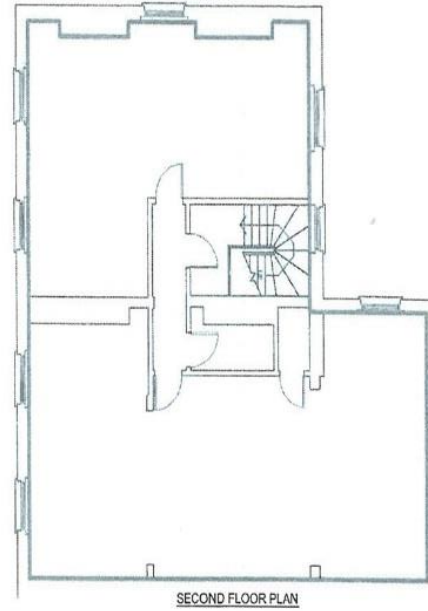
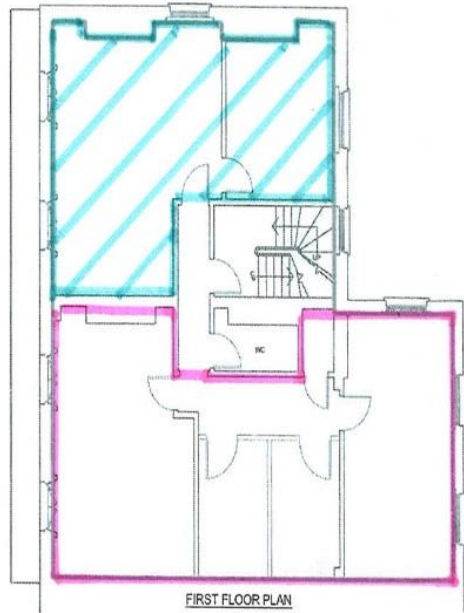
jd@whitmanandco.com







FRONT



LEASE PLAN - Page 2 of 2

10 / 11 HEATHFIELD TERRACE
CHISWICK
LONDON
W4 4JE

JANUARY 08
SCALE 1 : 100



MMV
for Sale