

1181

QUEEN STREET WEST

One Unit Remaining!

Prime West Queen West Retail for Lease



LOCATED AT QUEEN WEST & SUDBURY STREET



CBRE



1181

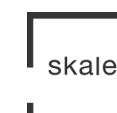
QUEEN STREET WEST

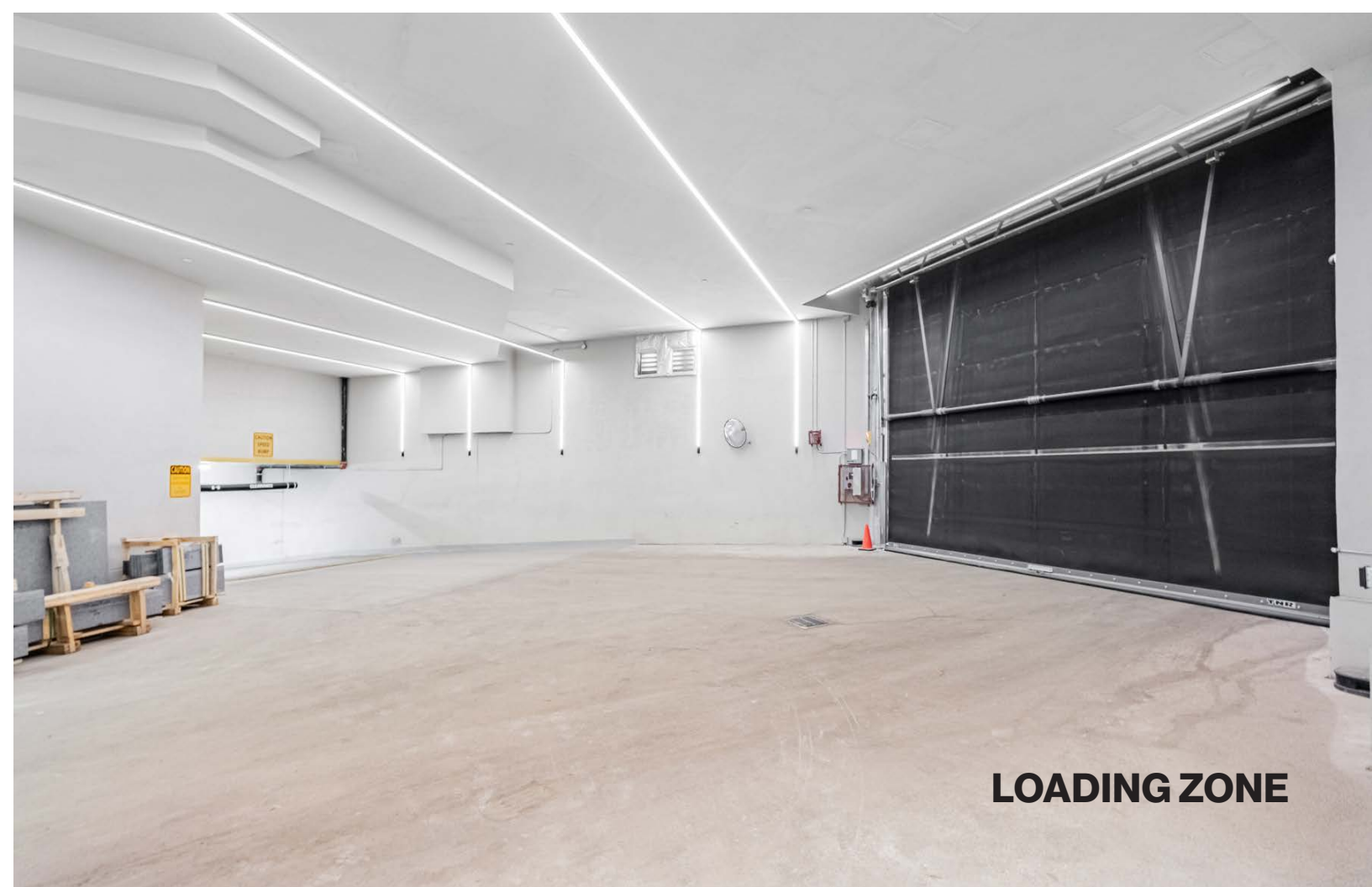
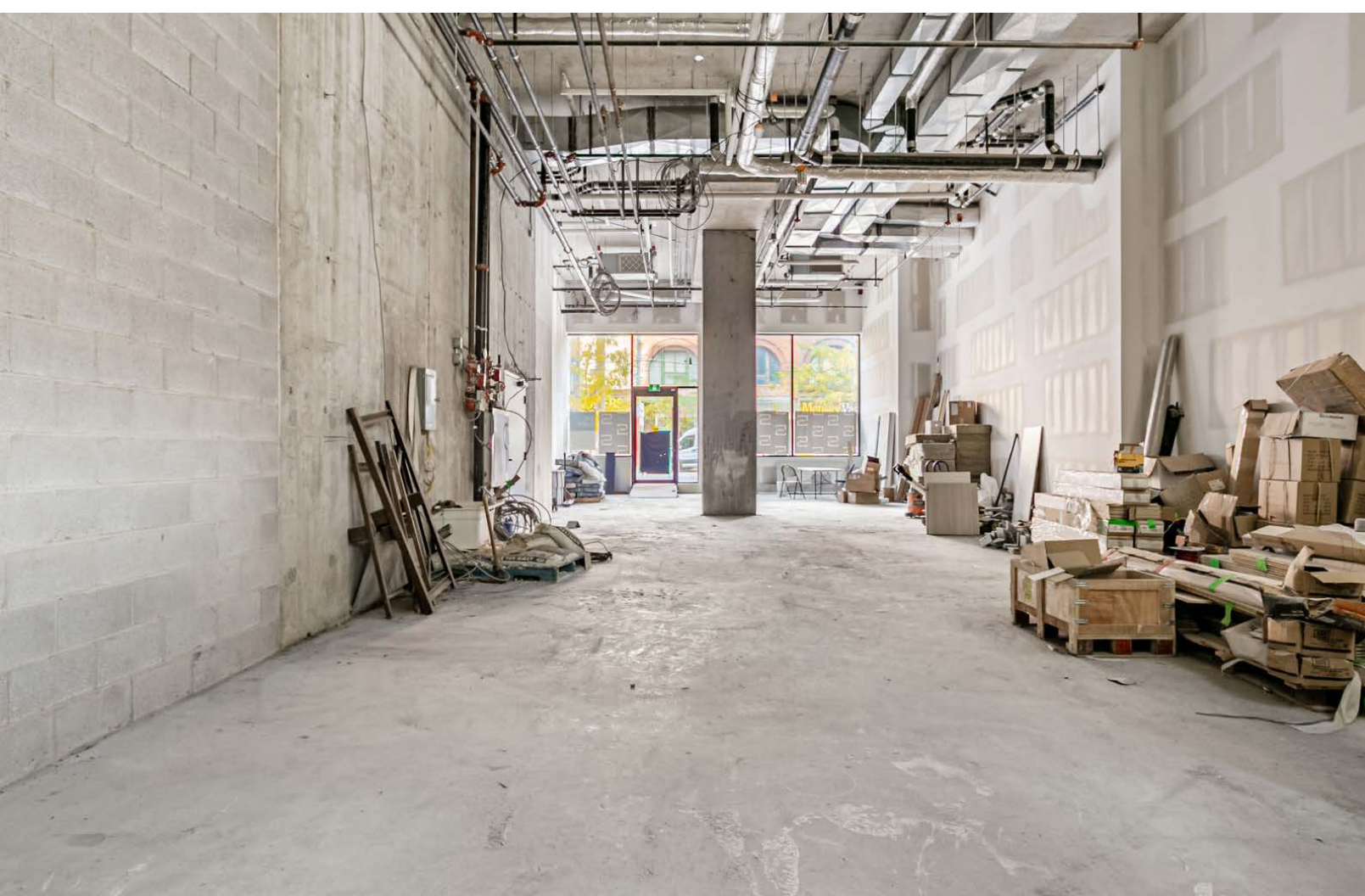
- 1181 Queen St W:** 2,832 sq. ft.
- ~~**1183 Queen St W:** 1,072 sq. ft. **LEASED!**~~
- ~~**1185 Queen St W:** 776 sq. ft. **LEASED!**~~
- ~~**1187 Queen St W:** 1,005 sq. ft. **LEASED!**~~
- ~~**1189 Queen St W:** 1,127 sq. ft. **LEASED!**~~

Net Rent: Please contact listing agents
TMI: \$22.50 per sq. ft.
Available: Immediately

Property Highlights

- Double-height facade with floor-to-ceiling windows
- Patio potential
- Incredible West Queen West location directly on the 501 Queen street-car line
- Directly across the street from the The Gladstone Hotel
- Other neighbouring retailers and traffic drivers include Cold Tea, The Drake Hotel, Metro, FreshCo and Starbucks.





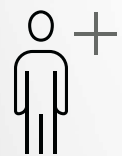
THE LOCATION

WEST QUEEN WEST

1181 Queen Street West is located in the heart of West Queen West, known as Toronto's creative heart and home to hundreds of restaurants, bars, independent fashion retailers, vintage stores and boutique hotels. Anchored by nightlife and cultural destinations such as the Gladstone and The Drake hotels, West Queen West is one of Toronto's most vibrant and popular retail strips. Favourite local spots include Bar Poet, Death & Taxes, Hello 123, The Good Son and The Dog & Bear Pub.



56,029
Population



8.5%
Population Change
(2022-2027)



\$107,253
Avg. Household Income

*Within 1km of the Subject Property



1181

QUEEN STREET WEST

Advisory Team

Arlin Markowitz*

Executive Vice President
416 815 2374
arlin.markowitz@cbre.com

Alex Edmison*

Senior Vice President
416 874 7266
alex.edmison@cbre.com

Jackson Turner**

Senior Vice President
416 815 2394
jackson.turner@cbre.com

Emily Everett*

Sales Associate
647 943 4185
emily.everett@cbre.com

*Sales Representative **Broker



CBRE

This disclaimer shall apply to CBRE Limited, Real Estate Brokerage, and to all other divisions of the Corporation; to include all employees and independent contractors ("CBRE"). The information set out herein, including, without limitation, any projections, images, opinions, assumptions and estimates obtained from third parties (the "Information") has not been verified by CBRE, and CBRE does not represent, warrant or guarantee the accuracy, correctness and completeness of the Information. CBRE does not accept or assume any responsibility or liability, direct or consequential, for the Information or the recipient's reliance upon the Information. The recipient of the Information should take such steps as the recipient may deem necessary to verify the Information prior to placing any reliance upon the Information. The Information may change and any property described in the Information may be withdrawn from the market at any time without notice or obligation to the recipient from CBRE. CBRE and the CBRE logo are the service marks of CBRE Limited and/or its affiliated or related companies in other countries. All other marks displayed on this document are the property of their respective owners. All Rights Reserved.