

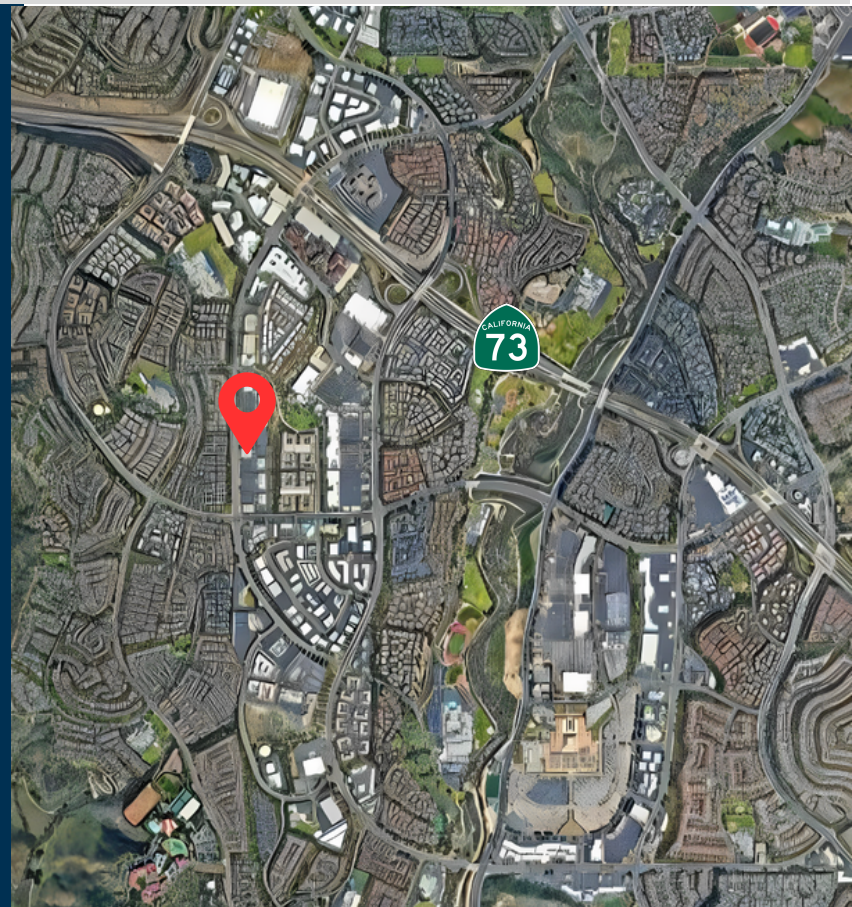
26800 Aliso Viejo Pkwy, CA 92656



## PROPERTY FEATURES

- Low-Rise Building
- Ample, Free Parking
- Access to 73 Toll Road
- Located in Central Aliso Viejo
- Proactive and Responsive Landlord
- Available Immediately

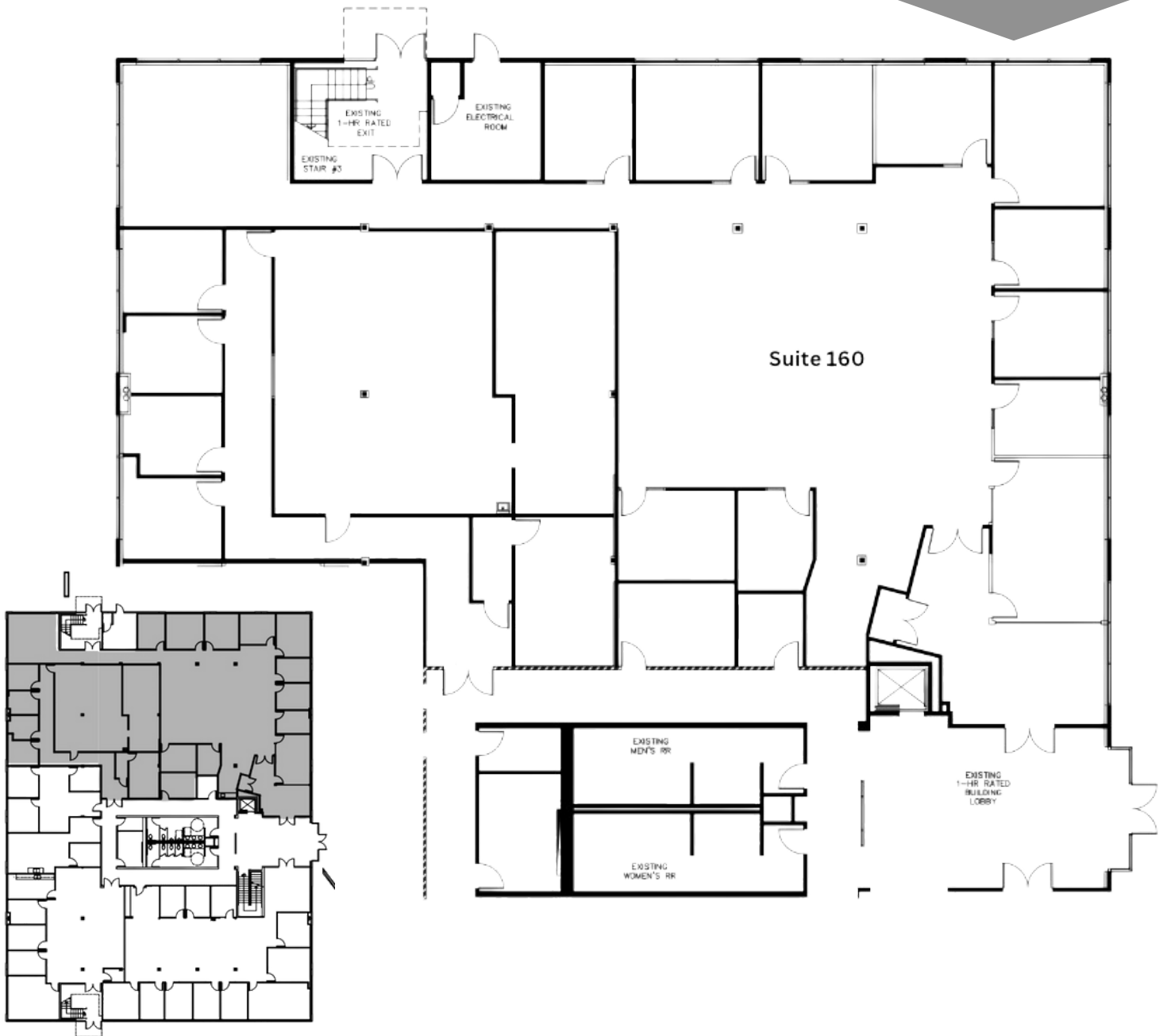
Suite	RSF	LEASE RATE
160	9,761	\$1.75 PSF, NNN
150	4,908	\$1.75 PSF, NNN



\*\*\*Operating expenses are +/- \$0.90 PSF for an FSG equivalent.\*\*\*

26800 Aliso Viejo Pkwy,  
CA 92656

9,761 SF  
\$1.75 SF/NNN



Exclusively  
Listed By:

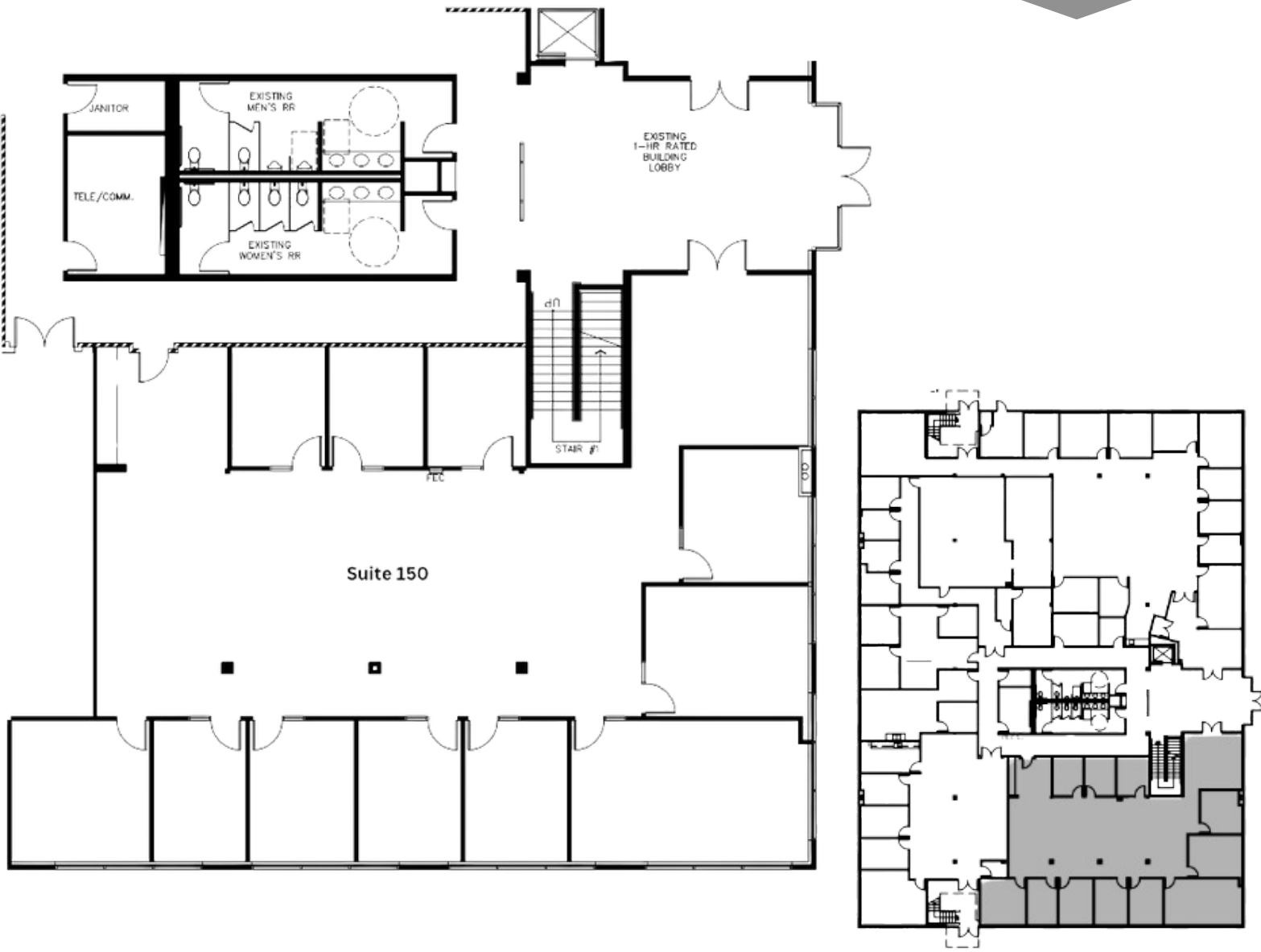
**Rob Rader**  
President  
949.500.9391  
rob.rader@TopsideRE.com  
License # 01373045

**Mac Mace**  
Director  
949.922.9889  
mac.mace@TopsideRE.com  
License # 01956808



# 26800 Aliso Viejo PKWY, CA 92656

4,908 SF  
\$1.75 SF/NNN



Exclusively  
Listed By:

**Rob Rader**  
President  
949.500.9391  
rob.rader@TopsideRE.com  
License # 01373045

**Mac Mace**  
Director  
949.922.9889  
mac.mace@TopsideRE.com  
License # 01956808



# Topside

REAL ESTATE

2091 San Joaquin Hills, Newport  
Beach, CA, 92660  
TopsideRE.com  
949-500-9391

## OUR TEAM



### **ROB RADER**

PRESIDENT  
949.500.9391

[rob.rader@TopsideRE.com](mailto:rob.rader@TopsideRE.com)

License # 01373045



### **MAC MACE**

DIRECTOR  
949.922.9889

[mac.mace@TopsideRE.com](mailto:mac.mace@TopsideRE.com)

License # 01956808

*Disclaimer: While we believe all information to be accurate, buyer is responsible to verify all information and complete their own due diligence.*