

PRESTIGE 2ND FLOOR SPACE (4,239 SQ. FT.) FOR LEASE

Social Distance in Prime Willow Glen Building with Private Offices

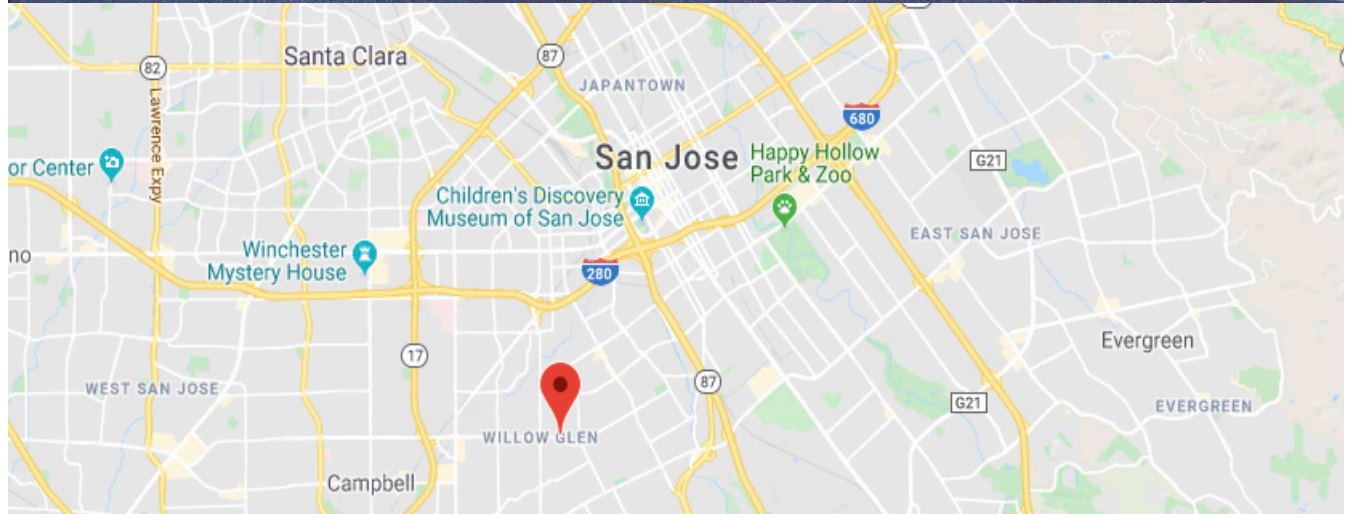
www.1494hamiltonway.com

California Partners, Inc.

Commercial Real
Estate Brokerage
www.cpi-re.com

PROPERTY FEATURES

- Prime Willow Glen Identity Building
- Suite 200 - 4,239 Square Feet @ \$3.50/SF/Mo ~ Full Service
- Plug and Play - Fully Furnished & Ready to Go
- Ideal Floor Plan w/ Private Bathrooms for Social Distancing
- 7 Private Offices, Reception Area, Private Bathrooms
- Work Areas with Cubicles & Kitchenette
- Upgraded HVAC Filters and Regular High Touch Surface Disinfecting
- Blends Traditional Office with Modern Design
- Building and Monument Signage
- Abundant Parking
- Close to all Major Freeways
- Near San Jose Mineta International Airport
- Walking distance to Lincoln Ave's Shops, Spas, and Restaurants
- Near eBay, Adobe, Amazon, and Google offices
- On-Site Professional Property Management



Michael Passarelli (650) 670-6776

DRE # 01073382 Michael@cpi-re.com

Kirk McKinney (415) 254-2517

DRE # 01514824 Kirk@cpi-re.com

PRESTIGE 2ND FLOOR SPACE (4,239 SQ. FT.) FOR LEASE

Social Distance in Prime Willow Glen Building with Private Offices

www.1494hamiltonway.com

California Partners, Inc.

Commercial Real Estate Brokerage
www.cpi-re.com



Michael Passarelli (650) 670-6776

DRE # 01073382 Michael@cpi-re.com

Kirk McKinney (415) 254-2517

DRE # 01514824 Kirk@cpi-re.com

PRESTIGE 2ND FLOOR SPACE (4,239 SQ. FT.) FOR LEASE

California Partners, Inc.

Social Distance in Prime Willow Glen Building with Private Offices

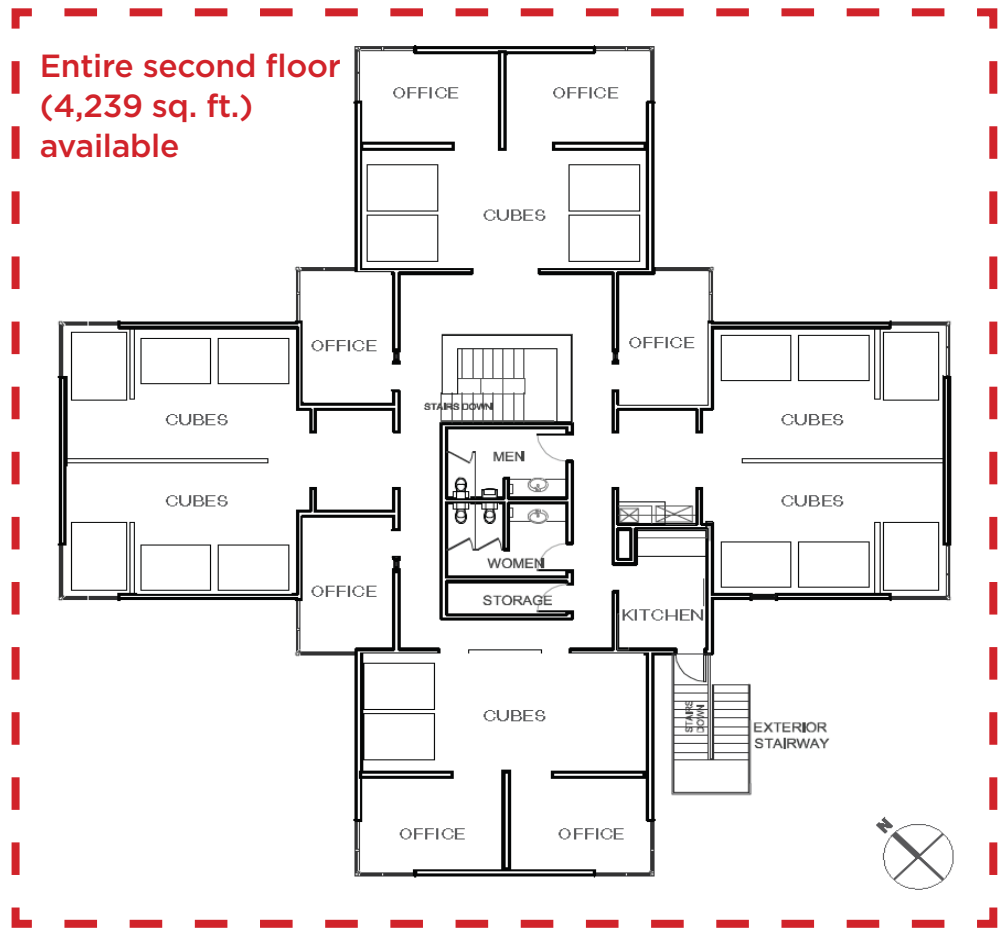
Commercial Real Estate Brokerage
www.cpi-re.com

www.1494hamiltonway.com

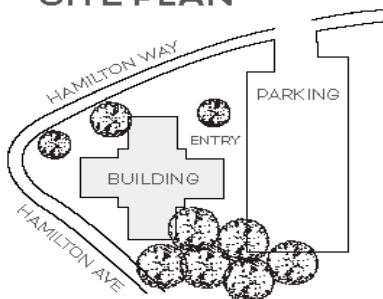
FIRST FLOOR PLAN



SECOND FLOOR PLAN



SITE PLAN



Michael Passarelli (650) 670-6776 Kirk McKinney (415) 254-2517
DRE # 01073382 Michael@cpi-re.com DRE # 01514824 Kirk@cpi-re.com

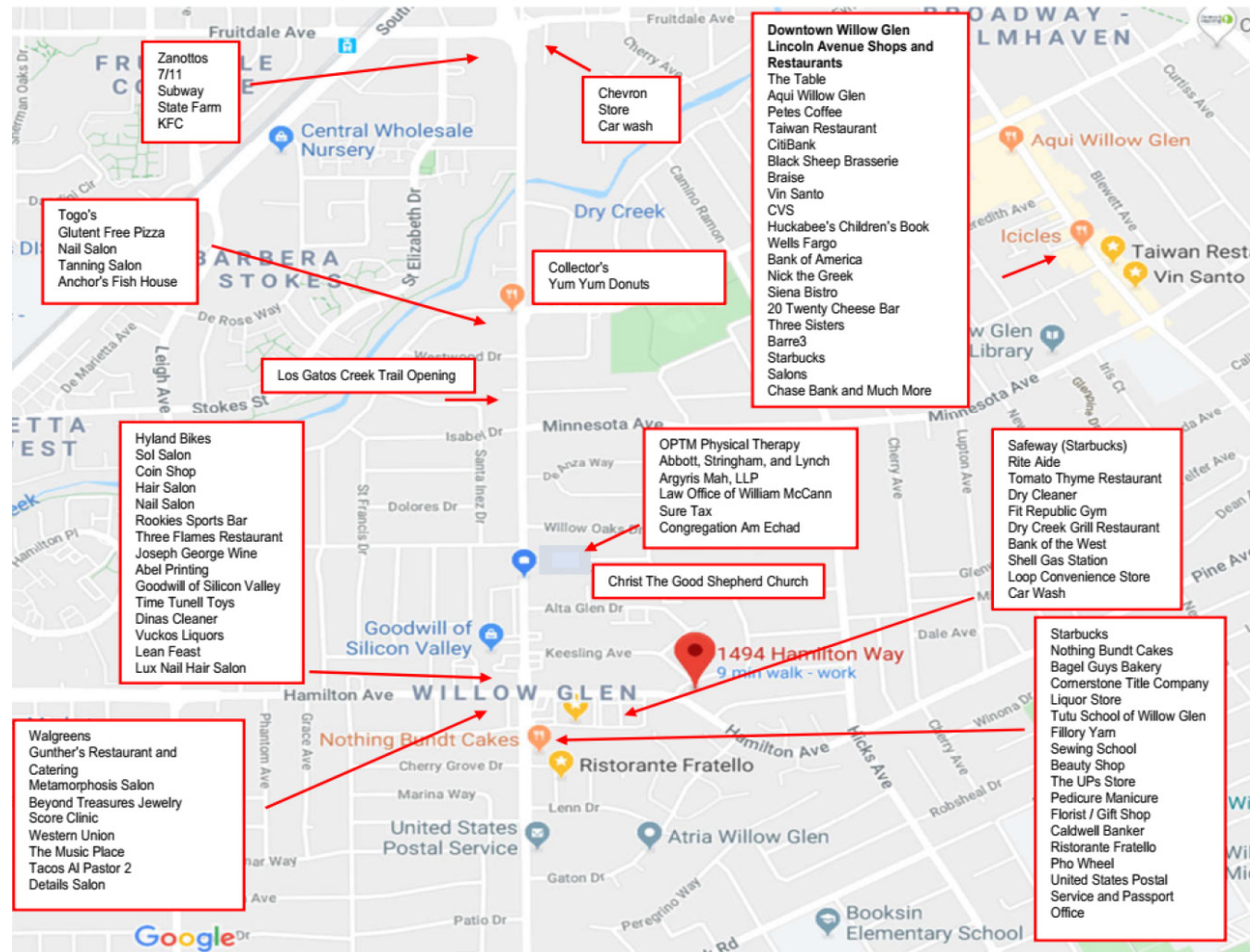
PRESTIGE 2ND FLOOR SPACE (4,239 SQ. FT.) FOR LEASE

California Partners, Inc.

Social Distance in Prime Willow Glen Building with Private Offices

Commercial Real Estate Brokerage
www.cpi-re.com

www.1494hamiltonway.com



Michael Passarelli (650) 670-6776

Kirk McKinney (415) 254-2517

DRE # 01073382 Michael@cpi-re.com

DRE # 01514824 Kirk@cpi-re.com