



PROLOGIS

COUNTY LINE 600

3740 W 104TH ST. #20
HIALEAH, FL 33018

**9,000 SF SUBLEASE
SUBLEASE FOR 12 MONTHS OR
UP TO & THROUGH 10/31/2028**

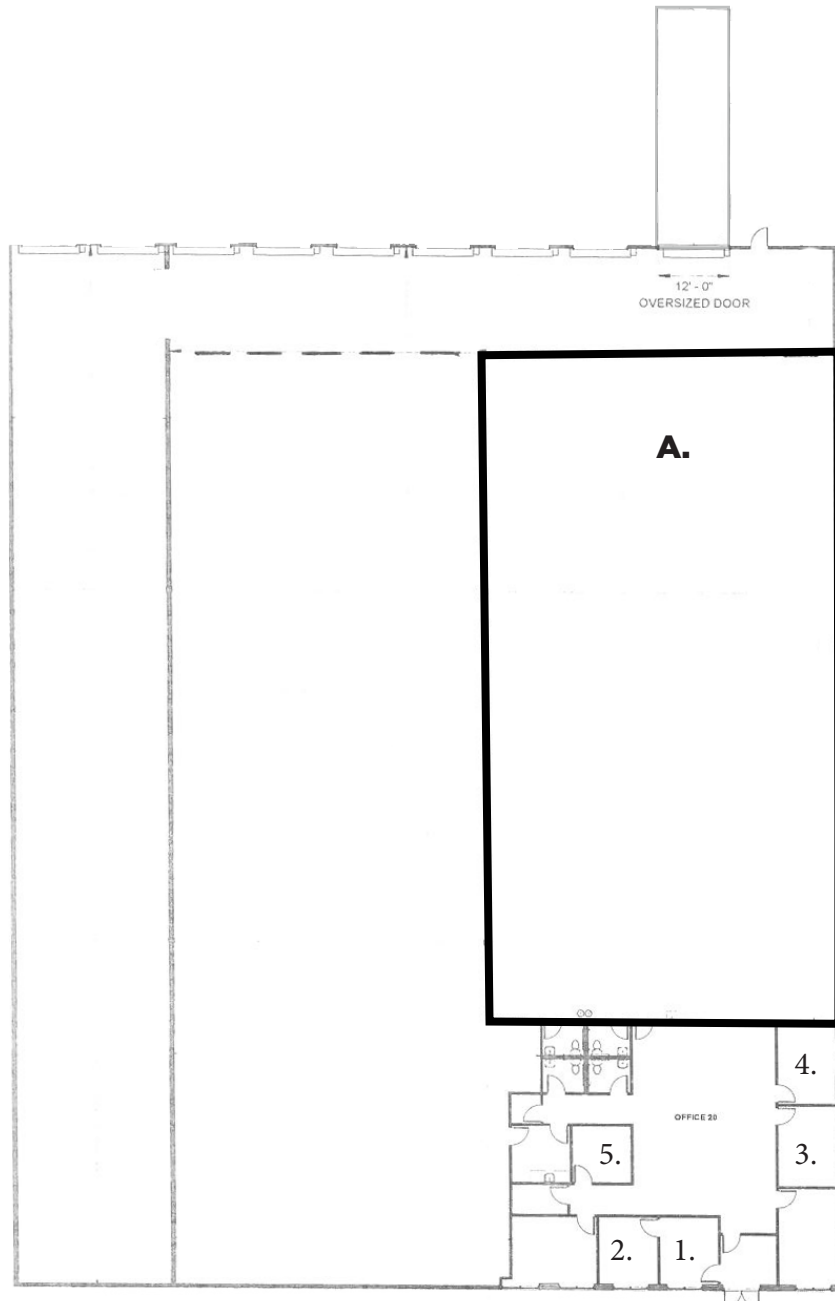


FLOOR PLAN

9,000 SF
\$18.00/
PSF MG

SUBLEASE AVAILABLE

- End-cap unit with 1 - 4 docks available
- Access to oversized ramp
- From 1 to 5 offices available
- 32' clear height
- Rate includes all maintenance & utilities: Internet, Power, Waste, Water, Sewage, Cameras, Alarms, etc.
- Proposed amenities within 1 mile include Publix, HomeGoods, Burlington, Aldi, TD Bank, Harbor Freight, Chick-Fil-A and more

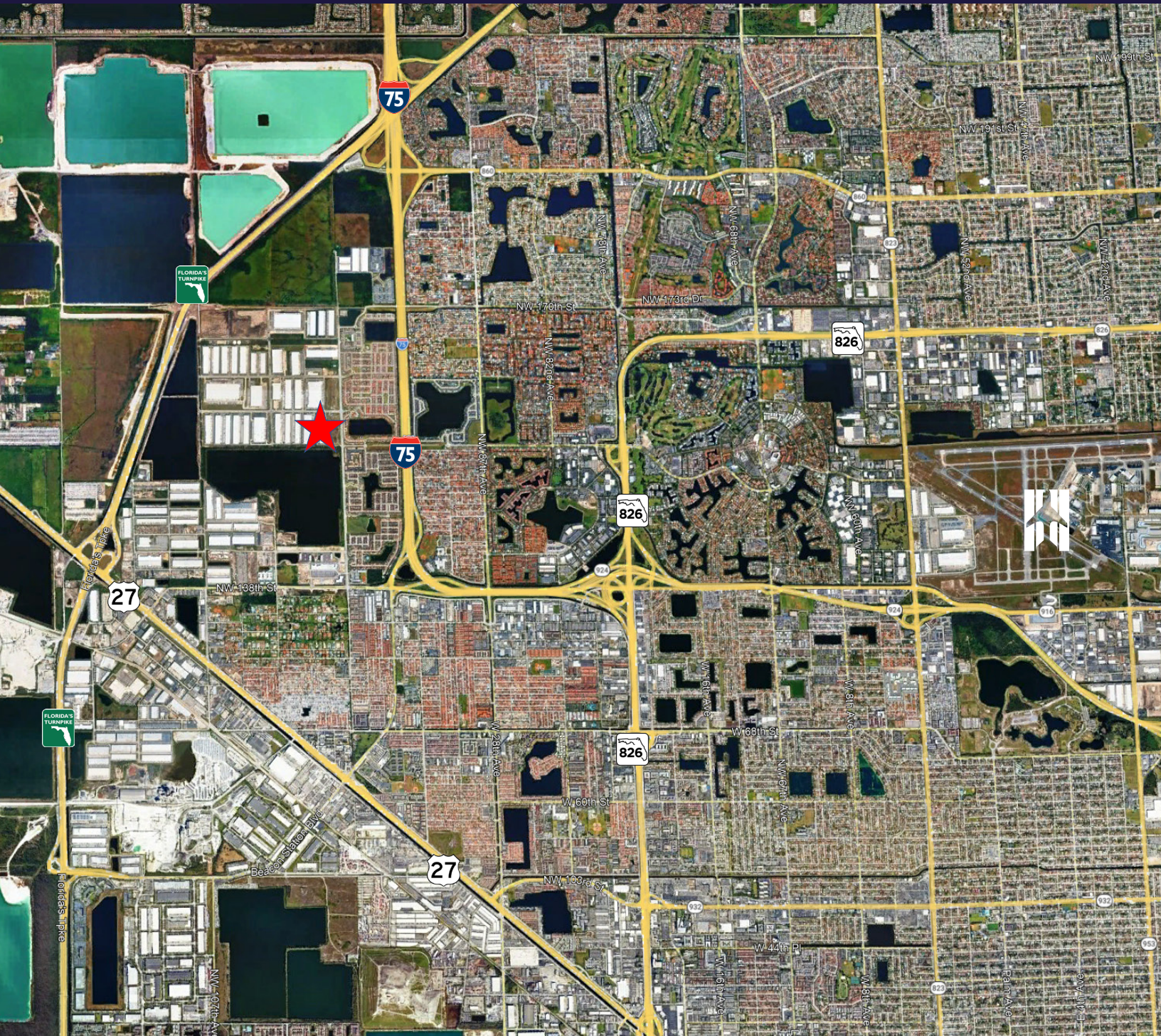


AERIAL VIEW

9,000 SF
**\$18.00/
PSF MG**

SUBLEASE AVAILABLE

- Sublease for 12 months or up to & through October 31, 2028
- Prime access to Florida's Turnpike and US-27 exchange
- Located minutes to I-75
- 12.7 miles to Miami International Airport
- 138,500 ADTC at I-75 and NW 154th Terrace
- Hialeah is an industrial city known as one of the largest areas in Miami Dade County for employment and economic development





For more information,
please contact:

Matthew A. Bittel, SIOR

Managing Director

+1 305 804 1104

matthew.bittel@cushwake.com

Stuart Gordon, SIOR

Executive Managing Director

+1 305 333 2919

stuart.gordon@cushwake.com

Cushman & Wakefield US, Inc.

9960 NW 116th Way

Suite 2

Medley, FL 33178

cushmanwakefield.com

©2026 Cushman & Wakefield. All rights reserved. The information contained in this communication is strictly confidential. This information has been obtained from sources believed to be reliable but has not been verified. NO WARRANTY OR REPRESENTATION, EXPRESS OR IMPLIED, IS MADE AS TO THE CONDITION OF THE PROPERTY (OR PROPERTIES) REFERENCED HEREIN OR AS TO THE ACCURACY OR COMPLETENESS OF THE INFORMATION CONTAINED HEREIN, AND SAME IS SUBMITTED SUBJECT TO ERRORS, OMISSIONS, CHANGE OF PRICE, RENTAL OR OTHER CONDITIONS, WITHDRAWAL WITHOUT NOTICE, AND TO ANY SPECIAL LISTING CONDITIONS IMPOSED BY THE PROPERTY OWNER(S). ANY PROJECTIONS, OPINIONS OR ESTIMATES ARE SUBJECT TO UNCERTAINTY AND DO NOT SIGNIFY CURRENT OR FUTURE PROPERTY PERFORMANCE.

