

ALL PROPERTIES ARE OWNER MANAGED AND STRATEGICALLY LOCATED MINUTES FROM A MAJOR INTERSTATE IN THE EAST BAY AND CENTRAL VALLEY.

Right Space. Best Place.

www.cranbrookgroup.com

THE CROSSROADS AT HACIENDA

[5980 & 5990 Stoneridge Drive, Pleasanton, CA 94588](#)

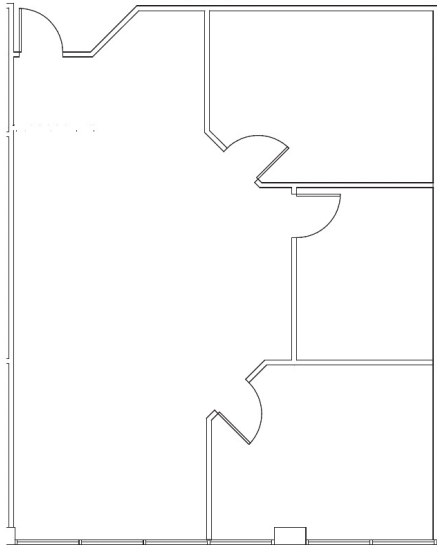


SEE & LEARN MORE ...

Go to cranbrookgroup.com to view more photos and get more information about The Crossroads at Hacienda and our company!

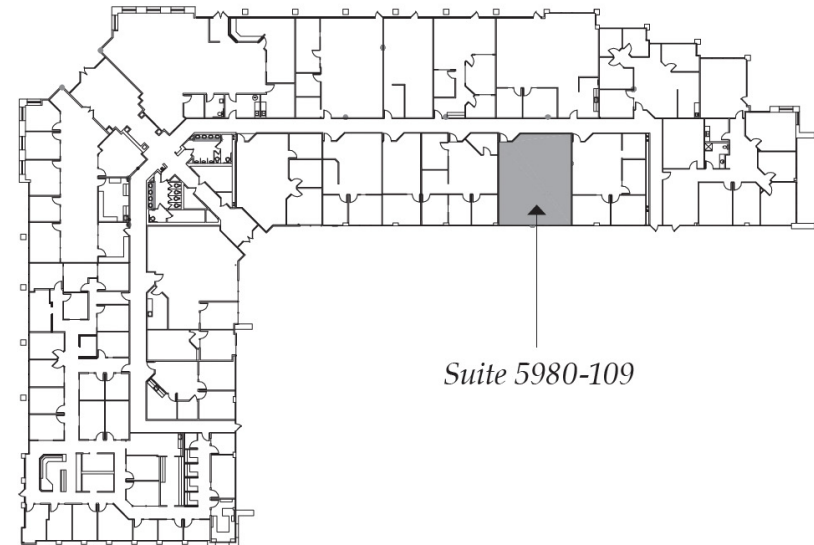
SUITE 5980-109

± 1,232 RENTABLE SQUARE FEET



FIRST FLOOR KEY PLAN

AVAILABLE SUITE IN GRAY BELOW



Suite 5980-109

For more information, please contact:

Adam Ebner

Listing Broker, CBRE
(510) 697-3331 | adam.ebner@cbre.com
DRE #01213890



Chris Wight

Director of Leasing & Brokerage
O: (209) 549-4960 x 117 | C: (209) 495-1383
cwight@cranbrookgroup.com | DRE #00935049