

Retail/Office

For Lease



171

EAST LIBERTY STREET
Toronto, ON



\$1.30 PSF Per Year Selling Commission



Property summary

Set in the heart of one of Toronto’s fastest-growing neighbourhoods, The Liberty Market Building offers retailers the opportunity to capitalize on a steady stream of local and visiting clientele. This location provides a great opportunity to take advantage of the neighbourhood’s local demographic of young urban professionals and the building’s close proximity to downtown.

With more than 100,000 SF of main level retail space, The Liberty Market Building, a neighbourhood landmark, provides a unique retail mix. Featuring prominent exposure, beautiful character space, and over 50 office tenants, The Liberty Market Building offers a one-of-a-kind venue.

Highlights

- Renovated mixed-use campus in the heart of Liberty Village
- Total complex comprised of over 295,000 SF of office and retail space
- Ceiling heights of 15 FT
- Tenants include LOCAL Public Eatery, BMO, Tim Hortons, Home Hardware, Brazen Head, and Bulk Barn
- Excellent TTC and GO Station access
- Ample public parking on site
- Green ‘P’ surface parking immediately west of the property

Details

Retail

Unit 111: 970 SF
Unit 117: 1,130 SF
Available: Immediately
Term: 5 - 10 Years
Net Rent: Negotiable
Additional Rent: \$21.87 PSF (EST. 2024)

Office

Unit 207: 4,805 SF Immediately
Unit 211: 1,448 SF Immediately
Unit 219: 1,425 SF Immediately
Unit 221: 960 SF Immediately
Unit 232: 12,500 SF Immediately
Unit 254: 1,035 SF Immediately
Unit 263: 1,610 SF Immediately
Unit 264: 1,035 SF Immediately

Available

Office

Unit 266: 1,035 SF Immediately
Unit 269: 1,320 SF Immediately
Unit 272: 920 SF Immediately
Unit 277: 1,200 SF Immediately
Unit 305: 2,036 SF Immediately
Unit 324: 4,740 SF Immediately
Unit 330: 3,660 SF Immediately

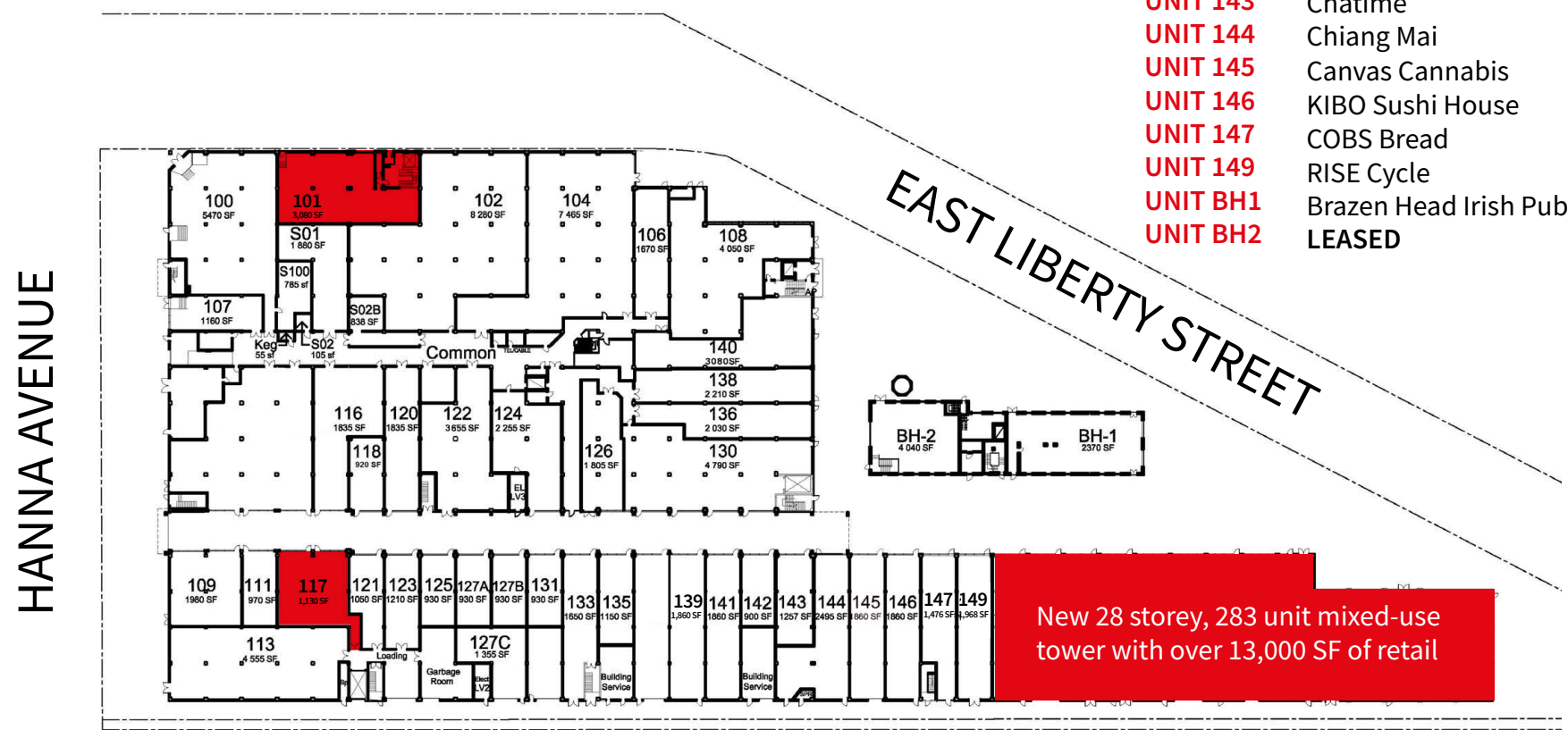
Available

Net Rent: Call Pointmark to discuss
Additional Rent: \$21.87 PSF (EST. 2024)
Hydro: Separately metered
Term: Flexible
Commission: **\$2.00 PSF** per annum selling commission (subject to terms and conditions)



Site map

UNIT 100	LOCAL Public Eatery	UNIT 116	Salon Tocci	UNIT 127B	Pizzaville
UNIT 101	Available	UNIT 117	Available	UNIT 130	COTY
UNIT 102	Village Family Health	UNIT 118	180 Smoke	UNIT 131	Island Caribbean
UNIT 104	Dollarama	UNIT 120	Animal Hospital	UNIT 133	Body In Tune
UNIT 106	Dollarama	UNIT 121	LEASED	UNIT 135	Carnabys Jewellers
UNIT 107	Merci Mon Ami	UNIT 122	Heartless Ink	UNIT 136	See & Be Seen Eyecare
UNIT 108	Bank of Montreal	UNIT 123	Demo Soap Studio	UNIT 137A	Penguin Pick Up
UNIT 109	Tim Hortons	UNIT 124	F45 Liberty Village	UNIT 137B	Luxe Destination Weddings
UNIT 110	Bulk Barn	UNIT 125	3 Apples High	UNIT 138	Portrait Dental
UNIT 111	Toronto Sports Performance	UNIT 126	Oxygen Yoga	UNIT 139	Luxe Travel Company
UNIT 113	Home Hardware	UNIT 127A	Aloette	UNIT 140	LEASED
				UNIT 141	Cures Studio
				UNIT 142	Luxe Tanning and Swimwear
				UNIT 143	Chatime
				UNIT 144	Chiang Mai
				UNIT 145	Canvas Cannabis
				UNIT 146	KIBO Sushi House
				UNIT 147	COBS Bread
				UNIT 149	RISE Cycle
				UNIT BH1	Brazen Head Irish Pub
				UNIT BH2	LEASED

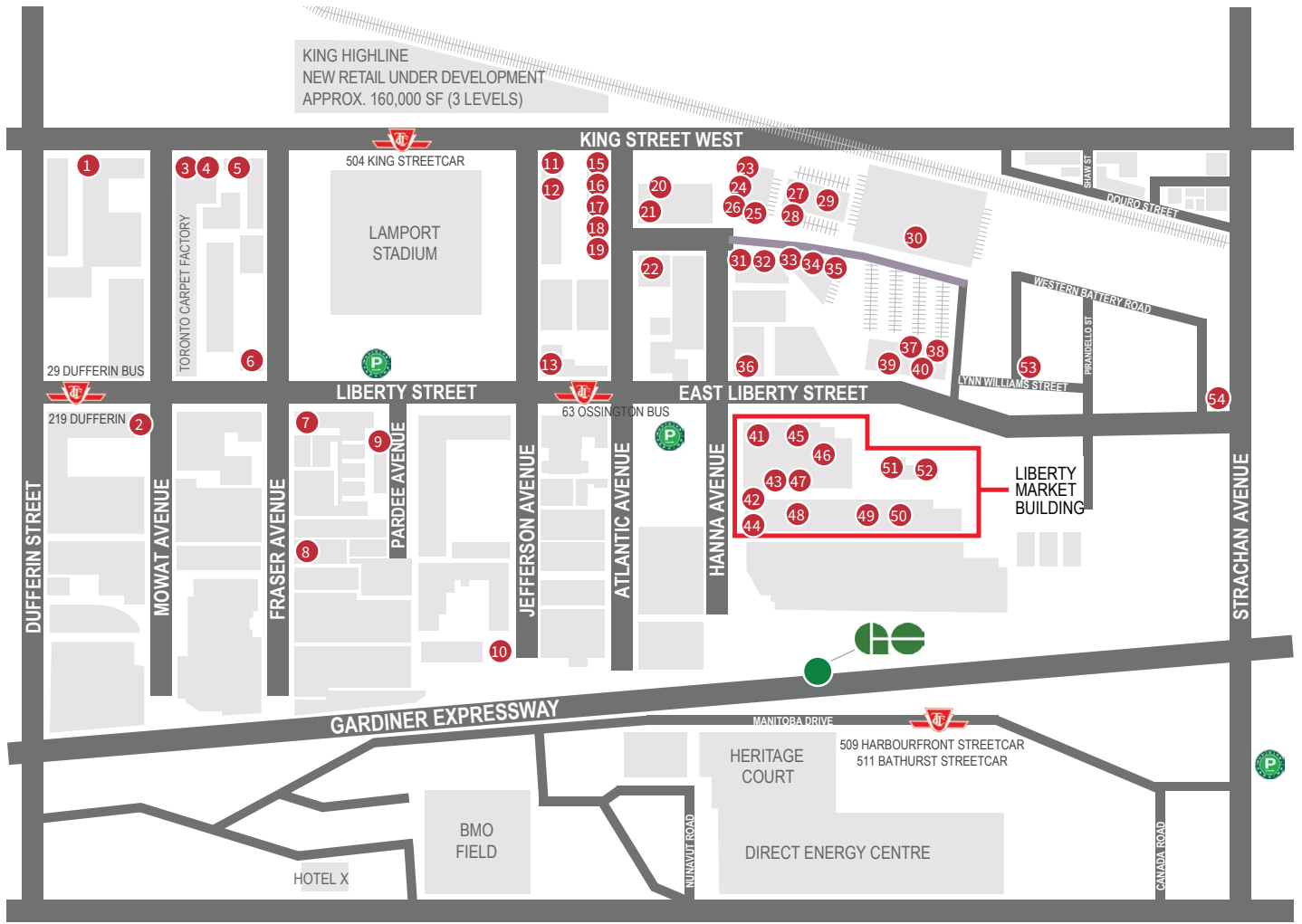


New 28 storey, 283 unit mixed-use tower with over 13,000 SF of retail



Retail Map

- 1 Subway
- 2 Forty2 Supper Club
- 3 Shoeless Joe's
- 4 Louie Craft Coffee
- 5 Caffino Ristorante
- 6 School (Restaurant)
- 7 Maro Supper Club
- 8 Joe Rockheads Climbing Gym
- 9 Brodfloor
- 10 Public Storage
- 11 Liberty Village Rotisserie Grill
- 12 Mad Batter Bakers
- 13 Big Rock Brewery
- 14 Liberty Village Market & Café
- 15 Live. Organic Food Bar
- 16 Booster Juice
- 17 Fat Bastard Burrito
- 18 Saigon Bistro
- 19 Burger Drops
- 20 Goodlife Fitness
- 21 West Elm
- 22 The Craft Brasserie & Grille
- 23 Mildred's Temple Kitchen
- 24 Freshii
- 25 Starbucks Coffee
- 26 LCBO
- 27 Kitchen Stuff Plus
- 28 Harvey's
- 29 Global Pet Foods
- 30 Metro Grocery Store
- 31 RBC Bank
- 32 Pearle Vision



- | | | |
|-----------------------|------------------------|-----------------|
| 33 Running Room | 41 Local Public Eatery | 49 Chiang Mai |
| 34 Rogers | 42 Tim Hortons | 50 KIBO Sushi |
| 35 TD Bank | 43 Bulk Barn | 51 Popeyes |
| 36 Balzac's Coffee | 44 Home Hardware | 52 Brazen Head |
| 37 Panago Pizza | 45 Dollarama | 53 ONO Poke Bar |
| 38 CIBC Bank | 46 Bank of Montreal | 54 Wendy's |
| 39 William's Landing | 47 F45 | |
| 40 Aroma Espresso Bar | 48 Aloette | |

Liberty Village

LIBERTY VILLAGE

Liberty Village is located between Strachan Avenue and Dufferin Street lining the Gardiner Expressway and King Street West. The neighbourhood is one of Toronto's fastest growing communities and has turned into a thriving mixed-use community that caters to the increasing number of residents in the area. With over two and a half million square feet of office space, the node has become a destination point for a variety of industries.



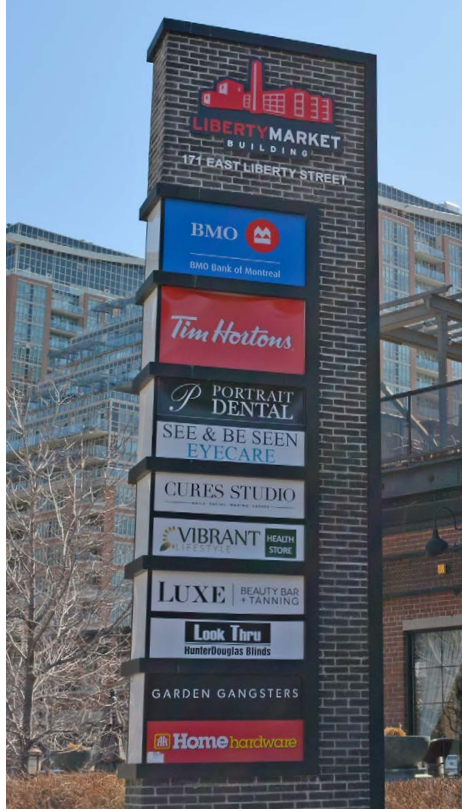
History

The neighbourhood's history mainly lies with its strong industrial ties. In 1858, Liberty Village became the site of Toronto's Industrial Exhibition that later moved south and is now known as the Canadian National Exhibition. In the 1880's the province built a prison where the inmates were put to work to generate profits for the government. In the years following, the heavily concentrated industrial area became munitions factories during the world wars to support the country's war efforts abroad.







Transportation

The Liberty Market Building enjoys public transit from the King Street West streetcar (504), Ossington bus line (63, 63A and 316), and the Exhibition Place GO Station for commuters. The Dufferin Street bus line (29, 29A, 29D and 329) is also easily accessible to those who work in Liberty Village.



Demographics

	43,847 POPULATION		97 WALK SCORE
	\$128,856 AVERAGE HH INCOME		100 TRANSIT SCORE

Within 1KM | Statistics Canada, 2022





RETAIL

Brandon Gorman**

Executive Vice President

+1 416 855 0907

brandon.gorman@am.jll.com

Graham Smith*

Executive Vice President

+1 416 855 0914

graham.smith@am.jll.com

Matthew Marshall*

Senior Sales Associate

+1 416 238 9925

matthew.marshall@am.jll.com

OFFICE

Jay Chisholm*

Broker

+1 416 234 9949

jchisholm@pointmark.ca



Although information has been obtained from sources deemed reliable, neither Owner nor JLL makes any guarantees, warranties or representations, express or implied, as to the completeness or accuracy as to the information contained herein. Any projections, opinions, assumptions or estimates used are for example only. There may be differences between projected and actual results, and those differences may be material. The Property may be withdrawn without notice. Neither Owner nor JLL accepts any liability for any loss or damage suffered by any party resulting from reliance on this information. If the recipient of this information has signed a confidentiality agreement regarding this matter, this information is subject to the terms of that agreement. ©2024 Jones Lang LaSalle IP, Inc. All rights reserved. **Broker. *Sales Representative.