

FOR LEASE

THE CASCARA

1260 10th Avenue, Salmon Arm, BC

Prime Retail Opportunities on the Ground Floor of a
Newly Constructed Six-Storey Apartment Complex
Centrally Located in Salmon Arm



Barb Burrows

604.945.5933

barb.burrows@macdonaldcommercial.com

Macdonald
COMMERCIAL

WESTURBAN
DEVELOPMENTS

THE CASCARA

Salmon Arm, BC

OPPORTUNITY

Prime retail space in a thriving midtown neighbourhood in Salmon Arm with flexible zoning suitable for retail, office, gyms and more. Located in the hub of Salmon Arm with ideal street visibility, walkability and easy access to public transport.

AREA

The fast-growing community of Salmon Arm is the regional business, service and cultural centre of the Shuswap and sits at the gateway to the popular North Okanagan, midway between Vancouver and Calgary. Salmon Arm is strategically situated on the key transportation crossroads of Hwy 1 and 97B. The city has a primary retail trade area of approx. 15,000 people and a secondary trade area of 35,000 people.

LOCATION

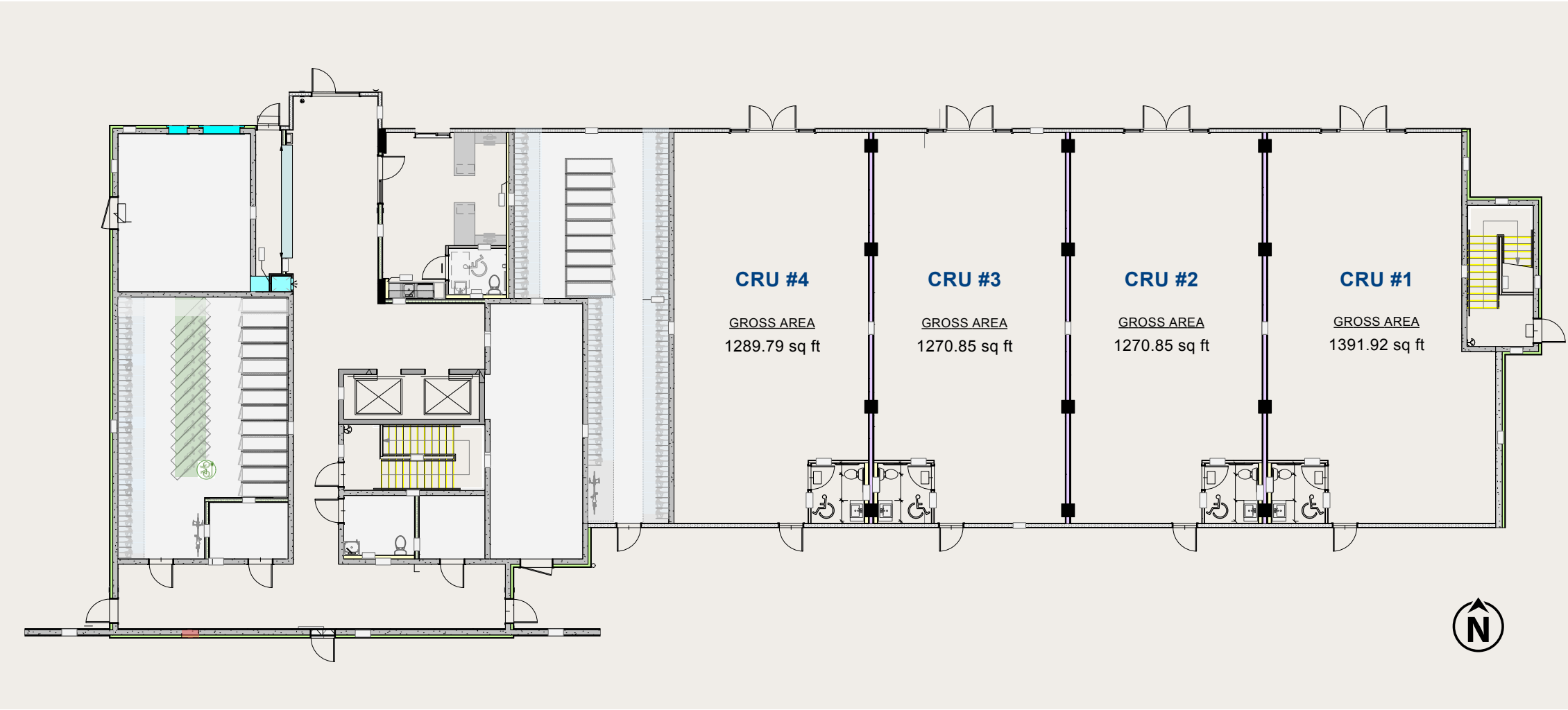
Centrally located on 10th Avenue SW, just off the Trans-Canada Highway and directly across from the Mall at Piccadilly, which is the dominant shopping centre in the greater Salmon Arm region with 35 stores, including anchors Save-On-Foods, Canadian Tire, Sport Check and Shoppers Drug Mart.



PROPERTY INFORMATION

The Cascara is a six-storey mixed-use building with 140 residential rental suites and main floor commercial space of approx. 5,346 sf, including up to four CRUs.

| | |
|--|--|
| BASE RENT Contact Listing Agent | PARKING 30 surface commercial stalls |
| ADDITIONAL RENT \$7.00 psf (2025 estimate) | AVAILABLE September 2025 |
| ZONING C-2 | |



RENDERED VISUALIZATION



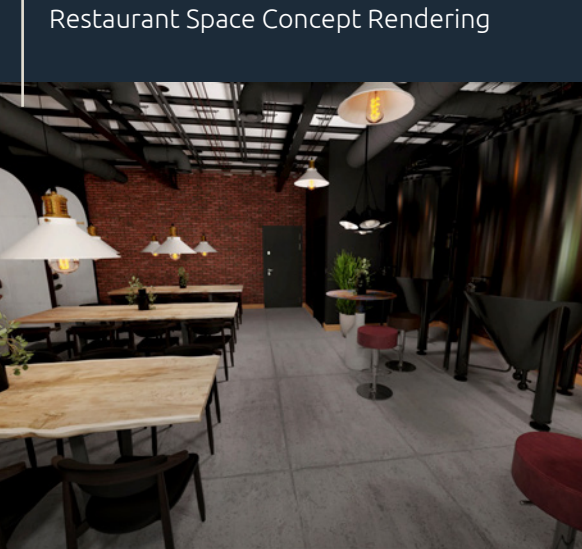
Retail Space Concept Rendering



Office Space Concept Rendering



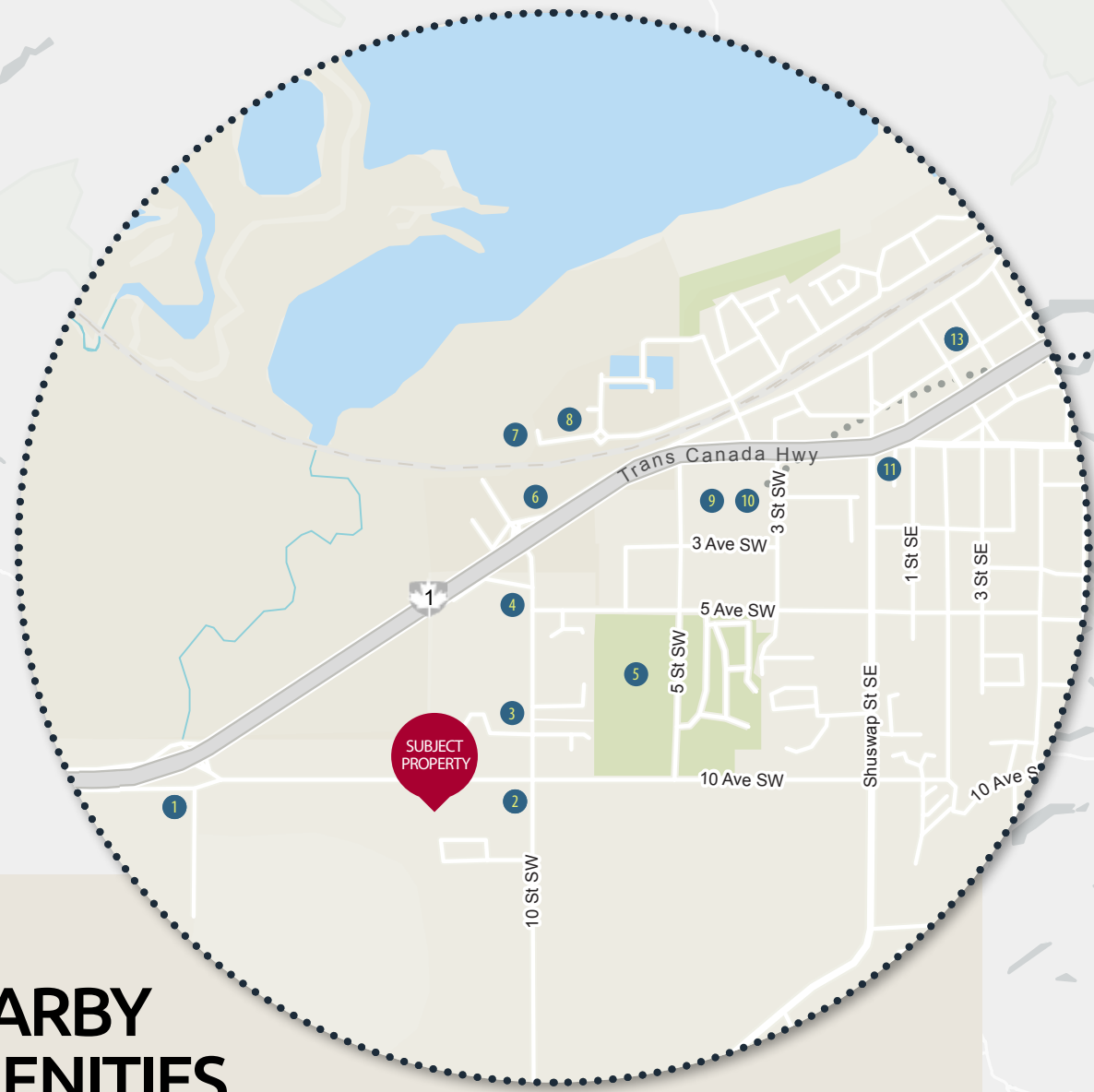
Gym Space Concept Rendering



Restaurant Space Concept Rendering



Daycare Space Concept Rendering



**TRADE AREA
DEMOGRAPHICS WITHIN
A 20KM RADIUS**

Estimated Population

2.7M

Estimated Households

988K

Average Household Income

\$102K

Median Age

41

Source: Statistics Canada

**NEARBY
AMENITIES**

- | | |
|---|---|
| 1. PEDI Passion Spa | 6. Salmon Arm Waterslides |
| 2. Sedo's Old Fashioned Butcher Shop and Deli | 7. Peter Jannink Nature Park |
| 3. The Mall at Piccadilly | 8. Crown 'N Anchor Public House & Grill |
| * Save-On-Foods | 9. Brad's No-Frills |
| * Canadian Tire | 10. PJ's Restaurant |
| * Sport Chek | 11. Barley Station Brewpub |
| * Shoppers Drug Mart | 12. Shuswap Pie Company |
| 4. Shuswap Veterinary Clinic | 13. Prestige Harbourfront Resort |
| 5. Blackburn Park | |

Kamloops

Salmon Arm

Revelstoke

Vernon

Kelowna

Vancouver



Macdonald
COMMERCIAL



Barb Burrows

604.945.5933

barb.burrows@macdonaldcommercial.com

Macdonald Commercial Real Estate Services Ltd.

1827 W 5th Ave, Vancouver, BC V6J 1P5

www.macdonaldcommercial.com

Although this information has been received from sources deemed reliable, we assume no responsibility for its accuracy, and without offering advice, make this submission subject to prior sale or lease, change in price or terms and withdrawal without notice.