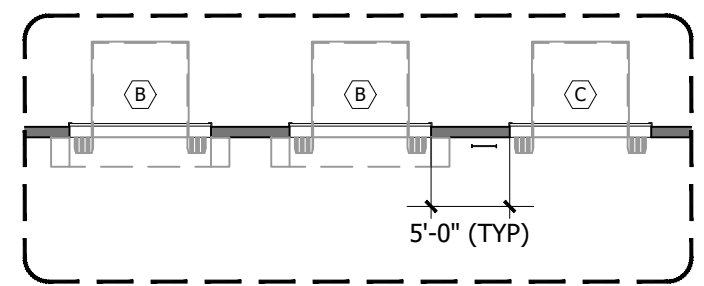


**TRUCK DOCK LEGEND**

- (A) 12'-0" W X 14'-0" H OVERHEAD DOOR - DRIVE-IN (QTY 4)
- (B) 9'-0" W X 10'-0" H OVERHEAD DOOR - DOCK HEIGHT WITH PIT LEVELER, BUMPERS, AND DOCK SEALS (QTY 6)
- (C) 9'-0" W X 10'-0" H OVERHEAD DOOR - DOCK HEIGHT WITH PIT LEVELER AND BUMPERS (QTY 2)

**BUILDING HIGHLIGHTS**

- (A) CLEAR HEIGHT AT WAREHOUSE: ±25'-5"
- (B) SPEED BAY CLEAR HEIGHT: ±23'-10"
- (C) BUILDING ELECTRICAL
- (D) FIRE RISER
- SPRINKLERED THROUGHOUT



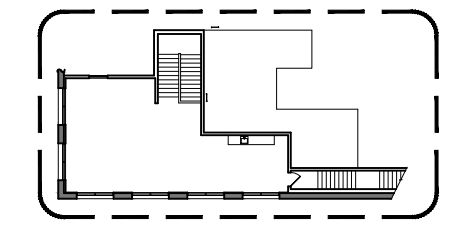
TYPICAL AT TRUCK DOCKS

N  
SCALE: 1:500

**CDL DESIGN**  
 INTERIOR ARCHITECTURE + SPACE PLANNING  
 12 MAULCHLY, SUITE E | CDLDESIGNGROUP.COM  
 IRVINE, CA 92618 | P: 949.679.6486

**AS-BUILT - OVERALL PLAN**

WAREHOUSE:	±66,789 SQ. FT.
1ST FLOOR OFFICE:	±2,139 SQ. FT.
2ND FLOOR OFFICE:	±1,263 SQ. FT.
<b>BUILDING TOTAL:</b>	<b>±70,191 SQ. FT.</b>



SECOND FLOOR OFFICE - SEE PAGE 4

WHILST EVERY ATTEMPT HAS BEEN MADE TO ENSURE THE ACCURACY OF THE FLOOR PLAN, MEASUREMENTS OF DOORS, WINDOWS, ROOMS, WALLS AND ANY OTHER ITEM ARE APPROXIMATE AND NO RESPONSIBILITY IS TAKEN FOR ANY ERROR, OMISSION, OR MISREPRESENTATION. PLAN LAYOUT SUBJECT TO FIELD CONDITIONS. FIELD CONDITIONS MAY DIFFER FROM PLAN AS SHOWN. ALL ROOM SIZES ARE APPROXIMATE. ALL INFORMATION REPRESENTED ON THIS DRAWING IS BELIEVED TO BE ACCURATE. THIS PLAN IS FOR ILLUSTRATIVE PURPOSES ONLY AND SHOULD BE USED AS SUCH. THIS PLAN IS NOT INTENDED FOR CONSTRUCTION PURPOSES. DO NOT SCALE DRAWINGS.

**LINK LOGISTICS**  
 10681 BUSINESS DR, UNIT 100  
 FONTANA, CA 92337  
 ±70,191 SQ. FT.  
 4/2/2025  
 PAGE 2 OF 7