

# 4900 SOUTH BROAD STREET

## THE COMMANDANT'S BUILDING



EXCLUSIVELY  
REPRESENTED BY  
THE FLYNN COMPANY

## 1,215 SF – 6,737 SF AT THE NAVY YARD AVAILABLE FOR LEASE

### PROPERTY HIGHLIGHTS



33,369 SF 3-story office building



1,215 SF – 6,737 SF, Available in Multiple Suites



High-end Historic Renovation & Existing Furniture Available



Free surface parking adjacent to the Property



Free Express Shuttles to Center City & AT&T Station (Broad Street Subway)  
and direct access to SEPTA Bus Route 17



Move-in ready suites with furniture available

MICHAEL GALLAGHER  
MGALLAGHER@FLYNNCO.COM  
215-561-6565 X 151

BRENDAN FLYNN  
BFLYNN@FLYNNCO.COM  
215-561-6565 X 152

JOSEPH NASELLI  
JNASELLI@FLYNNCO.COM  
215-561-6565 X 155

The  
Flynn  
Company

THE FLYNN COMPANY

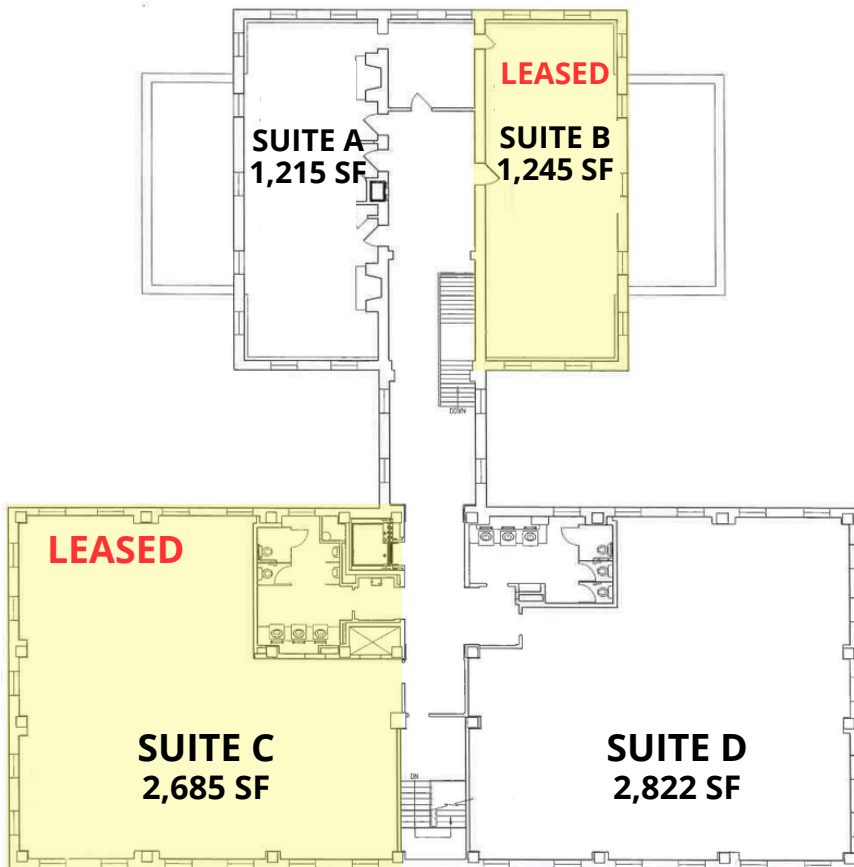
WWW.FLYNNCO.COM | 1621 WOOD STREET, PHILADELPHIA, PA 19103 | 215.561.6565

## AVAILABILITIES & FLOOR PLANS

Suite	Space Available (SF)
3rd Floor   Suite A	1,215 SF
3rd Floor   Suite D	2,822 SF
1st Floor   Suite D	2,700 SF
<b>Total Available</b>	<b>6,737 SF</b>



3rd Floor Plan





# 4900 S BROAD STREET | THE COMMANDANT'S BUILDING

6,737 SF AT THE NAVY YARD | AVAILABLE FOR LEASE



## For More Information Please Contact:

**MICHAEL GALLAGHER**  
MGALLAGHER@FLYNNCO.COM  
215-561-6565 X 151

**BRENDAN FLYNN**  
BFLYNN@FLYNNCO.COM  
215-561-6565 X 152

**JOSEPH NASELLI**  
JNASELLI@FLYNNCO.COM  
215-561-6565 X 155

### THE FLYNN COMPANY

WWW.FLYNNCO.COM | 1621 WOOD STREET, PHILADELPHIA, PA 19103 | 215.561.6565