

For Lease: Retail / Office / Restaurant

SOUTHLAND PLAZA

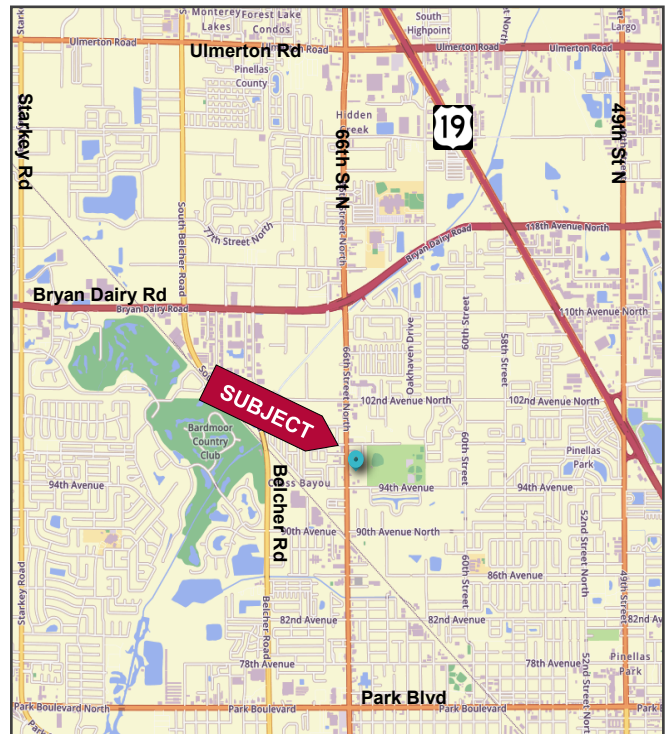
9701 66TH St. N., Pinellas Park, FL 33782



FEATURES

- ❖ LAST UNIT - 720 SF - Available Now
- ❖ Highly Visible Center located on busy 66th St. N. between Bryan Dairy Rd. and Park Blvd.
- ❖ Excellent Tenant Mix - including State Farm, Mexican Restaurant, Barber Shop, Coin Shop, Route 66 Diner and more!
- ❖ Recently Opened: THE PARK American Restaurant / Bar
- ❖ Resurfaced parking lot and upgraded Landscaping completed
- ❖ New Pylon Sign installed and Exterior Painting in progress
- ❖ Leasing at \$16.00/SF NNN
- ❖ 2026 pass through expenses: \$7.70/SF

LOCATION MAP



| 2025 Demographics | | | |
|-------------------|----------|----------|----------|
| | 1-mile | 3-mile | 5-mile |
| Total Population | 10,076 | 97,291 | 272,024 |
| Total Households | 4,232 | 42,836 | 125,542 |
| Average HH Income | \$97,252 | \$95,001 | \$92,706 |

Elliott M. Ross, CCIM
 O: 813.755.6700
 C: 727.639.3800
 elliotross@rossrealty.com

Chris Shryock
 O: 813.755.6700
 C: 727.412.5166
 chris@rossrealty.com

ROSS REALTY GROUP, INC.
 Westshore Square
 4600 W. Cypress St., Suite 525
 Tampa, FL 33607

SOUTHLAND PLAZA

9701 66th St. N., Pinellas Park, FL 33782



Exterior Painting
- in progress

Upgraded Landscap-
ing - completed

New Pylon Signage



SITE PLAN

Parking



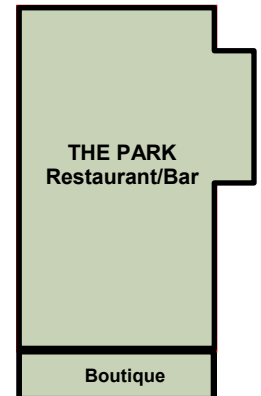
Parking

| Unit | SF | Date Available |
|------|-----|----------------|
| 9743 | 720 | NOW |

Parking

Parking

Parking



66TH STREET NORTH

Any information given herein is obtained from sources considered reliable. However, we are not responsible for misstatement of facts, errors, omissions, prior sale, withdrawal from market, modification of mortgage commitment, terms and considerations, or change in price without notice. The information supplied herein is for informational purposes only and shall not contain a warranty or assurance that said information is correct. Any person intending to rely upon the information supplied herein should verify said information independently.