

17335 GLEN HELEN PARKWAY



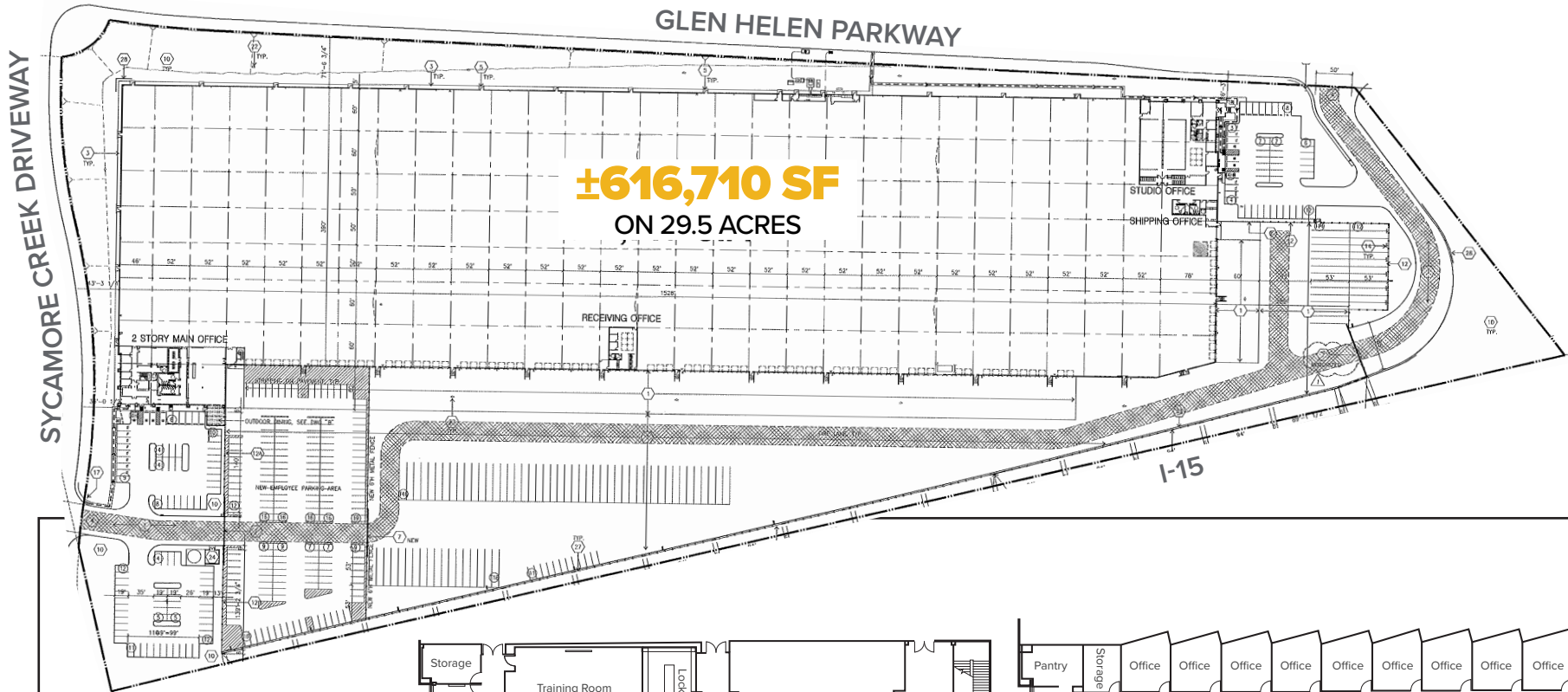
Term through
March 30, 2028



Jones Lang LaSalle Brokerage, Inc. License #: 01856260

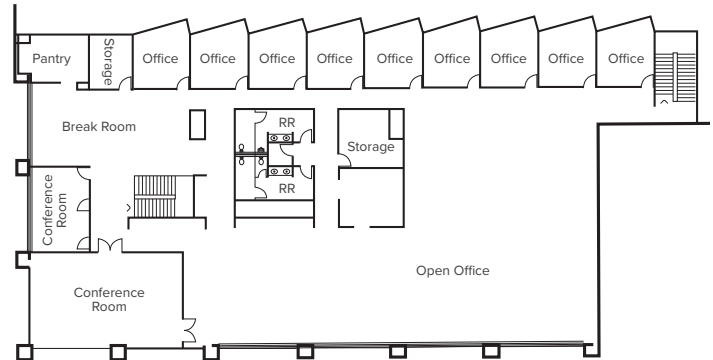
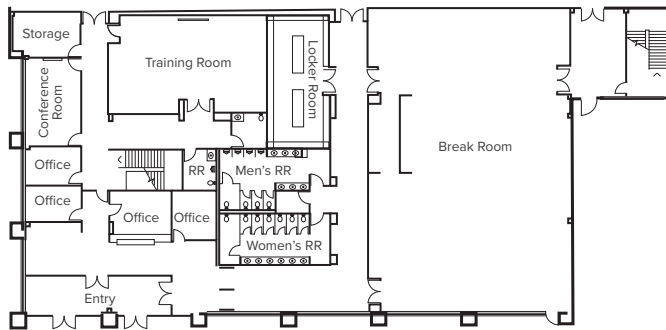
616,710 SF FOR SUBLEASE

Flexible Size



±616,710 SF
ON 29.5 ACRES

- Primary 2-story office**
- Receiving office**
- Shipping office**
- Auxiliary offices**



PROPERTY OVERVIEW

Temperature controlled warehouse **8,000 AMP, 277/480v, 3p electrical service**

±41,177 SF Total Office

32' minimum clear height

±218 auto stalls (expandable to ±339)

86 dock high doors

ESFR sprinkler system

52' x 50' / 52' x 60' typical bay spacing

2 grade level doors

±143 trailer stalls

Major I-15 freeway frontage

CORPORATE NEIGHBORS

17335
GLEN HELEN
PARKWAY

15

Sierra Ave

RIALTO

210

215

FONTANA

SAN BERNARDINO





Patrick Wood

Executive Managing Director
patrick.wood@jll.com
+1 909 467 6857
RE License #01776274

Mike McCrary

Executive Managing Director
mike.mccrary@jll.com
+1 909 467 6885
RE License #01054055

Peter McWilliams

International Director
peter.mcwilliams@jll.com
+1 909 467 6860
RE License #00973278

Chase Berry

Associate
chase.berry@jll.com
+1 909 467 6877
RE License #02196093

Although information has been obtained from sources deemed reliable, neither Owner nor JLL makes any guarantees, warranties or representations, express or implied, as to the completeness or accuracy as to the information contained herein. Any projections, opinions, assumptions or estimates used are for example only. There may be differences between projected and actual results, and those differences may be material. The Property may be withdrawn without notice. Neither Owner nor JLL accepts any liability for any loss or damage suffered by any party resulting from reliance on this information. If the recipient of this information has signed a confidentiality agreement regarding this matter, this information is subject to the terms of that agreement. ©2024 Jones Lang LaSalle IP, Inc. All rights reserved.

