

# For Lease

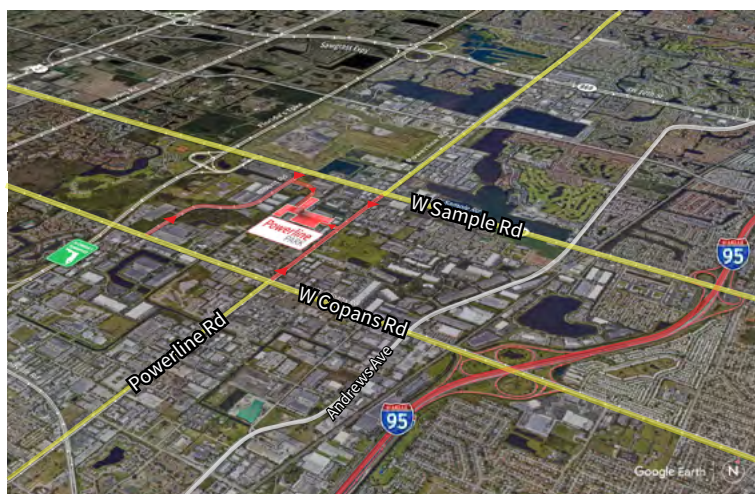
**Powerline Park**  
2321 NW 30th Place  
Pompano Beach, FL 33069



Industrial Space For Lease  
**7,248 SF**

## Powerline Park

2321 NW 30th Place, Pompano Beach, FL 33069



### Location

- Easy access off Sample Road and Powerline Road
- Excellent access to I-95 and the Florida Turnpike
- Equidistant to Fort Lauderdale/Hollywood International Airport and Palm Beach International Airport

### Space Features

- 7,248 SF total
- 1,352 SF of office
- 5,896 SF of warehouse
- 1,455 SF of mezzanine (Bonus SF)
- 24' clear height
- One (1) dock high door (well)
- One (1) grade level oversized door
- Parking ratio: 2.0/1,000 sf



© 2026 Jones Lang LaSalle IP, Inc.

**Peter Johnston**  
M +1 954 980 3224  
peter.johnston@jll.com

**Yuri Quispe**  
M +1 772 201 5305  
yuri.quispe@jll.com

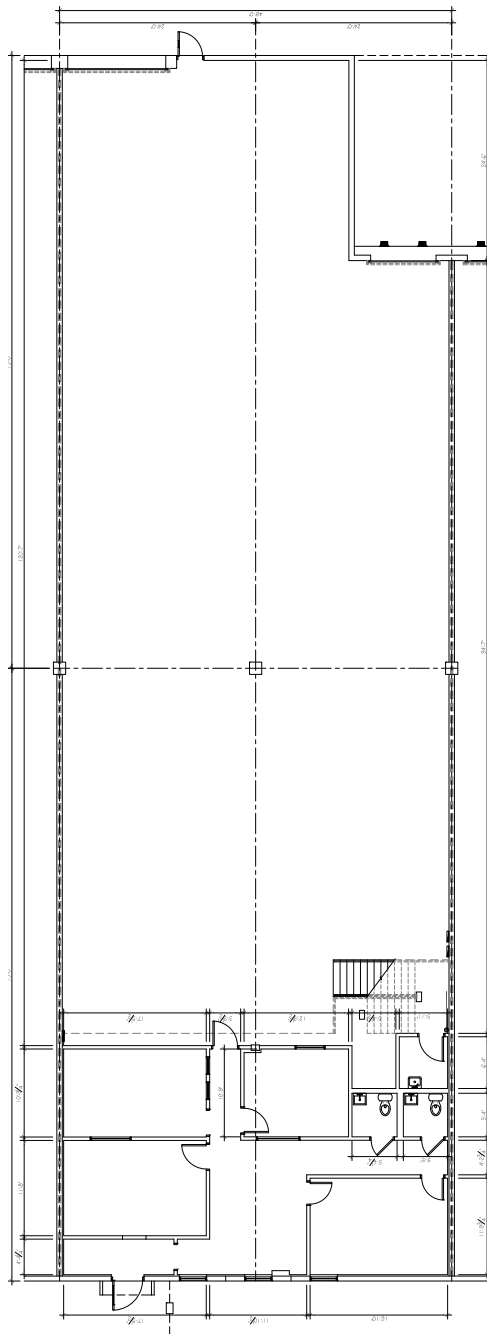
**Peter Sheridan**  
M +1 954 439 4941  
peter.sheridan@jll.com



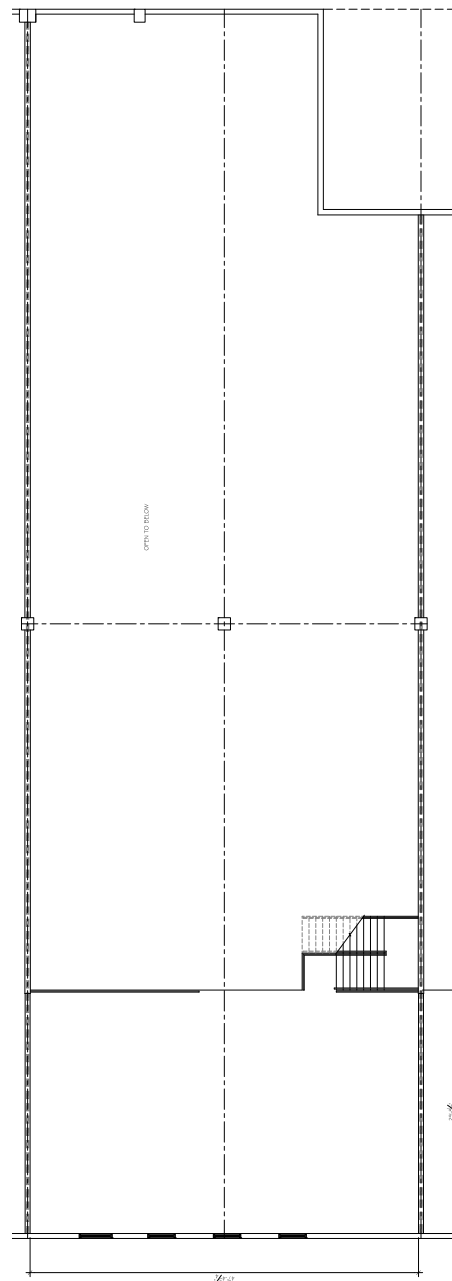
## Powerline Park Floor Plan

Total:	7,248 SF
Office:	1,352 SF
Warehouse:	5,896 SF
Bonus Mezzanine:	1,455 SF

Ground Floor



Mezzanine (Bonus SF)



## Powerline Park Site Plan

■ - Available Space



Building	Suite	Total SF	Office SF	Warehouse SF	Mezzanine SF (Bonus)	Loading	Clear Height	Available Date
4	6	7,248	1,352	5,896	1,455	1 DH / 1 G	24'	3/1/2026

