

LEASE

MADISON PARK

2850 NW 43rd Street #300 Gainesville, FL 32605



PROPERTY DESCRIPTION

Third floor, Class A office space in perhaps the PREMEIR office building in Gainesville: Madison Park. Suite 300 features: 2 entrances, large and open work spaces, great windows providing excellent natural lighting, 6 private offices, a large conference room and a kitchenette. The ADA compliant restrooms are in the common's area so not counted against your square footage. Join prestigious clients like Merrill Lynch in this iconic building.

OFFERING SUMMARY

Lease Rate:	\$ 10,168.00 (NNN)
Available SF:	5,810 SF
Zoning:	PD
APN:	06158-030-210

PROPERTY HIGHLIGHTS

- Class A Office
- ADA Compliant Common Area Restrooms
- After Hours Security Access

Dean R. Cheshire
352 745 1883

Craig Carter
352 339 4038

Michelle Carter
352 339 5734

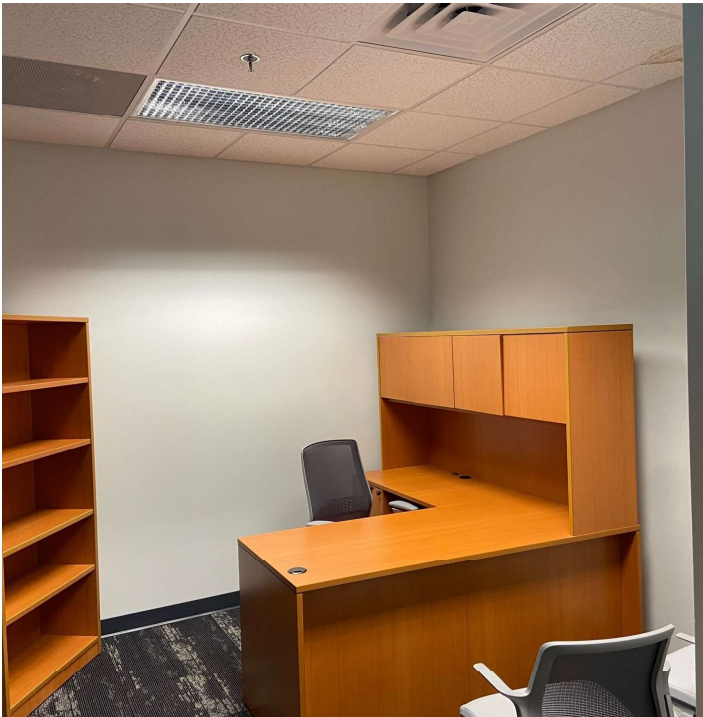
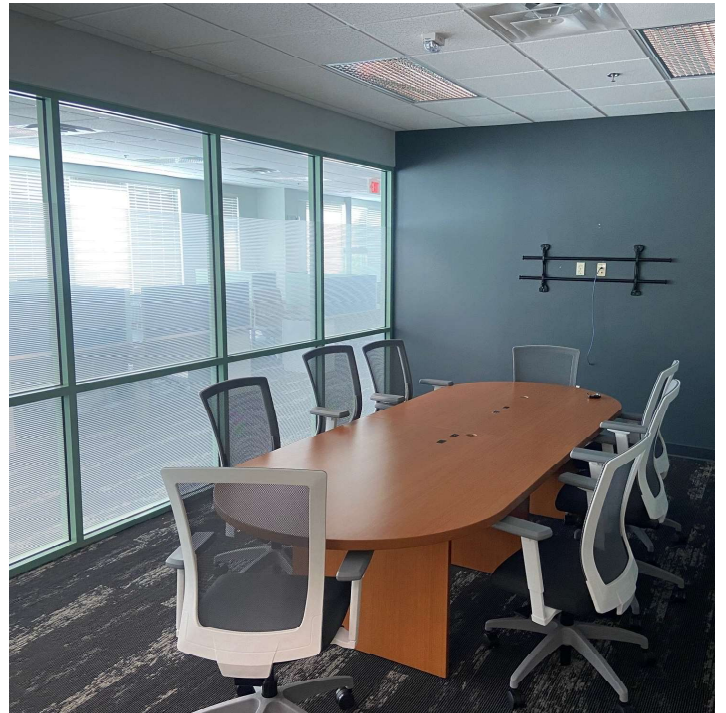


**COLDWELL BANKER
COMMERCIAL**
M.M.
PARRISH REALTORS

LEASE

MADISON PARK

2850 NW 43rd Street # 300 Gainesville, FL 32605



Dean R. Cheshire
352 745 1883

Craig Carter
352 339 4038

Michelle Carter
352 339 5734

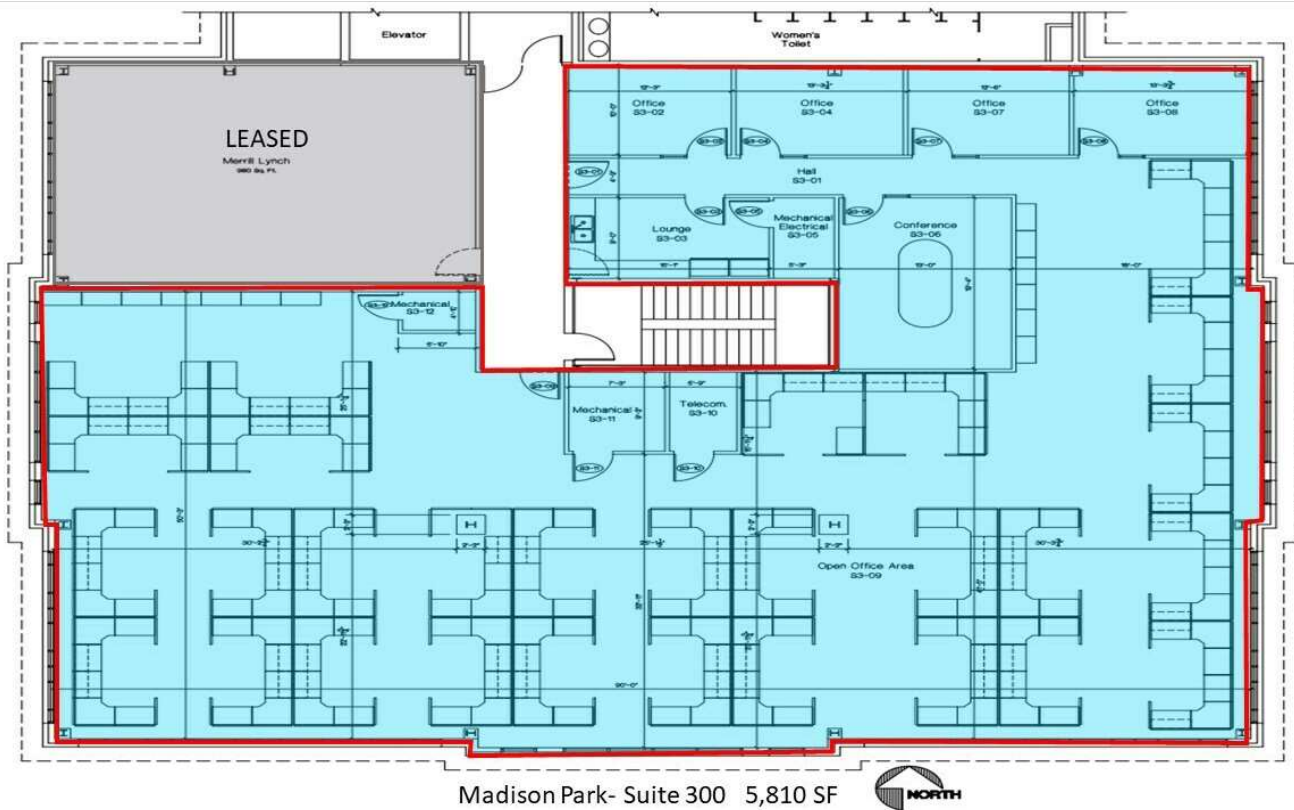


**COLDWELL BANKER
COMMERCIAL**
M.M.
PARRISH REALTORS

LEASE

MADISON PARK

2850 NW 43rd Street Gainesville, FL 32605



Dean R. Cheshire
352 745 1883

Craig Carter
352 339 4038

Michelle Carter
352 339 5734



**COLDWELL BANKER
COMMERCIAL**
M.M.
PARRISH REALTORS

LEASE

MADISON PARK

2850 NW 43rd Street Gainesville, FL 32605



Dean R. Cheshire
352 745 1883

Craig Carter
352 339 4038

Michelle Carter
352 339 5734



**COLDWELL BANKER
COMMERCIAL**
M.M.
PARRISH REALTORS



DEAN R. CHESHIRE, MBA
Licensed Real Estate Broker

MICHELLE CARTER
Commercial Realtor*

CRAIG CARTER
Commercial Realtor*

352.745.1883
dean@mmparrish.com

352.339.5734
mcarter@mmparrish.com

352.339.4038
ccarter@mmparrish.com

The CRE Pro Team has been the dominant commercial presence in North Central Florida for many years. Working with private owners as well as multiple government entities, we have worked on both sides of hundreds of transactions with selling and leasing in all asset classes. Dean grew up in the world of real estate, construction and development. He graduated cum laude from the University of Florida and subsequently earned the distinction of an MBA from the Hough Graduate School of Business at the University of Florida. Craig has been a business owner, a private real estate investor and a City Commissioner. His out-of-the-box thinking and determination have delivered strong successes for his many clients in the commercial real estate industry. Michelle offers many years of business marketing experience and organizational precision in the development of innovative ways to market properties. The CRE Pro Team has drawn from their vast experience and education and have been multi-million-dollar producers for many years.

Learn more about the CRE Pro Team or see their listings at www.CREProTeam.com.

