

# FOR LEASE

9,279 SF of Industrial Space

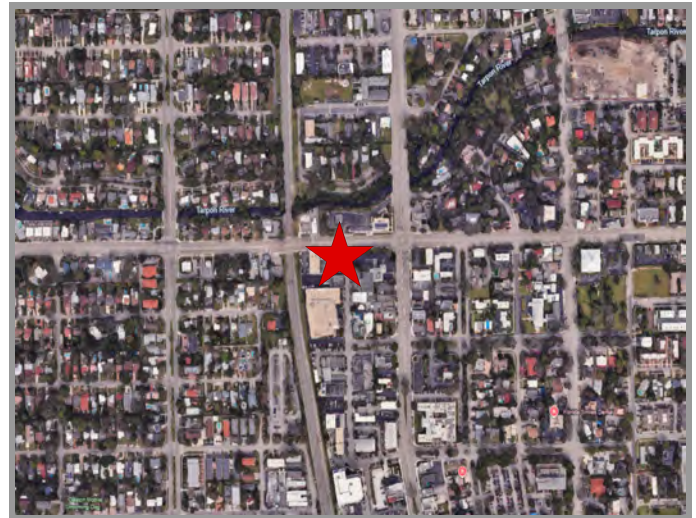
1207 SW 1st Avenue

Fort Lauderdale, FL 33315



## PROPERTY HIGHLIGHTS:

- 9,279 SF Available
- ±1,000 SF Office on two (2) Floors
- 18' Clear Ceiling Height
- Three (3) Grade Level Doors
- Direct Frontage on Davie Blvd.
- Available Now
- **Asking Rate: \$13.00/SF NNN**



## For Leasing Information contact:

**Michael Foxwell, Jr.**  
(305) 495-6685  
[mfoxwell@theeastongroup.com](mailto:mfoxwell@theeastongroup.com)

**Jake Weiss**  
(305) 733-3509  
[jweiss@theeastongroup.com](mailto:jweiss@theeastongroup.com)

  
**Easton & Associates**

[www.TheEastonGroup.com](http://www.TheEastonGroup.com)

10165 NW 19<sup>th</sup> Street, Doral, FL 33172

# PROPERTY PHOTOS

1207 SW 1st Avenue  
Fort Lauderdale, FL 33315



For Leasing Information contact:

**Michael Foxwell, Jr.**  
(305) 495-6685  
[mfoxwell@theeastongroup.com](mailto:mfoxwell@theeastongroup.com)

**Jake Weiss**  
(305) 733-3509  
[jweiss@theeastongroup.com](mailto:jweiss@theeastongroup.com)

  
**Easton & Associates**

[www.TheEastonGroup.com](http://www.TheEastonGroup.com)

10165 NW 19<sup>th</sup> Street, Doral, FL 33172