



# Lake Ronkonkoma, NY

Suffolk County

## Lake Shore Plaza

a foundation for nearly 100 years



**Location:** 1/8 mile west of Holbrook Road at the NW Corner of Portion Road and Cenacle Road, 601 Portion Road, Lake Ronkonkoma, NY

**Description:** Grocery Anchored Shopping Center  
2nd Story Offices

**Major Tenants:** ShopRite, Pet Supplies "Plus", Starbucks, Diamond Braces, Chipotle, Popeyes

**GLA:** 87,560 sf

**Parking:** 571 spaces

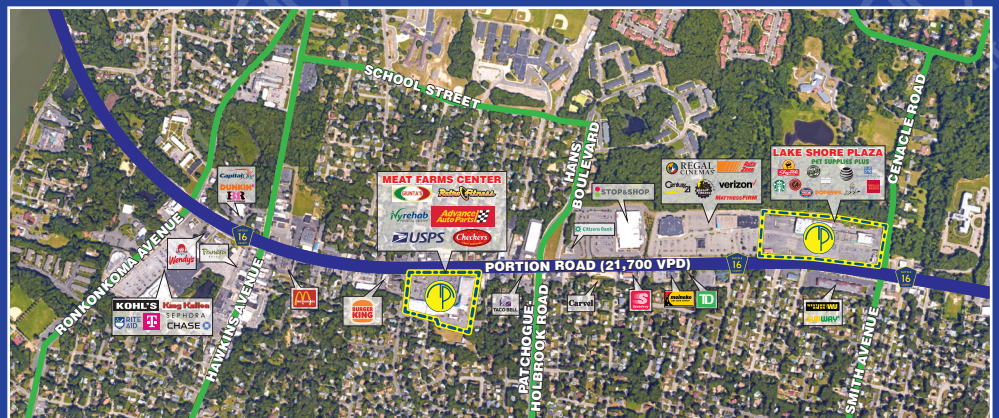
**Demographics:**

2025	1 Mile	3 Miles	5 Miles
Population	11,250	97,246	239,464
Average HH Income	\$108,071	\$122,107	\$120,147
Total HH	4,152	32,890	83,172
Median Age	43.9	41.8	42.9



MILBROOK PROPERTIES LTD.  
CHARLES HIRSCH, PRESIDENT  
CHIRSCH@MILBROOKPROPERTIES.COM  
T (516) 869-1240  
F (516) 869-8576

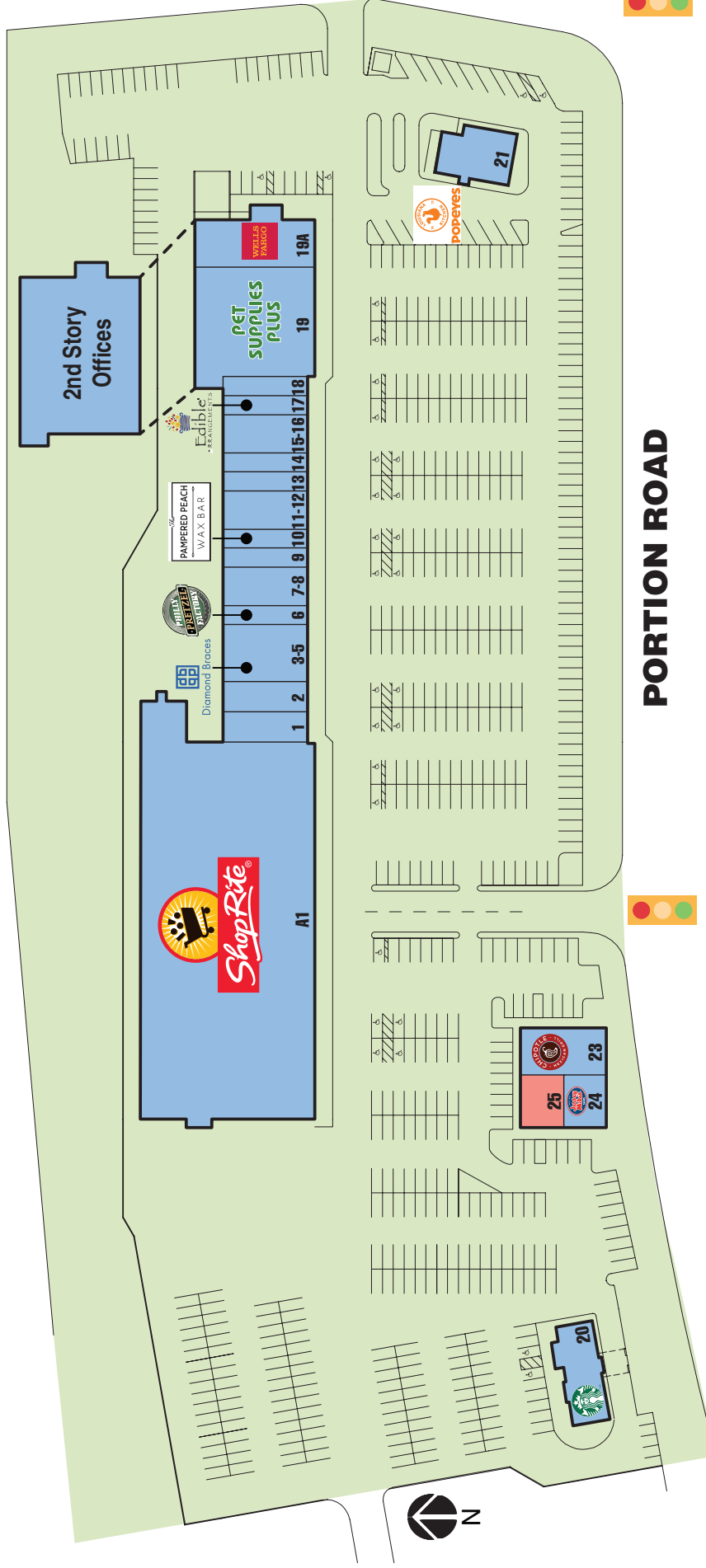
42 BAYVIEW AVENUE, MANHASSET, NY 11030  
WWW.MILBROOKPROPERTIES.COM



# Lake Ronkonkoma, NY

Suffolk County

## Lake Shore Plaza



### PORTION ROAD

Store	Tenant	Dimensions	Size	Store	Tenant	Dimensions	Size
A1	ShopRite	(145'-0" x 313'-0" irr.)	47,491 sf	15-16	Hair Salon	(31'-8" x 70'-3")	2,248 sf
1	Bagel Store	(25'-0" x 70'-3")	1,710 sf	17	Edible Arrangements	(16'-0" x 70'-3")	1,150 sf
2	Urgent Care	(25'-0" x 70'-3")	1,732 sf	18	Chinese Restaurant	(16'-0" x 70'-3")	1,124 sf
3-5	Diamond Braces	(46'-6" x 70'-3")	3,372 sf	19	Pet Supplies "Plus"	(92'-0" x 100'-0")	9,614 sf
6	Philly Pretzel Factory	(16'-0" x 70'-3")	1,124 sf	19A	Wells Fargo Bank	(38'-0" x 100'-0")	3,386 sf
7-8	Wine & Liquor	(31'-8" x 70'-3")	2,248 sf	20	Starbucks	(32'-0" x 85'-0" irr.)	2,816 sf
9	Pizzeria	(16'-0" x 70'-3")	1,124 sf	21	Popeyes	(44'-0" x 62'-8" irr.)	2,955 sf
10	The Pampered Peach	(16'-0" x 70'-3")	1,124 sf	23	Chipotle	(37'-5" x 66'-0")	2,470 sf
11-12	Nail & Spa	(31'-8" x 70'-3")	2,100 sf	24	Jersey Mike's	(38'-5" x 33')	1,267 sf
13	Island Empanada	(16'-0" x 70'-3")	1,120 sf	25	<b>Available</b>	<b>(38'-5" x 33')</b>	<b>1,267 sf</b>
14	Juice Bar	(16'-0" x 70'-3")	1,124 sf				

For information contact:

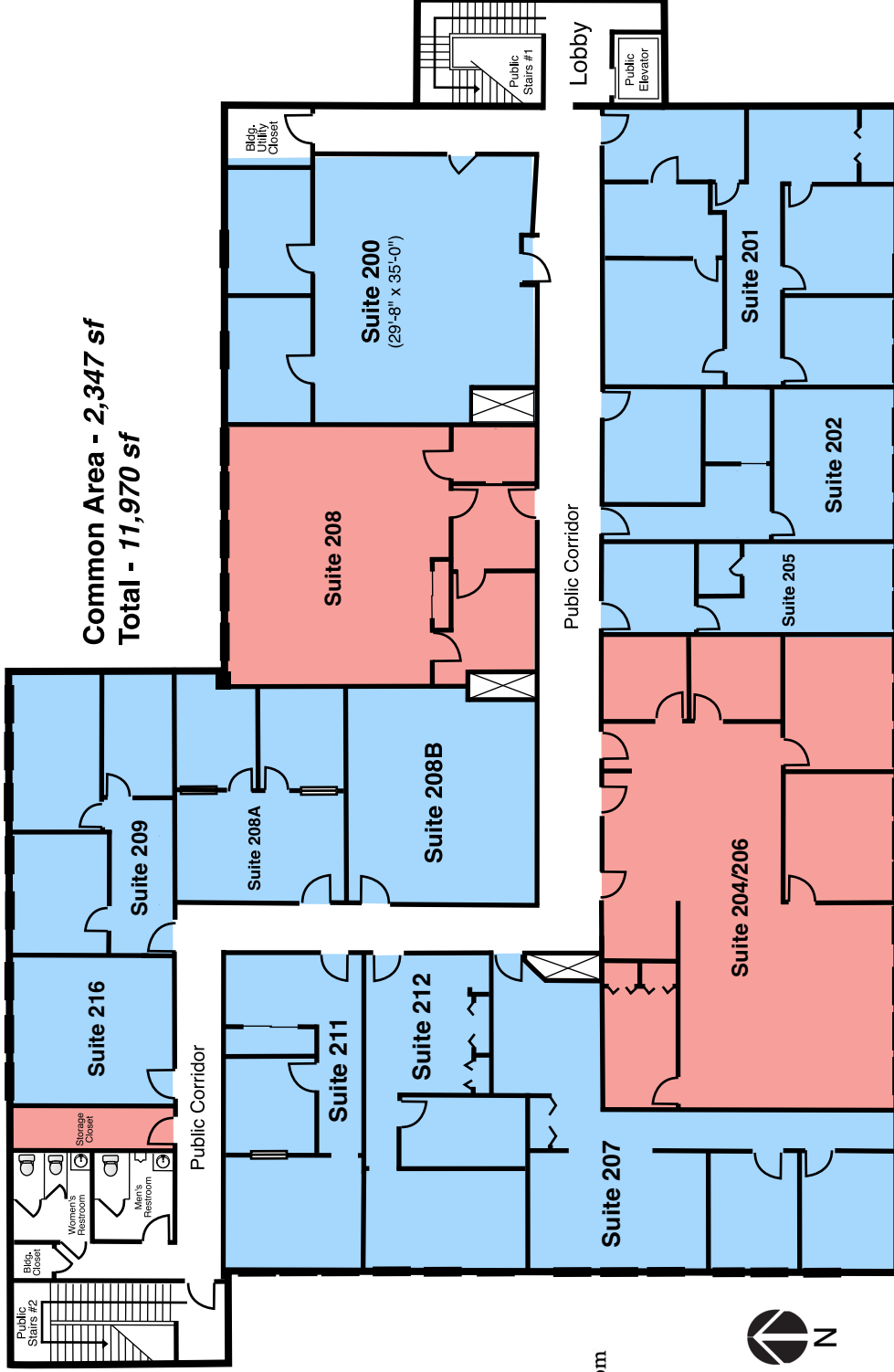
Charles Hirsch  
 President  
 Milbrook Properties Ltd.  
 42 Bayview Avenue  
 Manhasset, NY 11030  
 Email: [chirsch@milbrookproperties.com](mailto:chirsch@milbrookproperties.com)  
 Tel: (516) 869-1240  
 Fax: (516) 869-8576

the above dimensions are for illustrative purposes only

# Lake Ronkonkoma, NY

Suffolk County

## Lake Shore Plaza - 2nd Story Offices



Common Area - 2,347 sf  
Total - 11,970 sf

For information contact:

Charles Hirsch  
President

Milbrook Properties Ltd.

42 Bayview Avenue  
Manhasset, NY 11030

Email: [chirsch@milbrookproperties.com](mailto:chirsch@milbrookproperties.com)

Tel: (516) 869-1240

Fax: (516) 869-8576

Suite	Usable Sf	Rentable Sf	Suite	Usable Sf	Rentable Sf
200. Epic Outfitters	980 sf	1,193 sf	208A. LNK Beauty Studio	460 sf	580 sf
201. Mid Atlantic Pro IT Services	1,095 sf	1,330 sf	208B. EyeQ Security Services	487 sf	608 sf
202. Digit Sign	485 sf	616 sf	209. Key Computing	595 sf	748 sf
<b>204/206. Available</b>	<b>1,656 sf</b>	<b>2,070 sf</b>	211. Hwang Acupuncture	542 sf	643 sf
205. Justin Katz Photography	340 sf	422 sf	212. MLB Wellness	585 sf	725 sf
207. MedCare Therapy Services	940 sf	1,170 sf	216. Mid Atlantic Pro IT Services	288 sf	363 sf
<b>208. Available</b>	<b>1,013 sf</b>	<b>1,266 sf</b>	<b>Storage Closet Available</b>	<b>35 sf</b>	<b>42 sf</b>