



FULLY BUILT OUT HEALTH CLUB
FOR LEASE | ± 19,436 RSF

A BLANK SLATE FOR A MODERN, HIGH PERFORMANCE GYM EXPERIENCE



PRIME LOCATION



LOCKER ROOMS



WEIGHT ROOMS



RECEPTION

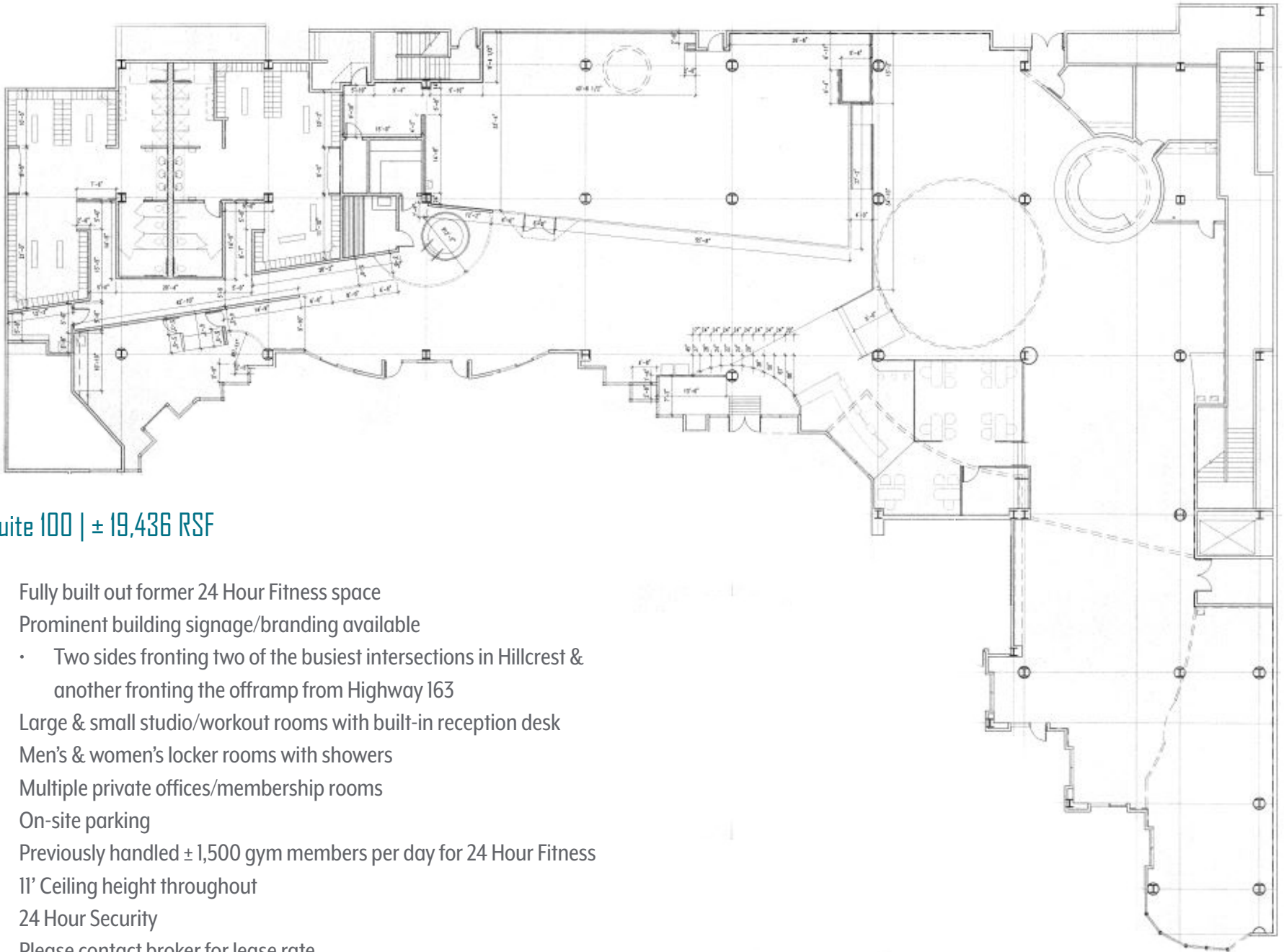


TRAINING AREAS



LARGE STUDIOS

FLOOR PLAN & AMENITIES



Suite 100 | ± 19,436 RSF

- » Fully built out former 24 Hour Fitness space
- » Prominent building signage/branding available
 - Two sides fronting two of the busiest intersections in Hillcrest & another fronting the offramp from Highway 163
- » Large & small studio/workout rooms with built-in reception desk
- » Men's & women's locker rooms with showers
- » Multiple private offices/membership rooms
- » On-site parking
- » Previously handled ± 1,500 gym members per day for 24 Hour Fitness
- » 11' Ceiling height throughout
- » 24 Hour Security
- » Please contact broker for lease rate

For More Information

Josh Buchholz

d: 619 391 1889 | josh@dmjpartners.com

license # 01761228



NO WARRANTY OR REPRESENTATION, EXPRESS OR IMPLIED, IS MADE AS TO THE ACCURACY OF THE INFORMATION CONTAINED HEREIN, AND THE SAME IS SUBMITTED SUBJECT TO ERRORS, OMISSIONS, CHANGE OF PRICE, RENTAL OR OTHER CONDITIONS, PRIOR SALE, LEASE OR FINANCING, OR WITHDRAWAL WITHOUT NOTICE, AND OF ANY SPECIAL LISTING CONDITIONS IMPOSED BY OUR PRINCIPALS NO WARRANTIES OR REPRESENTATIONS ARE MADE AS TO THE CONDITION OF THE PROPERTY OR ANY HAZARDS CONTAINED THEREIN ARE ANY TO BE IMPLIED.