

FOR SUBLEASE



1955 Citracado Pkwy, Suite 201

±1,348 RSF Medical Office

**Myles Martinez**

+1 858 224 9006

[myles.martinez@colliers.com](mailto:myles.martinez@colliers.com)

CA License # 02199914

**Ryan Foley**

+1 619 493 5657

[ryan.foley@colliers.com](mailto:ryan.foley@colliers.com)

CA License # 02018340



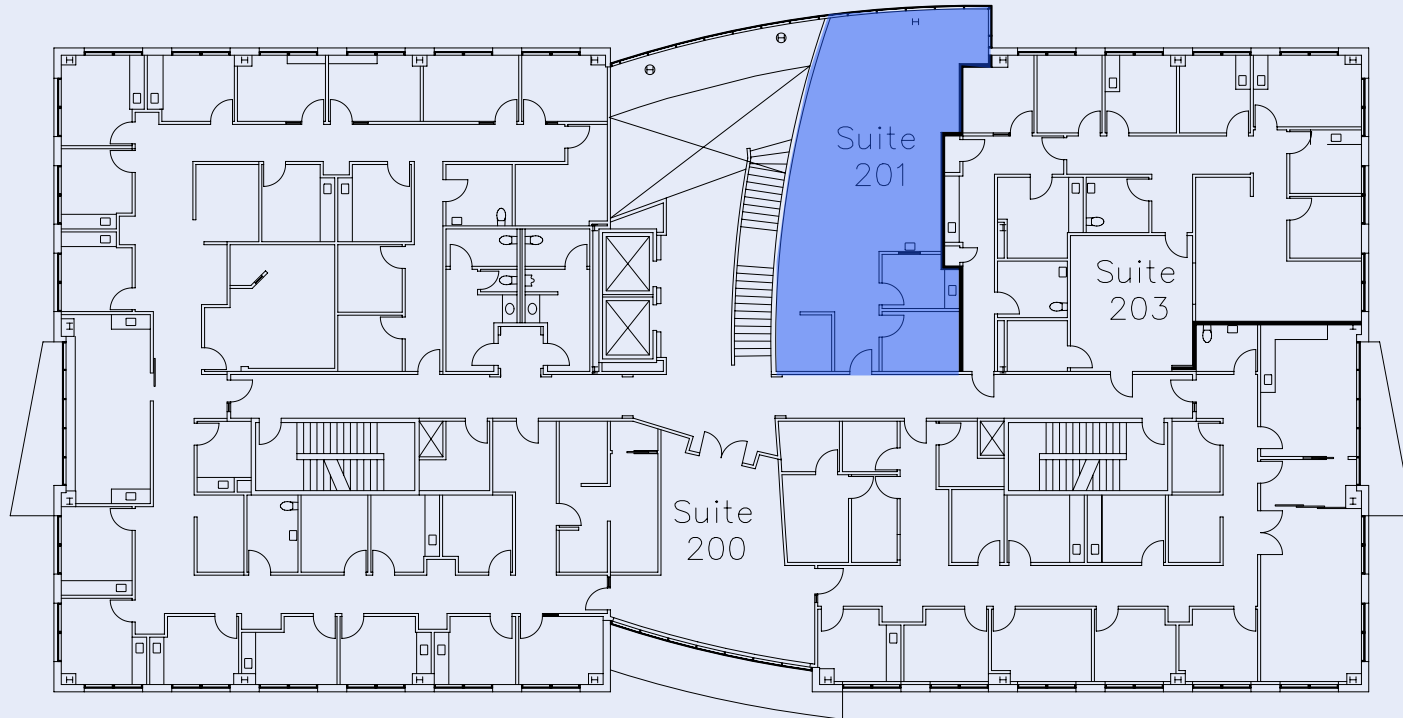
# Property Highlights

- ±1,348 RSF Medical/Office sublease opportunity in Escondido
- Located within Madison Medical Center, a Class A Medical Office Property
- Ample surface and covered parking available
- Convenient Escondido location with immediate access to I-15, retail, dining, and nearby medical and business amenities
- Located within walking distance to Palomar Medical Center Escondido (soon to be UCSD Hospital)
- Lease expires June 1, 2030

Asking Sublease Rate:  
**\$3.45/SF NNN**



# Floorplan



**Suite 201**  
**±1,348 RSF**

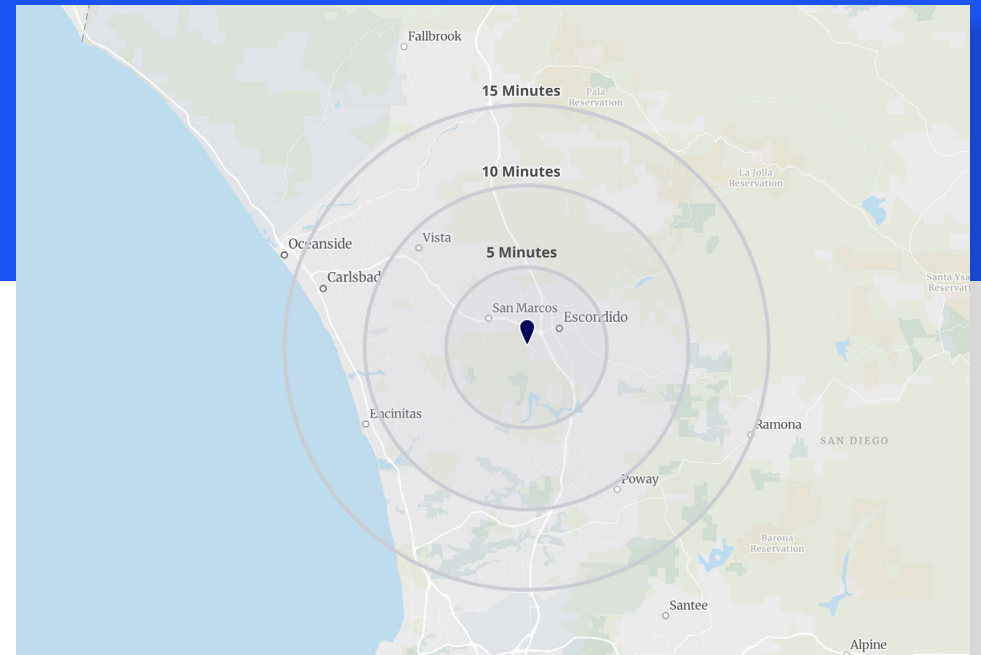
# // The Care Projections Report

1955 Citracado Pkwy, Suite 201



**pivotal.**

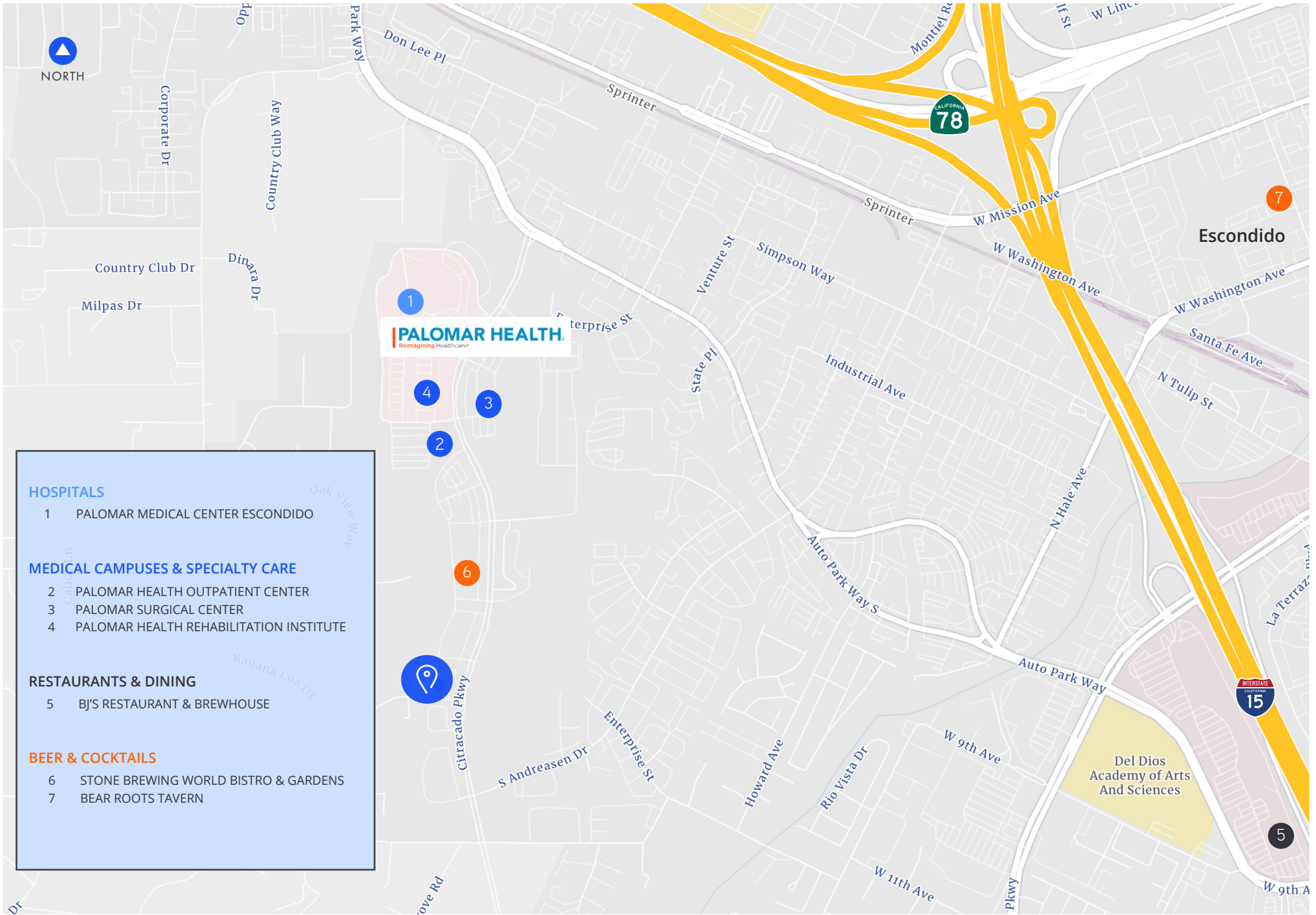
The Care Projections Report presents current, 5-year, and 10-year projections for healthcare demand within a defined market, across both inpatient and outpatient service lines. The report ranks service lines by projected 5-year growth and integrates multiple data sources, including Advisory Board growth projections and age/gender utilization distributions.

**TARGET  
MARKETS**



## SERVICE LINES

SERVICE LINES	TODAY'S VOLUME	5-YEAR VOLUME 	10-YEAR VOLUME 
Cardiology	763K	8.1%	15.0%
Chiropractic	322K	13.6%	40.9%
Endocrinology	4K	25.8%	46.0%
ENT	118K	5.8%	12.1%
General Medicine	187K	18.3%	36.6%
Nephrology	17K	5.9%	11.7%
Neurosurgery	4K	5.7%	16.4%
Obstetrics	27K	5.5%	13.0%
Oncology	585K	6.2%	15.5%
Ophthalmology	308K	8.1%	17.6%
Orthopedics	100K	8.4%	21.0%
Pain Management	43K	8.2%	17.3%
Physical Therapy/Rehabilitation	814K	11.2%	31.9%
Psychiatry	1,321K	15.4%	22.7%
Spine	22K	9.3%	17.3%
Vascular	60K	9.7%	20.7%



# 1955 Citracado Pkwy, Suite 201

±1,348 RSF Medical Office

## For more information, contact:

### **Myles Martinez**

+1 858 224 9006

[myles.martinez@colliers.com](mailto:myles.martinez@colliers.com)

CA License # 02199914

### **Ryan Foley**

+1 619 493 5657

[ryan.foley@colliers.com](mailto:ryan.foley@colliers.com)

CA License # 02018340

