

ALL PROPERTIES ARE OWNER MANAGED AND
STRATEGICALLY LOCATED MINUTES FROM A MAJOR INTERSTATE
IN THE EAST BAY AND CENTRAL VALLEY.

Right Space. Best Place.

www.cranbrookgroup.com

THE CROSSROADS AT HACIENDA

[5980 & 5990 Stoneridge Drive, Pleasanton, CA 94588](#)

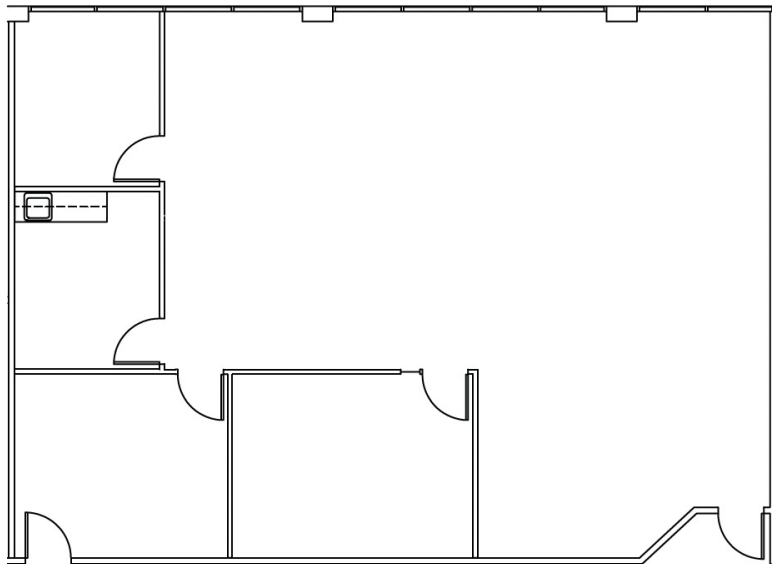


SEE & LEARN MORE ...

Go to cranbrookgroup.com to view more photos and get more information about The Crossroads at Hacienda and our company!

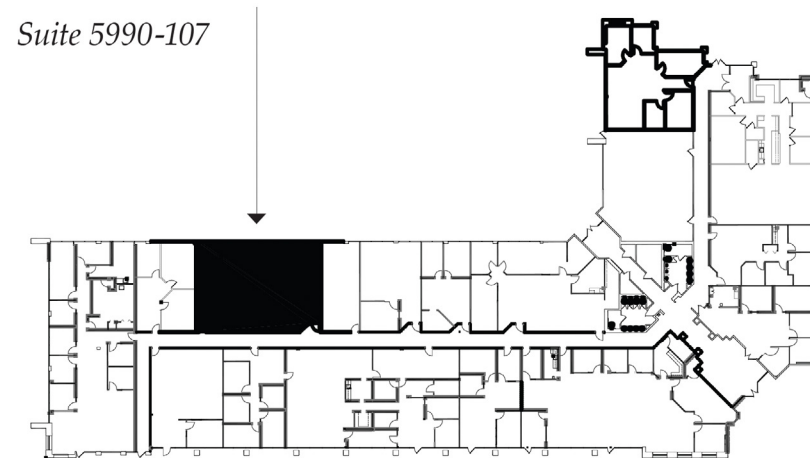
SUITE 5990-107

± 2,089 RENTABLE SQUARE FEET



FIRST FLOOR KEY PLAN

AVAILABLE SUITE IN BLACK BELOW



The information contained herein is based on reliable data, measurements and calculations. We have no reason to doubt its accuracy, but we do not guarantee it. All information should be verified prior to purchase or lease.

For more information, please contact:



Adam Ebner

Listing Broker, CBRE
(510) 697-3331 | adam.ebner@cbre.com
DRE #01213890



Chris Wight

Director of Leasing & Brokerage
O: (209) 549-4960 x 117 | C: (209) 495-1383
cwight@cranbrookgroup.com | DRE #00935049