

**FOR LEASE**

**± 3,245 SF to ± 6,295 SF**



**STEVEN LEONARD**

Managing Director  
+1 415 722 1080  
steven.leonard@cushwake.com  
Lic #00909604

**BRIAN FOSTER**

Executive Director  
+1 415 451 2437  
brian.foster@cushwake.com  
Lic #01393059

**TREVOR BUCK**

Executive Managing Director  
+1 415 451 2436  
trevor.buck@cushwake.com  
Lic #01255462

**1670**

**CORPORATE CIRCLE | PETALUMA, CA**

CORPORATE MEETS COUNTRYSIDE -  
CLASS A OFFICES ON THE EDGE OF SHOLLENBERGER PARK

# 1670 CORPORATE CIRCLE

## HIGHLIGHTS

- Class “A” office space
- Building and monument signage available
- 294 parking spaces
- Easy access to US 101, HWY 116 & HWY 37
- Views of the Petaluma hills
- Bordering 500 acres of protected wetlands bird sanctuary at Shollenberger Park, featuring walking paths, and work out opportunities
- Prompt decision making and uncomplicated negotiations by local, reputable owner
- Adjacent to major North Bay transportation routes
- Near Starbucks, restaurants and other food and beverage



### STEVEN LEONARD

Managing Director  
+1 415 722 1080  
steven.leonard@cushwake.com  
Lic #00909604

### BRIAN FOSTER

Executive Director  
+1 415 451 2437  
brian.foster@cushwake.com  
Lic #01393059

### TREVOR BUCK

Executive Managing Director  
+1 415 451 2436  
trevor.buck@cushwake.com  
Lic #01255462

# AVAILABILITIES

## \$2.25 Full Service

Suite 201: ±6,295 SF	Suite 202: ±3,245 SF
<ul style="list-style-type: none"><li>• 2nd floor</li><li>• In suite kitchen</li><li>• 10 private offices</li><li>• Storage room</li><li>• Conference room</li><li>• Elevator serviced</li><li>• Abundant natural light</li></ul>	<ul style="list-style-type: none"><li>• 2nd Floor</li><li>• Abundant natural light</li><li>• Move in ready</li><li>• Elevator serviced</li><li>• 5 private offices</li></ul>



### STEVEN LEONARD

Managing Director  
+1 415 722 1080  
steven.leonard@cushwake.com  
Lic #00909604

### BRIAN FOSTER

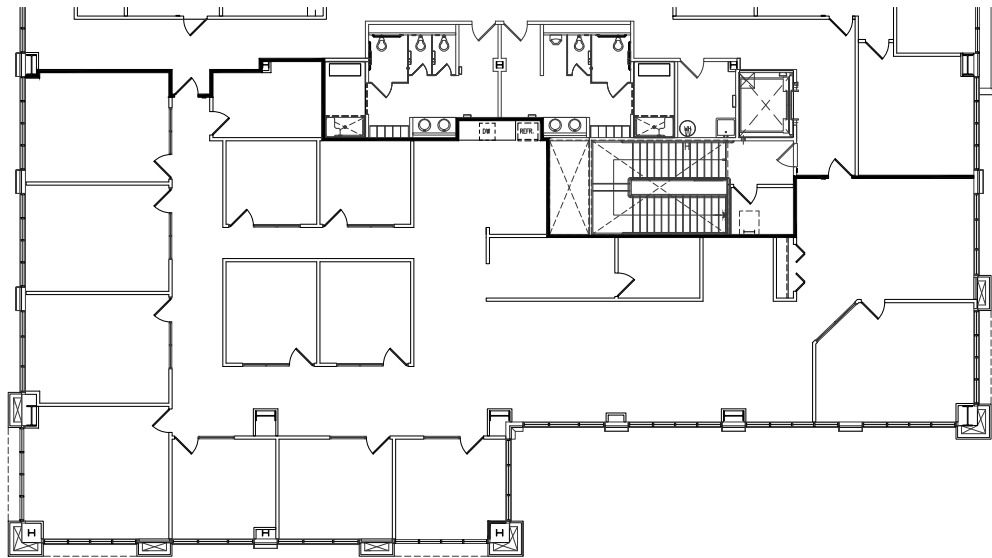
Executive Director  
+1 415 451 2437  
brian.foster@cushwake.com  
Lic #01393059

### TREVOR BUCK

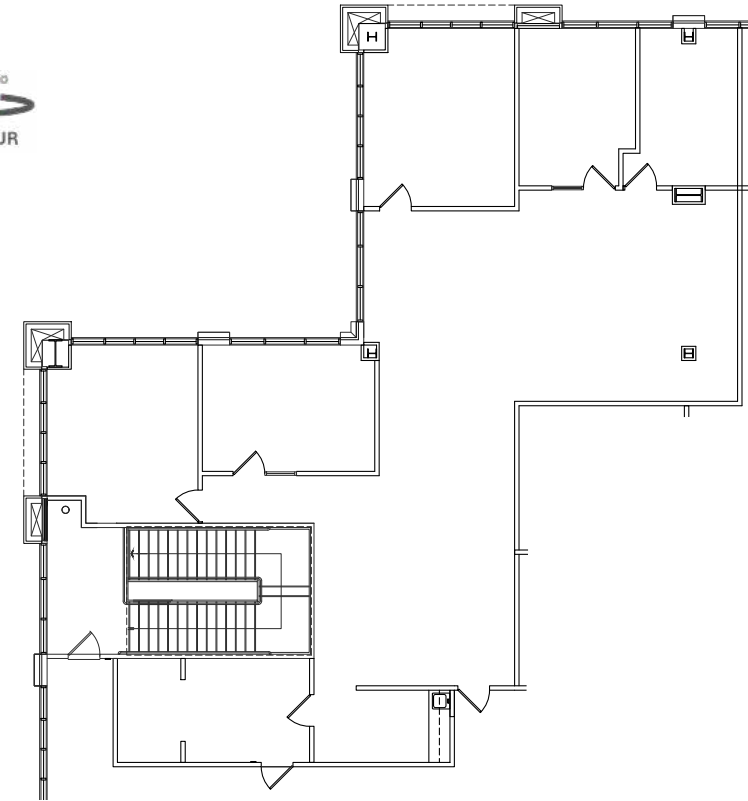
Executive Managing Director  
+1 415 451 2436  
trevor.buck@cushwake.com  
Lic #01255462

# FLOOR PLANS

## Suite 201: ±6,295 SF (\$2.25 Full Service)



## Suite 202: ±3,245 SF (\$2.25 Full Service)



### STEVEN LEONARD

Managing Director  
+1 415 722 1080  
steven.leonard@cushwake.com  
Lic #00909604

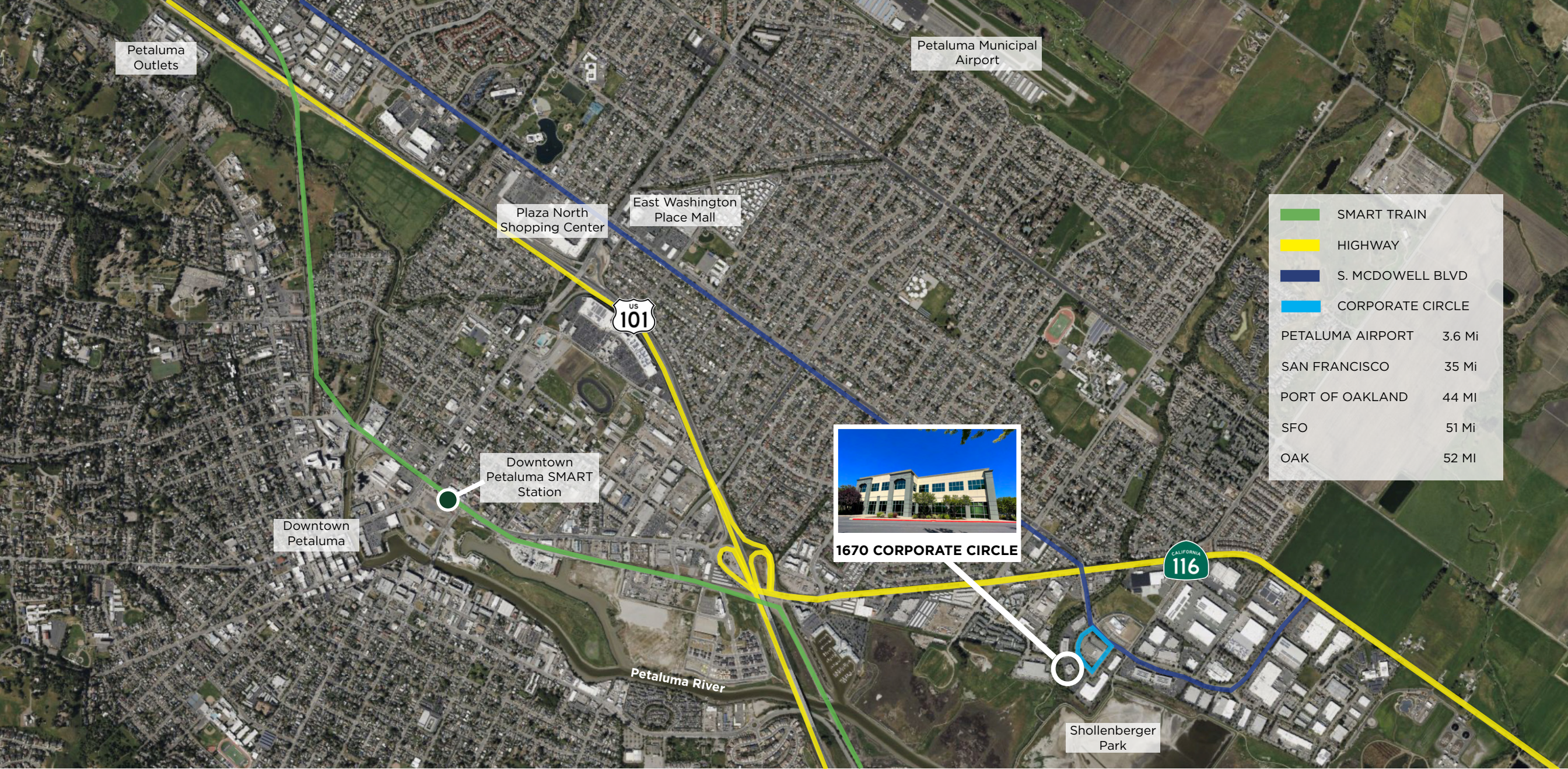
### BRIAN FOSTER

Executive Director  
+1 415 451 2437  
brian.foster@cushwake.com  
Lic #01393059

### TREVOR BUCK

Executive Managing Director  
+1 415 451 2436  
trevor.buck@cushwake.com  
Lic #01255462

©2026 Cushman & Wakefield. All rights reserved. The material in this presentation has been prepared solely for information purposes, and is strictly confidential. Any disclosure, use, copying or circulation of this presentation (or the information contained within it) is strictly prohibited, unless you have obtained Cushman & Wakefield's prior written consent. The views expressed in this presentation are the views of the author and do not necessarily reflect the views of Cushman & Wakefield. Neither this presentation nor any part of it shall form the basis of, or be relied upon in connection with any offer, or act as an inducement to enter into any contract or commitment whatsoever. NO REPRESENTATION OR WARRANTY IS GIVEN, EXPRESS OR IMPLIED, AS TO THE ACCURACY OF THE INFORMATION CONTAINED WITHIN THIS PRESENTATION, AND CUSHMAN & WAKEFIELD IS UNDER NO OBLIGATION TO SUBSEQUENTLY CORRECT IT IN THE EVENT OF ERRORS.



## Petaluma

- Nike Factory Store
  - Levi's Outlet
  - Lucky Supermarket
  - Mi Pueblo
  - Trader Joe's
  - Target
- Safeway
  - CVS
  - Whole Foods
  - McDonald's
  - Starbucks
  - Pub Republic
- Planet Fitness
  - Staples
  - Home2 Suites by Hilton
  - Buffalo Wild Wings
  - BevMo!
  - Sprouts Farmers Market
- Brewster's Beer Garden
  - Crooked Goat Brewing
  - Sol Food
  - Taps on the River
  - In N Out
  - Courtyard by Marriott
- FedEx Ship Center
  - Rustic Bakery Office
  - Taco Bell
  - Wendy's
  - Petaluma Market
  - Ulta Beauty
- Wild Goat Bistro
  - Cucina Paradiso
  - Hotel Petaluma
  - Paradise Sushi & Grill
  - Boulevard 14 Cinema
  - Sugo Trattoria

## About Cushman & Wakefield

The new Cushman & Wakefield draws on the best of both legacy organizations (DTZ and Cushman & Wakefield) to create one of the world's largest real estate services firms, with a combined total of \$5 billion in revenue, 43,000 employees, more than 4.3 billion square feet under management, and \$191 billion in transaction value. Cushman & Wakefield now operates in more than 60 countries around the world and is well positioned in every major market for continued growth.

The new Cushman & Wakefield is a top-tier global commercial real estate services provider in every service line and every major geography in the world. With a tenacious, entrepreneurial, and client-centric culture of highly skilled people behind both firms, the new company will be able to tap into greater resources worldwide to ultimately deliver superior results for clients. Please visit [cushmanwakefield.com](http://cushmanwakefield.com) for more information.

## About Basin Street Properties

Founded in 1974, Basin Street Properties has truly come a long way. The company has grown from the small entrepreneurial firm of the early years to owning and managing over five million square feet of commercial real estate across two states. As a privately held company, Basin Street remains unique in the industry relative to the speed and ease that decisions – and deals – can be made.

Basin Street's investment in Petaluma is clearly their principal legacy; it has changed the fabric of that town forever. The company has demonstrated a profound understanding of how real estate can change a community, and strives to shape that impact with every development or investment in their current markets of Petaluma, Santa Rosa, Sacramento and Reno. Today, Basin Street has the right team in place to successfully navigate rapid growth. Just like in days past, their focus remains on "creating environments where you can thrive."



BASIN STREET  
PROPERTIES

STEVEN LEONARD



BRIAN FOSTER



TREVOR BUCK



SCOTT STRANZL



MIKE WILLIAMS



STEVEN LEONARD

STEVEN.LEONARD@CUSHWAKE.COM

+1 415 722 1080

LIC #00909604

BRIAN FOSTER

BRIAN.FOSTER@CUSHWAKE.COM

+1 415 451 2437

LIC #01393059

TREVOR BUCK

TREVOR.BUCK@CUSHWAKE.COM

+1 415 451 2436

LIC #01255462



CUSHMAN &  
WAKEFIELD



BASIN STREET  
PROPERTIES

BRIAN FOSTER

[BRIAN.FOSTER@CUSHWAKE.COM](mailto:BRIAN.FOSTER@CUSHWAKE.COM)

+1 415 451 2437

LIC #01393059

STEVEN LEONARD

[STEVEN.LEONARD@CUSHWAKE.COM](mailto:STEVEN.LEONARD@CUSHWAKE.COM)

+1 415 722 1080

LIC #00909604

TREVOR BUCK

[TREVOR.BUCK@CUSHWAKE.COM](mailto:TREVOR.BUCK@CUSHWAKE.COM)

+1 415 451 2436

LIC #01255462