

7905 AIRPARK ROAD

Gaithersburg, MD 20879
Montgomery County

WAREHOUSE/ FLEX FOR LEASE

10,425 - 13,563 SF



PROPERTY INFORMATION

- 5 drive-in + 1 dock loading
- 28 + parking spaces
- 3P 120/208 V 1500 Amp
- IL 1.0 Zoning
- 17' Clear Height
- Gas Heat
- Automotive use ok
- Adjacent to the Gaithersburg Airport

Building Area: 13,563 SF

Warehouse: 7,287 SF

1st Floor Showroom: 3,138 SF

2nd Floor Office 3,318 SF

LEASED BY:

klnb

Kenneth Fellows
301-222-0210
kfellows@klnb.com

12435 Park Potomac Ave, Suite 250
Rockville, MD 20854
klnb.com

7905 AIRPARK ROAD

Gaithersburg, MD 20879
Montgomery County

Travel Times From Site

- ICC/I-370 : 2.2 miles
- I-270: 9 miles
- I-495 : 5.8 miles
- I-95: 14.9 miles
- Washington DC: 21.5 miles
- Frederick: 28.4 miles
- Baltimore: 39.9 miles



Kenneth Fellows
kfellows@klnb.com
301-222-0210

12435 Park Potomac Ave, Suite 250
Rockville MD, 20854
klnb.com



7905 AIRPARK ROAD

Gaithersburg, MD 20879
Montgomery County

FLOOR PLAN

Building Area | 13,563 SF

Warehouse: 7,287 SF

1st Floor Showroom: 3,138 SF

2nd Floor Office: 3,318 SF

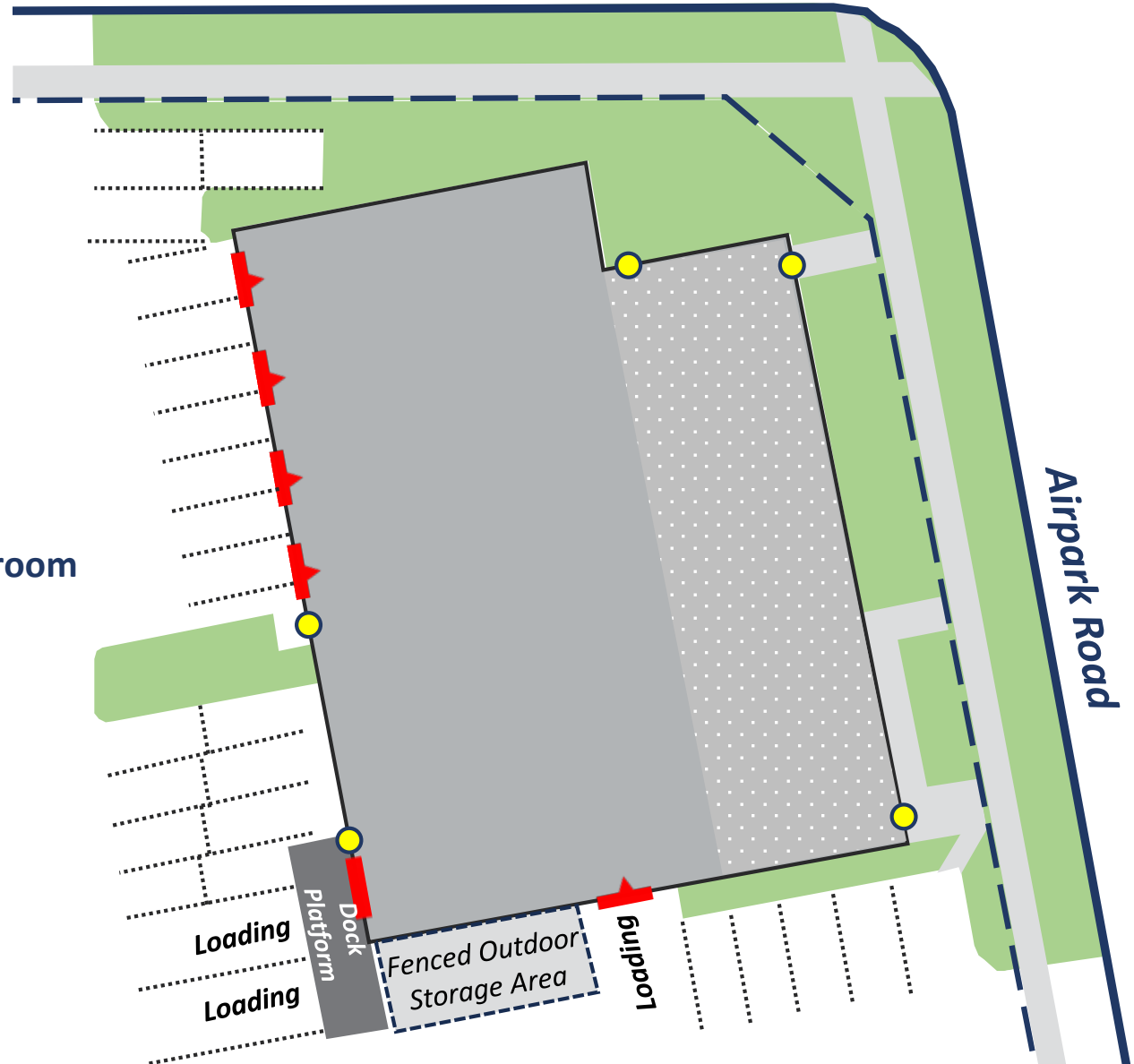
 Drive-In Door

 Loading Dock

 Area with 2nd Fl. Office & 1st Fl. Showroom

 Warehouse

 Door



7905 AIRPARK ROAD

Gaithersburg, MD 20879
Montgomery County

PHOTOS



Kenneth Fellows
kfellows@klnb.com
301-222-0210

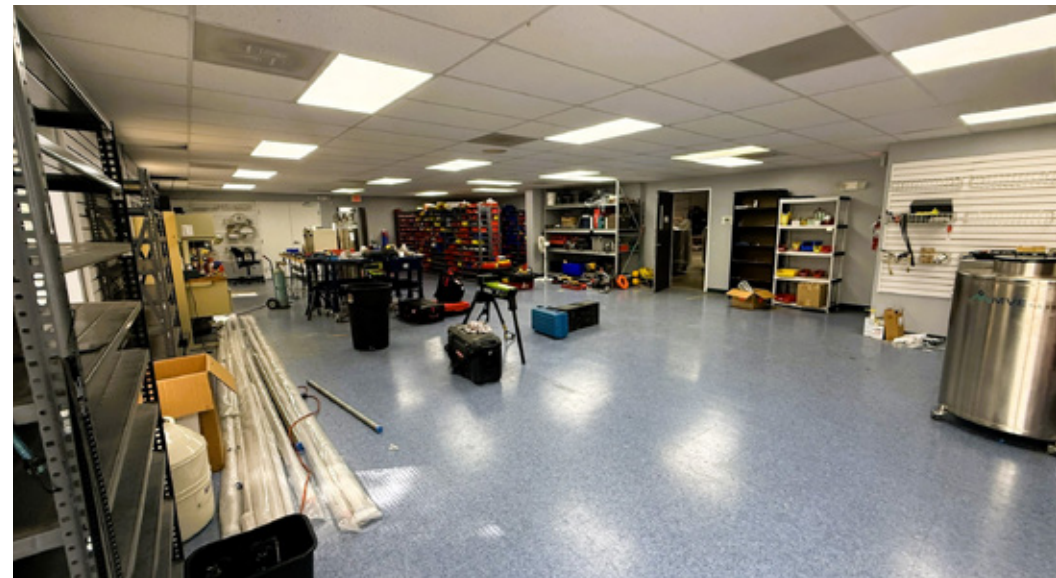
12435 Park Potomac Ave, Suite 250
Rockville MD, 20854
klnb.com

klnb

7905 AIRPARK ROAD

Gaithersburg, MD 20879
Montgomery County

PHOTOS



Kenneth Fellows
kfellows@klnb.com
301-222-0210

12435 Park Potomac Ave, Suite 250
Rockville MD, 20854
klnb.com

klnb

7905 AIRPARK ROAD

Gaithersburg, MD 20879

Montgomery County

[CLICK TO VIEW PROPERTY WEBSITE](#)

For More Information, Please Contact:

Kenneth Fellows
kfellows@klnb.com
301-222-0210



While we have no reason to doubt the accuracy of any of the information supplied, we cannot, and do not, guarantee its accuracy. All information should be independently verified prior to a purchase or lease of the property. We are not responsible for errors, omissions, misuse, or misinterpretation of information contained herein and make no warranty of any kind, express or implied, with respect to the property or any other matters.

12435 Park Potomac Ave, Suite 250
Rockville MD, 20854
klnb.com

