

Office | For Lease

CBRE

5734 Yonge Street

Toronto, ON

Walking Distance to Finch GO & TTC Subway Station

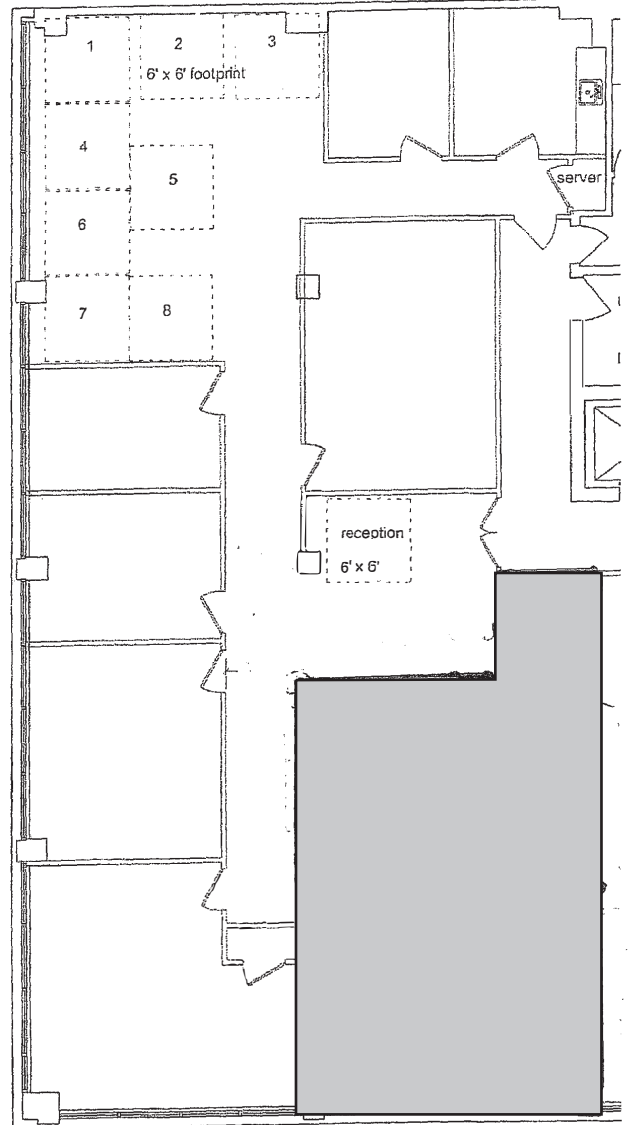
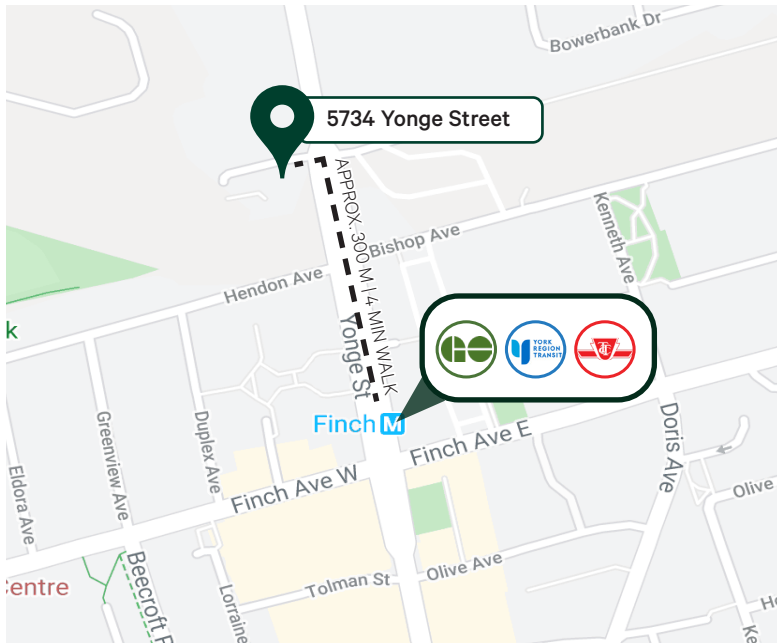


Property Details

| | |
|-------------------------|--|
| Available Area: | Suite 400 - Approx. 2,646 sq. ft |
| Net Rent: | \$17.50 per sq. ft. per annum |
| Additional Rent: | \$20.30 per sq. ft. per annum (2023 estimate) |

Comments

- Finished office space, move-in condition
- Prime Yonge Street location
- Surface & underground parking available
- Located immediately beside Finch GO Station, TTC subway and bus station & YRT bus terminal



Contact Us

Craig Williamson**
Senior Vice President
+1 416 495 6267
craig.williamson@cbre.com

Gary L. Williamson*
Senior Vice President
+1 416 495 6247
gary.williamson@cbre.com

*Sales Representative **Broker | All Outlines Are Approximate | CBRE Limited, Real Estate Brokerage | 2005 Sheppard Ave. E., #800, Toronto, ON M2J 5B4

This disclaimer shall apply to CBRE Limited, Real Estate Brokerage, and to all other divisions of the Corporation; to include all employees and independent contractors ("CBRE"). The information set out herein, including, without limitation, any projections, images, opinions, assumptions and estimates obtained from third parties (the "Information") has not been verified by CBRE, and CBRE does not represent, warrant or guarantee the accuracy, correctness and completeness of the Information. CBRE does not accept or assume any responsibility or liability, direct or consequential, for the Information or the recipient's reliance upon the Information. The recipient of the Information should take such steps as the recipient may deem necessary to verify the Information prior to placing any reliance upon the Information. The Information may change and any property described in the Information may be withdrawn from the market at any time without notice or obligation to the recipient from CBRE. CBRE and the CBRE logo are the service marks of CBRE Limited and/or its affiliated or related companies in other countries. All other marks displayed on this document are the property of their respective owners. All Rights Reserved. Mapping Sources: Canadian Mapping Services canadamapping@cbre.com; MapPoint, DMTI Spatial, Envirionics Analytics, Microsoft Bing, Google Earth