

AVAILABLE FOR LEASE

FIRST & SECOND FLOOR OFFICE SPACE AVAILABLE
±2,500 SF TO ±20,660 SF

9421 HAVEN AVENUE

RANCHO CUCAMONGA, CALIFORNIA



JEFF BISCHOFBERGER

SENIOR VICE PRESIDENT/PRINCIPAL

909.373.2708

jbischof@lee-assoc.com

DRE #01512151

LEE & ASSOCIATES - ONTARIO

3535 Inland Empire Boulevard
Ontario, California 91764

(909) 989-7771 | lee-associates.com

 LEE &
ASSOCIATES

COMMERCIAL REAL ESTATE SERVICES
ONTARIO

CORPORATE ID #00976995

FIRST & SECOND FLOOR OFFICE SPACE

AVAILABLE FOR LEASE | ±2,500 SF TO ±20,660 SF

9421 HAVEN AVENUE
RANCHO CUCAMONGA, CALIFORNIA

PROPERTY FEATURES

- TWO-STORY MULTI-TENANT OFFICE BUILDING
 - ±2,500 SQUARE FEET TO ±20,660 SQUARE FEET AVAILABLE FOR LEASE
 - CLASS "A" OFFICE ENVIRONMENT
 - EXCELLENT HAVEN AVENUE VISIBILITY + ACCESS
 - BUILDING TOP SIGNAGE AVAILABLE
 - EXISTING FURNITURE AVAILABLE FOR USE BY TENANT
 - 24-HOUR ELECTRONIC KEY CARD ACCESS
 - 4:1,000 PARKING RATIO
 - ELEVATOR SERVED
 - LOCATED WITHIN ±5-MILES OF THE ONTARIO INTERNATIONAL AIRPORT
 - EXCELLENT ACCESS TO THE I-10, I-15 & CA-210 FREEWAYS
 - LOCATED WITHIN ±2-MILES FROM THE RANCHO CUCAMONGA COURTHOUSE
- IN CLOSE PROXIMITY TO THE TOYOTA ARENA, ONTARIO MILLS MALL,
HAVEN CITY MARKETPLACE AND THE BRAND NEW RETAIL CENTER
ANCHORED BY STATER BROS.
- PRESTIGIOUS CORPORATE ADDRESS
 - TWO POINTS OF ACCESS VIA HAVEN AVENUE & TRADEMARK PARKWAY



JEFF BISCHOFBERGER
SENIOR VICE PRESIDENT/PRINCIPAL
909.373.2708
jbischof@lee-assoc.com
DRE #01512151

LEE & ASSOCIATES - ONTARIO
3535 Inland Empire Boulevard
Ontario, California 91764
(909) 989-7771 | lee-associates.com

LEE & ASSOCIATES
COMMERCIAL REAL ESTATE SERVICES
ONTARIO

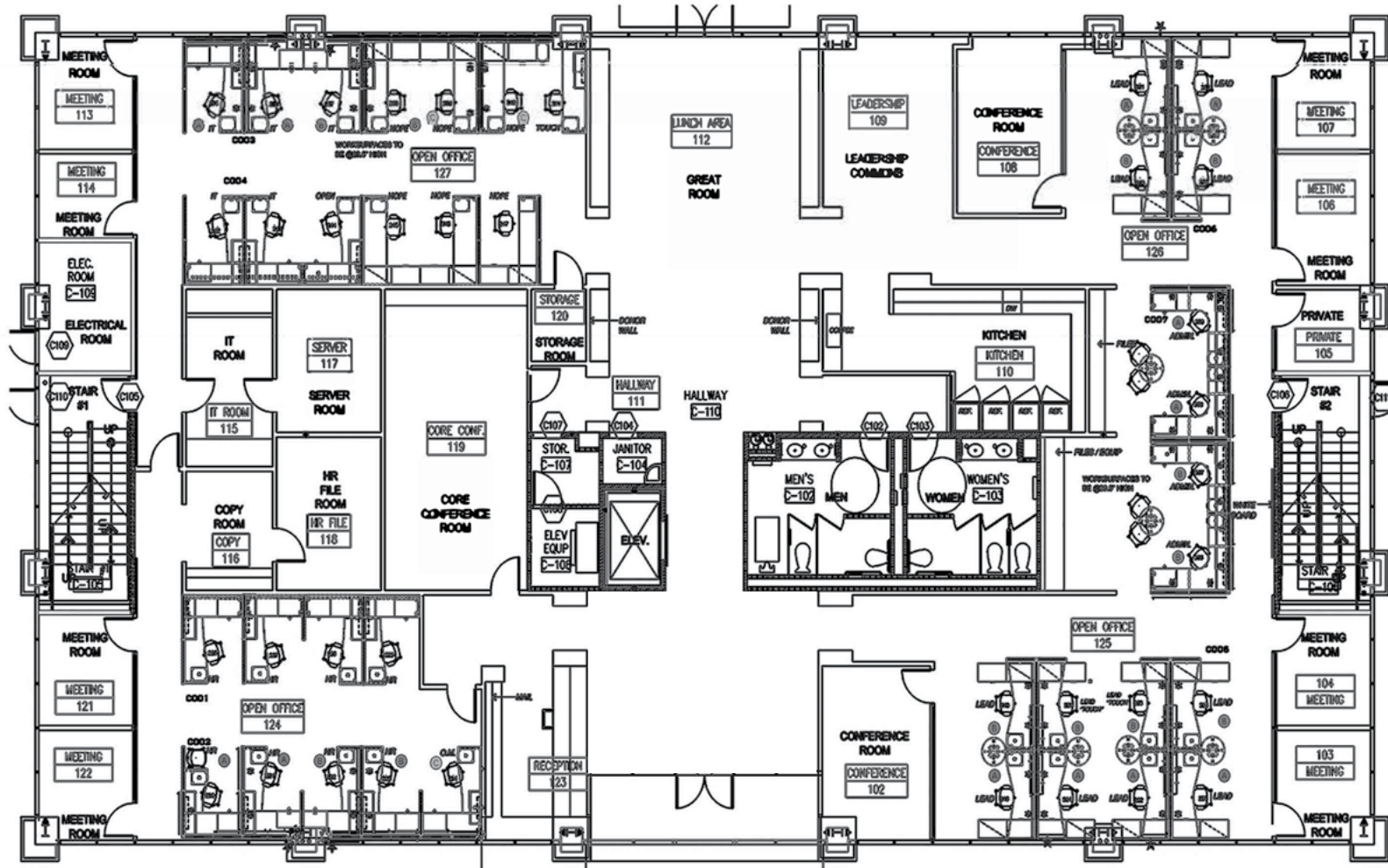
CORPORATE ID #00976995

FIRST & SECOND FLOOR OFFICE SPACE

AVAILABLE FOR LEASE | ±2,500 SF TO ±20,660 SF

9421 HAVEN AVENUE
RANCHO CUCAMONGA, CALIFORNIA

FIRST FLOOR FLOOR PLAN



LEE & ASSOCIATES - ONTARIO
3535 Inland Empire Boulevard
Ontario, California 91764
(909) 989-7771 | lee-associates.com

LEE & ASSOCIATES
COMMERCIAL REAL ESTATE SERVICES
ONTARIO

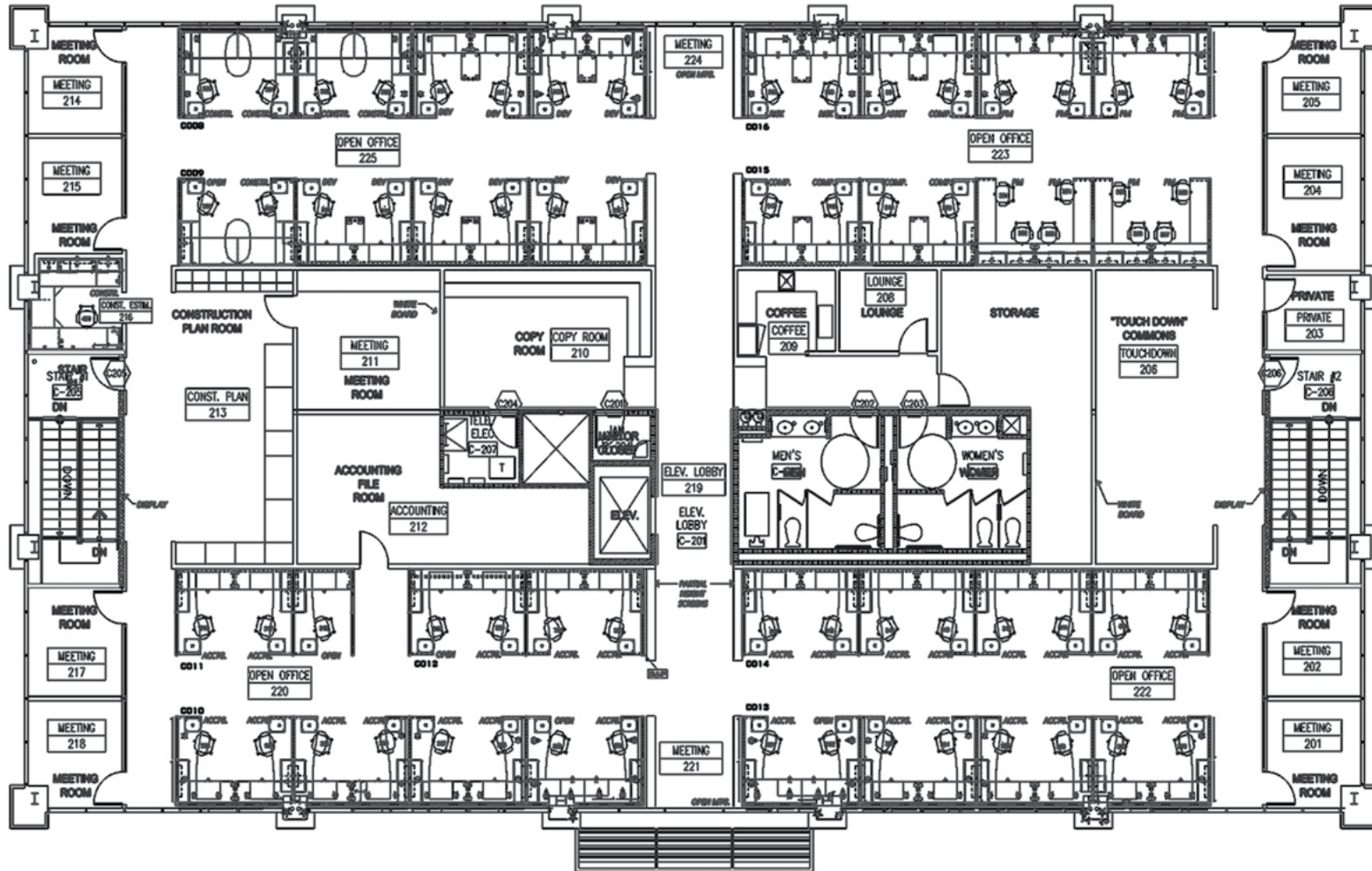
CORPORATE ID #00976995

FIRST & SECOND FLOOR OFFICE SPACE

AVAILABLE FOR LEASE | ±2,500 SF TO ±20,660 SF

9421 HAVEN AVENUE
RANCHO CUCAMONGA, CALIFORNIA

SECOND FLOOR FLOOR PLAN



JEFF BISCHOFBERGER
SENIOR VICE PRESIDENT/PRINCIPAL
909.373.2708
jbischof@lee-assoc.com
DRE #01512151

LEE & ASSOCIATES - ONTARIO
3535 Inland Empire Boulevard
Ontario, California 91764
(909) 989-7771 | lee-associates.com

LEE & ASSOCIATES
COMMERCIAL REAL ESTATE SERVICES
ONTARIO
CORPORATE ID #00976995

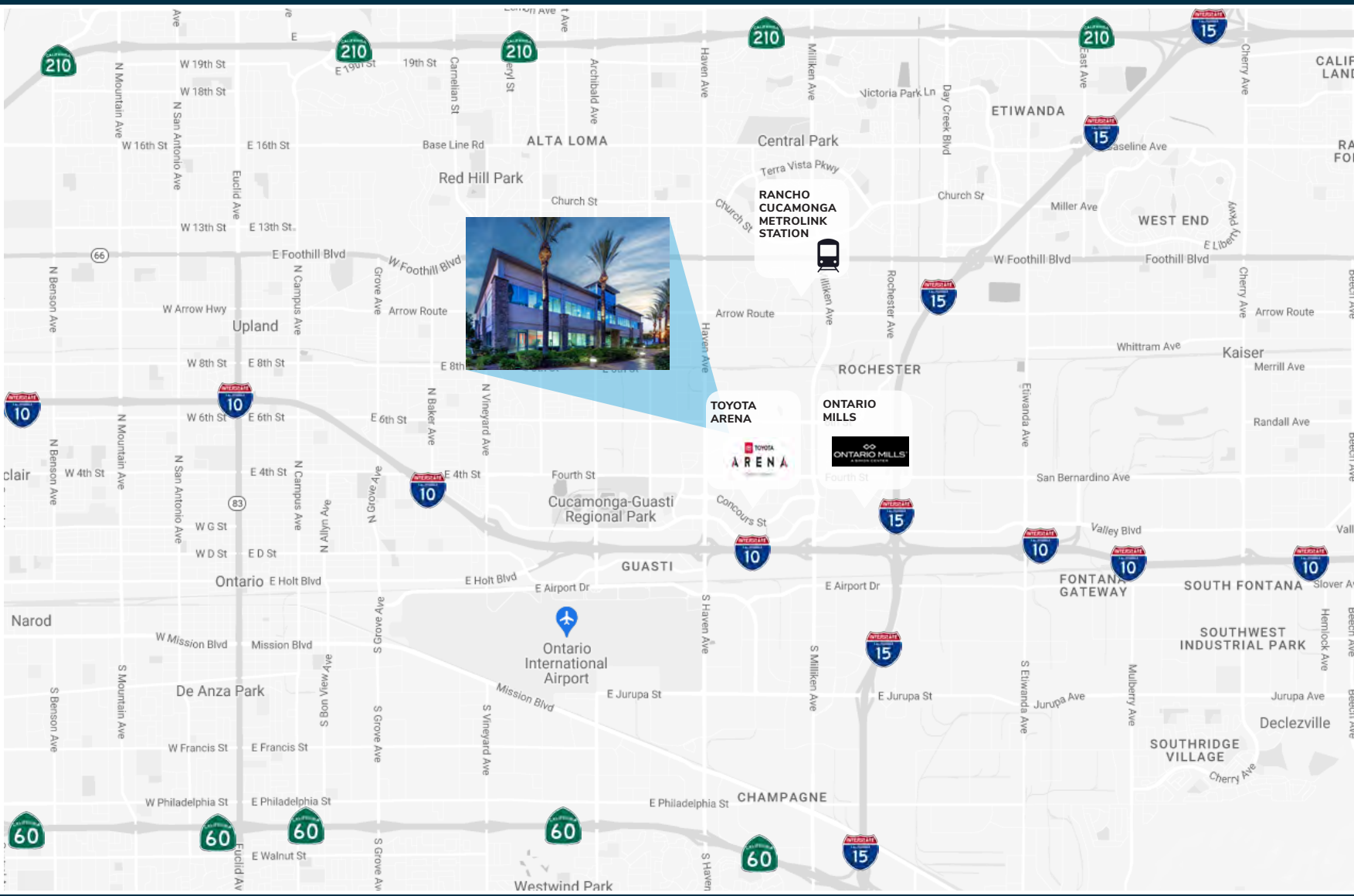
FIRST & SECOND FLOOR OFFICE SPACE

AVAILABLE FOR LEASE | ±2,500 SF TO ±20,660 SF

9421 HAVEN AVENUE

RANCHO CUCAMONGA, CALIFORNIA

LOCATION MAP



JEFF BISCHOFBERGER
SENIOR VICE PRESIDENT/PRINCIPAL
909.373.2708
jbischof@lee-assoc.com
DRE #01512151

LEE & ASSOCIATES - ONTARIO
3535 Inland Empire Boulevard
Ontario, California 91764
(909) 989-7771 | lee-associates.com

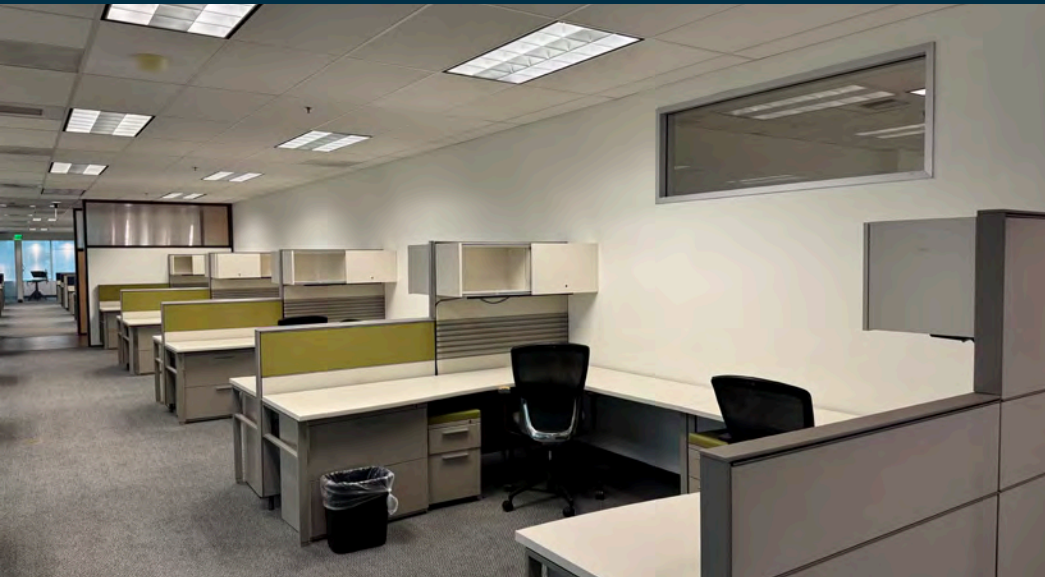
LEE & ASSOCIATES
COMMERCIAL REAL ESTATE SERVICES
ONTARIO
CORPORATE ID #00976995

All information furnished regarding property for sale, rental or financing is from sources deemed reliable, but no warranty or representation is made to the accuracy thereof and same is submitted to errors, omissions, change of price, rental or other conditions prior to sale, lease or financing or withdrawal without notice. No liability of any kind is to be imposed on the broker herein.

FIRST & SECOND FLOOR OFFICE SPACE

AVAILABLE FOR LEASE | ±2,500 SF TO ±20,660 SF

9421 HAVEN AVENUE
RANCHO CUCAMONGA, CALIFORNIA



JEFF BISCHOFBERGER
SENIOR VICE PRESIDENT/PRINCIPAL
909.373.2708
jbischof@lee-assoc.com
DRE #01512151

LEE & ASSOCIATES - ONTARIO
3535 Inland Empire Boulevard
Ontario, California 91764
(909) 989-7771 | lee-associates.com

LEE & ASSOCIATES
COMMERCIAL REAL ESTATE SERVICES
ONTARIO

CORPORATE ID #00976995

9421 HAVEN AVENUE

RANCHO CUCAMONGA, CALIFORNIA

FOR MORE INFORMATION, PLEASE CONTACT:

JEFF BISCHOFBERGER

SENIOR VICE PRESIDENT/PRINCIPAL

909.373.2708

jbischof@lee-assoc.com

DRE #01512151

LEE & ASSOCIATES - ONTARIO

3535 Inland Empire Boulevard | Ontario, California 91764

(909) 989-7771 | lee-assoc.com

Corporate ID: 00976995



**LEE &
ASSOCIATES**

COMMERCIAL REAL ESTATE SERVICES
ONTARIO