

# SIX TOWER BRIDGE

Conshohocken, PA



## FEATURES & AMENITIES

- Within walking distance of public transportation including the Norristown Regional Rail line—running to Center City Philadelphia and Amtrak's 30th Street Station—and Bus Routes 94, 95, and 97
- Bike share program provides easy access to downtown Conshohocken and the adjacent Schuylkill River Trail
- Immediate access to 40 miles of landscaped walking paths and picnic areas
- On-site fitness center with locker room and shower facilities
- Close proximity to numerous popular eateries, many within walking distance
- Adjacent to Marriott Tower Residence Inn and apartment complex
- Exceptional access to the Schuylkill Expressway (I-76) and Blue Route (I-476) with a direct connection to the Pennsylvania Turnpike (I-276)

Class A Office Building

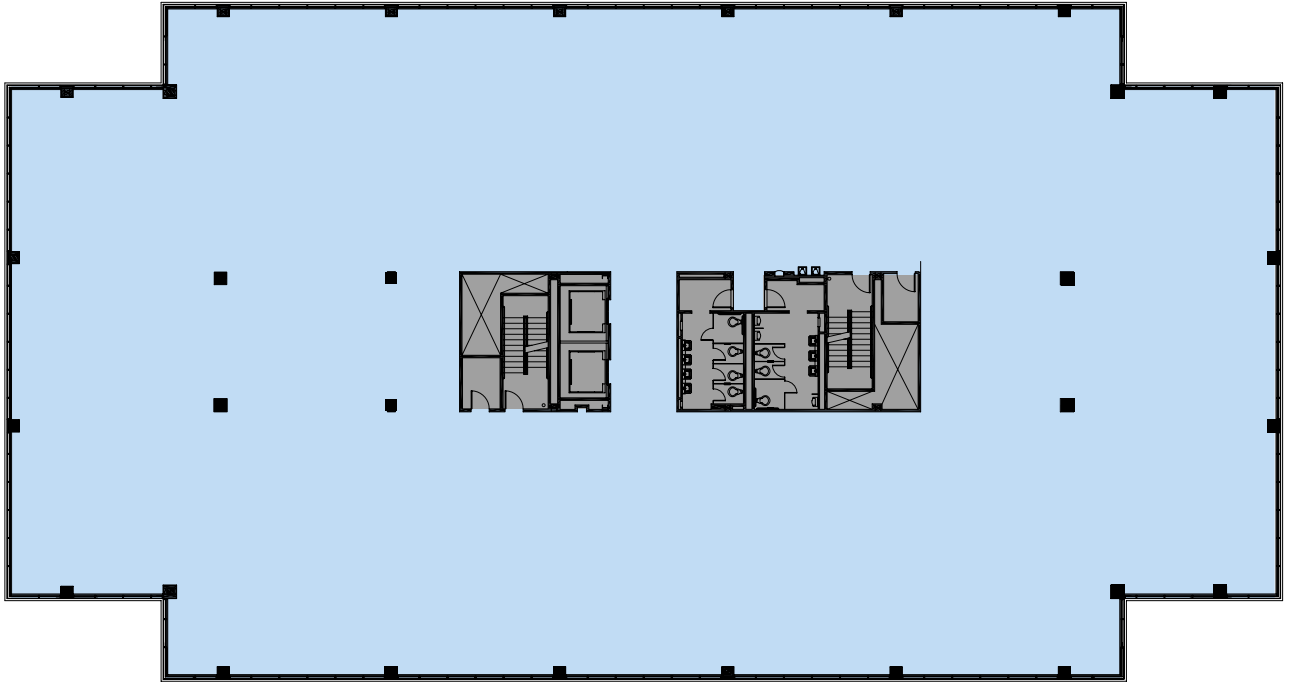
**116,174 SF**

for more information:

**KEITH OLDT**  
484.645.6675

[keith.oldt@bdnreit.com](mailto:keith.oldt@bdnreit.com)

## TYPICAL FLOOR PLAN



## BUILDING HIGHLIGHTS

- River views in the heart of Conshohocken
- Electricity separately metered for each tenant
- On-site day porter services
- First-class property management services provided by the dedicated team at Brandywine Realty Trust
- Building access controlled by a monitored proximity card reader 24/7
- Online tenant resource system
- Energy Star qualified building: uses on average 35% less energy than typical buildings and releases 35% less carbon dioxide into the atmosphere
- Dedicated to sustainability through Brandywine's company-wide program, Brandywine Environments

Brandywine Realty Trust is one of the largest, publicly-traded, full-service, integrated real estate companies in the United States with a core focus in the Philadelphia, PA, Washington, D.C., and Austin, TX markets. Organized as a real estate investment trust (REIT), we own, develop, lease and manage an urban, town center and transit-oriented portfolio.



555 East Lancaster Avenue  
Suite 110, Radnor, PA 19087

[www.brandywinerealty.com](http://www.brandywinerealty.com)



for more information:

**KEITH OLDT**  
**484.645.6675**  
[keith.oldt@bdnreit.com](mailto:keith.oldt@bdnreit.com)

