

590 FIFTH AVENUE | NEW YORK, NY
BETWEEN WEST 47TH STREET AND WEST 48TH STREET



SEPHORA

590

590 FIFTH AVENUE | NEW YORK, NY BETWEEN WEST 47TH STREET AND WEST 48TH STREET

Contiguous full-floor opportunities available immediately. Secure one or multiple floors on a prime Fifth Avenue corridor.

Floor 3 – 6,350 RSF – Available Immediately

~~Floor 4 – 6,350 RSF – LEASED~~

Floor 5 – 6,350 RSF – Available Immediately

Floor 6 – 6,350 RSF – Available Immediately

Floor 7 – 6,350 RSF – Available Immediately

Property Highlights

- **Column-free floor plates** creating an open, flexible layout
- **Bay windows** provide excellent natural light penetration throughout the space due to the absence of columns, enhancing the open feel
- **12.5' slab-to-slab ceiling heights**
- Landlord will deliver a **brand-new NBI / turnkey installation** on a **10-year lease**
- **Brand-new lobby** underway with **new elevator cabins** already completed
- **Stable ownership** with premium, contemporary building finishes

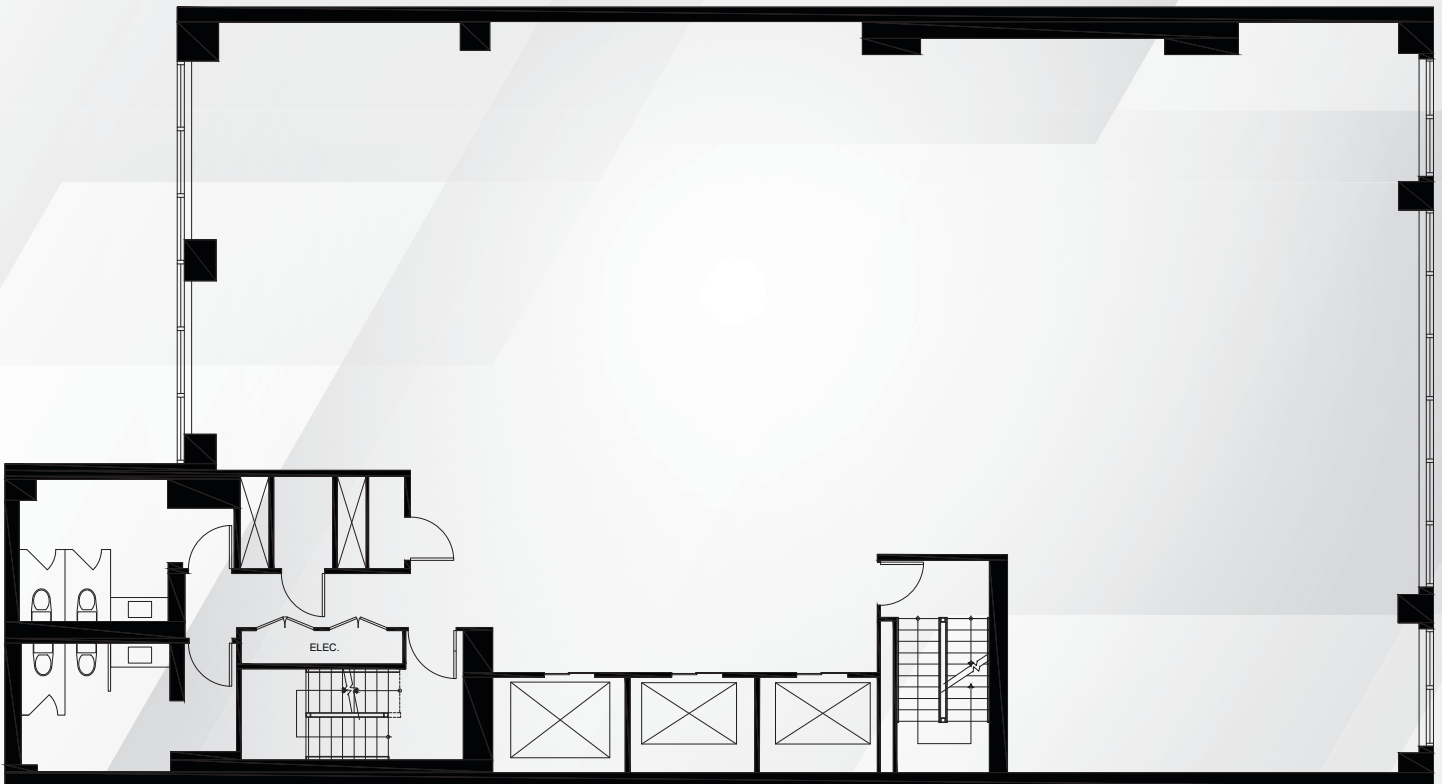


AVI BEN-ISHAY
Managing Director
abenishay@ewcpre.com
212-391-2080 office
646-242-3183 mobile

EASTWOOD CAPITAL PROPERTIES
579 Fifth Avenue, Second Floor
New York, NY 10036
www.ewcpre.com

590 FIFTH AVENUE | NEW YORK, NY

FLOORS 3 - 7: EXISTING CONDITIONS



590 5TH AVENUE, NEW YORK, NY 10036 | BROKER: EASTWOOD CAPITAL PROPERTIES
FLOORS 3-9 - EXISTING CONDITIONS

1/8" = 1'-0"
**NOT FOR CONSTRUCTION



 **EASTWOOD
CAPITAL**
Properties

AVI BEN-ISHAY
Managing Director
abenishay@ewcpre.com
212-391-2080 office
646-242-3183 mobile

EASTWOOD CAPITAL PROPERTIES
579 Fifth Avenue, Second Floor
New York, NY 10036
www.ewcpre.com

590 FIFTH AVENUE | NEW YORK, NY

FLOORS 3 - 7: TEST FIT OPTION 1



TEST FIT - OPTION 1

- 6,350 RSF
- 7 PRIVATE OFFICES
- 14 WORKSTATIONS
- 1 CONFERENCE ROOM

590 5TH AVENUE, NEW YORK, NY 10036 | BROKER: EASTWOOD CAPITAL PROPERTIES
FLOORS 3-9 - TEST FIT - OPTION 1

1/8" = 1'-0"
**NOT FOR CONSTRUCTION

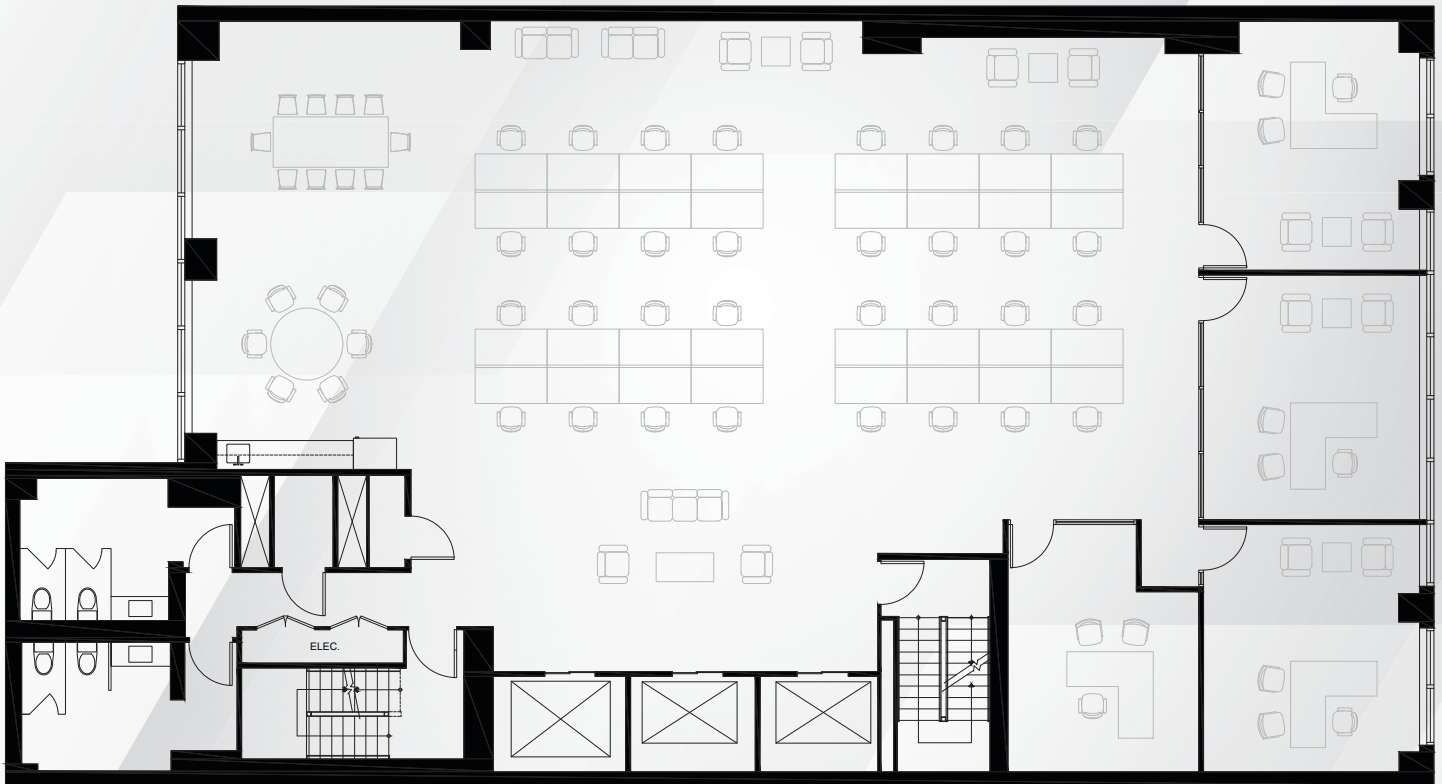


AVI BEN-ISHAY
Managing Director
abenishay@ewcpre.com
212-391-2080 office
646-242-3183 mobile

EASTWOOD CAPITAL PROPERTIES
579 Fifth Avenue, Second Floor
New York, NY 10036
www.ewcpre.com

590 FIFTH AVENUE | NEW YORK, NY

FLOORS 3 - 7: TEST FIT OPTION 2



TEST FIT - OPTION 2

- 6,350 RSF
- 4 PRIVATE OFFICES
- 32 WORKSTATIONS
- MEETING AREA

590 5TH AVENUE, NEW YORK, NY 10036
FLOORS 3-9 - TEST FIT - OPTION 2

BROKER: EASTWOOD CAPITAL PROPERTIES

1/8" = 1'-0"
**NOT FOR CONSTRUCTION



AVI BEN-ISHAY
Managing Director
abenishay@ewcpre.com
212-391-2080 office
646-242-3183 mobile

EASTWOOD CAPITAL PROPERTIES
579 Fifth Avenue, Second Floor
New York, NY 10036
www.ewcpre.com

590 FIFTH AVENUE | NEW YORK, NY
BETWEEN WEST 47TH STREET AND WEST 48TH STREET

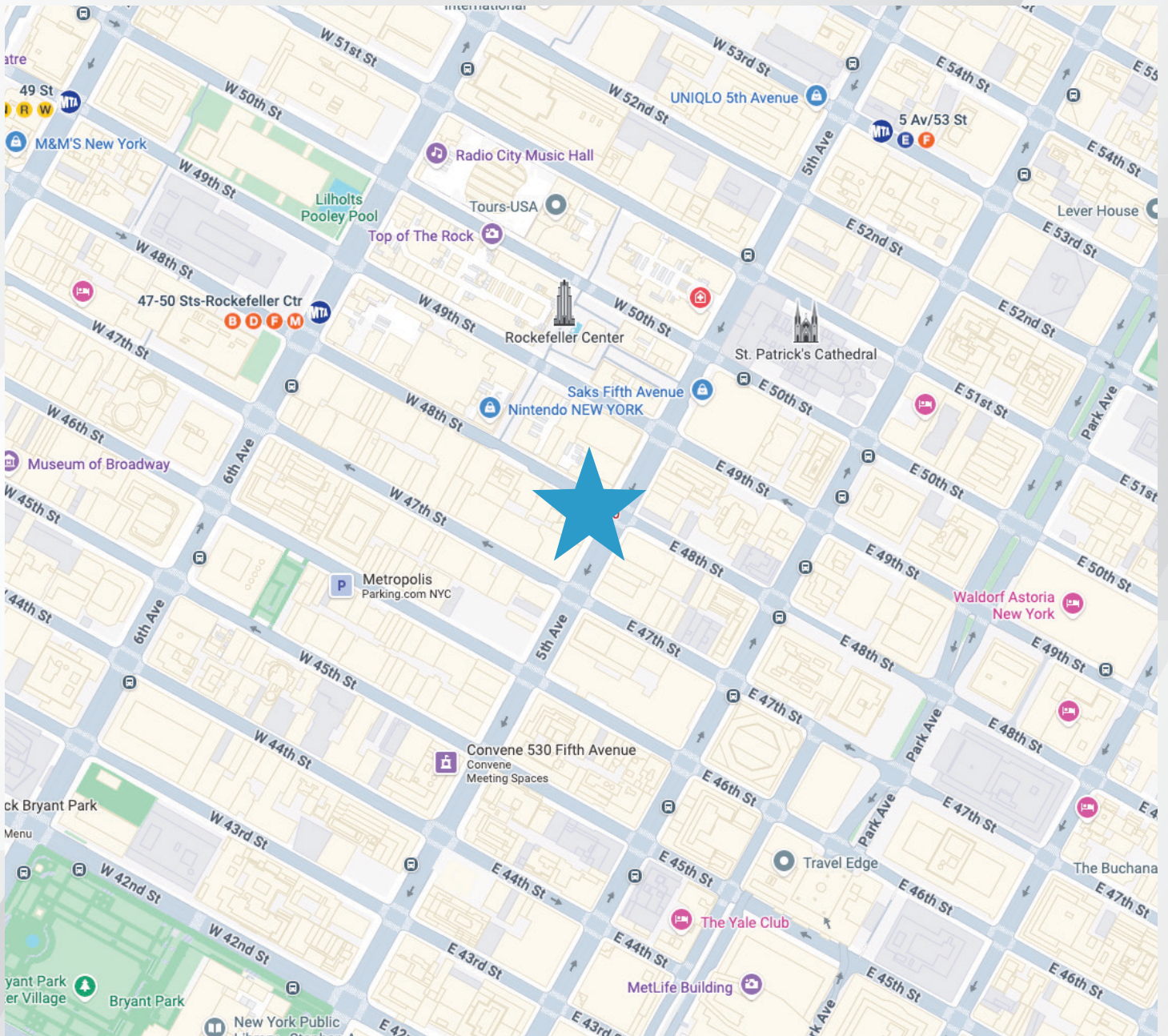


AVI BEN-ISHAY
Managing Director
abenishay@ewcpre.com
212-391-2080 office
646-242-3183 mobile

EASTWOOD CAPITAL PROPERTIES
579 Fifth Avenue, Second Floor
New York, NY 10036
www.ewcpre.com

590 FIFTH AVENUE | NEW YORK, NY

BETWEEN WEST 47TH STREET AND WEST 48TH STREET



AVI BEN-ISHAY
Managing Director
abenishay@ewcpre.com
212-391-2080 office
646-242-3183 mobile

EASTWOOD CAPITAL PROPERTIES
579 Fifth Avenue, Second Floor
New York, NY 10036
www.ewcpre.com