

# For Lease

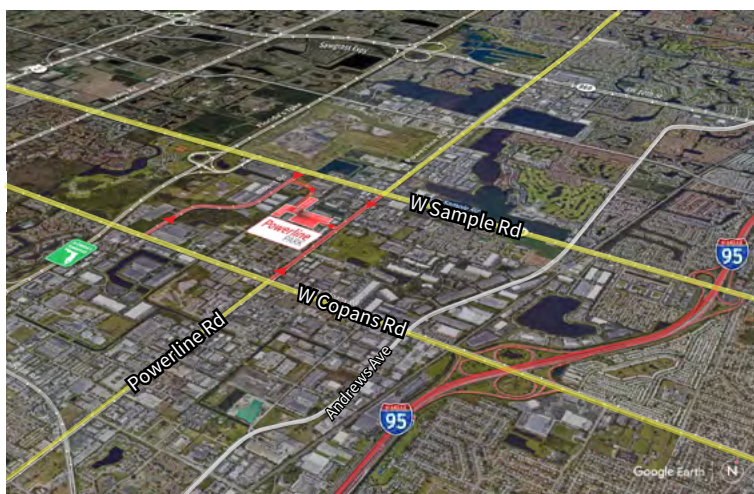
**Powerline Park**  
3016 NW 25th Avenue  
Pompano Beach, FL 33069



**Industrial Space For Lease**  
**2,988 SF**

## Powerline Park

3016 NW 25th Avenue, Pompano Beach, FL 33069



### Location

- Easy access off Sample Road and Powerline Road
- Excellent access to I-95 and the Florida Turnpike
- Equidistant to Fort Lauderdale/Hollywood International Airport and Palm Beach International Airport

### Space Features

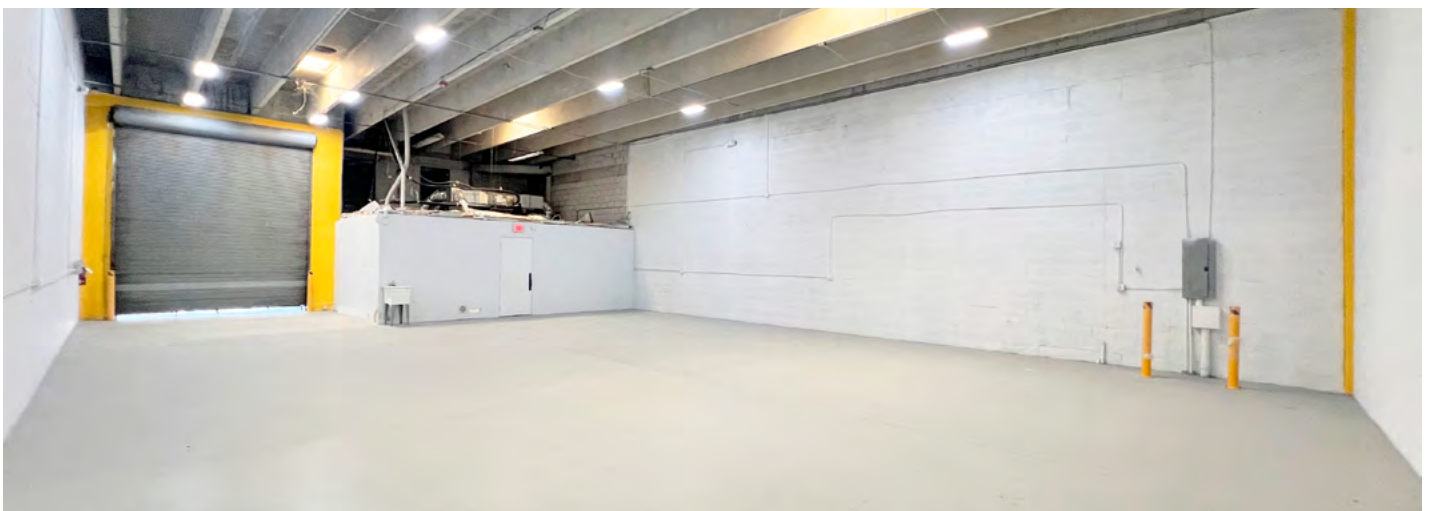
- 2,988 SF total
- 543 SF of office
- 2,445 SF of warehouse
- 16' clear height
- One (1) grade level door
- Parking ratio: 2.0/1,000 sf
- Recently Renovated
- Available Now

# For Lease

## Powerline Park

3016 NW 25<sup>th</sup> Avenue, Pompano Beach, FL 33069

### Powerline Park Recently Renovated Office & Warehouse



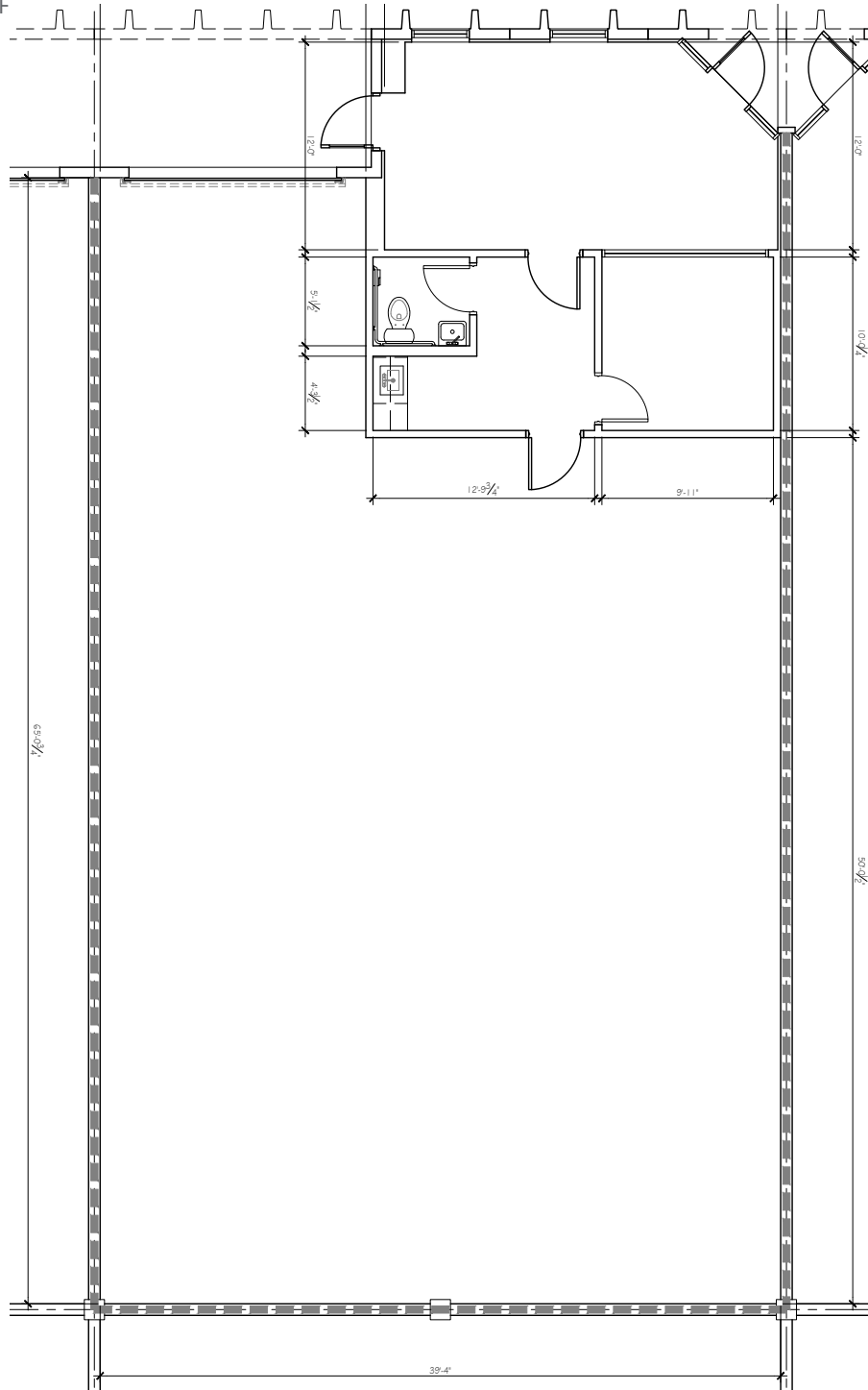
# For Lease

# Powerline Park

3016 NW 25<sup>th</sup> Avenue, Pompano Beach, FL 33069

## Powerline Park Dimensioned Floor Plan

Total: 2,988 SF  
Office: 543 SF  
Warehouse: 2,445 SF



## Powerline Park Site Plan

■ - Available Space



| Building | Suite | Total (SF) | Office (SF) | Warehouse (SF) | Loading | Clear Height | Available Date |
|----------|-------|------------|-------------|----------------|---------|--------------|----------------|
| 7        | 16    | 2,988      | 543         | 2,445          | 1 G     | 16'          | Now            |

